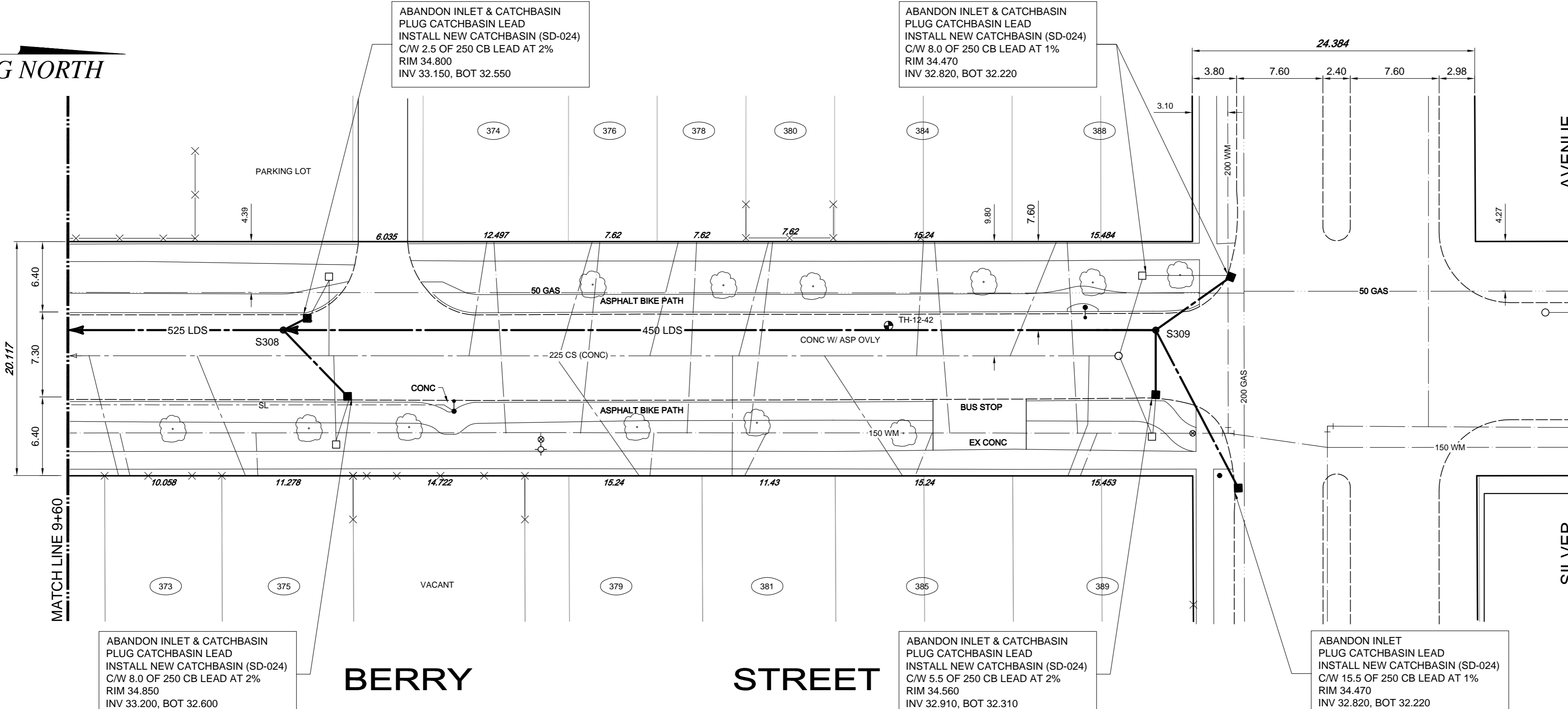


DWG NORTH

SEE DRAWING C0206



- CONSTRUCTION NOTES:**
1. LOCATION OF ALL SEWER AND WATER LINES TO BE CONFIRMED IN THE FIELD.
 2. SEWER AND WATER SERVICES SHOWN ON DRAWINGS ARE APPROXIMATE ONLY.
 3. INSTALL NEW SEWER AND CATCHBASIN LEADS BY TRENCHLESS METHODS, UNLESS NOTED OTHERWISE.
- GENERAL NOTES:**
1. CHAINAGE IS ALONG WEST LIMIT OF BERRY STREET.
 2. STATION 1+00 = NORTH LIMIT OF PORTAGE AVENUE AND WEST LIMIT OF BERRY STREET.
 3. SEE SPECIFICATIONS FOR DETAILED TEST HOLE INFORMATION.

APEGM
Certificate of Authorization
TETRA TECH WEI Inc.
No. 5313 Date: April 30, 2014

WARNING
IF POWER EQUIPMENT OR EXPLOSIVES ARE TO BE USED FOR EXCAVATION ON THIS PROJECT THE CONTRACTOR MUST:
1. NOTIFY THE GAS COMPANY OF THE PROPOSED LOCATION OF EXCAVATION.
2. TAKE PRECAUTION TO AVOID DAMAGE TO GAS COMPANY INSTALLATIONS. SEE PROVINCIAL REGULATION 140/92 FOR DETAILS.

ABANDON INLET & CATCHBASIN
PLUG CATCHBASIN LEAD
INSTALL NEW CATCHBASIN (SD-024)
C/W 8.0 OF 250 CB LEAD AT 2%
RIM 34.850
INV 33.200, BOT 32.600

ABANDON INLET & CATCHBASIN
PLUG CATCHBASIN LEAD
INSTALL NEW CATCHBASIN (SD-024)
C/W 2.5 OF 250 CB LEAD AT 2%
RIM 34.800
INV 33.150, BOT 32.550

ABANDON INLET & CATCHBASIN
PLUG CATCHBASIN LEAD
INSTALL NEW CATCHBASIN (SD-024)
C/W 8.0 OF 250 CB LEAD AT 1%
RIM 34.470
INV 32.820, BOT 32.220

ABANDON INLET & CATCHBASIN
PLUG CATCHBASIN LEAD
INSTALL NEW CATCHBASIN (SD-024)
C/W 5.5 OF 250 CB LEAD AT 2%
RIM 34.560
INV 32.910, BOT 32.310

ABANDON INLET
PLUG CATCHBASIN LEAD
INSTALL NEW CATCHBASIN (SD-024)
C/W 15.5 OF 250 CB LEAD AT 1%
RIM 34.470
INV 32.820, BOT 32.220



EXISTING	LEGEND-PLAN	PROPOSED	EXISTING	LEGEND-PLAN	PROPOSED	EXISTING	LEGEND-PLAN	PROPOSED
150 WM	WATERMAIN	150 WM	ANCHOR	ANCHOR	ANCHOR	15.240	LEGAL DIMENSION	LEGAL DIMENSION
400 FM	FEEDERMAIN	400 FM	TREE	TREE	TREE		SURVEY BAR	SURVEY BAR
300 LDS	LAND DRAINAGE SEWER	300 LDS	CURB STOP	CURB STOP	CURB STOP		TRAFFIC SIGNAL	TRAFFIC SIGNAL
250 WWS	WASTEWATER SEWER	250 WWS	PLUG	PLUG	PLUG		GAS	GAS
300 CS	COMBINED SEWER	300 CS	MANHOLE	MANHOLE	MANHOLE		HYDRO	HYDRO
200 FCM	FORCEMAIN	200 FCM	CATCHBASIN	CATCHBASIN	CATCHBASIN		MTS	MTS
	JUNCTIONS		CURB INLET	CURB INLET	CURB INLET		SIDEWALK	SIDEWALK
	HYDRANT		ADDRESS	ADDRESS	ADDRESS		CURB	CURB
	VALVE		HYDRO POLE	HYDRO POLE	HYDRO POLE			
	REDUCER		LIGHT STANDARD	LIGHT STANDARD	LIGHT STANDARD			

LOCATION APPROVED UNDERGROUND STRUCTURES

SUPV. U/G STRUCTURES COMMITTEE	DATE

NOTE:
LOCATION OF UNDERGROUND STRUCTURES AS SHOWN ARE BASED ON THE BEST INFORMATION AVAILABLE. BUT NO GUARANTEE IS GIVEN THAT ALL EXISTING UTILITIES ARE SHOWN OR THAT THE GIVEN LOCATIONS ARE EXACT. CONFIRMATION OF EXISTENCE AND EXACT LOCATION OF ALL SERVICES MUST BE OBTAINED FROM THE INDIVIDUAL UTILITIES BEFORE PROCEEDING WITH CONSTRUCTION.

B.M. THE CITY OF WINNIPEG 38-029
ELEV. 235.694m

NO.	REVISIONS	DATE	BY
01	ISSUED FOR TENDER	14.01.28	KJM
00	ISSUED FOR APPROVAL	14.01.27	KJM

TETRA TECH

DESIGNED BY	CHECKED BY
KJM, GWC	BLM
DRAWN BY	APPROVED BY
GMD	GS

HOR. SCALE: 1 : 250
VERTICAL: 1 : 50

RELEASED FOR CONSTRUCTION

ORIGINAL DRAWING REVISION "00" SEALED BY
K.J. McRAE
14.01.27

CONSULTANT DRAWING NO.
1000120300-DWG-C0134

THE CITY OF WINNIPEG
WATER AND WASTE DEPARTMENT

FERRY ROAD AND RIVERBEND
COMBINED SEWER RELIEF WORKS
CONTRACT 3

BERRY STREET
96m SOUTH OF SILVER AVENUE TO
SILVER AVENUE

CITY DRAWING NUMBER
10670

SHEET 7 OF 14

C0307

BID OPPORTUNITY No. 36-2014