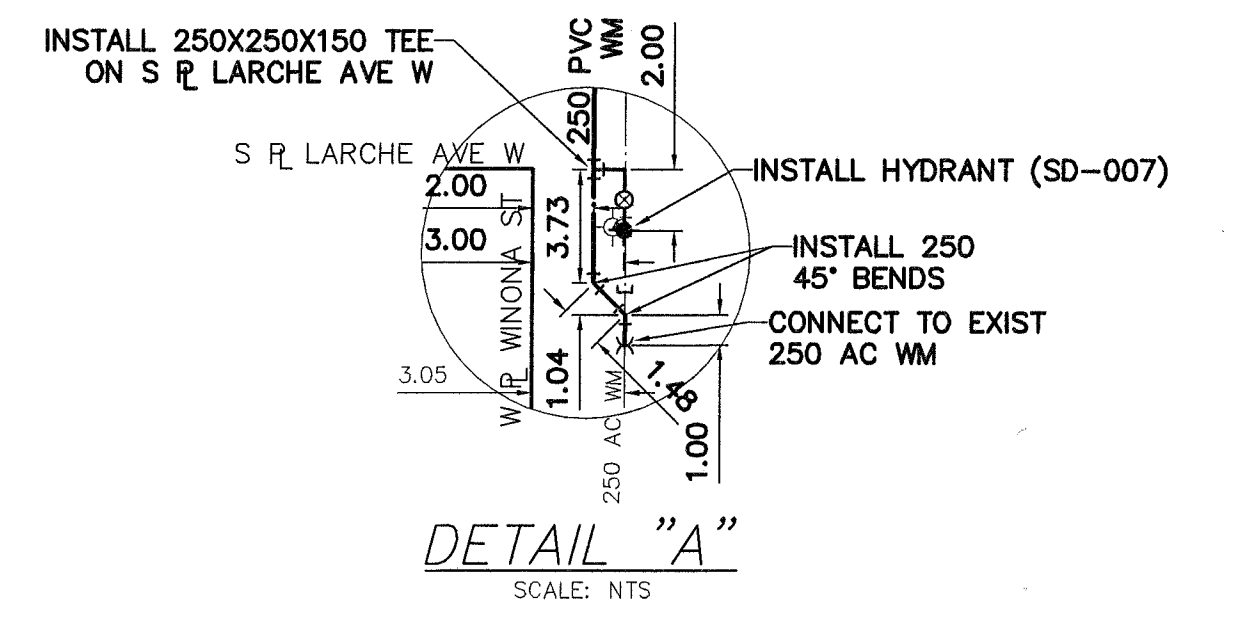


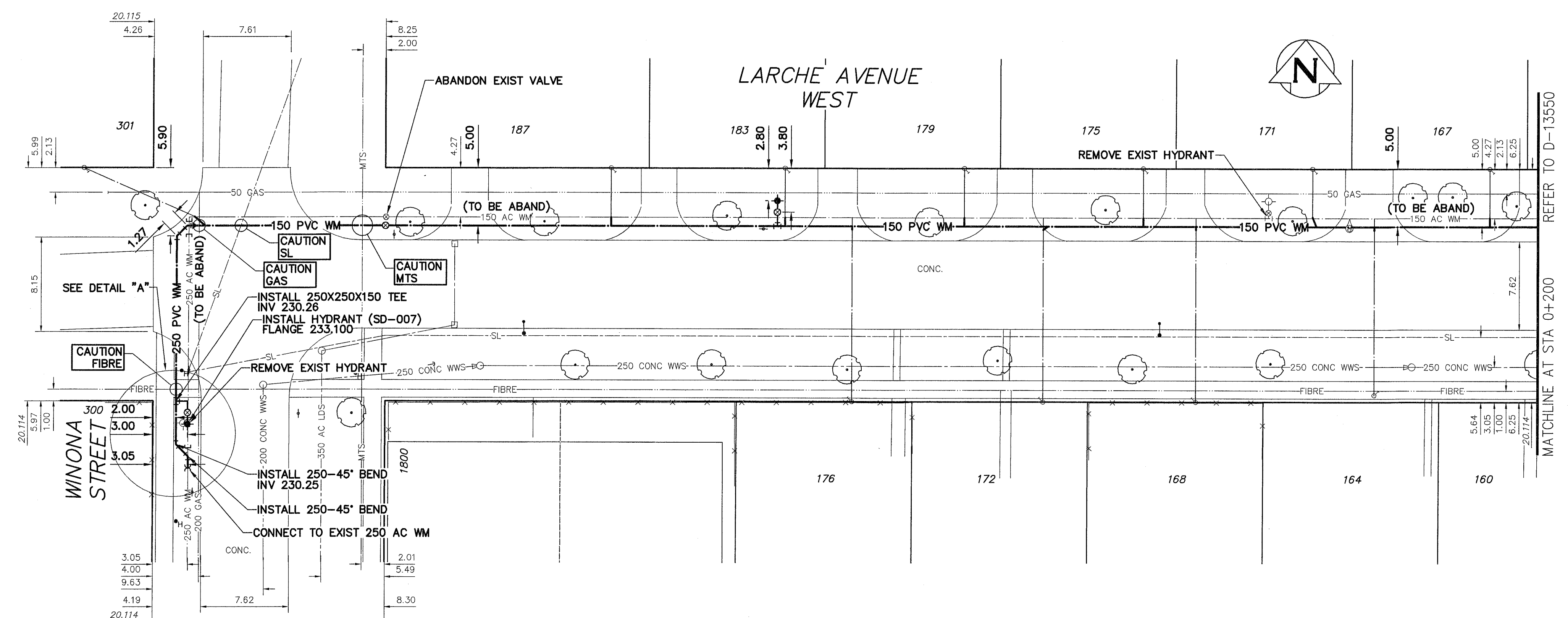
NOTE: CHAINAGES SHOWN ARE ALONG N. R. OF LARCHE AVE WEST



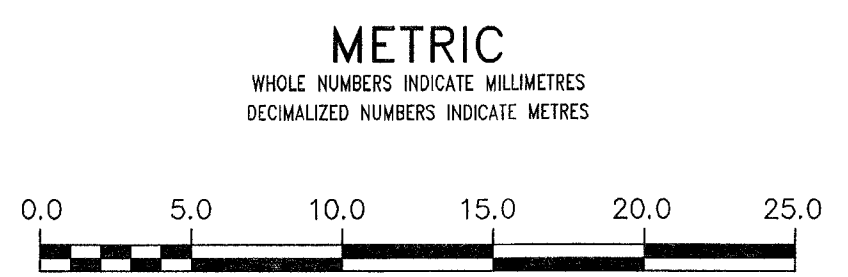
WATER SERVICE INFORMATION

ADDRESS	SIZE (mm)	SIZE (mm)	SHORT & LONG MEASUREMENT	CORPORATION LOCATION	REMARKS
	MATERIAL	MATERIAL	(STREET) (PROP.)		
164 LARCHE AV W	20	20	5.6 W E LOTLINE		
RESIDENTIAL	CU	CU	9.1 FROM HOUSE FRONT		
167 LARCHE AV W	20	20	2.9 W E HSE LINE		
RESIDENTIAL	CU	CU	8.4 FROM HOUSE FRONT		
168 LARCHE AV W	20	20	5.3 W E HSE LINE		
RESIDENTIAL	CU	CU	9.6 FROM HOUSE FRONT		
171 LARCHE AV W	20	20	3.1 W E HSE LINE		
RESIDENTIAL	CU	CU	9.0 FROM HOUSE FRONT		
172 LARCHE AV W	20	20	3.4 W E HSE LINE		
RESIDENTIAL	CU	CU	9.6 FROM HOUSE FRONT		
175 LARCHE AV W	20	20	2.4 W E HSE LINE		
RESIDENTIAL	CU	CU	8.5 FROM HOUSE FRONT		
176 LARCHE AV W	20	20	4.6 W E HSE LINE		
RESIDENTIAL	CU	CU	9.3 FROM HOUSE FRONT		
179 LARCHE AV W	20	20	2.7 W E HSE LINE		
RESIDENTIAL	CU	CU	8.7 FROM HOUSE FRONT		
183 LARCHE AV W	20	20	3.1 W E HSE LINE		
RESIDENTIAL	CU	CU	7.8 FROM HOUSE FRONT		
187 LARCHE AV W	20	20	2.9 W E HSE LINE		
RESIDENTIAL	CU	CU	7.0 FROM HOUSE FRONT		
301 LARCHE AV W	20	20	2.6 E E HSE LINE		SERVICE BOX PREVIOUSLY RENEWED
1800 WINONA ST	38	38	2.1 W EL WINONA @ NL THOM	1.52 E EDGE BLDG	SERVICED OFF THOM

NOTE: REPLACE ALL EXISTING LEAD SERVICES FROM THE PROPOSED WATERMAIN TO PROPERTY LINE. RECONNECT ALL OTHER SERVICES UNLESS NOTED. LOCATION OF WATER SERVICES SHOWN ON DRAWINGS ARE APPROXIMATE. THE CONTRACTOR SHALL FIELD LOCATE ALL WATER SERVICES PRIOR TO CONSTRUCTION. RENEW SERVICES UNDER ROADWAY WITH LESS THAN 2.5 COVER.



ALL VALVES TO BE CLOCKWISE TO CLOSE (BLACK OPERATING NUT)



WARNING
IF POWER EQUIPMENT OR EXPLOSIVES ARE TO BE USED FOR EXCAVATION ON THIS PROJECT THE CONTRACTOR MUST:
1) NOTIFY THE GAS COMPANY OF THE PROPOSED LOCATION OF EXCAVATION.
2) TAKE PRECAUTION TO AVOID DAMAGE TO GAS COMPANY INSTALLATIONS.
SEE PROVINCIAL REGULATION 210/72 FOR DETAILS

LOCATION APPROVED UNDERGROUND STRUCTURES
SUPV. U/G STRUCTURES COMMITTEE DATE
NOTE:
LOCATION OF UNDERGROUND STRUCTURES AS SHOWN ARE BASED ON THE BEST INFORMATION AVAILABLE BUT NO GUARANTEE IS GIVEN THAT ALL EXISTING UTILITIES ARE SHOWN OR THAT THE GIVEN LOCATIONS ARE EXACT. CONFIRMATION OF EXISTENCE AND EXACT LOCATION OF ALL SERVICES MUST BE OBTAINED FROM THE INDIVIDUAL UTILITIES BEFORE PROCEEDING WITH CONSTRUCTION.

S.M. 10-007
ELEV. 232.762m
CONSTRUCTION COMPLETION DATE:

NO.	ISSUED FOR TENDER	DATE	BY
A	PRELIMINARY	14/03/28	GSK
	REVISIONS		

AECOM

DESIGNED BY: GK
DRAWN BY: JP
SCALE: HORIZONTAL 1:250, VERTICAL 1:50

CHECKED BY: [Signature]
APPROVED BY: [Signature]
RELEASED FOR CONSTRUCTION: [Signature]

DATE: 2014 04 07

ENGINEER'S SEAL
PROVINCE OF MANITOBA
11/04/08
B. T. WEBER
REGISTERED ENGINEER
CONSULTANT DRAWING NUMBER: C-1007

THE CITY OF WINNIPEG
WATER AND WASTE DEPARTMENT
ENGINEERING DIVISION

2014 WATER RENEWALS
CONTRACT 1
LARCHE AVENUE WEST
WINONA STREET TO
52m WEST OF BOND STREET

SHEET 8 OF 13
CITY DRAWING NUMBER: D-13549