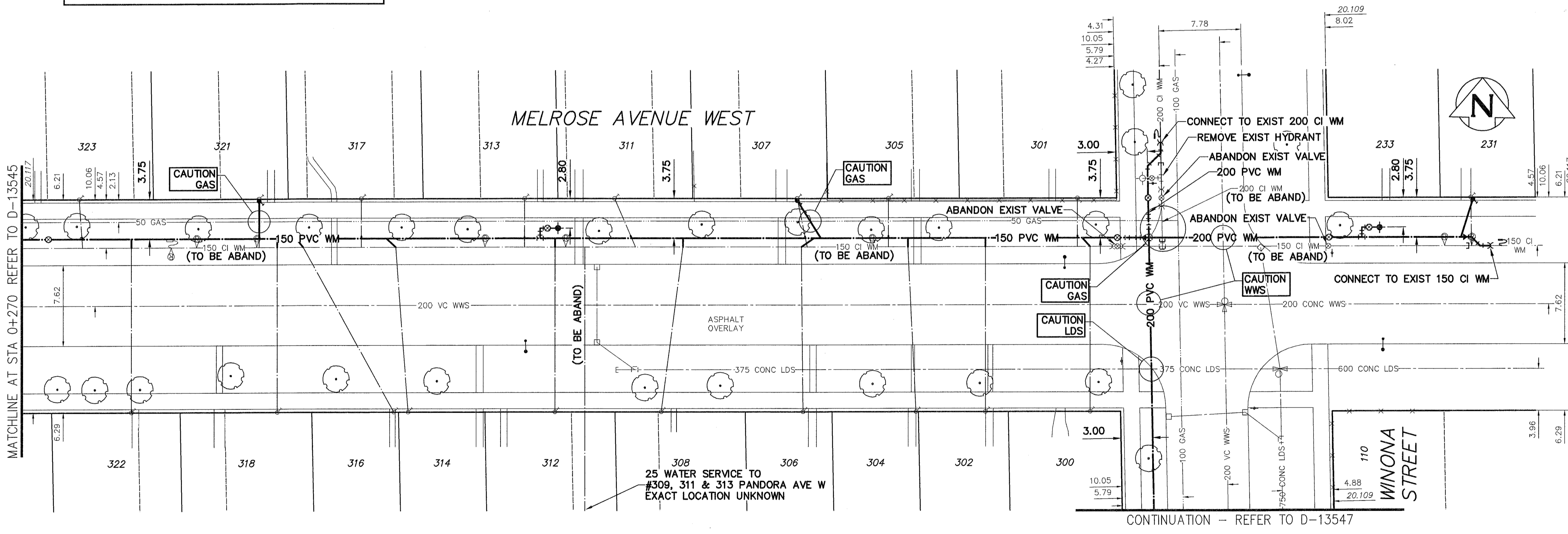


NOTE: CHAINAGES SHOWN ARE ALONG N. R. OF MELROSE AVE WEST

**WATER SERVICE INFORMATION**

ADDRESS	SIZE (mm) MATERIAL (STREET)	SIZE (mm) MATERIAL (PROP.)	SHORT & LONG MEASUREMENT	CORPORATION LOCATION	REMARKS
231 MELROSE AV W	16	20	1.7 E W BLDG LINE #231	OPP S/C	RENEW TO PROPERTY
233 MELROSE AV W	-	20	1.4 S W HSE LINE	-	SERVICED OFF WINONA
300 MELROSE AV W	-	20	0.9 W E HSE LINE	-	-
301 MELROSE AV W	-	12	4.7 FROM HSE FRONT	-	-
302 MELROSE AV W	-	12	2.2 W E HSE LINE	-	-
304 MELROSE AV W	20	16	1.8 E E HSE LINE	0.91 W S/C	-
305 MELROSE AV W	-	12	2.4 W E HSE LINE	-	-
306 MELROSE AV W	-	20	5.2 FROM HSE FRONT	-	-
307 MELROSE AV W	16	12	1.0 W E HSE LINE	1.22 E S/C	RENEW TO PROPERTY
308 MELROSE AV W	20	12	1.2 E W HSE LINE	2.13 E S/C	-
311 MELROSE AV W	20	16	1.0 E W HSE LINE	1.83 E S/C	-
312 MELROSE AV W	-	16	1.4 W E HSE LINE	-	-
313 MELROSE AV W	-	16	3.7 FROM HSE FRONT	-	-
314 MELROSE AV W	20	16	1.4 W E HSE LINE	1.52 W S/C	DBL SER 316
316 MELROSE AV W	20	20	0.8 E E BLDG LINE	8.60 W S/C	DBL SER 314 TEE 0.6 N OF S/C
317 MELROSE AV W	-	12	3.1 E W HSE LINE	1.37 E S/C	-
318 MELROSE AV W	-	16	6.1 FROM HSE FRONT	-	-
321 MELROSE AV W	-	16	1.4 W E HSE LINE	-	PREVIOUSLY FROZEN RENEW TO PROPERTY
322 MELROSE AV W	-	16	0.5 E E LOTLINE	-	-
323 MELROSE AV W	20	12	4.9 OUT	-	-
323 MELROSE AV W	20	12	1.8 E W HSE LINE	2.13 E W LOTLINE #323	-

NOTE: REPLACE ALL EXISTING LEAD SERVICES FROM THE PROPOSED WATERMAIN TO PROPERTY LINE. RECONNECT ALL OTHER SERVICES UNLESS NOTED. LOCATION OF WATER SERVICES SHOWN ON DRAWINGS ARE APPROXIMATE. THE CONTRACTOR SHALL FIELD LOCATE ALL WATER SERVICES PRIOR TO CONSTRUCTION.



**APECM**  
 Certificate of Authorization  
 AECOM Canada Ltd.  
 No. 4671 Date: 2014/04/07

ALL VALVES TO BE CLOCKWISE TO CLOSE (BLACK OPERATING NUT)

**WARNING**  
 IF POWER EQUIPMENT OR EXPLOSIVES ARE TO BE USED FOR EXCAVATION ON THIS PROJECT THE CONTRACTOR MUST:  
 1) NOTIFY THE GAS COMPANY OF THE PROPOSED LOCATION OF EXCAVATION.  
 2) TAKE PRECAUTION TO AVOID DAMAGE TO GAS COMPANY INSTALLATIONS.  
 SEE PROVINCIAL REGULATION 210/72 FOR DETAILS

**LOCATION APPROVED**  
 UNDERGROUND STRUCTURES  
 SUPV. U/G STRUCTURES COMMITTEE DATE  
 NOTE:  
 LOCATION OF UNDERGROUND STRUCTURES AS SHOWN ARE BASED ON THE BEST INFORMATION AVAILABLE BUT NO GUARANTEE IS GIVEN THAT ALL EXISTING UTILITIES ARE SHOWN OR THAT THE GIVEN LOCATIONS ARE EXACT. CONFIRMATION OF EXISTENCE AND EXACT LOCATION OF ALL SERVICES MUST BE OBTAINED FROM THE INDIVIDUAL UTILITIES BEFORE PROCEEDING WITH CONSTRUCTION.

B.M. 30-034 878462 - S. side Pandora Ave. W. & Winona St., 10ft. on top of 0.05 m dia. x 2.4 m Iron tube, 6.1 m E. of E. wall No. 301 Pandora Ave. W. & 5.7 m S. of C.L. Conc. Pavt. on Pandora Ave. W. or 4 m E. of W.L. Winona St. & 20.9 m S. of N.L. Pandora Ave. W.

NO.	REVISIONS	DATE	BY
0	ISSUED FOR TENDER	14/04/07	GSK
A	PRELIMINARY	14/03/28	GSK

**AECOM**

DESIGNED BY: GK  
 CHECKED BY: [Signature]  
 DRAWN BY: JP  
 APPROVED BY: [Signature]  
 SCALE: HORIZONTAL 1:250  
 VERTICAL 1:50  
 RELEASED FOR CONSTRUCTION: [Signature]  
 DATE: 04/18/14

ENGINEER'S SEAL  
 PROVINCE OF MANITOBA  
 14/04/08  
 B. T. WEBER  
 REGISTERED ENGINEER  
 CONSULTANT DRAWING NUMBER: C-1004

**THE CITY OF WINNIPEG**  
 WATER AND WASTE DEPARTMENT  
 ENGINEERING DIVISION

2014 WATER RENEWALS  
 CONTRACT 1  
**MELROSE AVENUE WEST**  
 173m EAST OF MADLINE STREET TO WINONA STREET

SHEET 5 OF 13  
 CITY DRAWING NUMBER: D-13546

