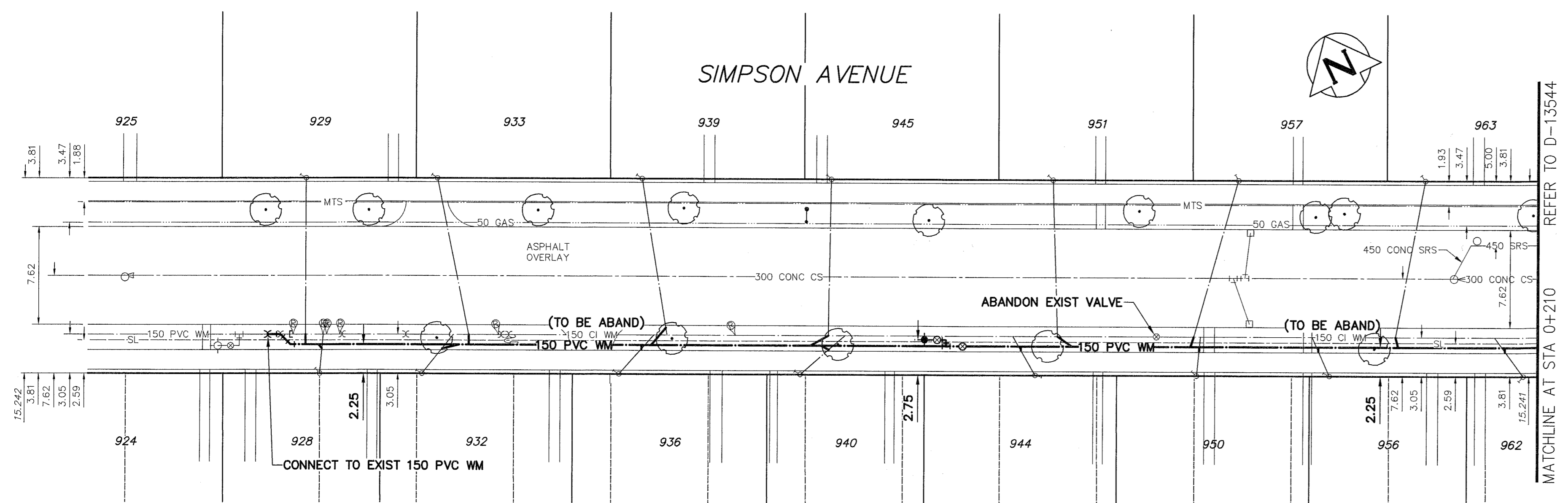


NOTE: CHAINAGES SHOWN ARE ALONG S. R. OF SIMPSON AVE

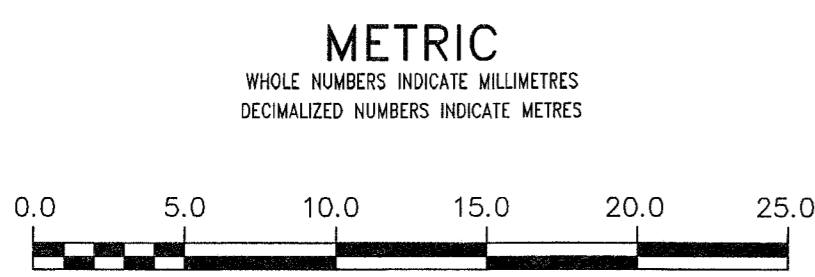
**WATER SERVICE INFORMATION**

ADDRESS	SIZE (mm) MATERIAL (STREET)	SIZE (mm) MATERIAL (PROP.)	SHORT & LONG MEASUREMENT	CORPORATION LOCATION	REMARKS
928 SIMPSON AV	20	20	2.7 W E HSE LINE	8.08 E HYD	
RESIDENTIAL	CU	CU			
929 SIMPSON AV	20	20	6.9 E W LOTLINE	OPP S/C	REVERSE TAP
RESIDENTIAL	CU	CU			
932 SIMPSON AV	20	20	3.1 E W HSE LINE	18.29 E HYD	
RESIDENTIAL	CU	CU			
933 SIMPSON AV	20	20	0.6 W W HSE LINE	19.51 E HYD	
RESIDENTIAL	CU	CU			
936 SIMPSON AV	20	20	0.6 W W HSE LINE	34.02 E HYD	
RESIDENTIAL	CU	CU			
939 SIMPSON AV	20	20	1.9 E W HSE LINE	35.05 E W HYD	
RESIDENTIAL	CU	CU			
940 SIMPSON AV	20	20	1.8 E W HSE LINE	49.01 E HYD	
RESIDENTIAL	CU	CU			
944 SIMPSON AV	20	20	2.7 W E HSE LINE	42.67 W HYD	
RESIDENTIAL	CU	CU			
945 SIMPSON AV	20	20	0.5 E W HSE LINE	47.70 E HYD	
RESIDENTIAL	CU	CU			
950 SIMPSON AV	20	20	4.0 E W HSE LINE	0.30 E S/C	S/C LOCATED 0.9 ON PROP
RESIDENTIAL	CU	CU			
951 SIMPSON AV	20	20	2.0 E W HSE LINE	39.17 W HYD	
RESIDENTIAL	CU	CU			
956 SIMPSON AV	20	20	1.1 E W HSE LINE	19.20 W HYD	
RESIDENTIAL	CU	CU			
957 SIMPSON AV	20	20	1.9 E W HSE LINE	28.50 W HYD	
RESIDENTIAL	CU	CU			
962 SIMPSON AV	20	20	9.0 W E HSE LINE	4.88 W HYD	
RESIDENTIAL	CU	CU			
963 SIMPSON AV	20	20	1.4 E W HSE LINE	12.65 W HYD	
RESIDENTIAL	CU	CU			

NOTE: REPLACE ALL EXISTING LEAD SERVICES FROM THE PROPOSED WATERMAIN TO PROPERTY LINE. RECONNECT ALL OTHER SERVICES UNLESS NOTED. LOCATION OF WATER SERVICES SHOWN ON DRAWINGS ARE APPROXIMATE. THE CONTRACTOR SHALL FIELD LOCATE ALL WATER SERVICES PRIOR TO CONSTRUCTION.



ALL VALVES TO BE COUNTER-CLOCKWISE TO CLOSE (RED OPERATING NUT)



**WARNING**  
IF POWER EQUIPMENT OR EXPLOSIVES ARE TO BE USED FOR EXCAVATION ON THIS PROJECT THE CONTRACTOR MUST:  
1) NOTIFY THE GAS COMPANY OF THE PROPOSED LOCATION OF EXCAVATION.  
2) TAKE PRECAUTION TO AVOID DAMAGE TO GAS COMPANY INSTALLATIONS.  
SEE PROVINCIAL REGULATION 210/72 FOR DETAILS

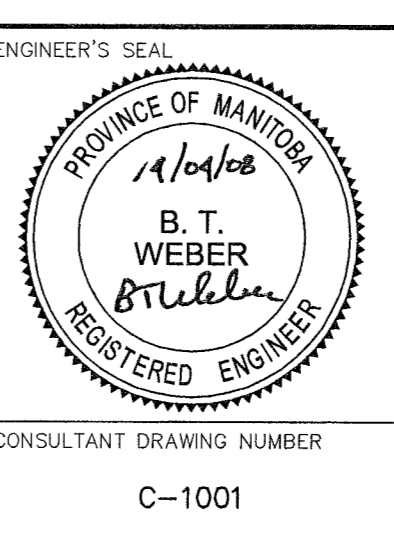
**LOCATION APPROVED UNDERGROUND STRUCTURES**  
SUPV. U/G STRUCTURES COMMITTEE DATE  
NOTE: LOCATION OF UNDERGROUND STRUCTURES AS SHOWN ARE BASED ON THE BEST INFORMATION AVAILABLE BUT NO GUARANTEE IS GIVEN THAT ALL EXISTING UTILITIES ARE SHOWN OR THAT THE GIVEN LOCATIONS ARE EXACT. CONFIRMATION OF EXISTENCE AND EXACT LOCATION OF ALL SERVICES MUST BE OBTAINED FROM THE INDIVIDUAL UTILITIES BEFORE PROCEEDING WITH CONSTRUCTION.

B.M. 28-056  
ELEV. 230.501m  
589608-S.W. Cor. Conso Ave. & Besant St., 1/4th on top of 0.05 m dia. x 2.4 m iron pipe in Valve Box, 2.7 m N. of S.L. of Conso Ave. & 1.7 m E. of W.L. of Besant St.

NO.	REVISIONS	DATE	BY
0	ISSUED FOR TENDER	14/04/07	GSK
A	PRELIMINARY	14/03/28	GSK

**AECOM**

DESIGNED BY: GK  
CHECKED BY: [Signature]  
DRAWN BY: JP  
APPROVED BY: [Signature]  
SCALE: HORIZONTAL 1:250, VERTICAL 1:50  
RELEASED FOR CONSTRUCTION: [Signature]  
DATE: 4/14/14



**THE CITY OF WINNIPEG**  
WATER AND WASTE DEPARTMENT  
ENGINEERING DIVISION

2014 WATER RENEWALS  
CONTRACT 1  
SIMPSON AVENUE  
91m EAST OF BESANT AVENUE TO  
95m WEST OF LOULDA STREET

SHEET 2 OF 13  
CITY DRAWING NUMBER  
D-13543

CONSULTANT DRAWING NUMBER  
C-1001