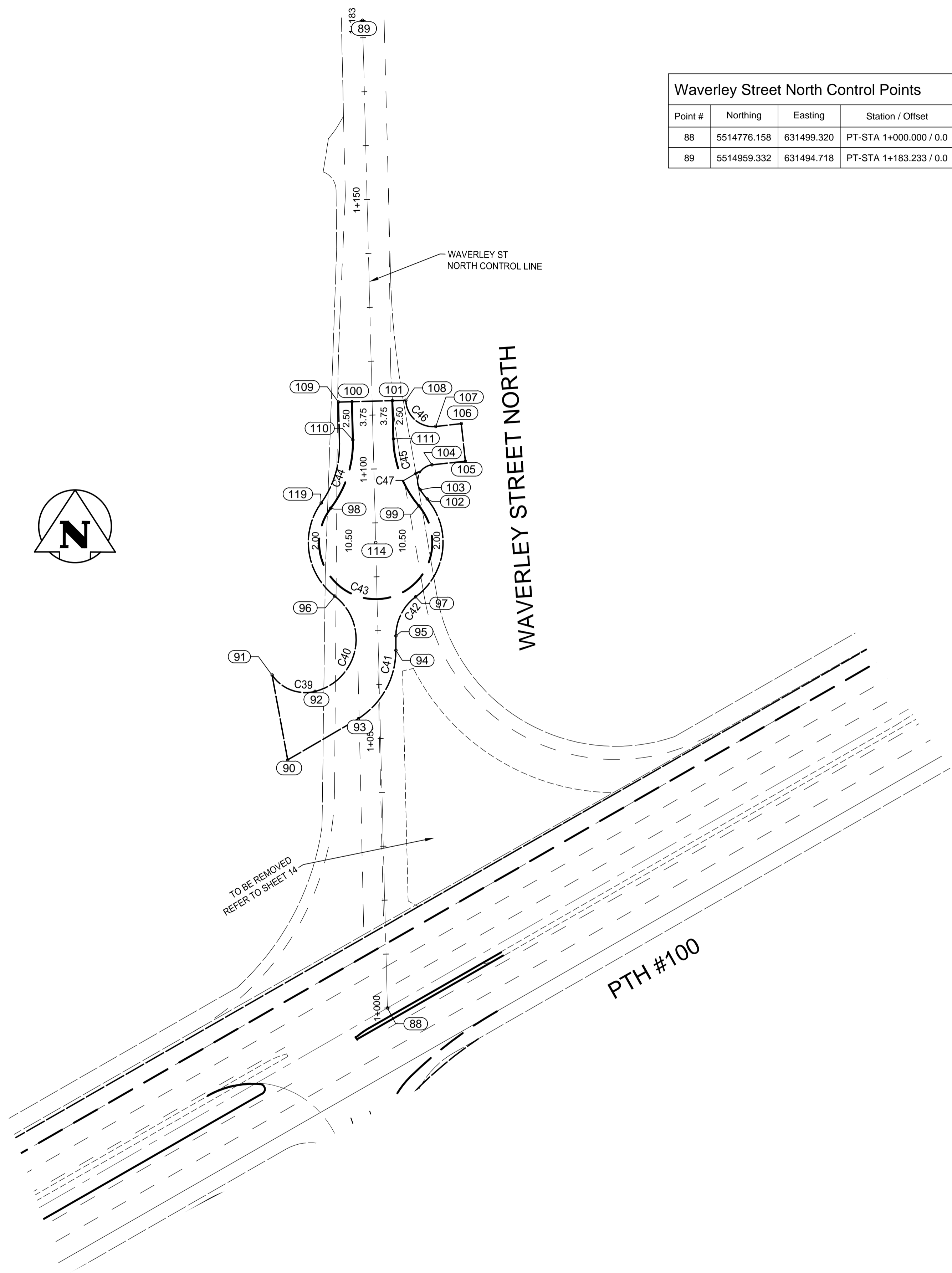


VA\1137\active\113705751\drawing\404_working\sheet_files_perimeter\05751-c-106-xxx.dwg



Point #	Northing	Easting	Station / Offset
88	5514776.158	631499.320	PT-STA 1+000.000 / 0.0
89	5514959.332	631494.718	PT-STA 1+183.233 / 0.0

Point #	Northing	Easting	Station / Offset
90	5514822.176	631480.838	PT-STA 1+046.468 / 17.320L
91	5514837.899	631477.933	PC-STA 1+062.259 / 19.829L
92	5514834.861	631485.897	PCC-STA 1+059.022 / 11.945L
93	5514829.793	631493.949	TC-STA 1+053.503 / 4.522L
94	5514842.490	631500.901	CT-STA 1+066.271 / 3.247R
95	5514845.165	631500.901	TC-STA 1+068.946 / 3.314R
96	5514852.531	631489.579	PCC-STA 10+76.594 / 7.820L
97	5514852.411	631504.564	PCC-STA 1+076.098 / 7.158R
98	5514868.858	631488.813	PCC-STA 1+092.935 / 8.175L
99	5514869.266	631505.161	PCC-STA 1+092.933 / 8.175R
100	5514888.609	631492.741	PT-STA 1+112.581 / 3.750L
101	5514888.797	631500.244	PT-STA 1+112.581 / 3.750R
102	5514870.559	631506.686	CT-STA 1+094.187 / 9.735R
103	5514872.256	631505.412	TC-STA 1+095.916 / 8.503R
104	5514876.895	631507.583	CT-STA 1+100.499 / 10.791R
105	5514877.580	631513.783	PT-STA 1+101.027 / 17.006R
106	5514884.537	631513.015	PT-STA 1+108.002 / 16.413R
107	5514884.016	631508.291	TC-STA 1+107.599 / 11.677R
108	5514888.860	631502.744	PC-STA 1+112.581 / 6.250R
109	5514888.546	631490.242	PT-STA 1+112.581 / 6.250L
110	5514881.512	631492.922	CT-STA 1+105.482 / 3.750L
111	5514881.700	631500.420	CT-STA 1+105.482 / 3.750R
114	5514862.476	631497.151	ctr-sta 1+086.345 / 0.0
119	5514869.804	631487.024	CT-STA 1+093.926 / 9.940L

Curve #	Length	Radius	Delta	Tangent	Chord Length
C39	9.065	7.500	69°15'10"	5.179	8.523
C40	22.510	10.000	128°58'20"	20.952	18.050
C41	15.646	15.000	59°45'50"	8.619	14.946
C42	8.424	9.000	53°37'40"	4.549	8.120
C43	47.229	10.500	257°43'10"	13.032	16.352
C44	13.563	20.000	38°51'20"	7.054	13.304
C45	13.566	20.000	38°51'50"	7.056	13.308
C46	8.278	5.000	94°51'30"	5.443	7.364
C47	6.138	3.000	117°13'50"	4.918	5.122

METRIC
WHOLE NUMBERS INDICATE MILLIMETRES
DECIMALIZED NUMBERS INDICATE METRES

UNDERGROUND STRUCTURES SUPV. U/G STRUCTURES COMMITTEE DATE NOTE: LOCATION OF UNDERGROUND STRUCTURES AS SHOWN ARE BASED ON THE BEST INFORMATION AVAILABLE. BUT NO GUARANTEE IS GIVEN THAT ALL EXISTING UTILITIES ARE SHOWN OR THAT THE GIVEN LOCATIONS ARE EXACT. CONFIRMATION OF EXISTENCE AND EXACT LOCATION OF ALL SERVICES MUST BE OBTAINED FROM THE INDIVIDUAL UTILITIES BEFORE PROCEEDING WITH CONSTRUCTION.	B.M. ELEV.	DESIGNED BY S.B.C.	DESIGN TEAM 	ENGINEER'S SEAL	 THE CITY OF WINNIPEG PUBLIC WORKS DEPARTMENT WWARP PART 3 - CONTRACT 4 KENASTON / WAVERLEY KENASTON BOULEVARD & WAVERLEY TO PERIMETER HORIZONTAL CONTROL GEOMETRY WAVERLEY NORTH	CITY DRAWING NUMBER P-3355-5
		DRAWN BY T.G. / P.A.		RELEASED FOR CONSTRUCTION DATE		CONSULTANT PROJECT NUMBER 113705751
		CHECKED BY S.B.C. / R.K.H.				
		APPROVED BY S.B.C.				
		HOR. SCALE 1:500				
		VERTICAL N/A				
	0 ISSUED FOR TENDER 14/04/17 S.B.C.					
	NO. REVISIONS DATE BY DATE 2014/04/17					

