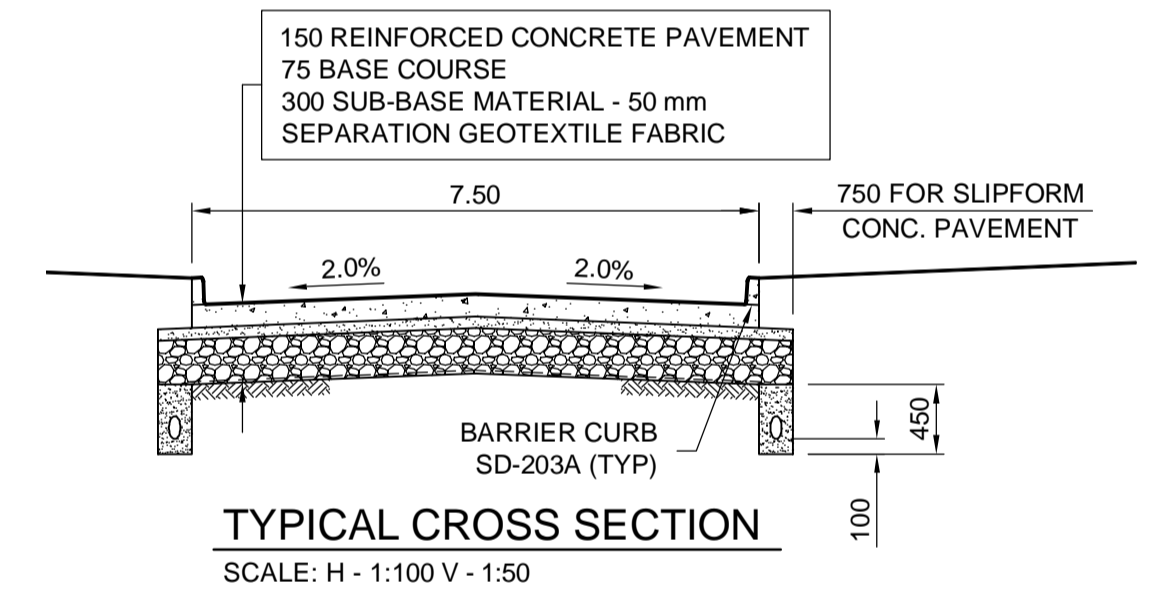
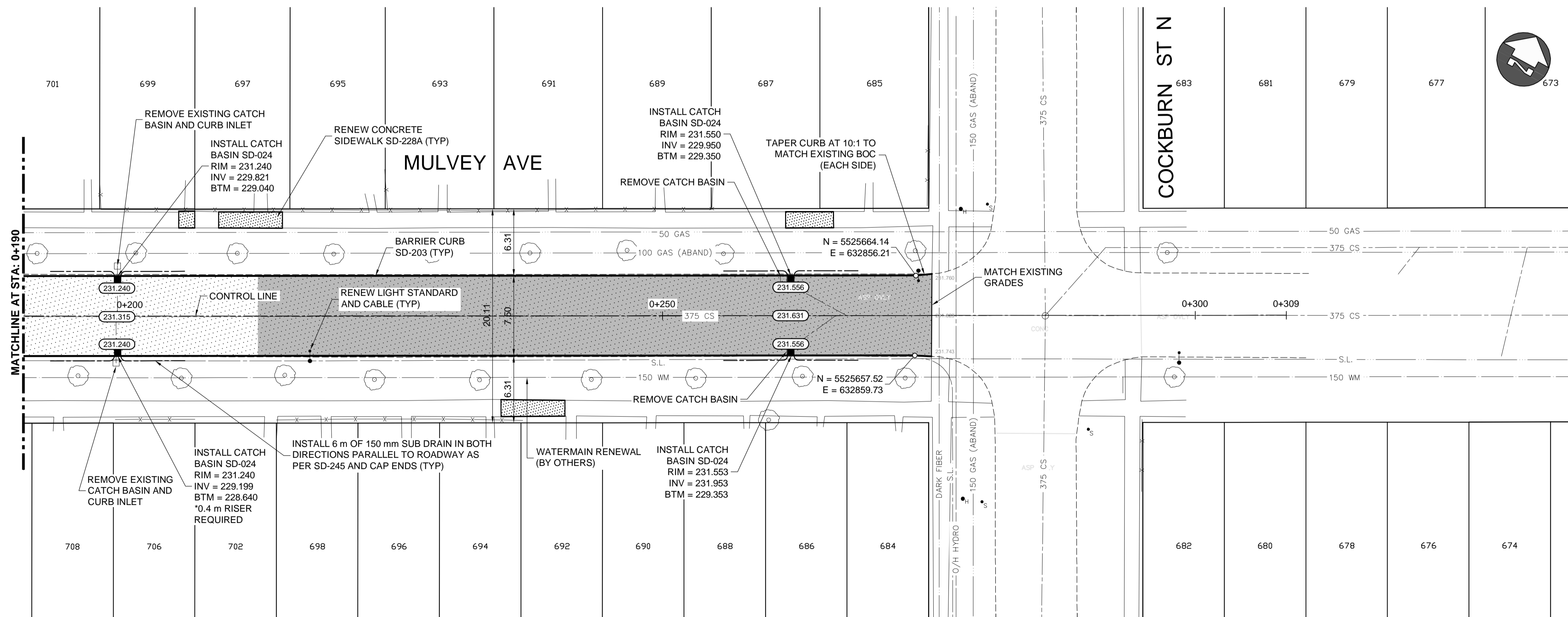
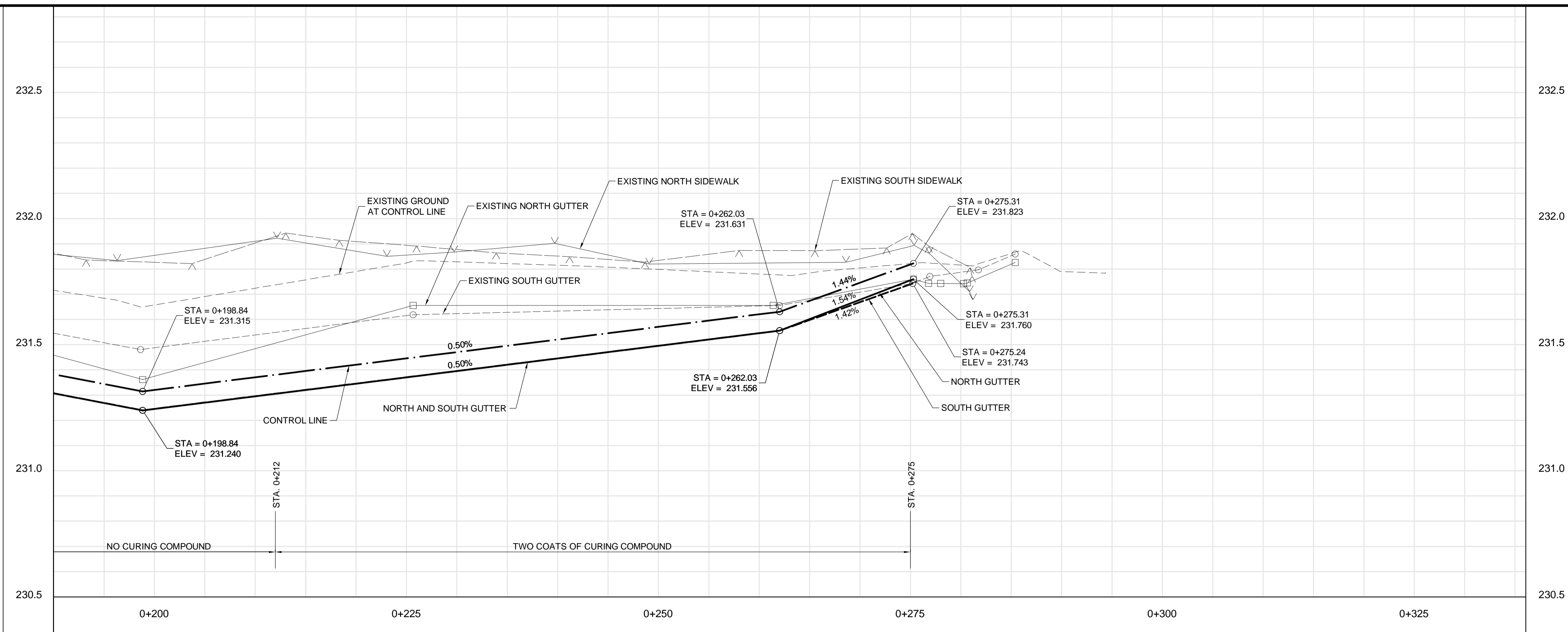


**CONSTRUCTION NOTES:**

1. ALL DIMENSIONS ARE TO BACK OF CURB.
2. ISOLATE MISCELLANEOUS ITEMS IN NEW CONCRETE WORKS AS PER SD-228C.
3. LEGAL PLAN AND UNDERGROUND INFORMATION FROM CITY OF WINNIPEG LBIS. CONTRACTOR TO VERIFY ALL UNDERGROUNDS IN THE FIELD.
4. CONTRACTOR TO TAKE PRECAUTIONARY STEPS TO AVOID DAMAGE FROM CONSTRUCTION ACTIVITIES TO TREES WITHIN THE LIMITS OF CONSTRUCTION.
5. LOCATION OF EXISTING SERVICES TO BE CONFIRMED IN THE FIELD BY THE CONTRACTOR.
6. CB LEADS TO BE INSTALLED AT MIN. 1.0% SLOPE OR AS DIRECTED BY CONTRACT ADMINISTRATOR.
7. LIMITS OF SIDEWALK RENEWAL TO BE FINALIZED IN THE FIELD BY THE CONTRACT ADMINISTRATOR.
8. LIMITS OF BOULEVARD GRADING TO BE FINALIZED IN THE FIELD BY THE CONTRACT ADMINISTRATOR.
9. APPLY WHITE PIGMENTED CURING COMPOUND IN ACCORDANCE WITH E-XX SINGLE, NONE AND DOUBLE APPLICATIONS OF CURING COMPOUND ON CONCRETE.



**METRIC**

WHOLE NUMBERS INDICATE MILLIMETRES  
DECIMALIZED NUMBERS INDICATE METRES

**WARNING**

IF POWER EQUIPMENT OR EXPLOSIVES ARE TO BE USED FOR EXCAVATION ON THIS PROJECT THE CONTRACTOR MUST:

1. NOTIFY THE GAS COMPANY OF THE PROPOSED LOCATION OF EXCAVATION.
2. TAKE PRECAUTION TO AVOID DAMAGE TO GAS COMPANY INSTALLATIONS SEE PROVINCIAL REGULATION 210/72 FOR DETAILS.
3. OBTAIN EXCAVATION PERMITS PRIOR TO CONSTRUCTION.



Certificate of Authorization  
**Dillon Consulting Limited (MB)**  
No. 1789 Date: 04/22/2014

GA:CAD\138775\Contract\Plan-Profile-Mulvey.dwg

| EXISTING | LEGEND-PLAN         | PROPOSED | EXISTING | LEGEND-PLAN          | PROPOSED | EXISTING | LEGEND-PROFILE      | PROPOSED |
|----------|---------------------|----------|----------|----------------------|----------|----------|---------------------|----------|
| 150 WM   | WATERMAIN           | 150 WM   | HYDRO    | HYDRO                | HYDRO    | 150 WM   | WATERMAIN           | 150 WM   |
| 300 LDS  | HYDRANT VALVE       | 300 LDS  | MTS      | M.T.S.               | MTS      | 300 LDS  | HYDRANT VALVE       | 300 LDS  |
| 250 WWS  | LAND DRAINAGE SEWER | 250 WWS  |          | CONCRETE             |          | 250 WWS  | WASTE WATER SEWER   | 250 WWS  |
|          | WASTE WATER SEWER   |          |          | ASPHALT              |          |          | LAND DRAINAGE SEWER |          |
|          | MANHOLE             |          |          | PLANING              |          |          | WASTE WATER SEWER   |          |
|          | CATCH BASIN         |          |          | SIDEWALK             |          |          | PROFILE             |          |
|          | CURB INLET          |          |          | PAVING STONES        |          |          | NORTH/WEST GUTTER   |          |
|          | JUNCTIONS           |          |          | PARTIAL DEPTH REPAIR |          |          | SOUTH/EAST GUTTER   |          |
|          | CULVERT             |          |          | PROPERTY LINE        |          |          | NORTH/WEST DITCH    |          |
| 100 GAS  | GAS                 | 100 GAS  |          | DRAINAGE ARROW       |          |          | SOUTH/EAST DITCH    |          |
|          |                     |          |          | CURB RAMP            |          |          |                     |          |

**UNDERGROUND STRUCTURES**

SUPPLY, U/G STRUCTURES DATE

LOCATION OF UNDERGROUND STRUCTURES AS SHOWN ARE BASED ON THE BEST INFORMATION AVAILABLE, BUT NO GUARANTEE IS GIVEN THAT ALL EXISTING UTILITIES ARE SHOWN OR THAT THE GIVEN LOCATIONS ARE EXACT. CONFIRMATION OF EXISTENCE AND EXACT LOCATION OF ALL SERVICES MUST BE OBTAINED FROM THE INDIVIDUAL UTILITIES BEFORE PROCEEDING WITH CONSTRUCTION.

| NO. | REVISIONS         | DATE     | BY  |
|-----|-------------------|----------|-----|
| 2   | ISSUED FOR TENDER | 04/22/14 | TJP |
| 1   | ISSUED FOR REVIEW | 04/04/14 | TJP |

| DESIGNED BY | AMC                                |
|-------------|------------------------------------|
| DRAWN BY    | TJH                                |
| CHECKED BY  | ORIGINAL SIGNED BY TARAN J. PETERS |
| APPROVED BY | ORIGINAL SIGNED BY DAVID B. WIEBE  |
| HOR. SCALE  | 1:250                              |
| VERTICAL    | 1:10                               |
| DATE        | 04/22/2014                         |



ENGINEER'S SEAL

PROVINCE OF MANITOBA  
ORIGINAL STAMPED BY  
**T.J. PETERS**  
04/22/2014  
Member  
22309  
REGISTERED PROFESSIONAL ENGINEER

CONSULTANT PROJECT NUMBER  
**13-8775**

**THE CITY OF WINNIPEG**  
PUBLIC WORKS DEPARTMENT

2014 RESIDENTIAL STREET RENEWAL PROGRAM

PLAN-PROFILE - MULVEY AVENUE - STA. 0+190 TO COCKBURN STREET

CITY DRAWING NUMBER  
SHEET **02** OF **14**  
CONSULTANT DRAWING NUMBER