

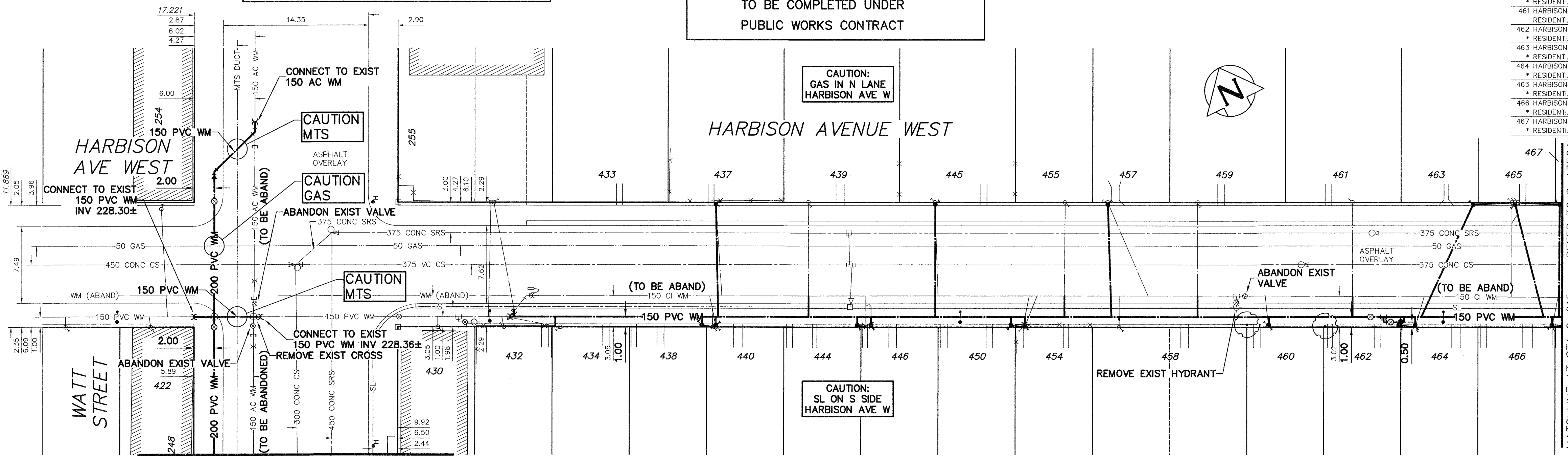
WATER SERVICE INFORMATION

ADDRESS	SIZE (mm)	SIZE (mm)	MATERIAL	MEASUREMENT	CORPORATION	LOCATION	REMARKS
(STREET)	(PROP.)	(PROP.)	(PROP.)	(PROP.)	(PROP.)	(PROP.)	(PROP.)
430 HARBISON AV W	20	12	CU	3.4 W E LOTLINE	OPP	S/C	
432 HARBISON AV W	20	20	CU	0.6 ST/LINE			
433 HARBISON AV W	20	20	CU	2.2 E W BLDG LINE	0.2 W	S/C	
434 HARBISON AV W	20	12	CU	10.5 EEL WATT			
437 HARBISON AV W	12	12	LEAD	0.6 W W HSE LINE	32.0 E	EL WATT	SERVICE BOX PREVIOUSLY RENEWED
438 HARBISON AV W	20	20	CU	31.1 EEL OF WATT	0.3 W	S/C	DBL SERV WITH 440 RENEW TO PROPERTY
439 HARBISON AV W	20	20	CU	1.8 E W HSE LINE	OPP	S/C	REVERSE TAP, PREV. RENEWED ON PROPERTY
440 HARBISON AV W	20	20	CU	0.9 E E HSE LINE	0.3 W	S/C	DBL SERV WITH 438 RENEW TO PROPERTY
444 HARBISON AV W	20	12	LEAD	0.5 E W LOTLINE	OPP	S/C #444	DBL SERV WITH 446 RENEW TO PROPERTY
445 HARBISON AV W	12	12	LEAD	3.1 E W LOTLINE	53.3 E	EL WATT	RENEW TO PROPERTY
446 HARBISON AV W	20	12	LEAD	53.0 EEL WATT			DBL SERV WITH 444 RENEW TO PROPERTY
450 HARBISON AV W	20	12	CU	0.2 E W HSE LINE 454	63.1 E	EL WATT	RENEW TO PROPERTY
454 HARBISON AV W	20	12	CU	61.9 EEL WATT	0.6 E	S/C	RENEW TO PROPERTY
455 HARBISON AV W	20	20	CU	0.3 E W HSE LINE	OPP	S/C	VACANT LOT
457 HARBISON AV W	16	12	LEAD	2.7 W E LOTLINE	74.1 E	EL WATT	RENEW TO PROPERTY
458 HARBISON AV W	20	20	CU	0.9 E W HSE LINE	OPP	S/C	
459 HARBISON AV W	20	20	CU	1.1 W W HSE LINE	11.9 W	1ST HYD E WATT	
460 HARBISON AV W	20	20	CU	1.8 E W HSE LINE	OPP	S/C	
461 HARBISON AV W	12	12	LEAD	78.9 EEL WATT	85.7 E	EL WATT	RENEW TO PROPERTY
462 HARBISON AV W	20	20	CU	0.6 E W HSE LINE	OPP	S/C	REVERSE TAP
463 HARBISON AV W	20	12	LEAD	6.3 EWL HOUSE	0.9 E	S/C	DBL SERV 464 HARBISON RENEW TO PROPERTY
464 HARBISON AV W	20	12	LEAD	99.7 EEL WATT	3.1 E	W HSE LINE	TRIPLE SERV WITH 465 & 467 SGL SUPPL 463 DBL SUPPLIES 465/7 RENEW TO PL
465 HARBISON AV W	12	12	LEAD	109.1 EEL WATT	0.9 E	S/C	DBL SERV 462 HARBISON RENEW TO PROPERTY
466 HARBISON AV W	16	12	LEAD	1.7 E E HSE LINE	0.3 W	S/C	TRIPLE SERV WITH 463& 467 - S/C IN FRONT OF 465 RENEW TO PROPERTY
467 HARBISON AV W	16	12	LEAD	3.2 E W HSE LINE	114.6 E	EL WATT	DBL SERV 468 HARBISON RENEW TO PROPERTY
				109.1 EEL WATT	3.4 E	W HSE LINE	TRIPLE SERV W/ 463& 465 - S/C IN FRONT OF 465 RENEW TO PROPERTY

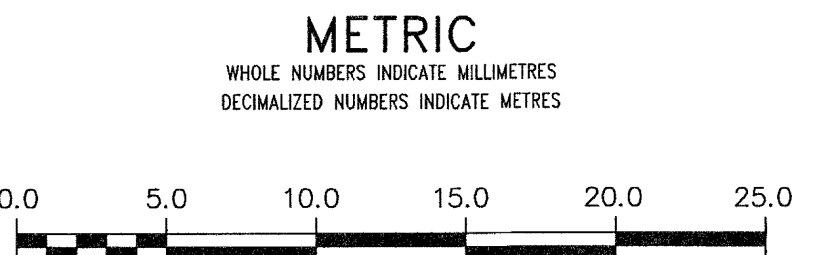
NOTE: CHAINAGES SHOWN ARE ALONG S. P. OF HARBISON AVE

NOTE: PERMANENT PAVEMENT RESTORATION TO BE COMPLETED UNDER PUBLIC WORKS CONTRACT

NOTE: REPLACE ALL EXISTING LEAD SERVICES FROM THE PROPOSED WATERMAIN TO PROPERTY LINE. RECONNECT ALL OTHER SERVICES UNLESS NOTED. LOCATION OF WATER SERVICES SHOWN ON DRAWINGS ARE APPROXIMATE. THE CONTRACTOR SHALL FIELD LOCATE ALL WATER SERVICES PRIOR TO CONSTRUCTION.



CONTINUATION - REFER TO D-13522



WARNING
IF POWER EQUIPMENT OR EXPLOSIVES ARE TO BE USED FOR EXCAVATION ON THIS PROJECT THE CONTRACTOR MUST:
1) NOTIFY THE GAS COMPANY OF THE PROPOSED LOCATION OF EXCAVATION.
2) TAKE PRECAUTION TO AVOID DAMAGE TO GAS COMPANY INSTALLATIONS.
SEE PROVINCIAL REGULATION 210/72 FOR DETAILS

LOCATION APPROVED UNDERGROUND STRUCTURES
SUPV. U/G STRUCTURES COMMITTEE DATE
NOTE: LOCATION OF UNDERGROUND STRUCTURES AS SHOWN ARE BASED ON THE BEST INFORMATION AVAILABLE BUT NO GUARANTEE IS GIVEN THAT ALL EXISTING UTILITIES ARE SHOWN OR THAT THE GIVEN LOCATIONS ARE EXACT. CONFIRMATION OF EXISTENCE AND EXACT LOCATION OF ALL SERVICES MUST BE OBTAINED FROM THE INDIVIDUAL UTILITIES BEFORE PROCEEDING WITH CONSTRUCTION.

B.M. 27-031
ELEV. 231.023m
CONSTRUCTION COMPLETION DATE:

NO.	REVISIONS	DATE	BY
0	ISSUED FOR TENDER	14/03/25	GSK
A	ISSUED FOR REVIEW	14/03/19	GSK

AECOM

DESIGNED BY GK
DRAWN BY JP
CHECKED BY [Signature]
APPROVED BY [Signature]
RELEASED FOR CONSTRUCTION

SCALE:
HORIZONTAL 1:250
VERTICAL 1:50

DATE: 2014 03 20

ENGINEER'S SEAL
PROVINCE OF MANITOBA
K.W.
FITCHETT
REGISTERED PROFESSIONAL ENGINEER
CONSULTANT DRAWING NUMBER
C-1007

THE CITY OF WINNIPEG
WATER AND WASTE DEPARTMENT
ENGINEERING DIVISION

2014 WATERMAIN RENEWALS
CONTRACT 2
HARBISON AVENUE WEST
WATT STREET TO
115m EAST OF WATT STREET

SHEET 8 OF 15
CITY DRAWING NUMBER
D-13523

AECOM
Certificate of Authorization
AECOM Canada Ltd.
No. 4671 Date: 2014/03/19

ALL VALVES TO BE COUNTER-CLOCKWISE TO CLOSE (RED OPERATING NUT)