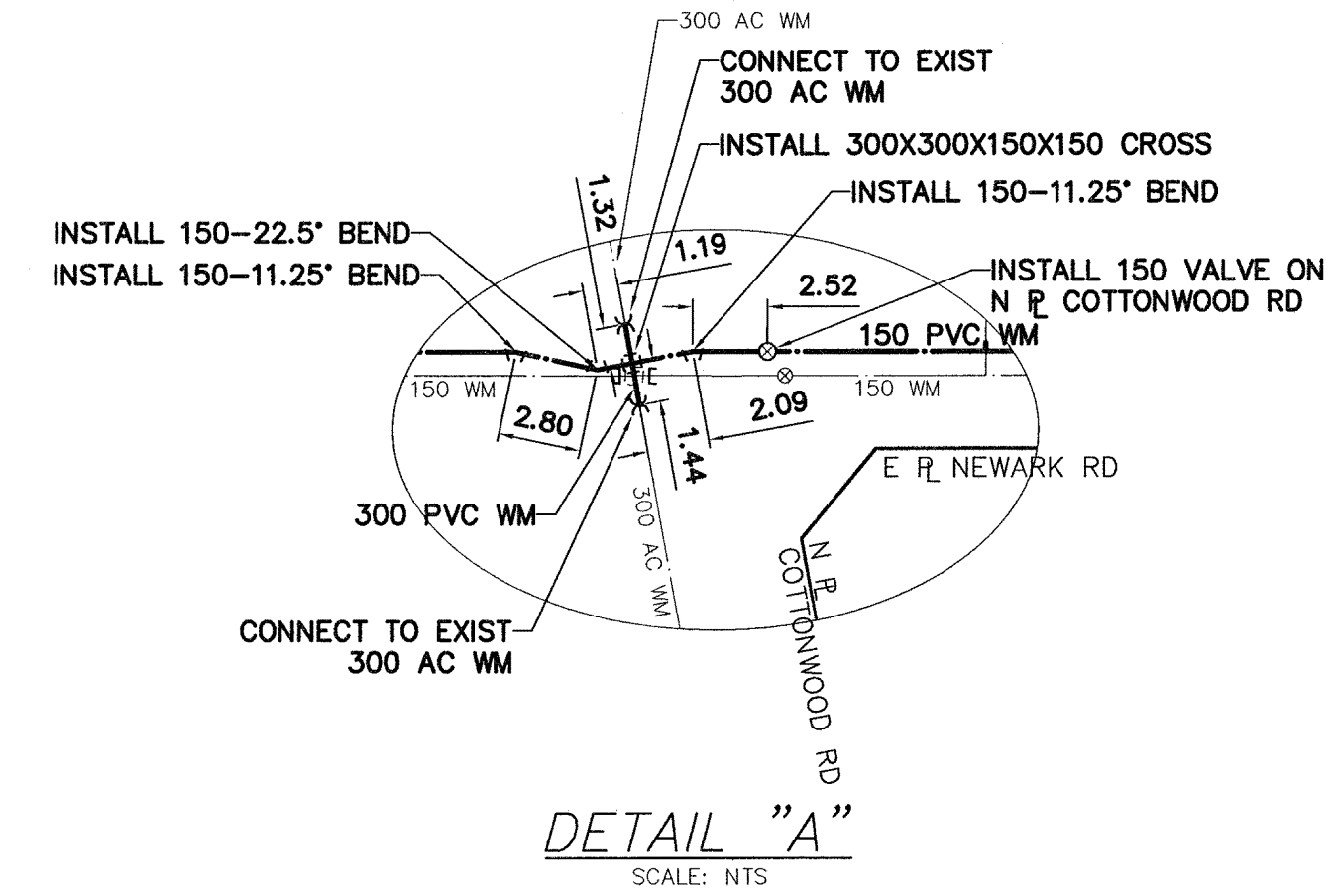


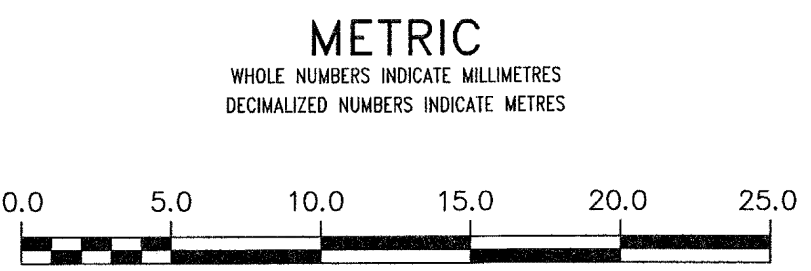
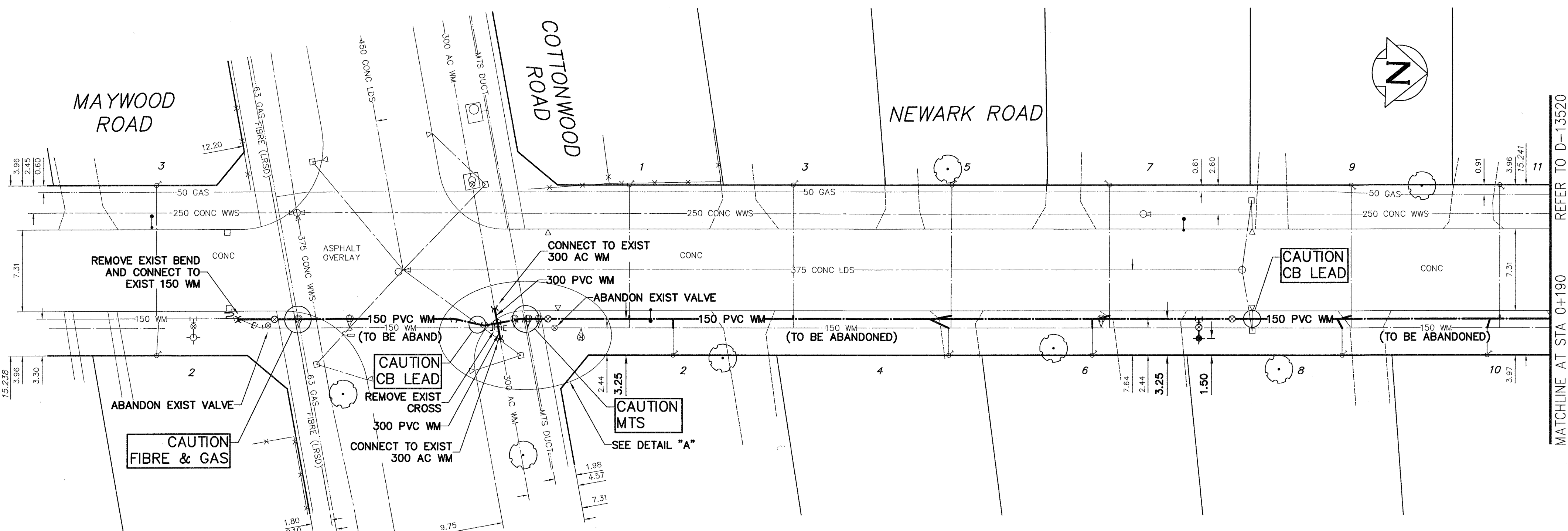
NOTE: CHAINAGES SHOWN ARE ALONG E. P. OF NEWARK RD



WATER SERVICE INFORMATION

ADDRESS	SIZE (mm) MATERIAL (STREET)	SIZE (mm) MATERIAL (PROP.)	SHORT & LONG MEASUREMENT	CORPORATION LOCATION	REMARKS
1 NEWARK RD	-	20	5.9 R OF L COR OF HSE		
2 NEWARK RD	-	20	5.2 R OF L COR OF HSE		
3 NEWARK RD	-	20	4.0 L OF R COR OF HSE		
4 NEWARK RD	-	20	0.3 R OF L COR OF HSE		
5 NEWARK RD	-	20	3.1 R OF L COR OF HSE		
6 NEWARK RD	-	20	5.2 R OF L COR OF HSE		
7 NEWARK RD	20	20	2.0 N S BLDG LINE	OPP S/C	
8 NEWARK RD	-	20	1.4 R OF L COR OF HSE		
9 NEWARK RD	-	20	6.9 L OF R COR OF HSE		
10 NEWARK RD	-	20	6.1 R OF L COR OF HSE		
11 NEWARK RD	-	20	0.9 N S HSE LINE		SERVICE BOX PREVIOUSLY RENEWED

NOTE: REPLACE ALL EXISTING LEAD SERVICES FROM THE PROPOSED WATERMAIN TO PROPERTY LINE. RECONNECT ALL OTHER SERVICES UNLESS NOTED. LOCATION OF WATER SERVICES SHOWN ON DRAWINGS ARE APPROXIMATE. THE CONTRACTOR SHALL FIELD LOCATE ALL WATER SERVICES PRIOR TO CONSTRUCTION.



WARNING
IF POWER EQUIPMENT OR EXPLOSIVES ARE TO BE USED FOR EXCAVATION ON THIS PROJECT THE CONTRACTOR MUST:
1) NOTIFY THE GAS COMPANY OF THE PROPOSED LOCATION OF EXCAVATION.
2) TAKE PRECAUTION TO AVOID DAMAGE TO GAS COMPANY INSTALLATIONS.
SEE PROVINCIAL REGULATION 210/72 FOR DETAILS

LOCATION APPROVED UNDERGROUND STRUCTURES
SUPV. U/G STRUCTURES COMMITTEE DATE
NOTE: LOCATION OF UNDERGROUND STRUCTURES AS SHOWN ARE BASED ON THE BEST INFORMATION AVAILABLE BUT NO GUARANTEE IS GIVEN THAT ALL EXISTING UTILITIES ARE SHOWN OR THAT THE GIVEN LOCATIONS ARE EXACT. CONFIRMATION OF EXISTENCE AND EXACT LOCATION OF ALL SERVICES MUST BE OBTAINED FROM THE INDIVIDUAL UTILITIES BEFORE PROCEEDING WITH CONSTRUCTION.

B.M. 55-010
ELEV. 232.498m
S.W. Cor. Cottonwood Rd. & Westmount Dr., Tblt. In Conc. foundation of Windsor Park Baptist Church, 1.5 m E. of straight production of W. wall & 0.8 m below brick of N.W. Cor. of Bldg.

NO.	REVISIONS	DATE	BY
0	ISSUED FOR TENDER	14/03/25	GSK
A	ISSUED FOR REVIEW	14/03/19	GSK

AECOM

DESIGNED BY: GK
CHECKED BY: [Signature]
DRAWN BY: JP
APPROVED BY: [Signature]
RELEASED FOR CONSTRUCTION: [Signature]

SCALE: HORIZONTAL 1:250
VERTICAL 1:50

DATE: 2014 03 20

ENGINEER'S SEAL
PROVINCE OF MANITOBA
K.W. FITCHETT
REGISTERED PROFESSIONAL ENGINEER

CONSULTANT DRAWING NUMBER: C-1003

THE CITY OF WINNIPEG
WATER AND WASTE DEPARTMENT
ENGINEERING DIVISION

2014 WATERMAIN RENEWALS
CONTRACT 2
NEWARK ROAD
COTTONWOOD ROAD TO
90m NORTH OF COTTONWOOD ROAD

SHEET 4 OF 15
CITY DRAWING NUMBER: D-13519