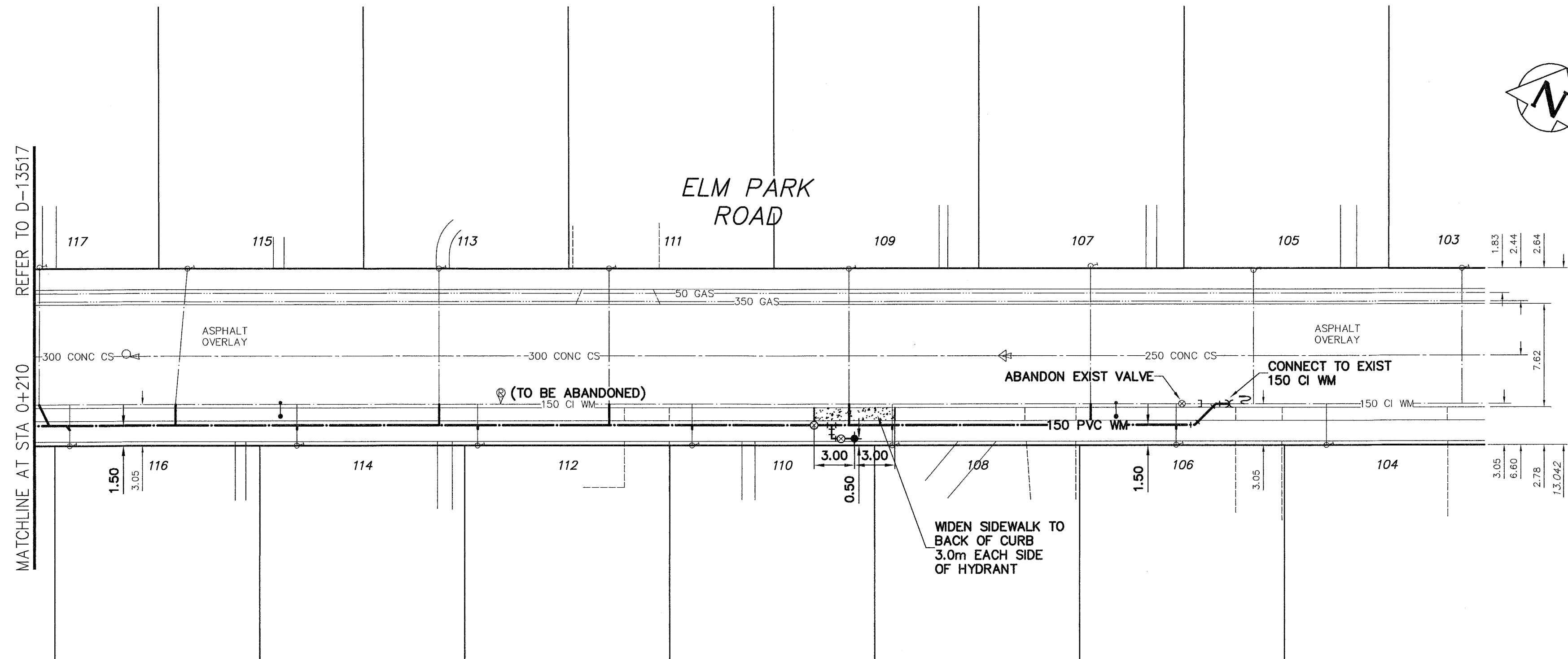


NOTE: CHAINAGES SHOWN ARE ALONG S. P. OF ELM PARK RD



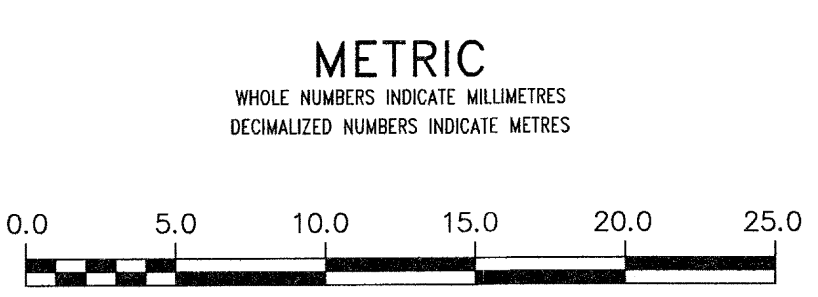
WATER SERVICE INFORMATION

ADDRESS	SIZE (mm)	SIZE (mm)	MATERIAL	MATERIAL	SHORT & LONG MEASUREMENT	CORPORATION	LOCATION	REMARKS
	(STREET)	(PROP.)						
106 ELM PARK RD			20	CU	4.3 W E HSE LINE			
RESIDENTIAL								
107 ELM PARK RD			12	CU	3.8 W E HSE LINE			
RESIDENTIAL								
108 ELM PARK RD			20	CU	W HSE LINE			
RESIDENTIAL								
109 ELM PARK RD			12	CU	4.3 E W HSE LINE			
RESIDENTIAL								
110 ELM PARK RD			20	CU	W HSE LINE			
RESIDENTIAL								
111 ELM PARK RD			20	CU	1.5 E W HSE LINE			
RESIDENTIAL								
112 ELM PARK RD			20	CU	0.3 W W HSE LINE			
RESIDENTIAL								
113 ELM PARK RD			20	CU	1.8 R OF L COR OF HSE			
RESIDENTIAL								
114 ELM PARK RD			20	CU	0.9 E W HSE LINE			
RESIDENTIAL								
115 ELM PARK RD	20	20	LEAD	CU	0.3 W HSE LINE	0.3 W S/C		S/C PREVIOUSLY RENEWED
RESIDENTIAL								
116 ELM PARK RD			20	CU	W HSE LINE			
RESIDENTIAL								
117 ELM PARK RD	20	20	5.8 R OF L COR OF HSE	CU	5.3 EW M/H	OPP S/C		
RESIDENTIAL								

NOTE: REPLACE ALL EXISTING LEAD SERVICES FROM THE PROPOSED WATERMAIN TO PROPERTY LINE. RECONNECT ALL OTHER SERVICES UNLESS NOTED. LOCATION OF WATER SERVICES SHOWN ON DRAWINGS ARE APPROXIMATE. THE CONTRACTOR SHALL FIELD LOCATE ALL WATER SERVICES PRIOR TO CONSTRUCTION.



ALL VALVES TO BE CLOCKWISE TO CLOSE (BLACK OPERATING NUT)



WARNING
IF POWER EQUIPMENT OR EXPLOSIVES ARE TO BE USED FOR EXCAVATION ON THIS PROJECT THE CONTRACTOR MUST:
1) NOTIFY THE GAS COMPANY OF THE PROPOSED LOCATION OF EXCAVATION.
2) TAKE PRECAUTION TO AVOID DAMAGE TO GAS COMPANY INSTALLATIONS.
SEE PROVINCIAL REGULATION 210/02 FOR DETAILS

LOCATION APPROVED UNDERGROUND STRUCTURES
SUPV. U/G STRUCTURES COMMITTEE: _____ DATE: _____
NOTE: LOCATION OF UNDERGROUND STRUCTURES AS SHOWN ARE BASED ON THE BEST INFORMATION AVAILABLE BUT NO GUARANTEE IS GIVEN THAT ALL EXISTING UTILITIES ARE SHOWN OR THAT THE GIVEN LOCATIONS ARE EXACT. CONFIRMATION OF EXISTENCE AND EXACT LOCATION OF ALL SERVICES MUST BE OBTAINED FROM THE INDIVIDUAL UTILITIES BEFORE PROCEEDING WITH CONSTRUCTION.

B.M. 54-021
ELEV. 230.874m
82R543-S.W. Cor. Kingston Row & Killarney St., Tbt. on top of 0.05 m dia. x 2.4 m iron pipe, 1.4 m N. of S.L. Kingston Row & 11.6 m W. of E.L. Killarney St.

NO.	ISSUED FOR TENDER	DATE	BY
0	ISSUED FOR TENDER	14/03/25	GSK
A	ISSUED FOR REVIEW	14/03/19	GSK

AECOM

DESIGNED BY: GK
DRAWN BY: JP
SCALE: HORIZONTAL 1:250, VERTICAL 1:50
CHECKED BY: [Signature]
APPROVED BY: [Signature]
RELEASED FOR CONSTRUCTION: [Signature]
DATE: _____



THE CITY OF WINNIPEG
WATER AND WASTE DEPARTMENT
ENGINEERING DIVISION

2014 WATERMAIN RENEWALS
CONTRACT 2
ELM PARK ROAD
110m EAST OF EDINBURGH STREET TO
196m EAST OF EDINBURGH STREET

SHEET 3 OF 15
CITY DRAWING NUMBER
D-13518

CONSULTANT DRAWING NUMBER: C-1002