

A1 SIZE 594mm x 841mm
PLOT: 4/9/2014 2:28:20 PM
FILE NAME: W130014-T-002_RX.dwg Saved By: ddbszpzd

MATCHLINE - STA 1+040.000 DWG No. 6

MATCHLINE - STA 0+340

MATCHLINE - STA 0+470 DWG No. 3

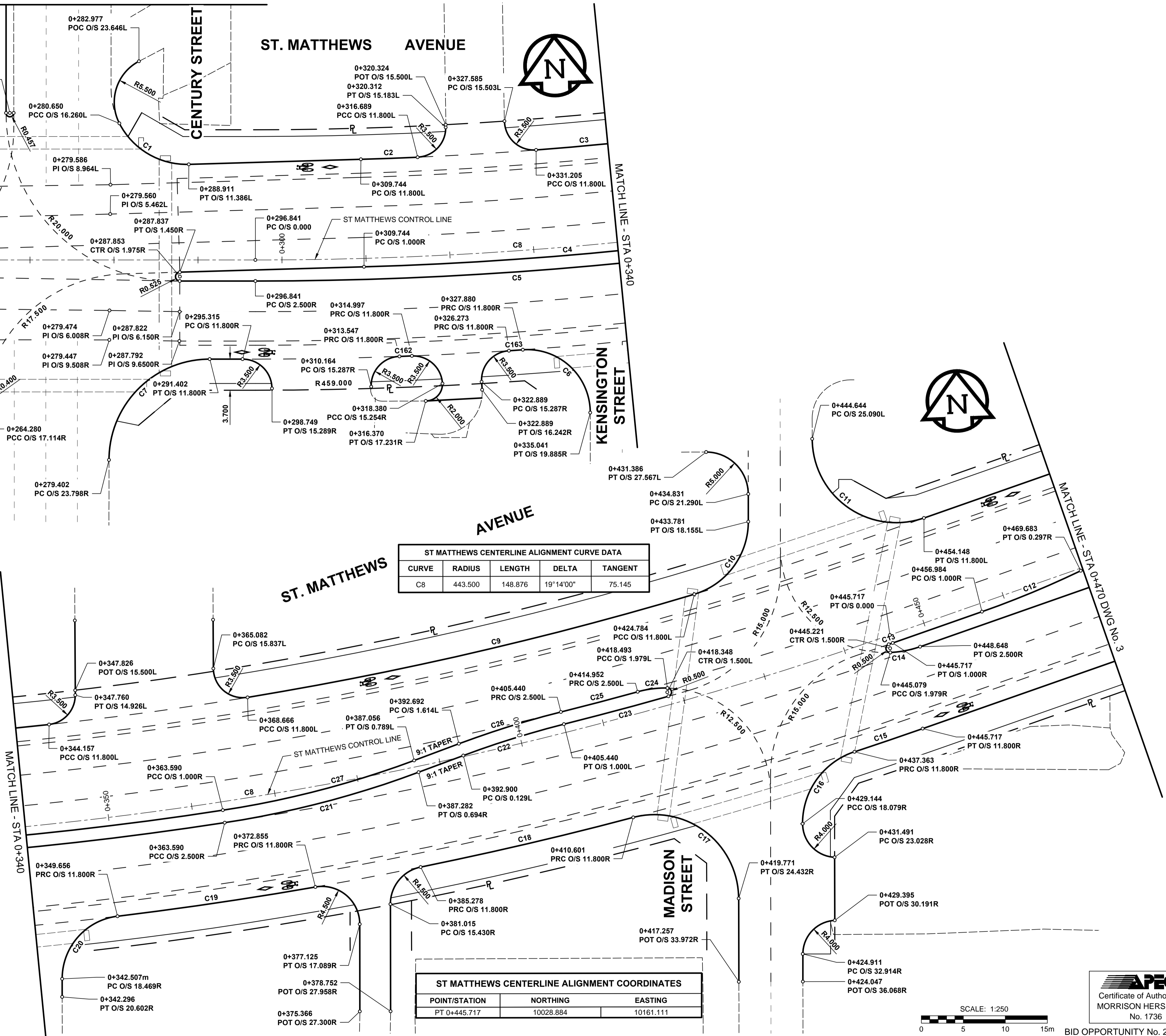
| ST MATTHEWS CENTERLINE ALIGNMENT COORDINATES | | |
|--|-----------|-----------|
| POINT/STATION | NORTHING | EASTING |
| POT 0+210.000 | 10012.106 | 9927.464 |
| PC 0+296.841 | 10009.138 | 10014.254 |

| CIRCULAR CURVE DATA | | | | |
|---------------------|---------|--------|-----------|---------|
| CURVE | RADIUS | LENGTH | DELTA | TANGENT |
| C1 | 9.000 | 10.116 | 64°24'05" | 5.668 |
| C2 | 431.700 | 6.760 | 0°53'50" | 3.380 |
| C3 | 431.700 | 12.607 | 1°40'24" | 6.304 |
| C4 | 444.500 | 53.968 | 6°57'23" | 27.017 |
| C5 | 446.000 | 67.126 | 8°37'24" | 33.626 |
| C6 | 7.500 | 12.306 | 94°00'36" | 8.044 |
| C7 | 12.000 | 18.848 | 89°59'30" | 11.998 |
| C162 | 455.300 | 1.488 | 0°11'14" | 0.744 |
| C163 | 455.300 | 1.650 | 0°12'27" | 0.825 |

| ST MATTHEWS CENTERLINE ALIGNMENT CURVE DATA | | | | |
|---|---------|---------|-----------|---------|
| CURVE | RADIUS | LENGTH | DELTA | TANGENT |
| C8 | 443.500 | 148.876 | 19°14'00" | 75.145 |

| CIRCULAR CURVE DATA | | | | |
|---------------------|---------|--------|------------|---------|
| CURVE | RADIUS | LENGTH | DELTA | TANGENT |
| C9 | 431.700 | 54.624 | 7°14'59" | 27.349 |
| C10 | 9.000 | 11.544 | 73°29'19" | 6.719 |
| C11 | 10.000 | 19.062 | 109°12'57" | 14.075 |
| C12 | 115.000 | 12.726 | 6°20'25" | 6.369 |
| C13 | 444.500 | 0.498 | 0°03'51" | 0.249 |
| C14 | 12.500 | 3.622 | 16°36'09" | 1.824 |
| C15 | 455.300 | 8.576 | 1°04'45" | 4.288 |
| C16 | 9.000 | 11.290 | 71°52'25" | 6.524 |
| C17 | 10.000 | 18.268 | 104°40'08" | 12.955 |
| C18 | 455.300 | 25.997 | 3°16'18" | 13.002 |
| C19 | 455.300 | 23.817 | 2°59'50" | 11.911 |
| C20 | 7.500 | 10.888 | 83°10'37" | 6.656 |
| C21 | 116.500 | 23.885 | 11°44'48" | 11.984 |
| C22 | 113.500 | 12.560 | 6°20'25" | 6.286 |
| C23 | 442.500 | 12.879 | 1°40'03" | 6.440 |
| C24 | 12.500 | 3.574 | 16°22'48" | 1.799 |
| C25 | 441.000 | 9.459 | 1°13'44" | 4.730 |
| C26 | 115.000 | 12.726 | 6°20'25" | 6.369 |
| C27 | 115.000 | 23.577 | 11°44'48" | 11.830 |

| ST MATTHEWS CENTERLINE ALIGNMENT COORDINATES | | |
|--|-----------|-----------|
| POINT/STATION | NORTHING | EASTING |
| PT 0+445.717 | 10028.884 | 10161.111 |



LOCATION APPROVED
UNDERGROUND STRUCTURES

SUPR. U/G STRUCTURES COMMITTEE DATE

NOTE:
LOCATION OF UNDERGROUND STRUCTURES AS SHOWN ARE BASED ON THE BEST INFORMATION AVAILABLE. BUT NO GUARANTEE IS GIVEN THAT ALL EXISTING UTILITIES ARE SHOWN OR THAT THE GIVEN LOCATIONS ARE EXACT. CONFIRMATION OF EXISTENCE AND EXACT LOCATION OF ALL SERVICES MUST BE OBTAINED FROM THE INDIVIDUAL UTILITIES BEFORE PROCEEDING WITH CONSTRUCTION.

METRIC
WHOLE NUMBERS INDICATE MILLIMETRES
DECIMAL NUMBERS INDICATE METRES

GBM SEE DWG No.1
ELEV SEE DWG No.1

| | | | |
|-----|-------------------------|----------|-----|
| 0 | ISSUED FOR CONSTRUCTION | 14/04/04 | RPB |
| No. | REVISIONS | YYMMDD | BY |

MORRISON HERSHFIELD

| | | | |
|-------------|---------|---------------------------|----------|
| DESIGNED BY | WRJ | CHECKED BY | RPB |
| DRAWN BY | DID/DML | APPROVED BY | BWB |
| HOR. SCALE | 1:250 | RELEASED FOR CONSTRUCTION | |
| VERT. SCALE | | DATE | 14/04/04 |

DATE: 14/04/04

PROFESSIONAL'S SEAL

PROVINCE OF MANITOBA
REGISTERED PROFESSIONAL ENGINEER
R.P. BRUCE
CONSULTANT DRAWING No.
W130014-T-002_RX.dwg

THE CITY OF WINNIPEG
PUBLIC WORKS DEPARTMENT
ENGINEERING DIVISION

POLO PARK
INFRASTRUCTURE IMPROVEMENTS
ST. MATTHEWS AVENUE
HORIZONTAL GEOMETRY
STA 0+210 TO STA 0+470

CITY DRAWING NUMBER: P-3354-2
SHEET 2 OF 61
DRAWING No. 2
REV 0

BID OPPORTUNITY No. 210-2014