

**DRAWING LIST**

No.	DESCRIPTION
0	COVER SHEET AND LOCATION PLAN
1	KEY PLAN AND DRAWING LIST & HORIZONTAL AND VERTICAL CONTROL

**HORIZONTAL GEOMETRY**

**ST MATTHEWS AVENUE**

2	STA 0+210 TO STA 0+470
3	STA 0+470 TO STA 0+710
4	STA 0+710 TO STA 0+950
5	STA 0+950 TO STA 1+190

**KING EDWARD STREET EAST**

6	STA 1+040 TO STA 1+150
---	------------------------

**ELLICE AVENUE**

7	STA 0+490 TO STA 0+760
8	STA 0+760 TO STA 0+890

**ST JAMES STREET**

9	STA 0+800 TO STA 1+020
10	STA 1+020 TO STA 1+280
11	STA 1+280 TO STA 1+520
12	STA 1+520 TO STA 1+770

**HORIZONTAL AND VERTICAL ALIGNMENT**

**ST MATTHEWS AVENUE**

13	STA 0+210 TO STA 0+340
14	STA 0+340 TO STA 0+470
15	STA 0+470 TO STA 0+590
16	STA 0+590 TO STA 0+710
17	STA 0+710 TO STA 0+830
18	STA 0+830 TO STA 0+950
19	STA 0+950 TO STA 1+070
20	STA 1+070 TO STA 1+190

**KING EDWARD STREET EAST**

21	NORTH OF ST MATTHEWS AVENUE
----	-----------------------------

**ELLICE AVENUE**

22	STA 0+490 TO STA 0+630
23	STA 0+630 TO STA 0+760
24	STA 0+760 TO STA 0+890

**ST JAMES STREET**

25	STA 0+800 TO STA 0+910
26	STA 0+910 TO STA 1+020
27	STA 1+020 TO STA 1+150
28	STA 1+150 TO STA 1+280
29	STA 1+280 TO STA 1+400
30	STA 1+400 TO STA 1+520
31	STA 1+520 TO STA 1+640
32	STA 1+640 TO STA 1+770

**PAVEMENT CROSS SECTIONS**

33	ST MATTHEWS AVENUE
34	KING EDWARD STREET EAST & ELLICE AVENUE
35	ST JAMES STREET

**UNDERGROUND WORKS**

36	KEY PLAN AND DRAWING LIST SEWER AND WATER
----	---

**ST MATTHEWS AVENUE**

37	CATCHBASIN CONNECTIONS EAST OF CENTURY STREET
38	MADISON TO STA 0+540
39	STA 0+540 TO STA 0+660
40	STA 0+660 TO STA 0+775
41	STA 0+775 TO STA 0+890
42	STA 0+890 TO STA 1+010
43	STA 1+010 TO STA 1+130

**ELLICE AVENUE**

44	CENTURY TO STA 0+590
45	STA 0+590 TO STA 0+715
46	STA 0+715 TO STA 0+830
47	STA 0+830 TO STA 0+950
48	STA 0+950 TO STA 1+085

**ST JAMES STREET**

49	STA 0+800 TO STA 0+910
50	STA 0+910 TO STA 1+020
51	STA 1+020 TO STA 1+150
52	STA 1+150 TO STA 1+280
53	STA 1+280 TO STA 1+400
54	STA 1+400 TO STA 1+520
55	STA 1+520 TO STA 1+640
56	STA 1+640 TO STA 1+790

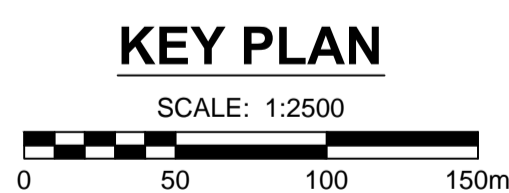
**OMAND'S CREEK OUTFALLS**

57	ST MATTHEWS AVENUE OMAND'S CREEK OUTFALLS
58	ELLICE AVENUE OMAND'S CREEK OUTFALL
59	OUTFALL DETAILS
60	OMAND'S CREEK SLOPE STABILIZATION

**STREETSCAPING**  
61 DETAILS

SURVEY BAR-HORIZONTAL CONTROL POINTS-PROJECT COORDINATES				NAD83 DATUM			
CONTROL POINT	LOCATION	NORTHING	EASTING	ELEVATION	NORTHING	EASTING	ELEVATION
#1	O/S SURVEY BAR @ SE CRN ST MATTHEWS AVE AND KING EDWARD ST	10006.236	9817.199	233.918	5528007.812	628713.178	-
#2	SURVEY BAR @ SE CRN ST MATTHEWS AVE AND MADISON ST	9991.694	10153.220	234.225	5527993.273	629049.123	-
#3	SURVEY BAR @ NW CRN ELLICE AVE AND CENTURY ST	10441.148	10150.739	234.343	5528442.626	629046.643	-
#4	SURVEY BAR @ SW CRN ELLICE AVE AND EMPRESS ST	10401.310	10679.820	233.807	5528402.796	629575.606	-
#5	SURVEY BAR @ NW CRN ST MATTHEWS AVE AND EMPRESS ST	10067.398	10671.196	233.788	5528068.960	629556.236	-
#6	SURVEY BAR @ NW CRN ST MATTHEWS AVE AND MILT STEGALL DR	10071.171	10498.639	233.869	-	-	-

NOTE: THE PROJECT DRAWINGS HAVE A SCALE FACTOR OF 1.000247399 APPLIED TO LBS INFORMATION TO MATCH LOCAL SURVEYED PROJECT COORDINATES



**METRIC**  
WHOLE NUMBERS INDICATE MILLIMETRES  
DECIMALIZED NUMBERS INDICATE METRES

GEODETIC BENCHMARK-VERTICAL CONTROL POINTS		
GBM	LOCATION	ELEVATION
38-022	Century & King Edward St. in center median Blvd 97m north of St Matthews, Tblt. in 7.6 m Conc. pile.	234.744m
37-066	N.E. Cor. Ellice Ave. & Milt Stegall Dr., Brass plug in 7.3m Conc. pile 2.5 m N. of N.L. Ellice Ave., 2.5 m W.	233.854m
37-037	N.E. Cor. St. Matthews Ave. & St. James St., Tblt. in S. Conc. foundation No. 945 St. James St., 17.5	234.171m

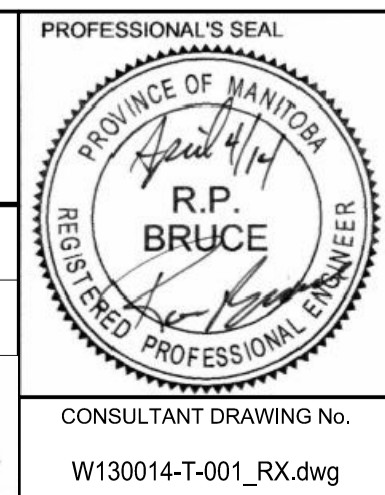
**LOCATION APPROVED**  
UNDERGROUND STRUCTURES

SUPR. U/G STRUCTURES COMMITTEE DATE

NOTE:  
LOCATION OF UNDERGROUND STRUCTURES AS SHOWN ARE BASED ON THE BEST INFORMATION AVAILABLE. BUT NO GUARANTEE IS GIVEN THAT ALL EXISTING UTILITIES ARE SHOWN OR THAT THE GIVEN LOCATIONS ARE EXACT. CONFIRMATION OF EXISTENCE AND EXACT LOCATION OF ALL SERVICES MUST BE OBTAINED FROM THE INDIVIDUAL UTILITIES BEFORE PROCEEDING WITH CONSTRUCTION.

GBM	N/A	ELEV	N/A
0	ISSUED FOR CONSTRUCTION	14/04/04	RPB
No.	REVISIONS	YYMMDD	BY

MORRISON HERSHFIELD			
DESIGNED BY	WRJ/RPB/GFN	CHECKED BY	RPB
DRAWN BY	DID/DML	APPROVED BY	BWB
HOR. SCALE	1:2500	RELEASED FOR CONSTRUCTION	
VERT. SCALE	-	DATE	14/04/04



**THE CITY OF WINNIPEG**  
PUBLIC WORKS DEPARTMENT  
ENGINEERING DIVISION

**POLO PARK**  
INFRASTRUCTURE IMPROVEMENTS  
ST MATTHEWS AVENUE, ST JAMES STREET  
KING EDWARD STREET EAST & ELLICE AVENUE  
KEY PLAN AND DRAWING LIST & HORIZONTAL AND VERTICAL CONTROL

CITY DRAWING NUMBER: P-3354-1  
SHEET 1 OF 61  
DRAWING No. 1  
REV 0