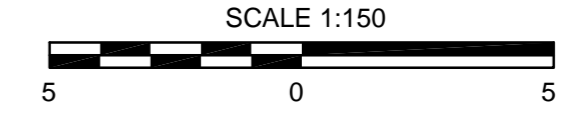
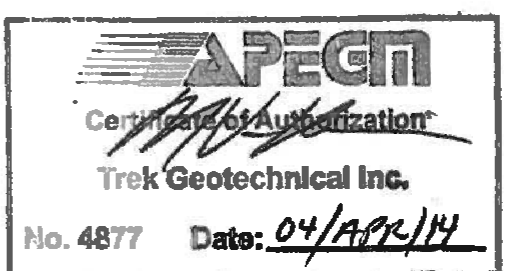


NOTE:  
TH4 DRILLED BEFORE 2009 BOX CULVERT  
PROJECT (BID OP. 801-2009)

1 TYPICAL GRANULAR RIB SECTION  
1 : 150

CONSTRUCTION NOTES

1. OUTFALL PIPING TO BE INSTALLED WITH CLASS B BEDDING, 300mm DRAINAGE COURSE, (TYPE 3 MATERIAL) PIPE BEDDING AND BACKFILL (TYPE 3 MATERIAL), AND CLASS 4 BACKFILL.
2. PIPE SURROUND TO INCLUDE GEOTEXTILE WRAP.
3. SURFACE RESTORATION WITH SOIL AMENDMENT (PEAT MOSS AND SAND) AND NATIVE GRASS SEEDING.
4. ALL PIPING UNDER EXISTING OR FUTURE PAVEMENTS TO BE INSTALLED BY TRENCHLESS METHODS OR WITH CLASS 2 BACKFILL.
5. NO STOCKPILING OF MATERIAL NEAR TOP OF CREEK BANK.
6. EXISTING TREES AND SHRUBS TO REMAIN.
7. NO WORK IN VICINITY OF CREEK APRIL 1 - JUNE 15.
8. CONSTRUCT RIBS BY EXCAVATING. INSTALLING ROCKFILL, COMPACTING, ONE RIB AT A TIME.



BID OPPORTUNITY No. 210-2014

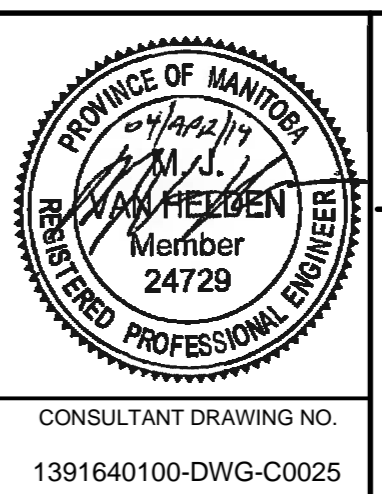
EXISTING	LEGEND-PLAN	PROPOSED	EXISTING	LEGEND-PLAN	PROPOSED	EXISTING	LEGEND-PLAN	PROPOSED
150 WM	WATERMAIN	---	BEND	---	ANCHOR	---	LOCATION APPROVED UNDERGROUND STRUCTURES	
400 FM	FEEDERMAIN	---	TEE	---	HYDRO BOX	---		
300 LDS	LAND DRAINAGE SEWER	---	COUPLING	---	HYDRO POLE	---		
250 WWS	WASTEWATER SEWER	---	REDUCER	---	SIGNAL CONTROLLER	---		
300 CS	COMBINED SEWER	---	ANODE	---	RIGHT-OF-WAY	---		
200 FCM	FORCEMAIN	---	MANHOLE	---	GAS	---		
	JUNCTIONS	---	CATCHBASIN	---	HYDRO	---		
	HYDRANT	---	LIGHT STANDARD	---	MTS	---		
	VALVE	---	TREE	---	SUBDRAINS	---		
	CURB STOP	---	SURVEY BAR	---		---		

SUPV. U/G STRUCTURES COMMITTEE	DATE

NOTE:  
LOCATION OF UNDERGROUND STRUCTURES AS SHOWN ARE BASED ON THE BEST INFORMATION AVAILABLE. BUT NO GUARANTEE IS GIVEN THAT ALL EXISTING UTILITIES ARE SHOWN OR THAT THE GIVEN LOCATIONS ARE EXACT. CONFIRMATION OF EXISTENCE AND EXACT LOCATION OF ALL SERVICES MUST BE OBTAINED FROM THE INDIVIDUAL UTILITIES BEFORE PROCEEDING WITH CONSTRUCTION.

GBM ELEV.	SEE DWG No. 1

DESIGNED BY	CHECKED BY
MJVH	NJF
DRAWN BY	APPROVED BY
GMD	KJM
HOR. SCALE:	VERT. SCALE:
1 : 150	
DATE	DATE
14/03/14	



**THE CITY OF WINNIPEG**  
PUBLIC WORKS DEPARTMENT  
ENGINEERING DIVISION

2013 POLO PARK  
INFRASTRUCTURE IMPROVEMENTS

**OMAND'S CREEK SLOPE STABILIZATION**

CITY DRAWING NUMBER LD-7341  
SHEET 60 OF 61  
DRAWING No. 60 REV 0

CONSULTANT DRAWING NO. 1391640100-DWG-C0025