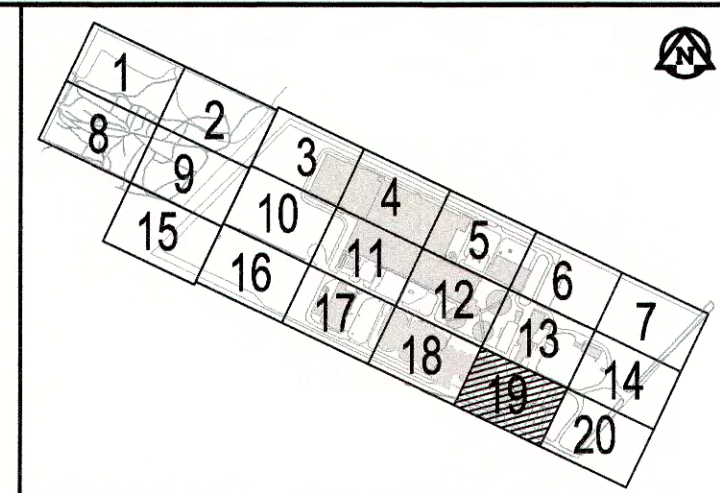
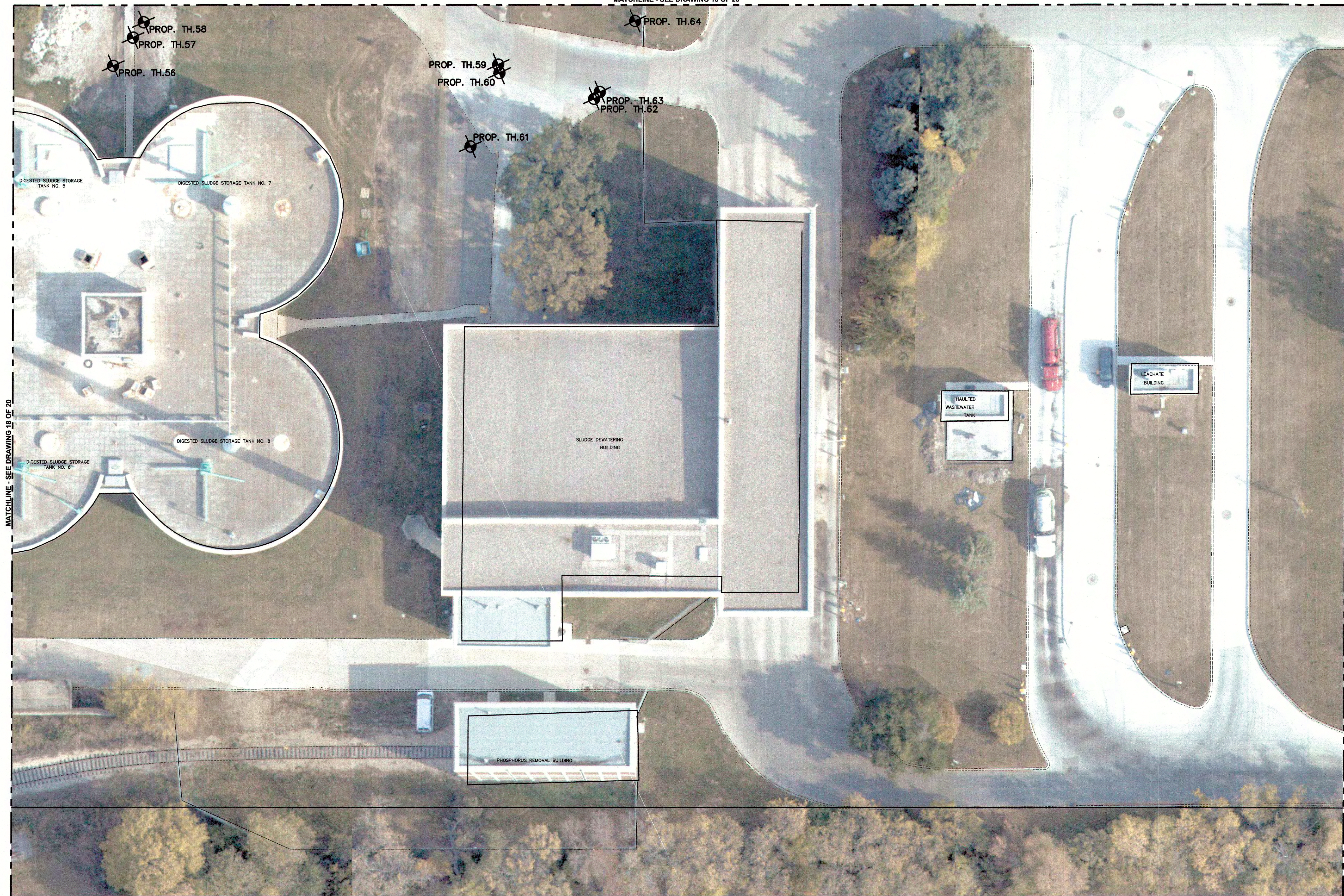


D SIZE 22" x 34" (560mm x 864mm)

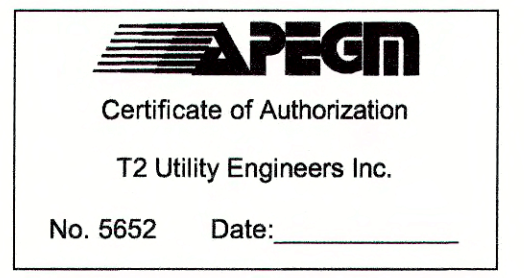
PLOT: 4/7/2014 4:56:28 PM

T:\2014\1768\000\1768\1010\CADD\98\_TRANSEER\INBOX\from\_T2\14.04.04\sewerfiles\_archive\61000277 - T2UE - UTIL - TH  
LOCATION\1010 - UTIL - TH LOCATIONS\RTLang\_Saved By: rezres@scd.ca

MATCHLINE - SEE DRAWING 13 OF 20



KEYMAP - N.T.S.



**U/G UTILITY LEGEND**

— GAS	— GAS
— G.S.	— GAS SERVICE
— WM	— WATER
— W.S.	— WATER SERVICE
— WWS	— WASTE WATER SEWER
— WWS LAT.	— WASTE WATER SEWER LATERAL
— LDS	— LAND DRAINAGE SEWER
— LDS LAT.	— LAND DRAINAGE SEWER LATERAL
— BE	— BURIED ELECTRIC
— BE-SL	— BURIED ELECTRIC STREET LIGHT
— GBD	— GROUND WIRE
— UNK	— UNKNOWN
— FOC	— FIBRE OPTIC CABLE
— TV	— CABLE TV
— BT	— BURIED TELECOMMUNICATIONS
— O/W	— OVERHEAD WIRE
—	— QUALITY LEVEL "B"
—	— QUALITY LEVEL "C"
—	— QUALITY LEVEL "D"

⊕	TEST HOLE (QL-A)
▶	CONTINUATION ARROW
→	FLOW ARROW
⌈	END CAP
·	NOT SURVEYED, LOCATION BASED ON FIELD OBSERVATION
■	NOT SURVEYED, LOCATION BASED ON RECORD INFORMATION

BID OPPORTUNITY NO. 206-2014

150 WM	WATERMAIN	150 WM	150 WM	CURB STOP	150 WM	WATERMAIN	150 WM
⊕	HYDRANT	⊕	+	REDUCER	⊕	HYDRANT	+
⊙	VALVE	⊙	×	COUPLING	⊙	VALVE	×
300 LDS	LAND DRAINAGE SEWER	300 LDS	300 LDS	ANODE	300 LDS	LAND DRAINAGE SEWER	300 LDS
250 WWS	WASTE WATER SEWER	250 WWS	250 WWS	LAMP STANDARD	250 WWS	WASTE WATER SEWER	250 WWS
○	MANHOLE	●	○	TREE	○	PAVEMENT CROWN	○
□	CATCH BASIN	■	⊕	HYDRO POLE	○	N/W PROPERTY LINE	○
△	CURB INLET	▲	⊕	BENCH MARK	○	S/E PROPERTY LINE	○
—	CULVERT	—	—		—	N/W GUTTER	—
—	PIPE ABANDONMENTS	—	—		—	S/E GUTTER	—
+	SURVEY BAR						
EXISTING	LEGEND - PLAN	NEW	EXISTING	LEGEND - PLAN	NEW	EXISTING	LEGEND - PROFILE

**LOCATION APPROVED**  
UNDERGROUND STRUCTURES

SUPR. U/G STRUCTURES DATE COMMITTEE

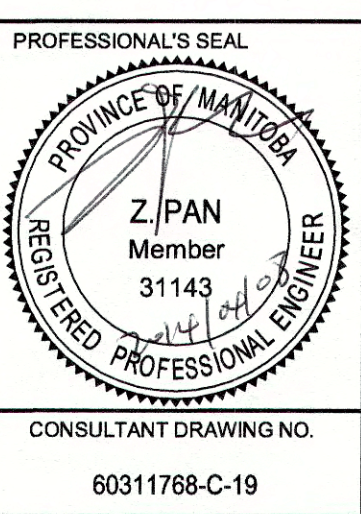
**NOTE:**  
LOCATION OF UNDERGROUND STRUCTURES AS SHOWN ARE BASED ON THE BEST INFORMATION AVAILABLE. BUT NO GUARANTEE IS GIVEN THAT ALL EXISTING UTILITIES ARE SHOWN OR THAT THE GIVEN LOCATIONS ARE EXACT. CONFIRMATION OF EXISTENCE AND EXACT LOCATION OF ALL SERVICES MUST BE OBTAINED FROM THE INDIVIDUAL UTILITIES BEFORE PROCEEDING WITH CONSTRUCTION.

NO.	REVISIONS	YYMMDD	BY
1	ISSUED FOR TENDER	14/04/08	J.C

**T2 utility engineers** **AECOM**

1-855-222-T2UE | WWW.T2UE.COM

DESIGNED BY	CHECKED BY	RG, JB
DRAWN BY	APPROVED BY	LEA
HOR. SCALE	1:250	
VERT. SCALE		
DATE	30-JAN-14	
DATE	08/04/2014	



**THE CITY OF WINNIPEG**  
WATER AND WASTE DEPARTMENT

**WINNIPEG NORTH END WATER POLLUTION CONTROL CENTRE**  
AREA SITE PLAN 19

SHEET 19 of 20  
CITY DRAWING NUMBER 1-101A-G0002-019