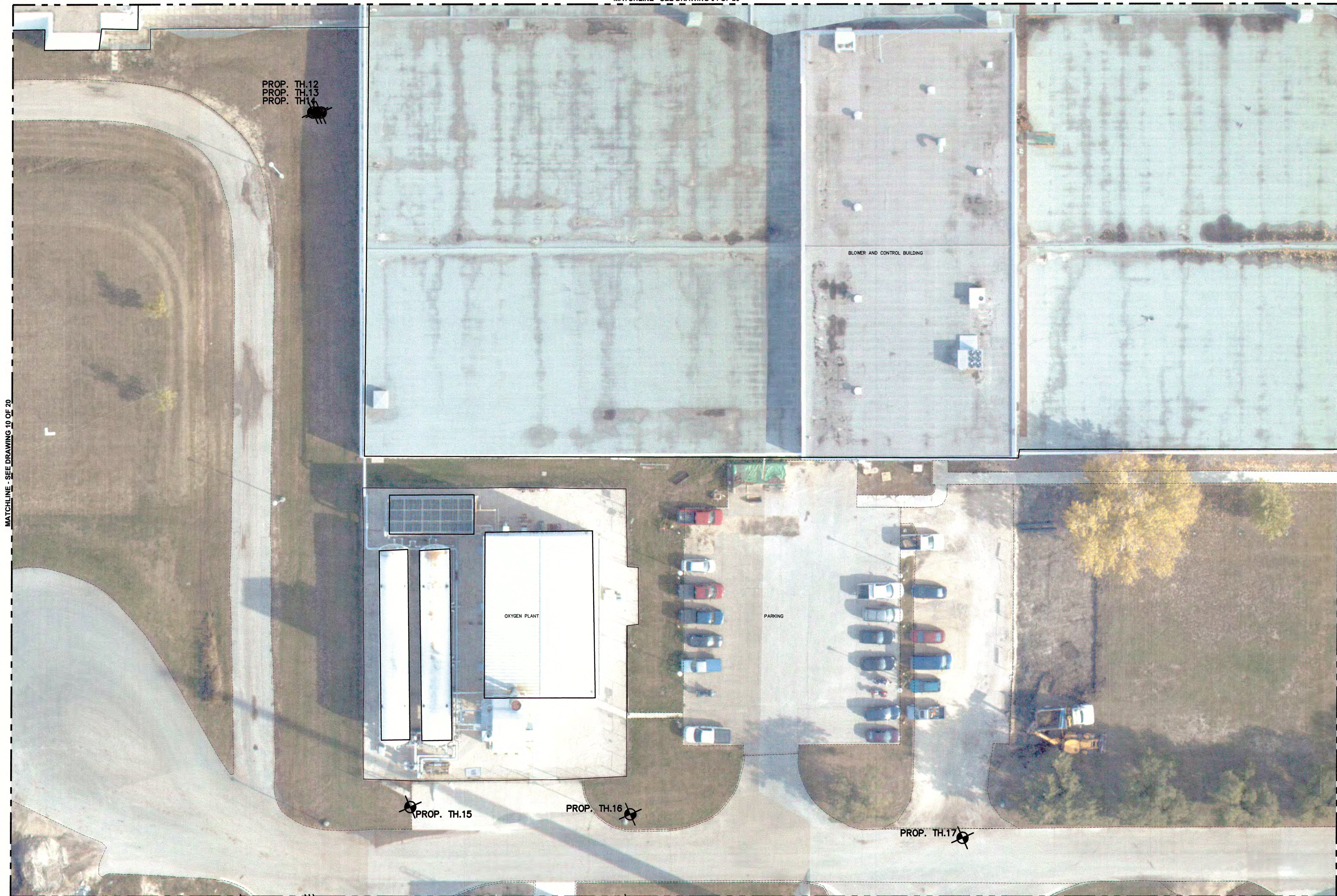


D SIZE 22" x 34" (559mm x 864mm)

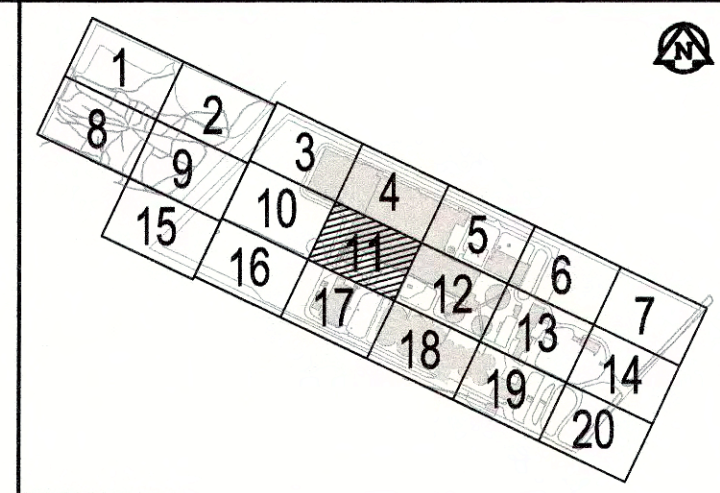
PLOT: 4/7/2014 5:10:21 PM

T2ue FILE NAME: P:\6031768\900\Work\19\CAD\08_TRANSEFER\INBOX\from T2 14.04.04\benefiles_archives\61000277 - T2UE - UTIL - TH
 TOBA\CONNS - Standards\100077 - UTIL - TH\LOCATIONS_R1.dwg Saved By: rezvescica

MATCHLINE - SEE DRAWING 04 OF 20



MATCHLINE - SEE DRAWING 17 OF 20



KEYMAP - N.T.S.
METRIC
 WHOLE NUMBERS INDICATE MILLIMETRES
 DECIMALIZED NUMBERS INDICATE METRES

APECM
 Certificate of Authorization
 T2 Utility Engineers Inc.
 No. 5652 Date: _____

UIG UTILITY LEGEND

— GAS	— GAS
— G.S.	— GAS SERVICE
— WM	— WATER
— W.S.	— WATER SERVICE
— WWS	— WASTE WATER SEWER
— WWS LAT.	— WASTE WATER SEWER LATERAL
— LDS	— LAND DRAINAGE SEWER
— LDS LAT.	— LAND DRAINAGE SEWER LATERAL
— BE	— BURIED ELECTRIC
— BE-SL	— BURIED ELECTRIC STREET LIGHT
— GRD	— GROUND WIRE
— UNK	— UNKNOWN
— FOC	— FIBRE OPTIC CABLE
— TV	— CABLE TV
— BT	— BURIED TELECOMMUNICATIONS
— o/h	— OVERHEAD WIRE
—	— QUALITY LEVEL "B"
—	— QUALITY LEVEL "C"
—	— QUALITY LEVEL "D"
—	— TEST HOLE (QL-A)
—	— CONTINUATION ARROW
—	— FLOW ARROW
—	— END CAP
—	— NOT SURVEYED, LOCATION BASED ON FIELD OBSERVATION
—	— NOT SURVEYED, LOCATION BASED ON RECORD INFORMATION

BID OPPORTUNITY NO. 206-2014

150 WM	WATERMAIN	150 WM	150 WM	CURB STOP	150 WM	WATERMAIN	150 WM	LOCATION APPROVED
○	HYDRANT	●	○	REDUCER	+	HYDRANT	+	UNDERGROUND STRUCTURES
○	VALVE	●	○	COUPLING	×	VALVE	×	
○	LAND DRAINAGE SEWER	○	○	ANODE	○	LAND DRAINAGE SEWER	○	SUPR. UIG STRUCTURES DATE COMMITTEE
○	WASTE WATER SEWER	○	○	LAMP STANDARD	○	WASTE WATER SEWER	○	NOTE:
○	MANHOLE	○	○	TREE	○	PAVEMENT CROWN	○	LOCATION OF UNDERGROUND STRUCTURES AS SHOWN ARE BASED ON THE BEST INFORMATION AVAILABLE. BUT NO GUARANTEE IS GIVEN THAT ALL EXISTING UTILITIES ARE SHOWN OR THAT THE GIVEN LOCATIONS ARE EXACT. CONFIRMATION OF EXISTENCE AND EXACT LOCATION OF ALL SERVICES MUST BE OBTAINED FROM THE INDIVIDUAL UTILITIES BEFORE PROCEEDING WITH CONSTRUCTION.
○	CATCH BASIN	○	○	HYDRO POLE	○	N/W PROPERTY LINE	○	
○	CURB INLET	○	○	BENCH MARK	○	S/E PROPERTY LINE	○	
○	CULVERT	○	○		○	N/W GUTTER	○	
○	PIPE ABANDONMENTS	○	○		○	S/E GUTTER	○	
○	SURVEY BAR	○	○		○		○	
○	EXISTING	○	○	LEGEND - PLAN	○	LEGEND - PROFILE	○	

1	ISSUED FOR TENDER	14/04/08	J.C
NO.	REVISIONS	YYMMDD	BY

DESIGNED BY	CHECKED BY	RG, JB
DRAWN BY	APPROVED BY	LEA
HOR. SCALE	1:250	
VERT. SCALE		
DATE	30-JAN-14	

T2 utility engineers
 1-855-222-T2UE | WWW.T2UE.COM

AECOM

PROFESSIONAL'S SEAL
 PROVINCE OF MANITOBA
 Z. PAN
 Member
 31143
 REGISTERED PROFESSIONAL ENGINEER

RELEASSED FOR CONSTRUCTION
 DATE 08/04/2014

CONSULTANT DRAWING NO.
 60311768-C-11

THE CITY OF WINNIPEG
WATER AND WASTE DEPARTMENT

WINNIPEG NORTH END WATER POLLUTION CONTROL CENTRE
 AREA SITE PLAN 11

SHEET 11 of 20
 CITY DRAWING NUMBER 1-1010A-G0002-011