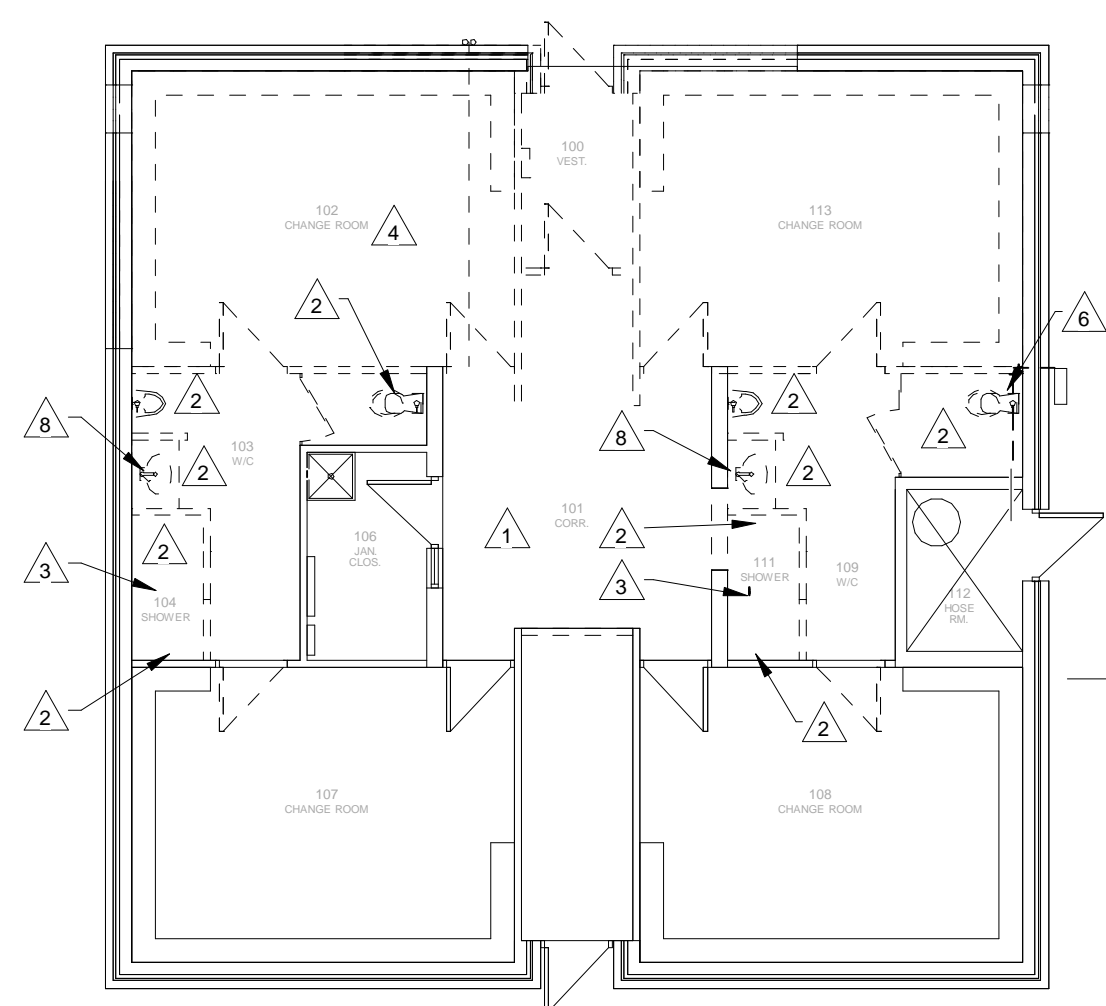


GENERAL NOTES

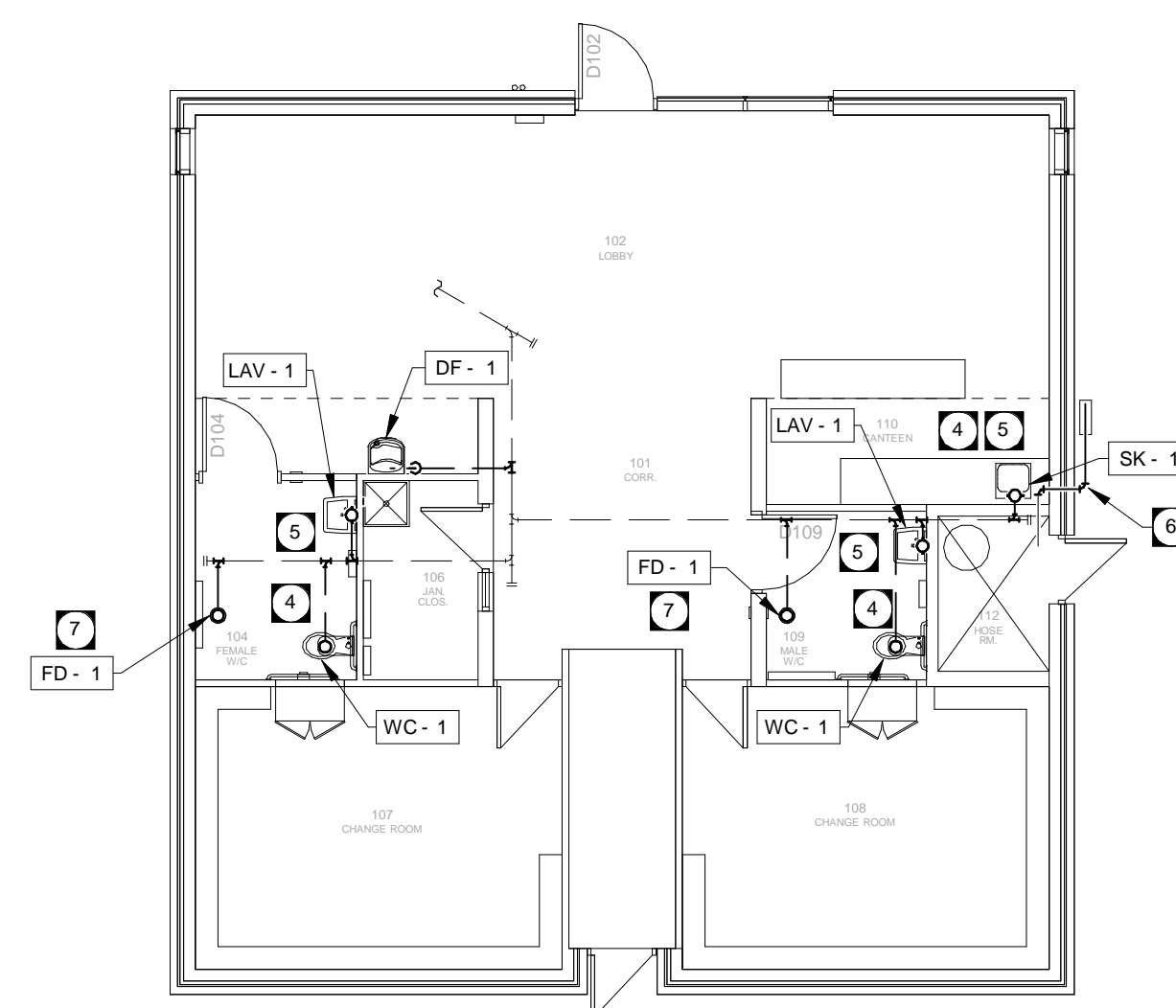
- FIRE STOP ALL PENETRATIONS THROUGH FIRE-RATED PARTITIONS AS PER SPECIFICATIONS. REFER TO ARCHITECTURAL FOR SEPARATION LOCATIONS AND RATINGS.
- THE LOCATION & ROUTING OF PIPING IS SCHEMATIC. RUN ALL DOMESTIC WATER LINES IN THE BLOCK WALLS WHERE ACCESSIBLE. THE EXACT ROUTING SHALL BE COORDINATED BETWEEN TRADES ON SITE. EXPOSED PIPING TO BE KEPT TO A MINIMUM AND GUARDED WITH METAL WIRE OR MESH COVERS. EXPOSED PIPING LOCATIONS SHALL BE SUBJECT TO FINAL APPROVAL BY THE CONTRACT ADMINISTRATOR. PROVIDE VENTS WHERE REQUIRED BY MANITOBA PLUMBING CODE.
- WATER HAMMER ARRESTORS SHALL BE INSTALLED IN EACH WASHROOM AND FIXTURE GROUP.
- ALL NEW AND EXISTING PIPING SHALL BE INSULATED AS PER THE SPECIFICATION. REVIEW CONDITIONS ON SITE TO CONFIRM INSULATION QUANTITY.
- ALL CORING FOR MECHANICAL SERVICES BY THE MECHANICAL DIVISION.
- INSTALL EACH WASHROOM FIXTURE GROUP WITH A SINGLE SHUT-OFF VALVE. LOCATE THE VALVE IN A SERVICEABLE LOCATION. LOCATE IN SECURE AND ACCESSIBLE SPACE, EITHER ABOVE CEILING OR IN SERVICE ROOMS. PROVIDE MARKING INDICATING THE VALVE'S SERVICE.
- REFER TO ARCHITECTURAL PLANS AND ELEVATIONS FOR EXACT LOCATION OF PLUMBING FIXTURES
- THE INTERRUPTION OF ANY SERVICES SHALL BE COORDINATED WITH THE CITY OF WINNIPEG AND SHALL BE KEPT TO A MINIMUM.
- THE FLOOR IS A STRUCTURAL SLAB. MECHANICAL CONTRACTOR TO HAVE ALL FLOOR PENETRATIONS APPROVED BY THE STRUCTURAL ENGINEER AND COORDINATED THROUGH THE GENERAL CONTRACTOR.
- EXISTING DRAINAGE LINE ROUTING AS SHOWN IS BASED ON AVAILABLE DRAWINGS. CONTRACTOR TO SCOPE THE LINE TO DETERMINE CONDITION OF THE PIPING AND ROUTING OF EXISTING AND NEW DRAINAGE BEFORE PROCEEDING WITH THE WORK.

KEY NOTES

- 1 LOCATIONS OF EXISTING DRAINAGE PIPING ROUTING LOCATED IN STRUCTURAL SLAB IS BASED ON EXISTING DRAWINGS. PRIOR TO START OF ANY WORK, SCOPE THE DRAINAGE PIPE TO CONFIRM ROUTING AND CONDITION OF THE SANITARY PIPE. REPORT CONDITION AND ROUTING BACK TO CONTRACT ADMINISTRATOR.
- 2 DEMOLISH WASHROOM FIXTURES. REMOVE SUPPLY PIPES BACK TO DOMESTIC WATER SUPPLY MAIN. TERMINATE WITH CAPPED ISOLATION VALVE FOR POTENTIAL REUSE. DRAINAGE PIPE TO BE REMOVED TO FLOOR LEVEL AND CAPPED. REFER TO INDIVIDUAL NOTES FOR FURTHER INFORMATION.
- 3 DEMOLISH SHOWER DRAIN. DRAIN PIPING TO BE REUSED FOR FLOOR DRAIN.
- 4 EXISTING SANITARY MAIN AND BRANCHES TO REMAIN. CAP ALL DISCONNECTED BRANCH PIPES JUST BELOW THE SLAB LEVEL. COORDINATE REQUIRED SLAB OPENINGS WITH GENERAL CONTRACTOR AS SLAB IS STRUCTURAL AND CAN ONLY BE MODIFIED WITH STRUCTURAL CONSULTANT APPROVAL.
- 5 DOMESTIC WATER SUPPLY FOR WASHROOM GROUP LOCATED IN CEILING SPACE ABOVE. TIE INTO EXISTING MAIN. CONNECT LAVATORIES TO EXISTING TEMPERED WATER DISTRIBUTION. WHERE ACCESSIBLE, RUN DOMESTIC WATER LINES IN BLOCK WALLS. IF EXPOSED, CO-ORDINATE LOCATIONS WITH CONTRACT ADMINISTRATOR.
- 6 RELOCATE EXISTING NATURAL GAS LINE. PROVIDE MOUNTING BRACKETS AT 12-SPACINGS ON EXTERIOR. TIE INTO EXISTING LINE INSIDE MILLWORK.
- 7 USE EXISTING SHOWER DRAIN PIPING FOR NEW FLOOR DRAIN. REFER TO GENERAL NOTES REGARDING STRUCTURAL SLAB.
- 8 SALVAGE AND TURN LAVATORY AND METERING WATER FAUCET OVER TO OWNER.



1 MAIN FLOOR PLAN - PLUMBING DEMOLITION
M1.1 SCALE: 1/8" = 1'-0"



2 MAIN FLOOR PLAN - PLUMBING RENOVATION
M1.1 SCALE: 1/8" = 1'-0"

FIXTURE SCHEDULE

MARK	PIPE SIZES			
	DCW	DHW	SANITARY	VENT
LAV-1	1/2"	1/2"	1 1/4"	1 1/4"
WC-1	1"	-	3"	-
SK-1	1/2"	1/2"	1 1/2"	1 1/4"
DF-1	1/2"	-	1 1/4"	1 1/4"
FD-1	-	-	3"	-

* FOLLOW PIPE SIZES GIVEN IN ABOVE CHART UNLESS DRAWING SHOWS DIFFERENTLY.

PLUMBING LINE TYPE

---	DOMESTIC COLD WATER
---	DOMESTIC HOT WATER RECIRCULATION LINE
---	DOMESTIC HOT WATER
---	RAIN WATER LEADER
---	SANITARY WASTE ABOVE FLOOR OR GRADE
---	SANITARY WASTE BELOW FLOOR OR GRADE
---	INDIRECT WASTE
---	PUMPED CONDENSATE
---	CONDENSATE LINE

PLUMBING SYMBOLS

	FLOOR DRAIN
	ROOF DRAIN
	PIPE RISE
	PIPE DROP
	TRAP
	CLEAN OUT
	HOSE BIBB
	UNION
	FLANGE
	SHUT-OFF VALVE
	CHECK VALVE
	PUMP
	FIXTURE TAG
	EQUIPMENT TAG
	KEY NOTE
	DEMOLITION NOTE
	DRAWING HEADER
	WATER METER

1 14.03.14 ISSUED FOR CONSTRUCTION
No. DATE REVISION / ISSUANCE

Seal



Architect

x architecture inc.
120 Fort Street, Suite 103 Winnipeg, Manitoba R3C 1C7 204.319.2010

Engineer

epp siepman engineering inc.
mechanical & electrical engineers
303-100 Osborne St. South Winnipeg, MB R3L 1Y5 p 204-453-1080 f 204-453-1335 ese@eppsiepman.com

Project
BID OPPORTUNITY 180-2014
CLARA HUGHES PARK
FACILITY REDEVELOPMENT
281 Henderson Highway

Sheet Title
**MAIN FLOOR PLUMBING -
DEMOLITION & RENOVATION**

Project No. 1327
Date MARCH 14, 2014
Sheet
M1.1