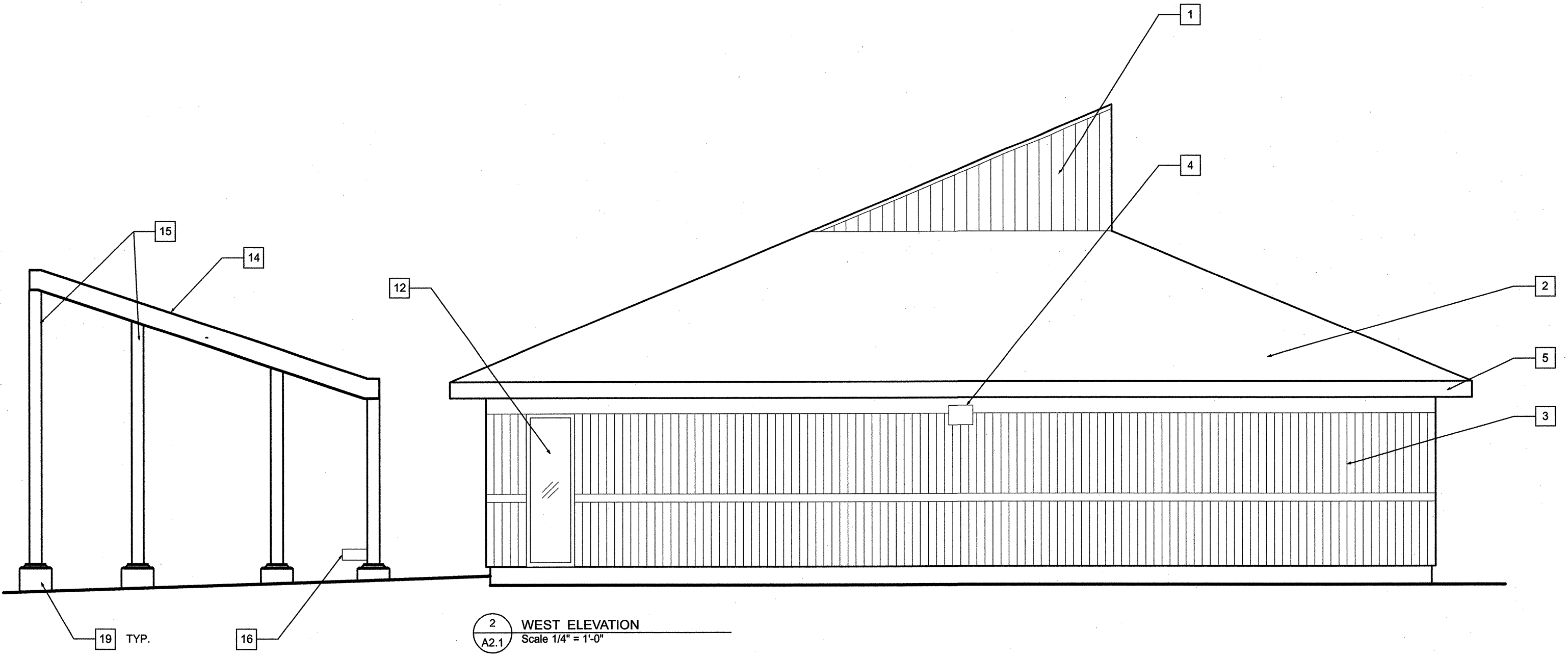
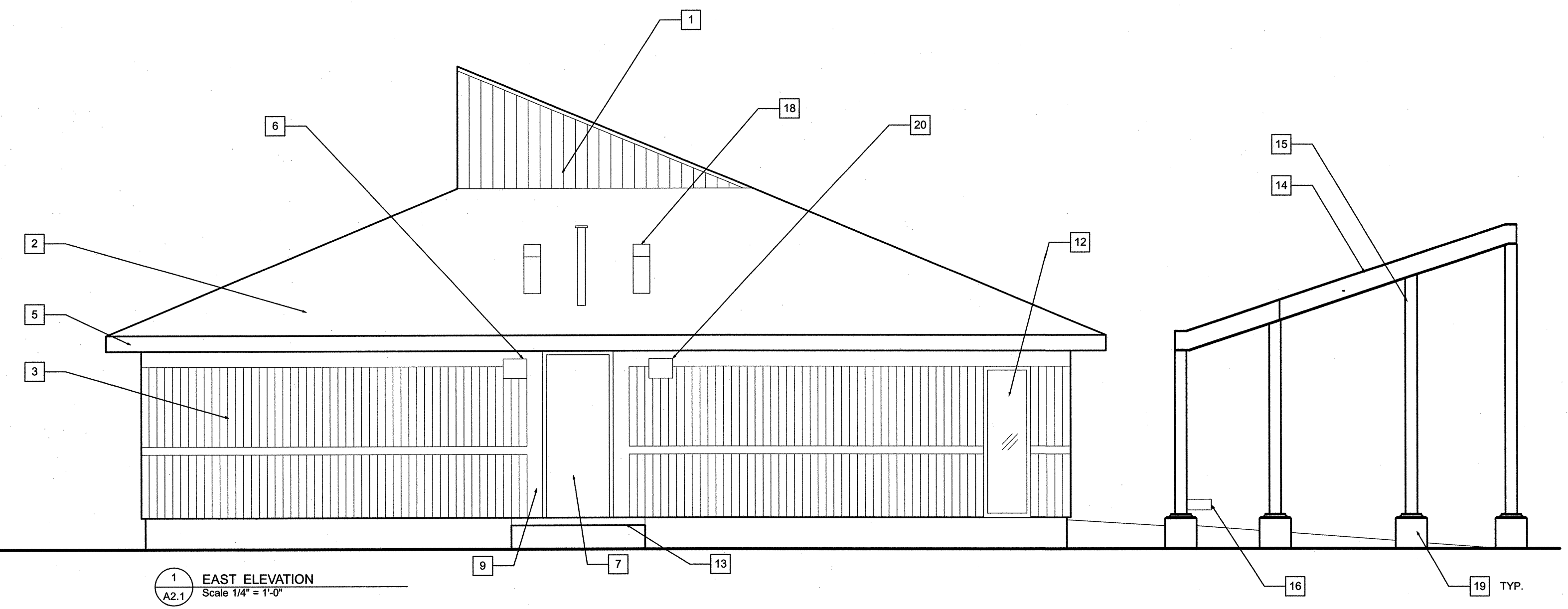


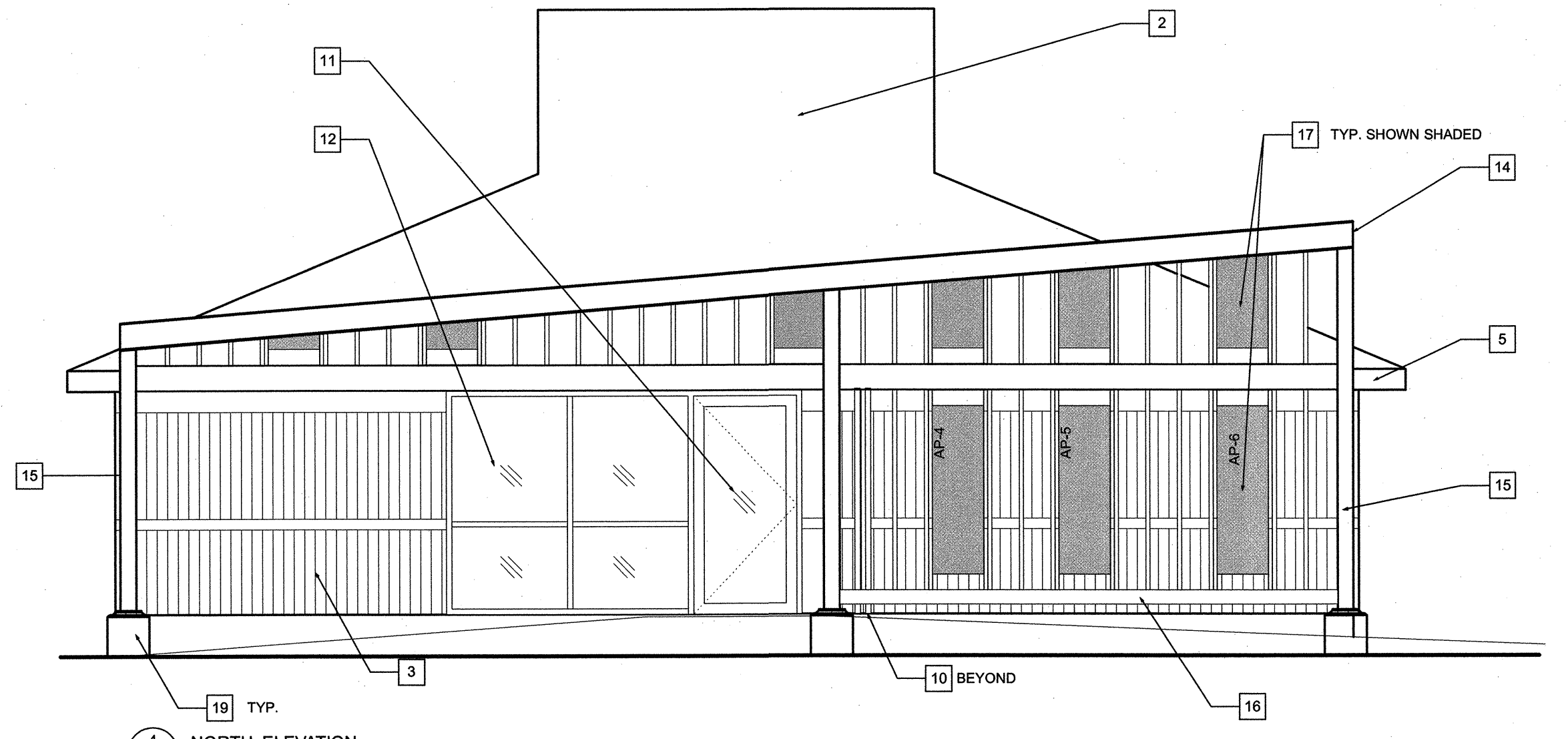
3 SOUTH ELEVATION
A2.1 Scale 1/4" = 1'-0"



2 WEST ELEVATION
A2.1 Scale 1/4" = 1'-0"



1 EAST ELEVATION
A2.1 Scale 1/4" = 1'-0"



4 NORTH ELEVATION
A2.1 Scale 1/4" = 1'-0"

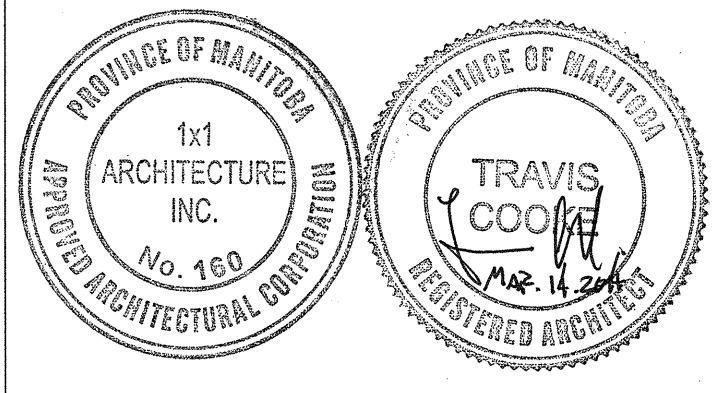
KEYNOTES

- | | |
|--|--|
| 1 EXISTING CEDAR SIDING TO REMAIN | 11 NEW GLAZED ALUMINUM DOOR C/W POWER DOOR OPERATOR - REFER TO SPEC. |
| 2 EXISTING ROOFING TO REMAIN | 12 NEW CURTAINWALL GLAZING. REFER TO DETAILS AND SPEC. |
| 3 EXISTING SPLIT CONCRETE BLOCK TO REMAIN | 13 EXISTING CONCRETE CURB TO REMAIN |
| 4 EXISTING LIGHT FIXTURE TO REMAIN | 14 GALV. STEEL BEAM - REFER TO STRUCT. AND DETAILS ON A3.1 |
| 5 EXISTING METAL FASCIA TO REMAIN | 15 GALV. STEEL COLUMN - REFER TO STRUCT. AND DETAILS ON A3.1 |
| 6 EXISTING METAL LOUVRE TO REMAIN | 16 WOOD BENCH - REFER TO STRUCT. AND DETAILS ON A3.1 |
| 7 EXISTING METAL DOOR TO REMAIN. PREPARE AND PROVIDE NEW PAINT ON DOOR AND FRAME | 17 POWDER COATED 1/4" THICK ALUMINUM PLATE - REFER TO SPEC. AND DETAIL ON A3.1 |
| 8 EXISTING WINDOW C/W METAL SCREEN TO REMAIN | 18 EXIST. MECH ROOFTOP EQUIPMENT TO REMAIN - REFER TO MECH |
| 9 EXISTING PAINTED CONCRETE BLOCK TO REMAIN | 19 C.I.P. CONC. PILES - REFER TO STRUCT. AND DETAILS |
| 10 EXISTING ELECTRICAL SERVICE FEEDER TO REMAIN - REFER TO ELECT. | 20 NEW LIGHT FIXTURE - REFER TO ELECT. |

- PANEL COLOR SCHEDULE**
 AP-1 - COLOR 1 - COPPER
 AP-2 - COLOR 1 - COPPER
 AP-3 - COLOR 1 - COPPER
 AP-4 - COLOR 3 - GOLD
 AP-5 - COLOR 2 - SILVER
 AP-6 - COLOR 1 - COPPER
- REFER TO SPEC. FOR ALUMINUM PLATE AND PAINT FINISH INFORMATION

5	YY.MM.DD	-
4	YY.MM.DD	-
3	YY.MM.DD	-
2	YY.MM.DD	-
1	2014.02.14	ISSUED FOR CONSTRUCTION

No. DATE REVISION / ISSUANCE



x | architecture inc.
 120 Fort Street, Suite 103 Winnipeg, Manitoba R3C 1C7 204.318.2010

Project: BID OPPORTUNITY 180 - 2014
CLARA HUGHES PARK FACILITY REDEVELOPMENT
 281 HENDERSON HIGHWAY

ELEVATIONS

Project No.	1251	Sheet	A2.1
Date	MARCH 14, 2014		