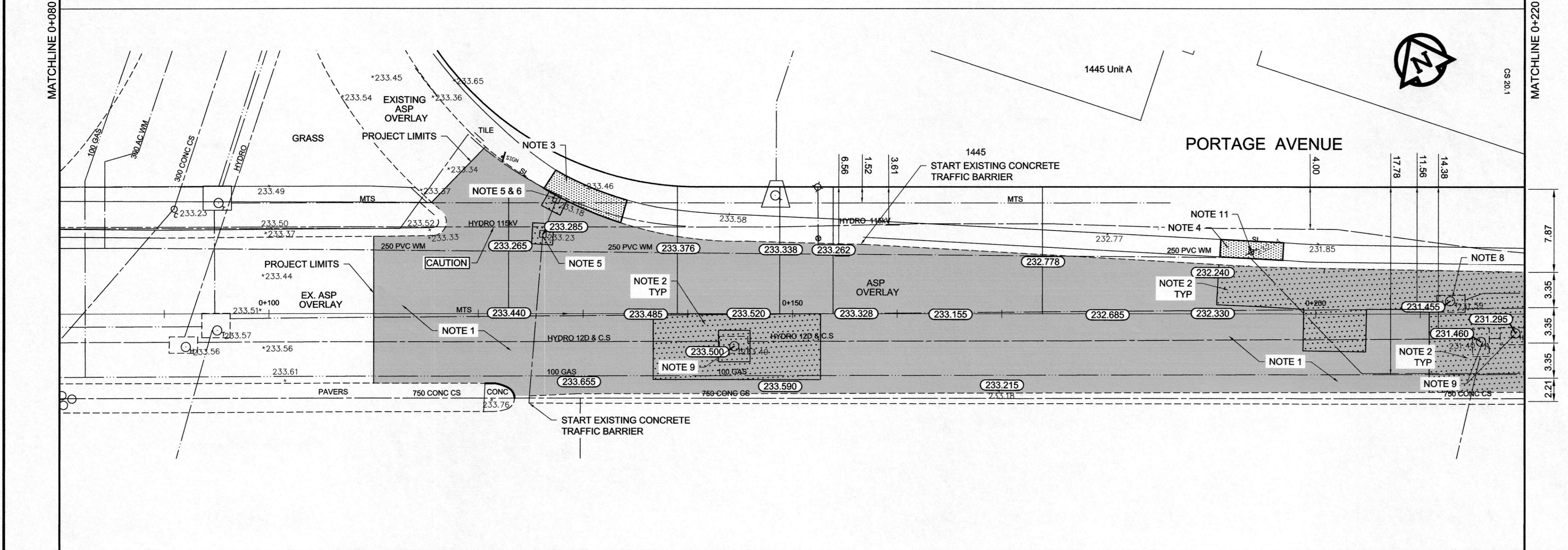


- REFERENCE NOTES**
- PAVEMENT DIMENSIONS ARE TO BACK OF CURB
 - BASELINE IS 6.7M SOUTH OF NORTH GUTTER
 - PROPERTY LINES OBTAINED FROM THE CITY OF WINNIPEG L.B.I.S., AND NO SCALE FACTOR WAS APPLIED
 - REFER TO AECOM FIELD BOOK NO. 4821,4822 & 4823



- CONSTRUCTION NOTES:**
- PLANE EXISTING ASPHALT AND CONSTRUCT NEW ASPHALTIC PAVEMENT OVERLAY TYPE 1A (AVERAGE THICKNESS 85mm)
 - REMOVE EXISTING PAVEMENT AND CONSTRUCT NEW 200mm REINFORCED CONCRETE PAVEMENT c/w 85mm TYPE 1A ASPHALT OVERLAY
 - RENEW MONOLITHIC CURB (100mm AVG. HT. REVEAL) AND 100mm SIDEWALK
 - RENEW 100mm SIDEWALK
 - ADJUST EXISTING CATCH BASIN/MANHOLE TO GRADE
 - REMOVE EXISTING FRAME AND COVER AND PLACE NEW FRAME AND COVER (AP-004 AND AP-005)
 - INSTALL NEW CAST IRON RISER RING
 - ADJUST MTS MANHOLE FRAME AND COVER c/w 50mm CAST IRON RISER RING
 - ADJUST EXISTING HYDRO MANHOLE (BY OTHERS)
 - ADJUST EXISTING CURB STOP TO GRADE
 - ADJUST EXISTING VALVE BOX

METRIC
WHOLE NUMBERS INDICATE MILLIMETRES
DECIMAL NUMBERS INDICATE METRES



EXISTING	LEGEND - PLAN	PROPOSED	EXISTING	LEGEND - PLAN	PROPOSED	EXISTING	LEGEND - PROFILE	PROPOSED
150mm W.M.	WATERMAIN	150mm W.M.	HYDRO	HYDRO	HYDRO	---	C PROFILE	---
300mm L.D.S.	LAND DRAINAGE SEWER	300mm L.D.S.	M.T.S.	M.T.S.	M.T.S.	---	NORTHWEST GUTTER	---
250mm W.W.S.	WASTEWATER SEWER	250mm W.W.S.	CONCRETE	CONCRETE	CONCRETE	---	MEDIAN GUTTER	---
○	MANHOLE	○	ASPHALT	ASPHALT	ASPHALT	---	N/W PROPERTY LINE	---
□	CATCH BASIN	□	PROPERTY LINE	PROPERTY LINE	PROPERTY LINE	---	S/E PROPERTY LINE	---
▽	CURB INLET	▽	SURVEY BAR	SURVEY BAR	SURVEY BAR	---		
+	JUNCTIONS	+	ELEVATION	ELEVATION	ELEVATION	---		
—	CULVERT	—	TREE	TREE	TREE	---		
—	GAS	—	SIDEWALK RAMP	SIDEWALK RAMP	SIDEWALK RAMP	---		
---		---	CONCRETE SIDEWALK	CONCRETE SIDEWALK	CONCRETE SIDEWALK	---		
---		---	FENCE	FENCE	FENCE	---		

LOCATION APPROVED UNDERGROUND STRUCTURES

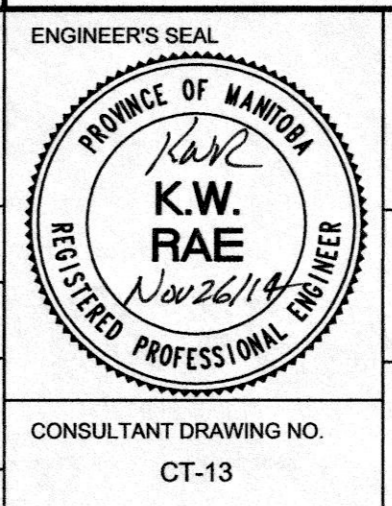
SUPV. U/G STRUCTURES COMMITTEE DATE

NOTE:
LOCATION OF UNDERGROUND STRUCTURES AS SHOWN ARE BASED ON THE BEST INFORMATION AVAILABLE, BUT NO GUARANTEE IS GIVEN THAT ALL EXISTING UTILITIES ARE SHOWN OR THAT THE GIVEN LOCATIONS ARE EXACT. CONFIRMATION OF EXISTENCE AND EXACT LOCATION OF ALL SERVICES MUST BE OBTAINED FROM THE INDIVIDUAL UTILITIES BEFORE PROCEEDING WITH CONSTRUCTION.

B.M. 89R581	S.W. corner Portage Ave. & Sprague St. Tbt. on pipe.
ELEV. 232.540	4.8m E. of W.L. Sprague St. produced from the W. along the S.L. of Portage Ave.

AECOM

DESIGNED BY	BC	CHECKED BY	KWR
DRAWN BY	RT, PB	APPROVED BY	
HOR. SCALE:	1:250	RELEASED FOR CONSTRUCTION BY:	
VERTICAL:	1:10	DATE	Nov 26/14
ISSUED FOR TENDER	11/27/2014	DATE	2014/06/26



THE CITY OF WINNIPEG
PUBLIC WORKS DEPARTMENT
ENGINEERING DIVISION

PORTAGE AVENUE REHABILITATION:
PART A- EASTBOUND FROM SHERBURN ST. TO MARYLAND ST.
PART B- WESTBOUND FROM EMPRESS ST. TO MINTO ST.

PLAN / PROFILE PART B
STATION 0+110 TO STATION 0+220

CITY DRAWING NUMBER: P-3356-02
SHEET 13 OF 21

CONSULTANT DRAWING NO. CT-13