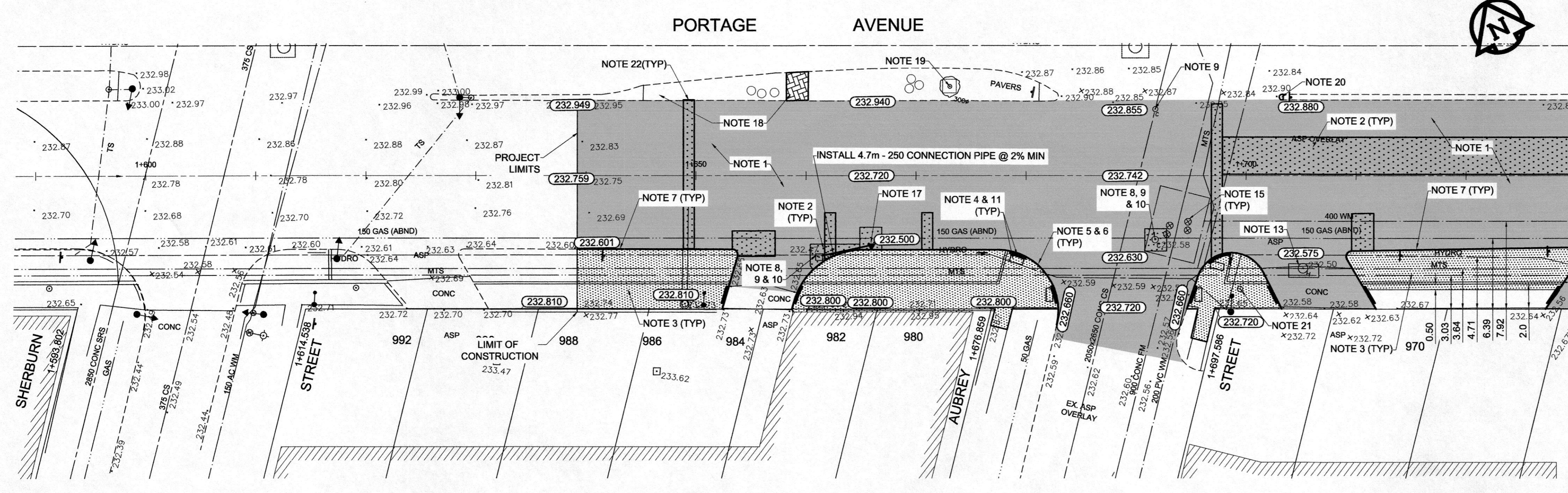


- REFERENCE NOTES**
- PAVEMENT DIMENSIONS ARE TO BACK OF CURB
 - BASELINE IS 12.0M NORTH OF SOUTH PROPERTY LINE
 - PROPERTY LINES OBTAINED FROM THE CITY OF WINNIPEG L.B.I.S., AND NO SCALE FACTOR WAS APPLIED
 - REFER TO AECOM FIELD BOOK NO. 4821, 4822 & 4823

- CONSTRUCTION NOTES:**
- PLANE EXISTING ASPHALT AND CONSTRUCT NEW ASPHALTIC PAVEMENT OVERLAY TYPE 1A (AVERAGE THICKNESS 85mm)
 - REMOVE EXISTING PAVEMENT AND CONSTRUCT NEW 200mm REINFORCED CONCRETE PAVEMENT c/w 85mm TYPE 1A ASPHALTIC OVERLAY
 - REMOVE EXISTING CONCRETE SIDEWALK AND CONSTRUCT NEW 100mm SIDEWALK c/w PAVING STONE BAND (SEE DETAIL 1)
 - RENEW EXISTING MONOLITHIC CURB RAMP (10mm HT. INTEGRAL)
 - CONSTRUCT NEW MODIFIED BARRIER CURB (150mm AVG. HT. REVEAL SEPARATE)
 - REMOVE EXISTING BARRIER CURB
 - RENEW EXISTING BARRIER CURB (100mm AVG. HT. REVEAL)
 - ADJUST EXISTING CATCH BASIN/MANHOLE TO GRADE
 - REMOVE EXISTING FRAME AND COVER AND PLACE NEW FRAME AND COVER (AP-004 AND AP-005)
 - INSTALL NEW CAST IRON RISER RING
 - INSTALL NEW DETECTABLE SURFACE WARNING TILES
 - ADJUST MTS MANHOLE FRAME AND COVER
 - ADJUST EXISTING MTS MANHOLE FRAME AND COVER
 - ADJUST EXISTING CURB STOP TO GRADE
 - INSTALL VALVE BOX EXTENSION
 - REMOVE EXISTING CATCHBASIN AND CURB INLET
 - INSTALL NEW CURB AND GUTTER INLET c/w CATCHPIT (SD-023) AND CONNECT TO EXISTING CATCHBASIN
 - REGRADE EXISTING PAVING STONES
 - REMOVE TREE STUMP BY OTHERS
 - RENEW BULLNOSE
 - ADJUST SIGNAL SERVICE BOX
 - REGRADE 0.5m WITH PAVING STONES



FOR WORKS IN CLOSE PROXIMITY TO 900 FM AND 400 WATERMAIN, MEET ALL REQUIREMENTS AS OUTLINED IN E17.

EXISTING	LEGEND - PLAN	PROPOSED	EXISTING	LEGEND - PLAN	PROPOSED	EXISTING	LEGEND - PROFILE	PROPOSED
150 mm W.M.	WATERMAIN	150 mm W.M.	HYDRO	HYDRO	HYDRO	---	C PROFILE	---
⊕	HYDRANT	⊕	M.T.S.	M.T.S.	M.T.S.	---	SOUTH/EAST GUTTER	---
⊙	VALVE	⊙	CONCRETE	CONCRETE	CONCRETE	---	MEDIAN GUTTER	---
300mm L.D.S.	LAND DRAINAGE SEWER	300mm L.D.S.	ASPHALT	ASPHALT	ASPHALT	---	N/W PROPERTY LINE	---
250mm W.W.S.	WASTEWATER SEWER	250mm W.W.S.	PROPERTY LINE	PROPERTY LINE	PROPERTY LINE	---	S/E PROPERTY LINE	---
○	MANHOLE	○	SURVEY BAR	SURVEY BAR	SURVEY BAR	---		
□	CATCH BASIN	□	ELEVATION	ELEVATION	ELEVATION	---		
▽	CURB INLET	▽	TREE	TREE	TREE	---		
▨	BUILDING OUTLINE	▨	SIDEWALK RAMP	SIDEWALK RAMP	SIDEWALK RAMP	---		
▭	CULVERT	▭	CONCRETE SIDEWALK	CONCRETE SIDEWALK	CONCRETE SIDEWALK	---		
---	GAS	---	FENCE	FENCE	FENCE	---		

LOCATION APPROVED UNDERGROUND STRUCTURES

SUPV. U/G STRUCTURES COMMITTEE DATE

NOTE:
LOCATION OF UNDERGROUND STRUCTURES AS SHOWN ARE BASED ON THE BEST INFORMATION AVAILABLE. BUT NO GUARANTEE IS GIVEN THAT ALL EXISTING UTILITIES ARE SHOWN OR THAT THE GIVEN LOCATIONS ARE EXACT. CONFIRMATION OF EXISTENCE AND EXACT LOCATION OF ALL SERVICES MUST BE OBTAINED FROM THE INDIVIDUAL UTILITIES BEFORE PROCEEDING WITH CONSTRUCTION.

NO.	REVISIONS	DATE	BY
0	ISSUED FOR TENDER	11/27/2014	KWR

AECOM

DESIGNED BY: BC
CHECKED BY: KWR

DRAWN BY: RT, PB
APPROVED BY:

HOR. SCALE: 1:250
VERTICAL: 1:10

RELEASER FOR CONSTRUCTION BY:

DATE: 2014/06/26
DATE: 10/20/14

ENGINEER'S SEAL

PROVINCE OF MANITOBA

K.W. RAE

REGISTERED PROFESSIONAL ENGINEER

CONSULTANT DRAWING NO. CT-03

METRIC

WHOLE NUMBERS INDICATE MILLIMETRES
DECIMALIZED NUMBERS INDICATE METRES

THE CITY OF WINNIPEG

PUBLIC WORKS DEPARTMENT
ENGINEERING DIVISION

PORTAGE AVENUE REHABILITATION:
PART A- EASTBOUND FROM SHERBURN ST. TO MARYLAND ST.
PART B- WESTBOUND FROM EMPRESS ST. TO MINTO ST.

PLANNING / PROFILE PART A
STATION 1+639 TO STATION 1+730

CITY DRAWING NUMBER P-3359-03
SHEET 3 OF 21