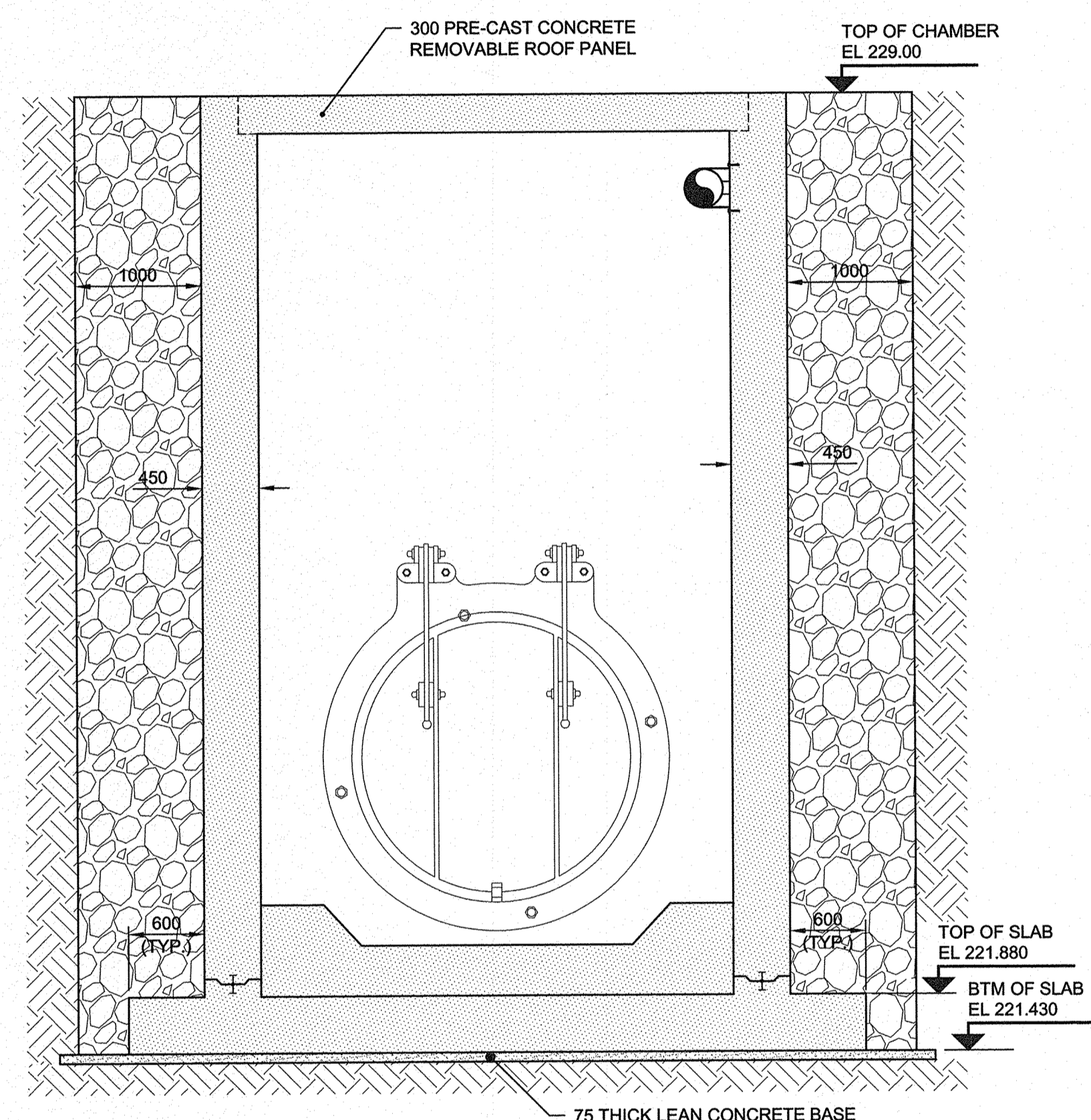
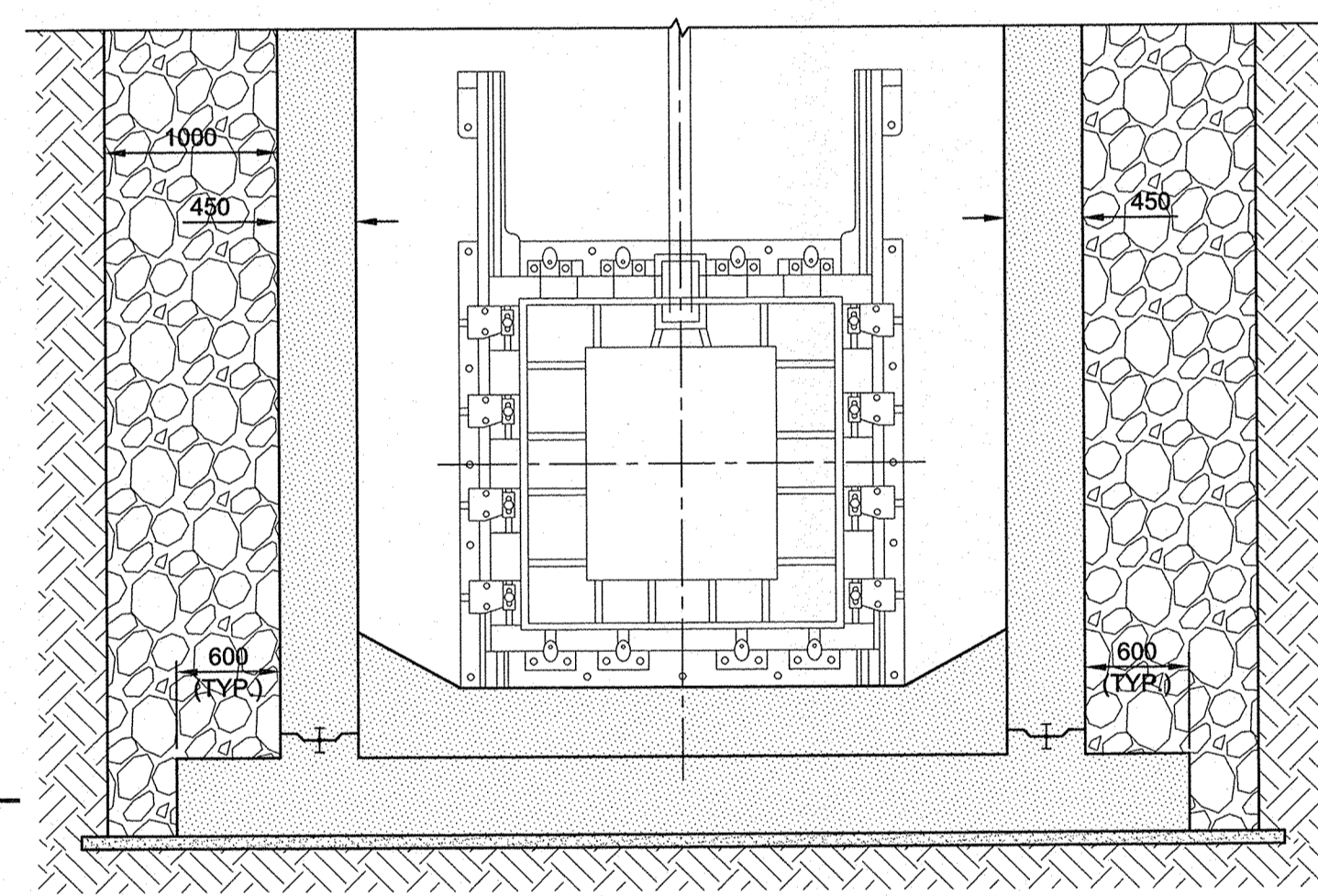


A SECTION
 LD-7420
 0 1000 2000 mm
 1:40



B SECTION
 0 1000 2000 mm
 1:40



C SECTION
 0 1000 2000 mm
 1:40

36x140 KEY C/W 150 PVC WATERSTOP
 TYPICAL AT ALL KEY LOCATIONS

METRIC
 WHOLE NUMBERS INDICATE MILLIMETRES
 DECIMALIZED NUMBERS INDICATE METRES

APEGM
 Certificate of Authorization
 AECOM Canada Ltd.
 No. 4671 Date: 2/14/13

BID OPPORTUNITY NO. 1062-2014

| LOCATION APPROVED | | UNDERGROUND STRUCTURES | |
|---|------|------------------------|--|
| SUPR. U/G STRUCTURES | DATE | COMMITTEE | |
| | | | |
| NOTE: LOCATION OF UNDERGROUND STRUCTURES AS SHOWN ARE BASED ON THE BEST INFORMATION AVAILABLE. BUT NO GUARANTEE IS GIVEN THAT ALL EXISTING UTILITIES ARE SHOWN OR THAT THE GIVEN LOCATIONS ARE EXACT. CONFIRMATION OF EXISTENCE AND EXACT LOCATION OF ALL SERVICES MUST BE OBTAINED FROM THE INDIVIDUAL UTILITIES BEFORE PROCEEDING WITH CONSTRUCTION. | | | |

| NO. | REVISIONS | DATE | BY |
|-----|-------------------|----------|-----|
| 0 | ISSUED FOR TENDER | 14/11/12 | Wjd |
| | | | |

| | |
|----------------------|---------------------------|
| AECOM | |
| DESIGNED BY: JAT | CHECKED BY: EOT |
| DRAWN BY: ADL | APPROVED BY: CCW |
| HOR. SCALE: AS NOTED | RELEASED FOR CONSTRUCTION |
| VERT. SCALE: N/A | |
| DATE: | DATE: |

PROFESSIONAL'S SEAL
 PROVINCE OF MANITOBA
 REGISTERED PROFESSIONAL ENGINEER
 S.P. BISWANGER
 2014/11/13
 CONSULTANT DRAWING NO.
 60219315-SHT-00-CON4-S-3002

THE CITY OF WINNIPEG
 WATER AND WASTE DEPARTMENT

JEFFERSON EAST
 COMBINED SEWER RELIEF
 CONTRACT 4 - SEMPLE OUTFALL

GATE CHAMBER
 STRUCTURAL SECTIONS

SHEET 05 OF 07
 CITY DRAWING NUMBER
LD-7421
 REV 0