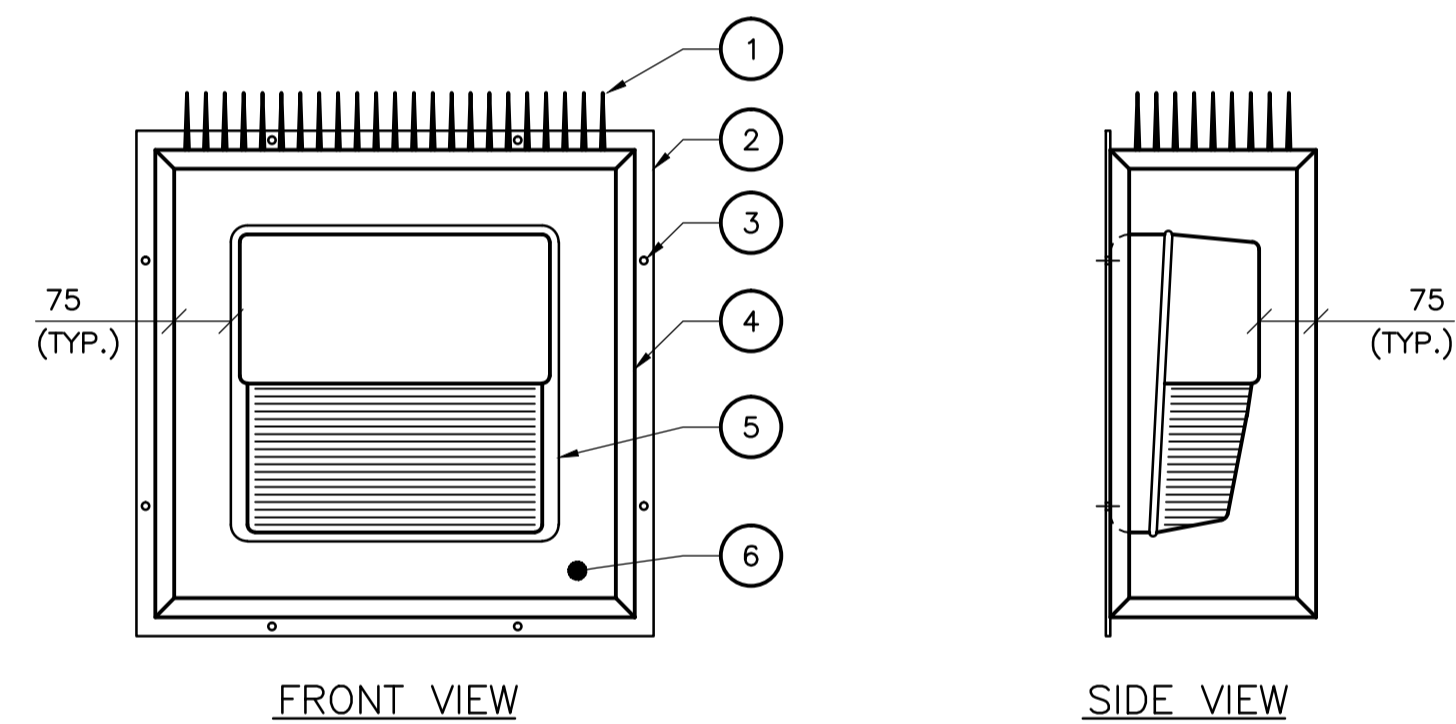


1 TYPICAL PIER ELEVATION
 1 : 75
 - EXIST SUPERSTRUCTURE NOT SHOWN



LUMINAIRE SCHEDULE					
TYPE	MANUFACTURER	CATALOGUE NO.	VOLTAGE	LAMPS	DESCRIPTION/MOUNTING INSTRUCTIONS
A	LITHONIA OR KEENE	TWP-100M-120-CSA-LPI CWM100MAL-T C/W CUSTOM WIREGUARD TO FIT OVER COMPLETE FIXTURE	120V/1Ø	1-100W MH	WALL MOUNTED LUMINAIRE. MOUNT UNIT TO CONCRETE STRUCTURE. INSTALLED IN VANDAL COVER - REFER TO DETAIL 2 ON THIS SHEET. SUPPLIED, INSTALLED, WIRED, AND CONNECTED BY THIS CONTRACTOR.

NOTES:

1. GALVANIZED STEEL SPIKES TO DETER BIRDS AND HUMAN CLIMBING SUPPORT. MOUNTED TO PERFORATED, GALVANIZED STEEL TOP.
2. GALVANIZED STEEL MOUNTING FRAME C/W STAINLESS FULL LENGTH PIANO HINGE AND STAINLESS STEEL HASP FOR VANDAL COVER. THE CITY OF WINNIPEG WILL PROVIDE A PADLOCK LOCK FOR EACH VANDAL COVER.
3. MOUNTING POINTS IN FRAME FOR MOUNTING TO EXISTING PIER CONCRETE SURFACE. USE STAINLESS STEEL ANCHORS TO INSTALL FRAME. SILICONE ENTIRE MOUNTING FRAME SURFACE BETWEEN FRAME AND CONCRETE.
4. WELDED 25mm x 4mm THICK STEEL ANGLE IRON VANDAL COVER FRAME C/W GALVANIZED FINISH HINGED TO MOUNTING FRAME.
5. FIXTURE TYPE 'C' AS PER LUMINAIRE SCHEDULE ON THIS SHEET.
6. 4mm THICK MIN. LEXAN SHEETS FOR FRONT, SIDES AND BOTTOM OF VANDAL COVER, SILICONE SEALED TO ANGLE IRON FRAME INTERIOR. DRILL 2x6mmØ DRAINAGE HOLES THROUGH BOTTOM COVER.

2 UNDERBRIDGE LIGHTING VANDAL COVER
 1 : 10

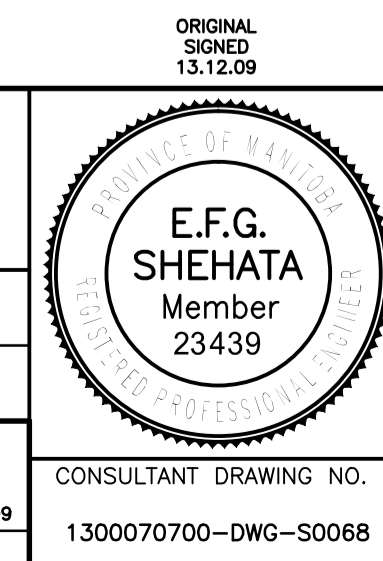


B.M. ELEV.	F.B.	DATE	BY
0	ISSUED FOR TENDER	13.12.09	V.B.
	NO. REVISIONS	DATE	BY

TETRA TECH

DESIGNED BY: H.C.	CHECKED BY: V.B.
DRAWN BY: G.I.	APPROVED BY: E.F.S.
HOR. SCALE: AS NOTED	RELEASED FOR CONSTRUCTION DATE: 13.12.09
VERTICAL: AS NOTED	ORIGINAL SIGNED: 13.12.09

J. BURNEY, P. ENG. BRIDGE PROJECTS ENGINEER



THE CITY OF WINNIPEG
 PUBLIC WORKS DEPARTMENT
 ENGINEERING DIVISION

PORTAGE AVENUE TWIN BRIDGES
 OVER STURGEON CREEK
 REHABILITATION AND RELATED WORKSS

UNDERBRIDGE LIGHTING

CITY DRAWING NUMBER: B178-14-068
 SHEET 68 OF 70

CONSULTANT DRAWING NO. 1300070700-DWG-S0068

68