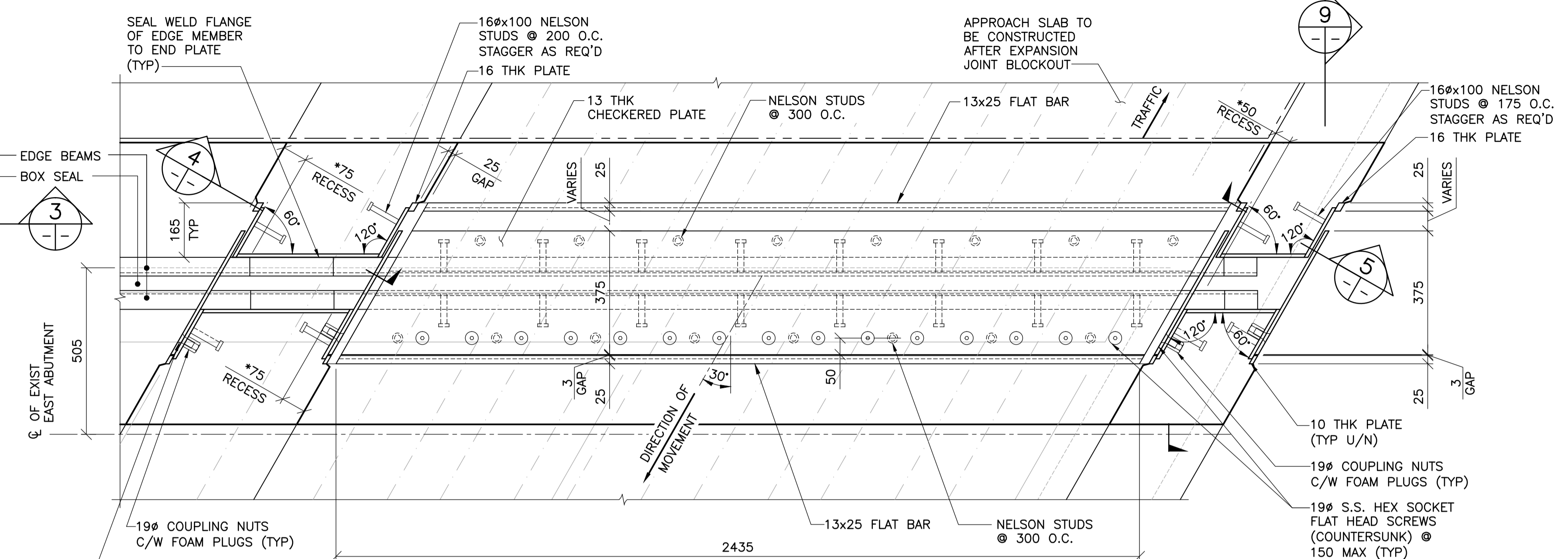
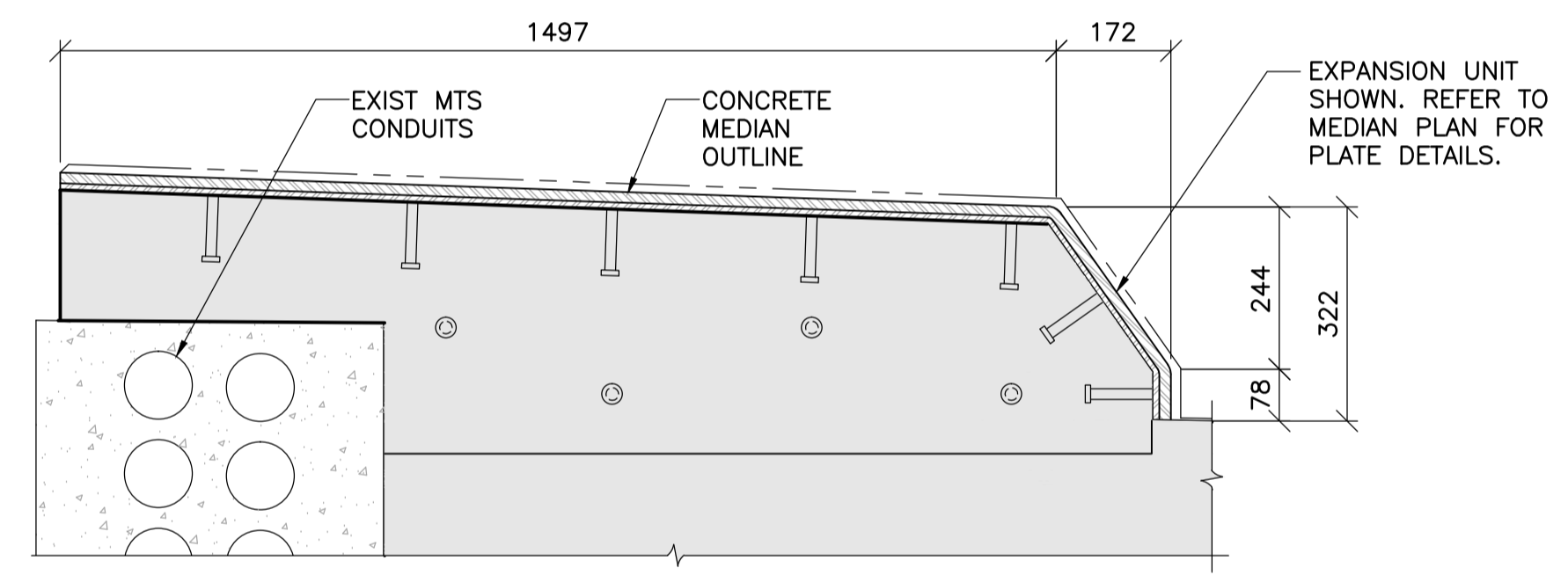


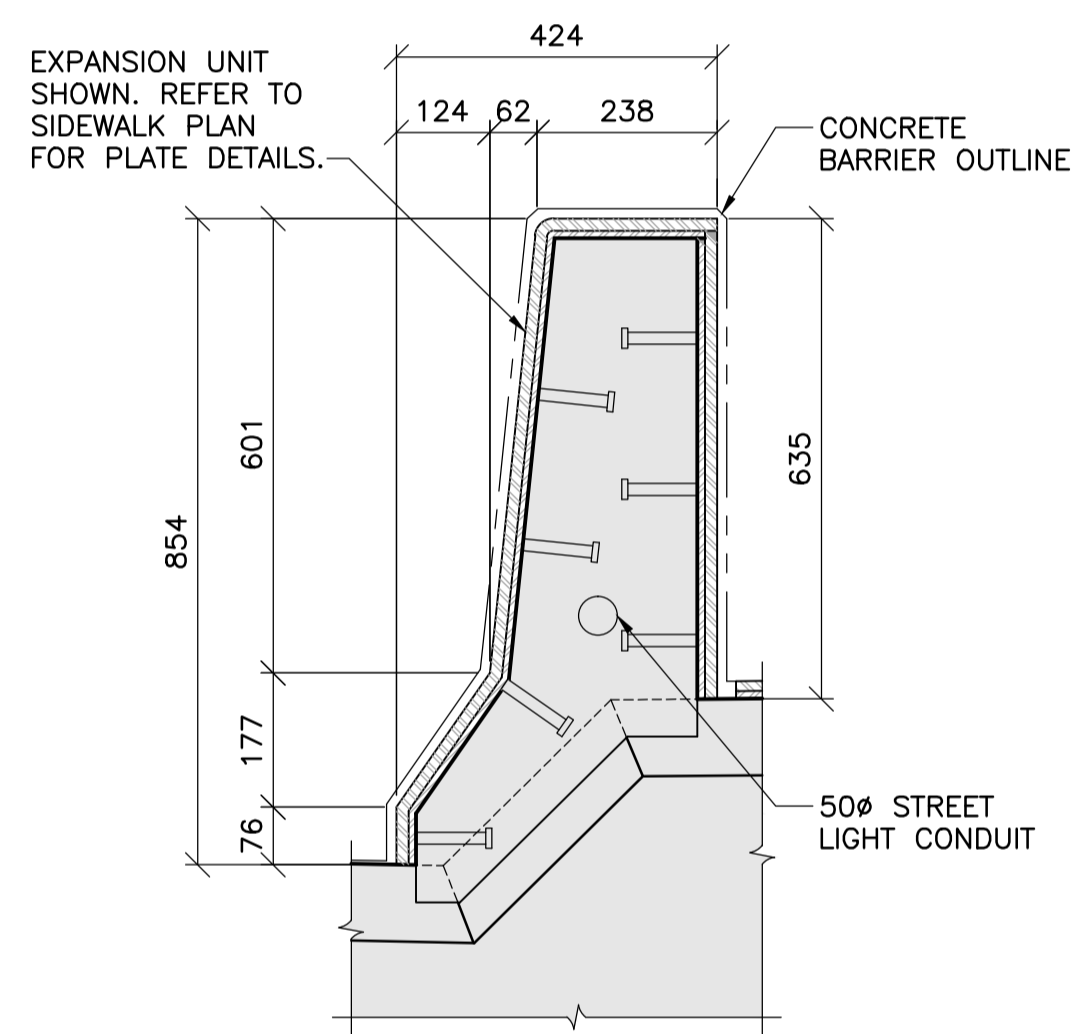
**1 MEDIAN PLAN**  
 1 : 10  
 - WABO D300  
 - SHOWN AT +20°C  
 - \*MINIMUM RECESS DEPTH FROM FACE OF CONCRETE TO EXTRUSION ANGLE BEND



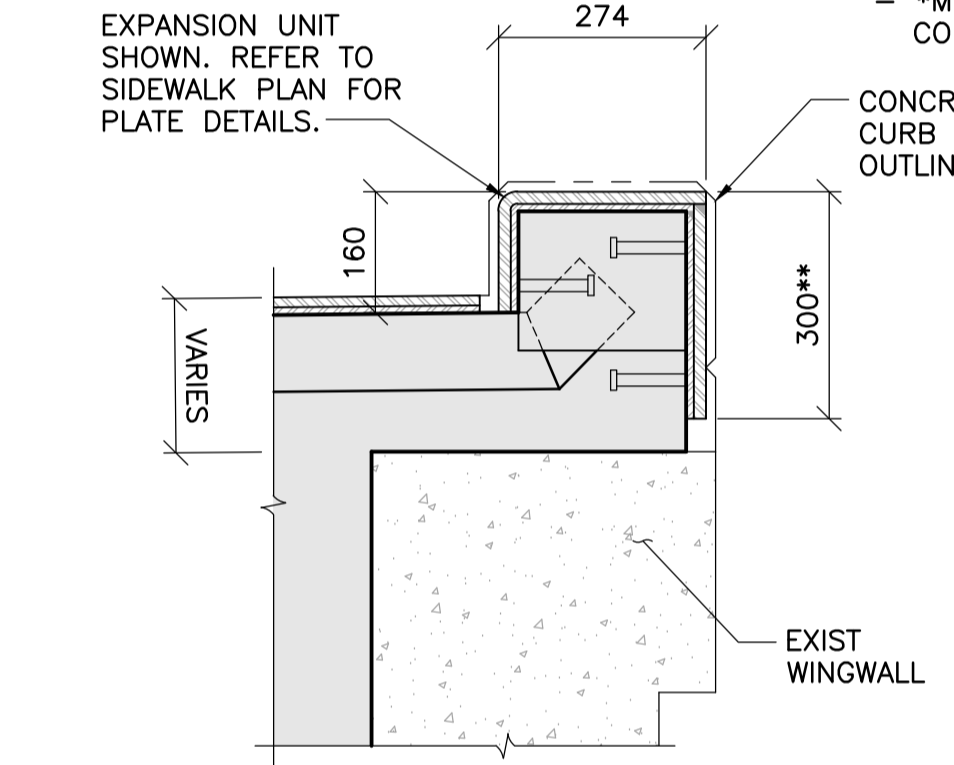
**2 SIDEWALK PLAN**  
 1 : 10  
 - WABO D300  
 - SHOWN AT +20°C  
 - \*MINIMUM RECESS DEPTH FROM FACE OF CONCRETE TO EXTRUSION ANGLE BEND



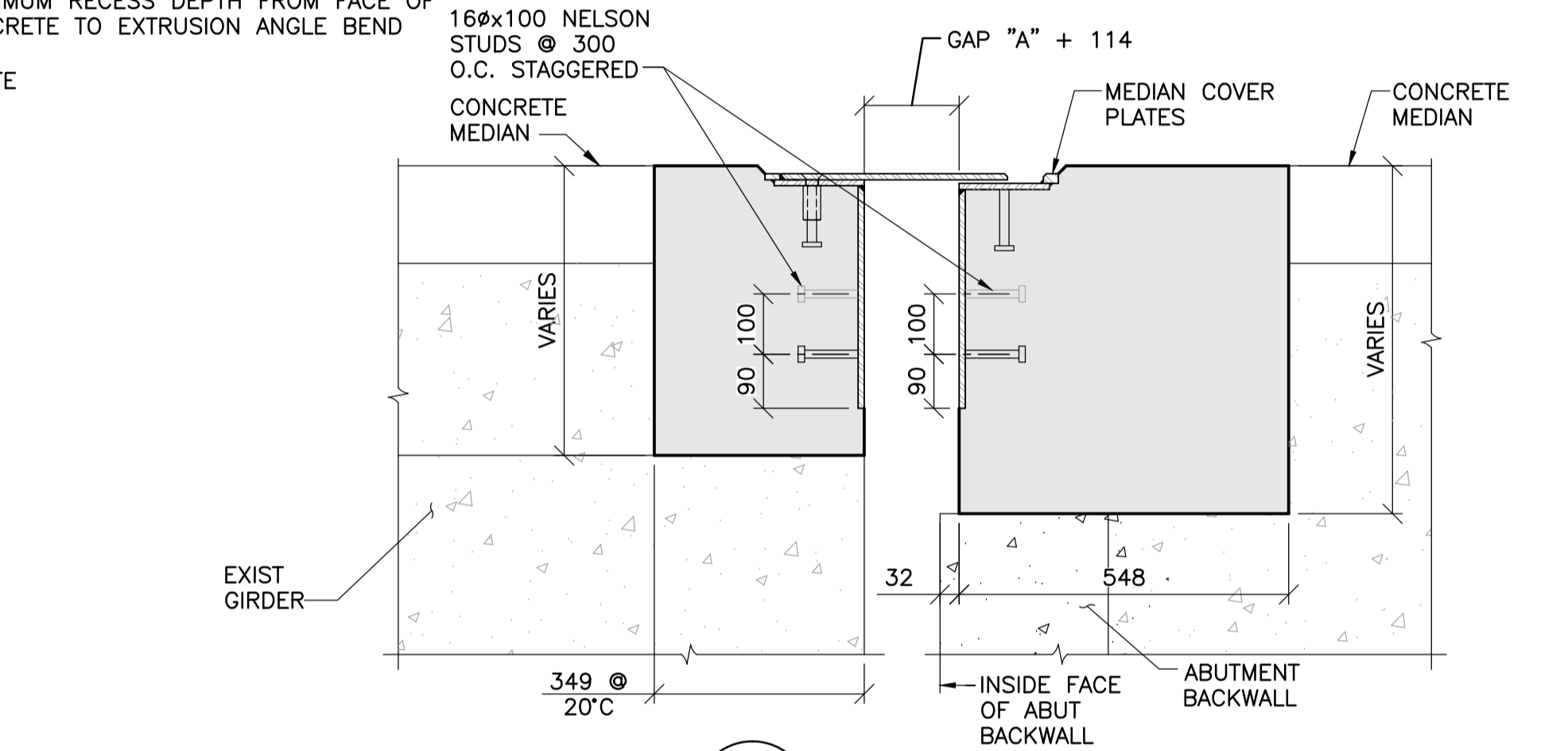
**3 SECTION**  
 1 : 10



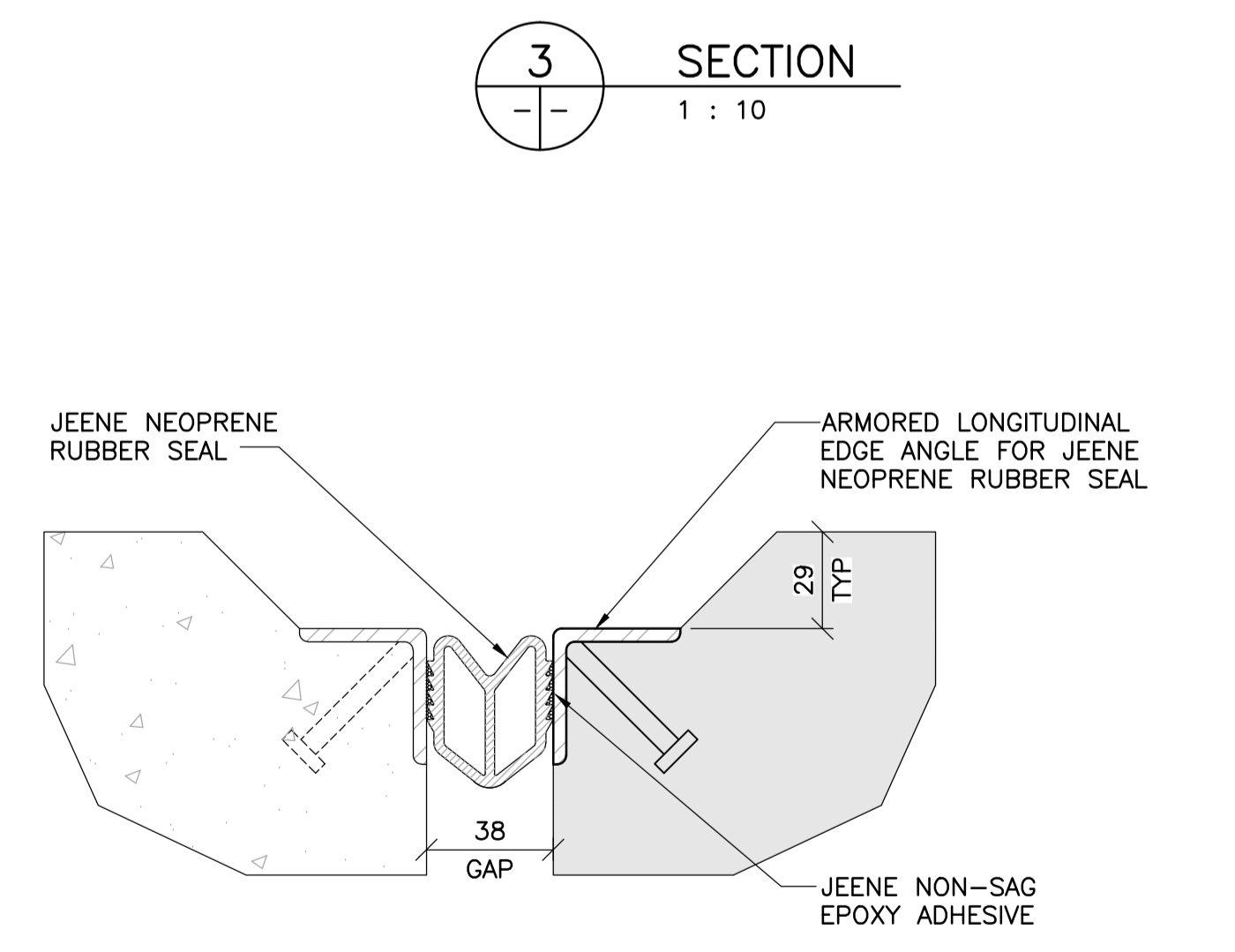
**4 SECTION**  
 1 : 10



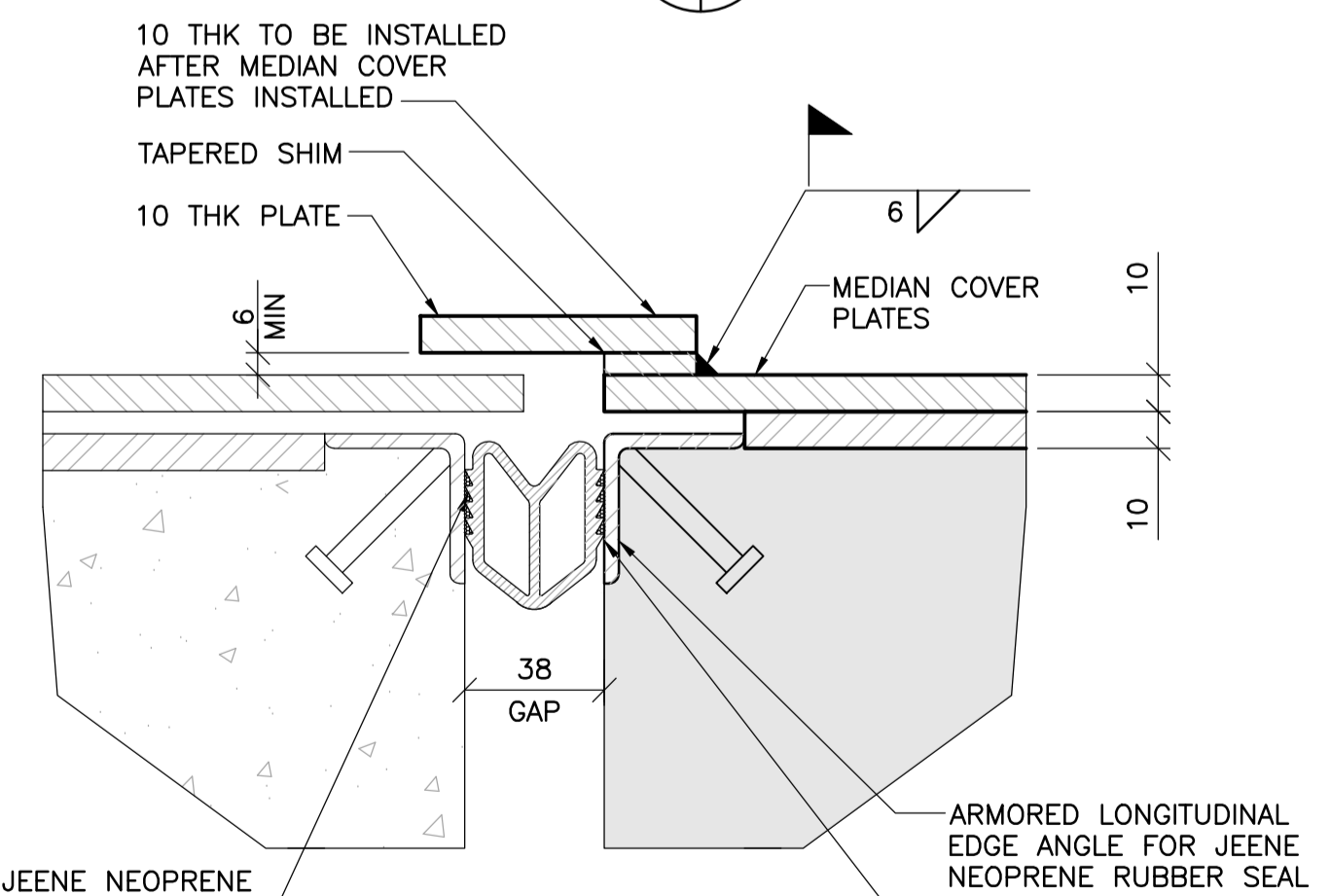
**5 SECTION**  
 1 : 10  
 - \*\*CONTRACTOR TO FIELD VERIFY CONCRETE LIMITS PRIOR TO COVER PLATE FABRICATION



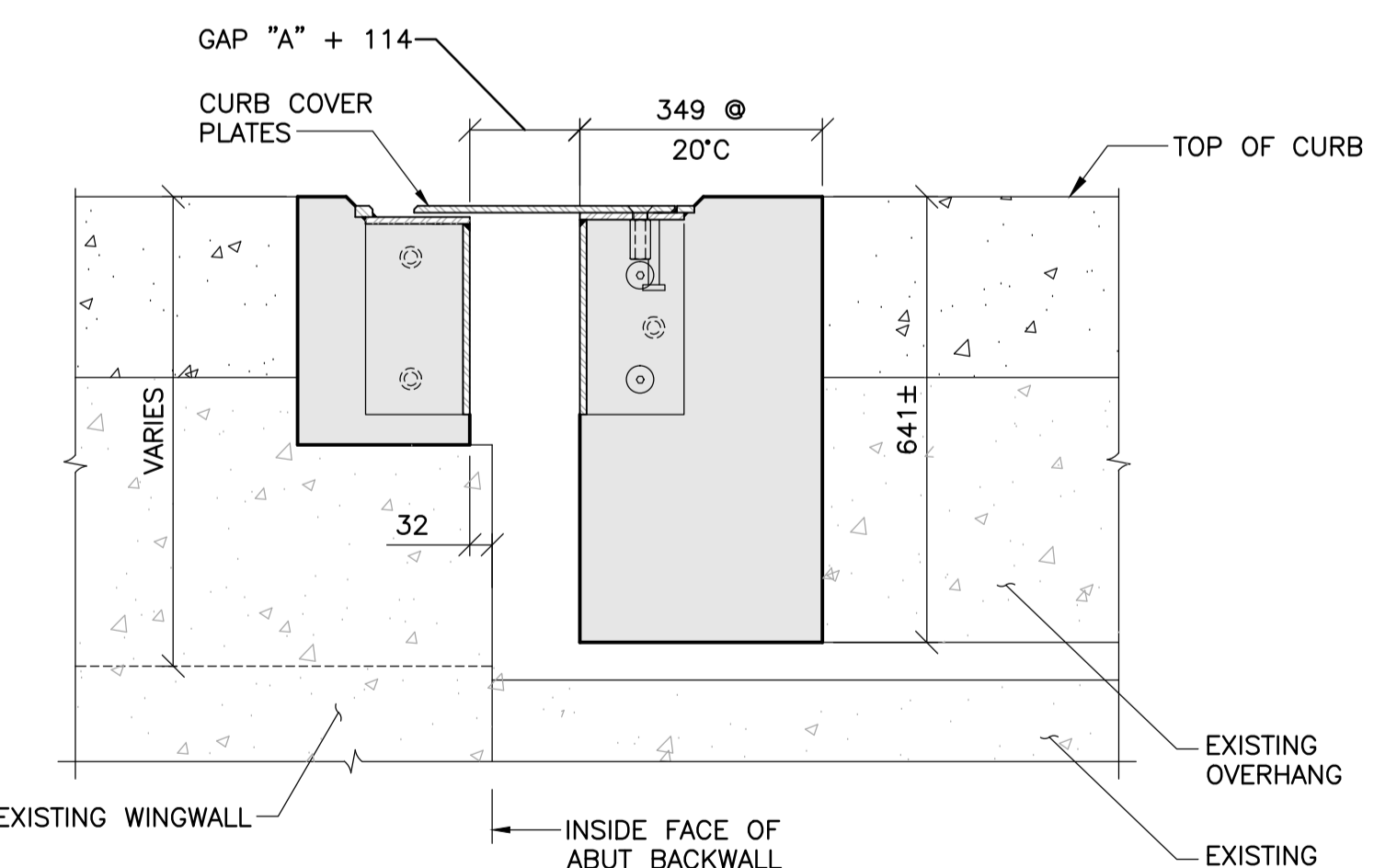
**6 SECTION**  
 1 : 10



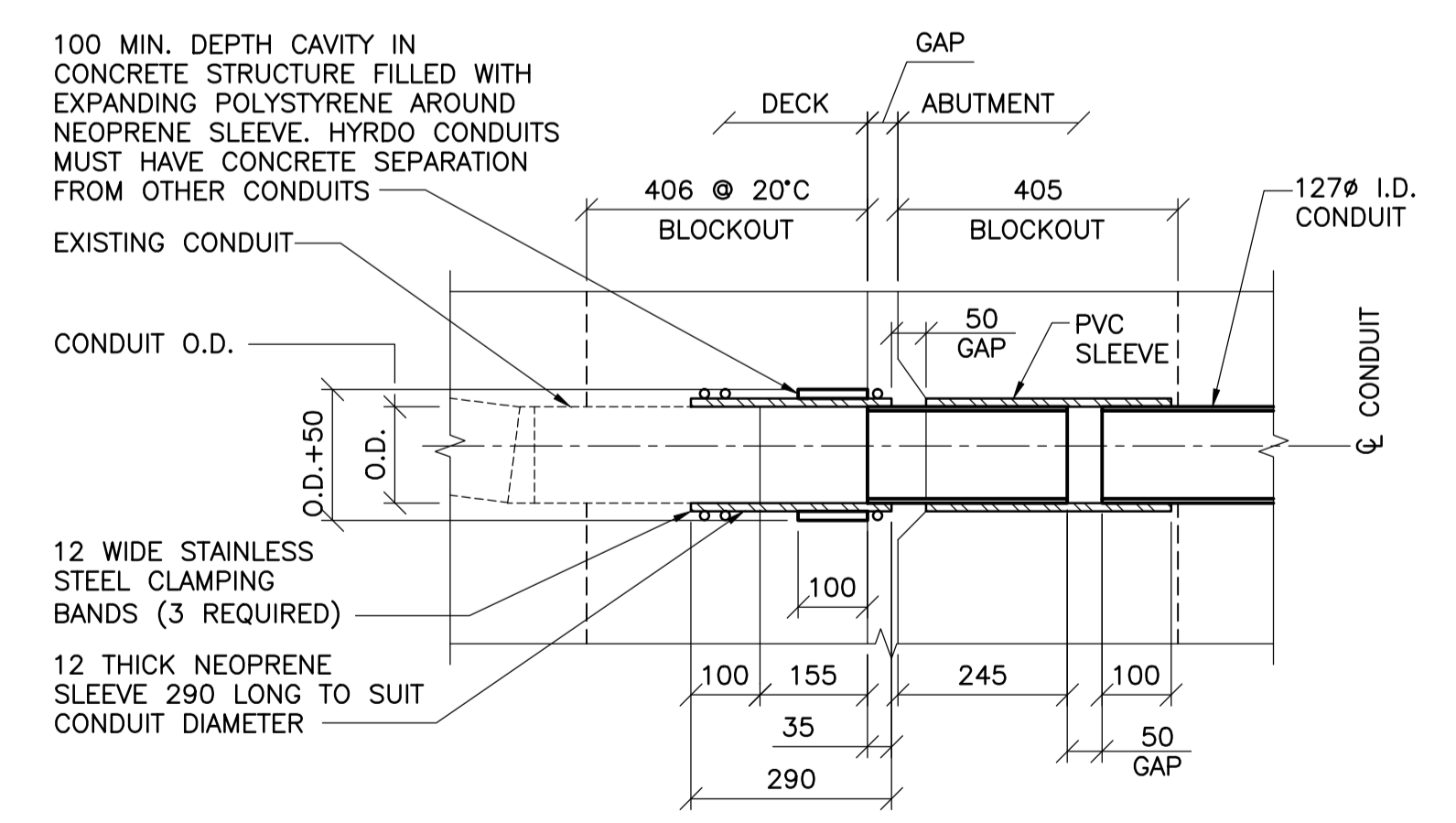
**7 SECTION**  
 1 : 2



**8 SECTION**  
 1 : 2



**9 SECTION**  
 1 : 10

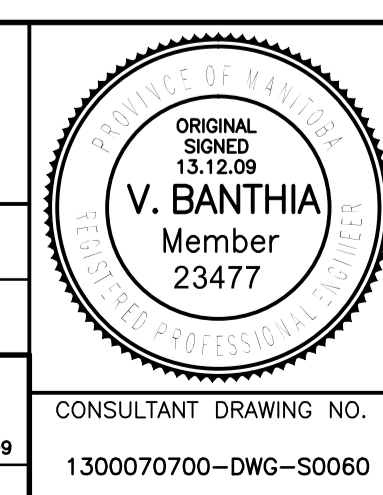


**10 PVC DUCT EXP JOINT ASSEMBLY**  
 1 : 10  
 - SHOWN AT 20°C



B.M. ELEV.	F.B.	DATE	BY
		13.12.09	V.B.
		13.08.28	

<b>TETRA TECH</b>	
DESIGNED BY: K.Y.	CHECKED BY: V.B.
DRAWN BY: E.V.	APPROVED BY: E.F.S.
HOR. SCALE: AS NOTED	RELEASED FOR CONSTRUCTION DATE: 13.12.09
VERTICAL: AS NOTED	ORIGINAL SIGNED: 13.12.09
CONSULTANT DRAWING NO. 1300070700-DWG-S0060	



**THE CITY OF WINNIPEG**  
 PUBLIC WORKS DEPARTMENT  
 ENGINEERING DIVISION

**PORTAGE AVENUE TWIN BRIDGES**  
 OVER STURGEON CREEK  
 REHABILITATION AND RELATED WORKS

**PHASE 2 CONSTRUCTION**  
 EAST ABUTMENT EXPANSION JOINT  
 SECTIONS AND DETAILS

CITY DRAWING NUMBER: B178-14-060  
 SHEET 60 OF 70

60