

1 PLAN - PHASE 2 REMOVAL  
1 : 125  
- FOR SUBPHASING AND ELECTRICAL RELOCATION REFER TO SHEET 41

- LEGEND:**
- PARTIAL DEPTH REMOVALS
  - FULL DEPTH REMOVALS
  - MTS DUCTS
  - HYDRO DUCTS
  - GAS LINE

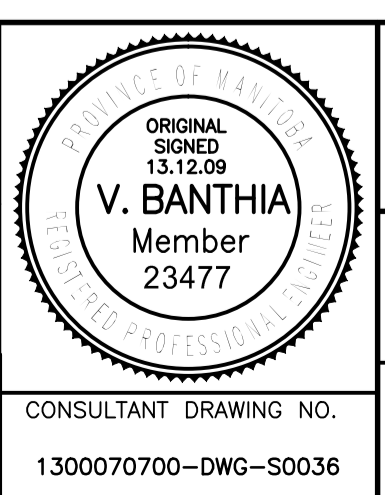
**NOTE:**  
CONTRACTOR MUST VERIFY ALL EXISTING UTILITIES PRIOR TO DEMOLITION, EXCAVATION OR CONSTRUCTION.



B.M. ELEV.	F.B.	DATE	BY
0	ISSUED FOR TENDER	13.12.09	V.B.
	NO. REVISIONS	DATE	BY

**TETRA TECH**

DESIGNED BY: D.M.	CHECKED BY: V.B.
DRAWN BY: G.I./B.M.	APPROVED BY: E.F.S.
HOR. SCALE: AS NOTED	RELEASED FOR CONSTRUCTION DATE: 13.12.09
VERTICAL:	ORIGINAL SIGNED: 13.12.09
	D. BURNETT, P. KENNEDY, BRIDGE PROJECTS ENGINEER



**THE CITY OF WINNIPEG**  
PUBLIC WORKS DEPARTMENT  
ENGINEERING DIVISION

**PORTAGE AVENUE TWIN BRIDGES**  
OVER STURGEON CREEK  
REHABILITATION AND RELATED WORKS

PHASE 2 REMOVALS  
SOUTH STRUCTURE - PLAN

CITY DRAWING NUMBER	B178-14-036
SHEET OF	36 OF 70
	36

CONSULTANT DRAWING NO. 1300070700-DWG-S0036