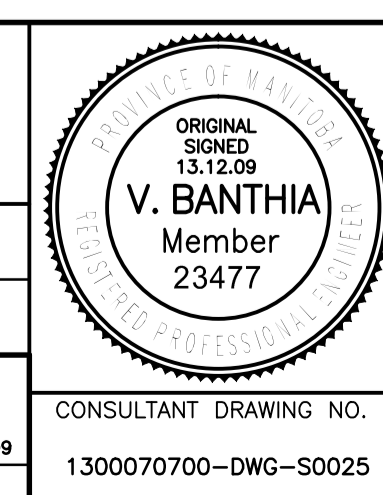


NOTE:
 LOCATE REINFORCING SPLICES NOT INDICATED ON THE DRAWINGS AT POINTS OF MINIMUM STRESS. LOCATIONS OF SPLICES TO BE APPROVED BY CONTRACT ADMINISTRATOR.



| B.M. ELEV. | F.B. | DATE | BY |
|------------|------|----------|------|
| | | 13.12.09 | V.B. |
| | | 13.07.18 | |

| | |
|----------------------|--|
| TETRA TECH | |
| DESIGNED BY: D.M. | CHECKED BY: V.B. |
| DRAWN BY: B.M. | APPROVED BY: E.F.S. |
| HOR. SCALE: AS NOTED | RELEASED FOR CONSTRUCTION DATE: 13.12.09 |
| VERTICAL: AS NOTED | ORIGINAL SIGNED: 13.12.09 |
| 0 ISSUED FOR TENDER | NO. REVISIONS |



THE CITY OF WINNIPEG
 PUBLIC WORKS DEPARTMENT
 ENGINEERING DIVISION

PORTAGE AVENUE TWIN BRIDGES
 OVER STURGEON CREEK
 REHABILITATION AND RELATED WORKS

PHASE 1 CONSTRUCTION
 EAST APPROACH SLAB REINFORCING

CITY DRAWING NUMBER: B178-14-025
 SHEET 25 OF 70

25