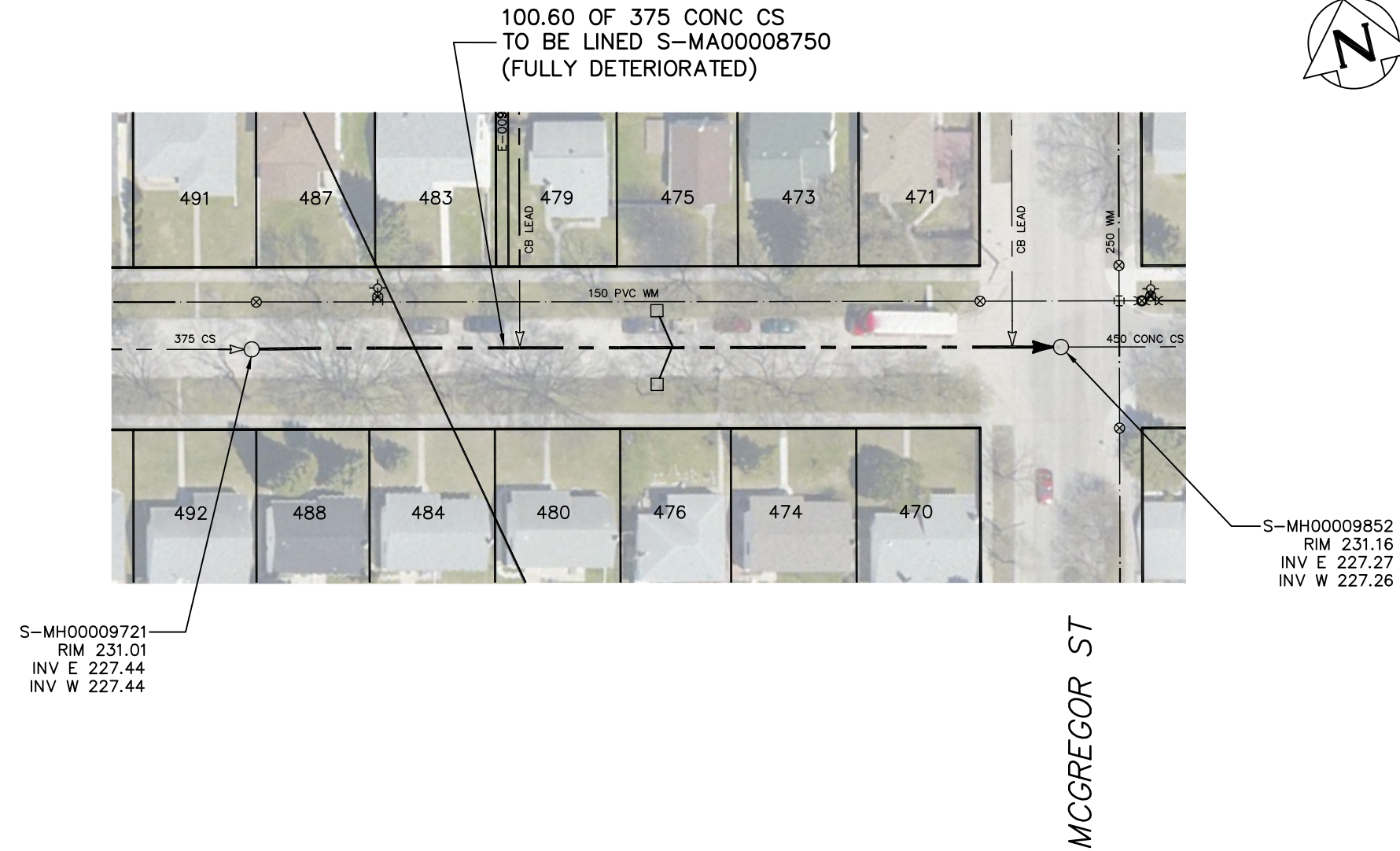


PERTH AVENUE



100.60 OF 375 CONC CS
TO BE LINED S-MA00008750
(FULLY DETERIORATED)

S-MH00009721
RIM 231.01
INV E 227.44
INV W 227.44

S-MH00009852
RIM 231.16
INV E 227.27
INV W 227.26

SEWER JUNCTION INFORMATION FROM SEWER VIDEO INSPECTION SEWER ID S-MA00008750		
DISTANCE FROM MH ID S-MH00009721		
DISTANCE	DIAMETER	CLOCK
6.1	150	2
15.5	150	11
29.5	150	10
29.5	150	2
32.9	150	11
39.5	150	2
43.4	150	2
45.7	150	10
50.6	150	10
51.1	150	3
54.3	150	2
61.2	150	10
70.0	150	10
71.4	150	10
74.4	150	2
80.7	150	11
86.0	150	2
93.9	150	9

WARNING

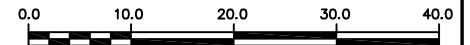
IF POWER EQUIPMENT OR EXPLOSIVES
ARE TO BE USED FOR EXCAVATION ON
THIS PROJECT THE CONTRACTOR MUST:

- 1) NOTIFY THE GAS COMPANY OF THE
PROPOSED LOCATION OF EXCAVATION.
- 2) TAKE PRECAUTION TO AVOID DAMAGE
TO GAS COMPANY INSTALLATIONS.

SEE PROVINCIAL REGULATION 210/72 FOR DETAILS

METRIC

WHOLE NUMBERS INDICATE MILLIMETRES
DECIMALIZED NUMBERS INDICATE METRES



LOCATION APPROVED UNDERGROUND STRUCTURES

SUPV. U/G STRUCTURES COMMITTEE DATE

NOTE:
LOCATION OF UNDERGROUND STRUCTURES AS
SHOWN ARE BASED ON THE BEST INFORMATION
AVAILABLE BUT NO GUARANTEE IS GIVEN THAT ALL
EXISTING UTILITIES ARE SHOWN OR THAT THE GIVEN
LOCATIONS ARE EXACT. CONFIRMATION OF
EXISTENCE AND EXACT LOCATION OF ALL
SERVICES MUST BE OBTAINED FROM THE INDIVIDUAL
UTILITIES BEFORE PROCEEDING WITH CONSTRUCTION.

B.M. ELEV.			
CONSTRUCTION COMPLETION DATE: YYYY MM DD			
NO.	REVISIONS	DATE	BY

DESIGNED BY	SC	CHECKED BY	SC
DRAWN BY	CJH	APPROVED BY	KZ
SCALE:		RELEASED FOR CONSTRUCTION	
HORIZONTAL	1:750		
VERTICAL			
DATE	2013 11 28	DATE	

ENGINEER'S SEAL

CONSULTANT DRAWING NUMBER

-



THE CITY OF WINNIPEG

WATER AND WASTE DEPARTMENT
ENGINEERING DIVISION

2013 SEWER RENEWALS
BY CIPP LINING
PERTH AVENUE
1ST MH W OF MCGREGOR STREET TO
MH AT MCGREGOR STREET

SHEET 37 OF 46
CITY DRAWING NUMBER

10657