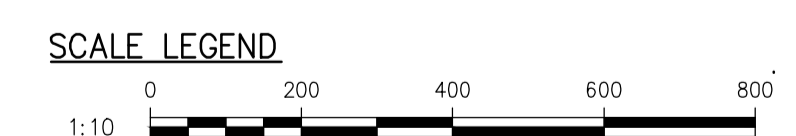
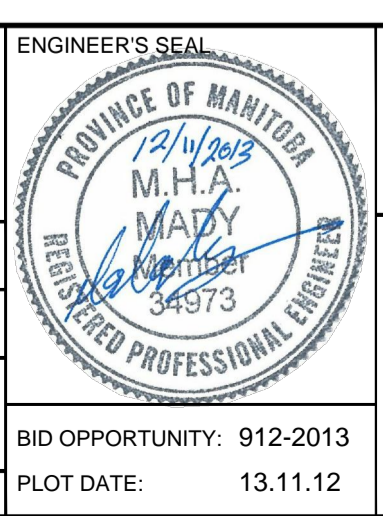


DETAIL 1-S6/S2 1:10 **METRIC** WHOLE NUMBERS INDICATE MILLIMETRES DECIMALIZED NUMBERS INDICATE METRES **DETAIL 2-S6/S2 1:10**



DESIGNED BY MM		CHECKED BY WC	
DRAWN BY FD/KDB		APPROVED BY EH	
HOR. SCALE AS NOTED		RELEASED FOR CONSTRUCTION	
VERT. SCALE AS NOTED			
1	ISSUED FOR TENDER	13.11.12	EH
No.	REVISIONS	DATE	BY
		13.11.12	
		13.11.12	



THE CITY OF WINNIPEG
WASTE AND WATER DEPARTMENT
Winnipeg

OUTFALL GATE CHAMBER UPGRADES
McDERMOT AVENUE
SRS OUTFALL GATE CHAMBER
ACCESS HATCH DETAILS (SHEET 1 OF 2)

CONSULTANT DRAWING No.: 5513108-S6
SHEET 7 OF 22
CITY DRAWING No.: LD-7252

BID OPPORTUNITY: 912-2013
PLOT DATE: 13.11.12

Printed November 15, 2013, at 4:29:29 PM. | User: S:\DWG\DWG_Plotter\C | Layout: 7 Access Hatch Details (Sheet 1 of 2)
 File: P:\5513108-S6\5513108-S6.mxd | User: S:\DWG\DWG_Plotter\C | Layout: 7 Access Hatch Details (Sheet 1 of 2)

NOTE: These design documents are prepared solely for the use by the party with whom the design professional has entered into a contract and there are no representations of any kind made by the design professional to any party with whom the design professional has not entered into a contract.