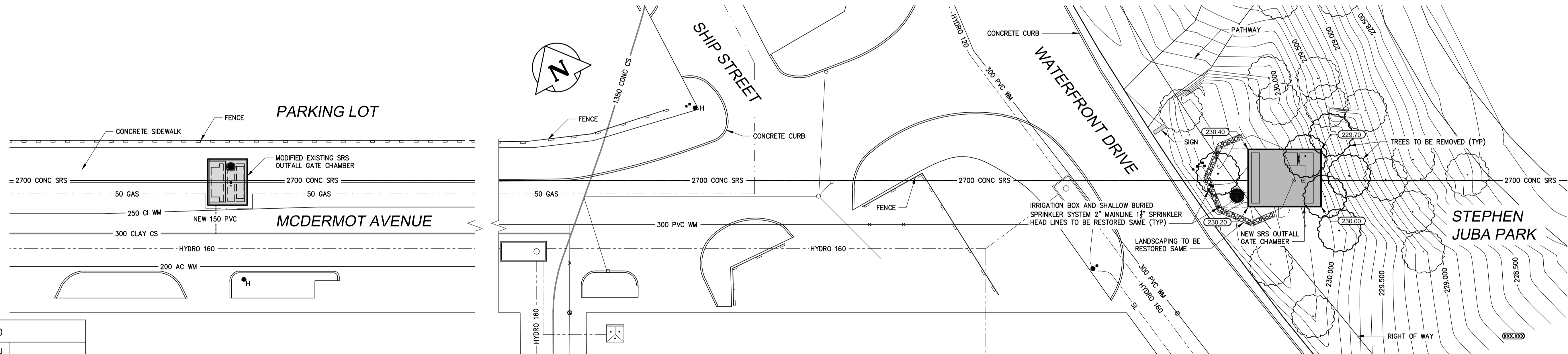


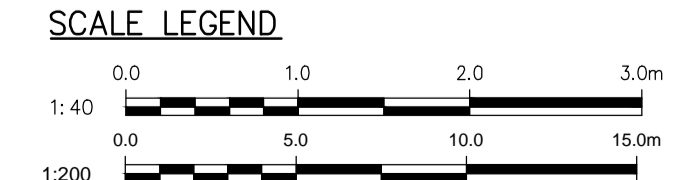
SECTION THROUGH CENTERLINE OF EXISTING 2700Ø SRS PIPE
 VERTICAL 1:40
 HORIZONTAL 1:200



SITE PLAN
 1:200

PLAN LEGEND

DESCRIPTION	
GAS	50 GAS
WATER MAIN	200 AC WM
HYDRO	HYDRO 160
STORM RELIEF SEWER	2700 CONC SRS
COMBINE SEWER	1350 CONC CS
STREET LIGHT	SL



- CONSTRUCTION NOTES:**
- RESTORE ALL DISTURBED GRASS AREAS WITH IMPORTED TOP SOIL AND SOD IN ACCORDANCE WITH CW 3510.
 - LEAVE SLUICE GATE IN FULL OPEN POSITION AT ALL TIMES EXCEPT WHEN ON-SITE WORKING ON GATE.
 - PROVIDE TEMPORARY PUMPING OF FLOW IN SRS AS REQUIRED DURING CONSTRUCTION.
 - PREVENT EXCAVATED MATERIAL, BACKFILL MATERIAL AND SOIL / WATER SLURRY FROM ENTERING LDS OUTFALL TO THE RIVER.
 - DO NOT REMOVE EXISTING TREES UNLESS NOTED OTHERWISE. PROVIDE TREE PROTECTION IN ACCORDANCE WITH SPECIFICATIONS.
 - CONFIRM LOCATION AND ELEVATION OF EXISTING LDS BEFORE CONSTRUCTION COMMENCES.

ELEVATION LEGEND:
 (---) TOP OF EXISTING GROUND ELEVATION

METRIC
 WHOLE NUMBERS INDICATE MILLIMETRES
 DECIMALIZED NUMBERS INDICATE METRES

No.	ISSUED FOR TENDER	DATE	BY	DATE	DATE
1	ISSUED FOR TENDER	13.11.12	EH		
	REVISIONS	DATE	BY	DATE	DATE
				13.11.12	13.11.12



MMM Group Limited
 Suite 111 - 93 Lombard Ave.
 Winnipeg, MB R3B 3B1
 T. 204.943.3178 | F. 204.943.4948
 www.mmm.ca



THE CITY OF WINNIPEG
 WASTE AND WATER DEPARTMENT
 Winnipeg

OUTFALL GATE CHAMBER UPGRADES
 McDERMOT AVENUE
 SRS OUTFALL GATE CHAMBER
 SITE PLAN

CONSULTANT DRAWING No.: 5513108-S1
 SHEET 2 OF 22
 CITY DRAWING No.: LD-7247

BID OPPORTUNITY: 912-2013
 PLOT DATE: 13.11.12

Printed: November 15, 2013, at 4:57 PM | User: S:\dwg\Planners\C...
 File: P:\5513108-S1\5513108-S1\5513108-S1\5513108-S1\5513108-S1.dwg | Layout: 2 Site Plan