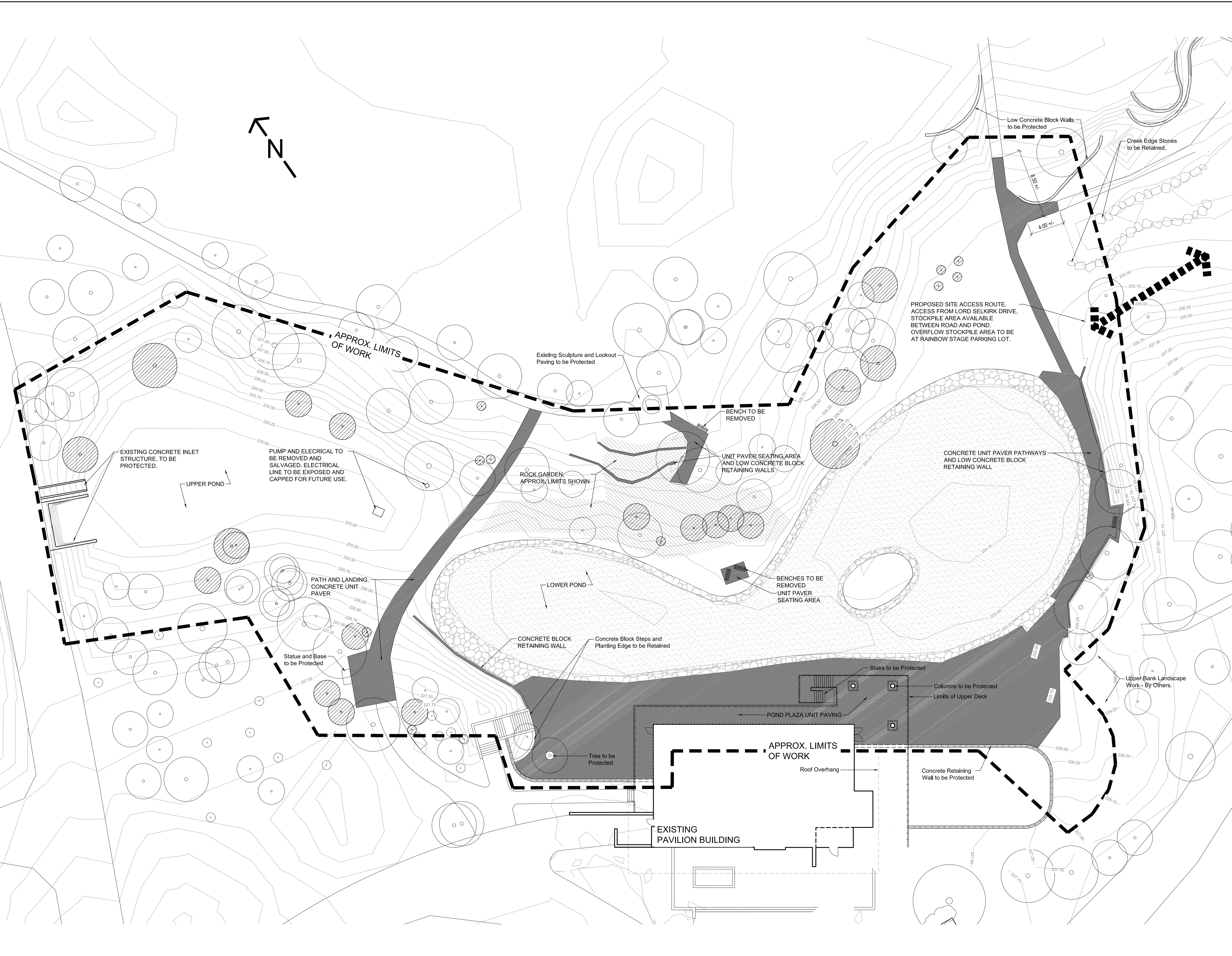


sheet size - Super A1 24" x 36" plot scale - 1:1 (metric) CAD File Name: kp\_base\_detailed design\_working\_title.dwg



- NOTES:**
- LEGEND - EXISTING TO BE RETAINED**
- TREES/ LARGE SHRUBS
  - CONTOUR, 0.25M INTERVAL - REFER TO GRADING PLAN
- LEGEND - REMOVALS**
- PAVING & RETAINING WALLS C/W BASE MATERIAL:
    - CONCRETE UNIT PAVERS - NOTE: 100SM PATHWAY UNIT PAVERS TO BE RETAINED AND STOCKPILED FOR FUTURE RE-INSTALLATION (RE-INSTALLATION N.I.C.)
    - CONCRETE BLOCK RETAINING WALLS
  - ROCK GARDEN
    - BOULDERS TO BE STOCKPILED.
    - PRIOR TO REMOVAL, PLANTS TO BE REVIEWED BY CITY AND TURNED OVER TO PARK FOR RE-INSTALLATION IF REQUIRED.
    - EXACT LIMITS AND REMOVALS/ SALVAGE TO BE DETERMINED ON SITE WITH CONTRACT ADMINISTRATOR AND CITY OF WINNIPEG.
  - BOULDER POND EDGE (APPROX. 270SM)
    - LARGE LIMESTONE BOULDERS, 1M-2M DIAM. TYP. SIZE
    - BOULDERS TO BE STOCKPILED FOR LATER RE-USE. ANY BOULDERS IN POOR CONDITION TO BE LEGALLY DISPOSED.
  - STONE POND BASE (APPROX. 387 CU. M)
    - RIVER STONE, 300MM DEPTH TYPICAL
    - STONE TO BE REMOVED AND LEGALLY DISPOSED.
  - TREES AND LARGE SHRUBS
    - LOCATIONS SHOWN APPROXIMATE ONLY. TO BE VERIFIED AND FLAGGED ON SITE WITH LANDSCAPE ARCHITECT AND ARBORIST PRIOR TO REMOVAL
  - BENCHES
    - TO BE REMOVED AND DISPOSED OF UNLESS OTHERWISE REQUESTED BY CITY OF WINNIPEG.

- TREE & SHRUB REMOVAL NOTES:**
1. TREES TO BE REMOVED SHALL BE VERIFIED AND MARKED ON SITE BY CITY FORESTER WITH CONTRACT ADMINISTRATOR AND CONTRACTOR PRIOR TO ANY CONSTRUCTION. CONTRACTOR TO ENSURE NO TREES ARE REMOVED THAT HAVE NOT BEEN MARKED AS ABOVE.
  2. ENSURE REMAINING TREES ARE PROTECTED AS PER TREE PROTECTION SPECIFICATION.
  3. SHRUBS TO BE REVIEWED WITH CITY OF WINNIPEG AND CONTRACT ADMINISTRATOR PRIOR TO REMOVAL AND EITHER MARKED FOR DISPOSAL OR HANDOVER TO PARK.

REV	YY / MM / DD	DESCRIPTION	DKM	BY
0	13 / 11 / 07	ISSUED FOR TENDER		

A. SECTION LETTER OR DETAIL NUMBER.	SEAL
B. DRAWING WHERE SECTION OR DETAIL IS DRAWN.	
OR	
A. DRAWING WHERE SECTION OR DETAIL IS INDICATED.	
--- SECTION OR DETAIL SHOWN ON SAME DRAWING.	

**SCATLIFF + MILLER + MURRAY Inc.**  
 TEL 204 927-3444 1120-201 PORTAGE AVENUE  
 FAX 204 927-3443 WINNIPEG, MB, CANADA

CLIENT  
**CITY OF WINNIPEG**

PROJECT  
**PEGUIS PAVILION  
 LANDSCAPING  
 POND EXCAVATION**

TITLE  
**EXISTING CONDITIONS  
 REMOVALS & SALVAGE**

DESIGN	DRAWN	DATE - Y / M / D	SCALE
JW	AH	13/11/07	1:200
CHECKED	APPROVED	JOB NO.	DRAWING NO.
DKM	DKM	12-0107-002	L-01