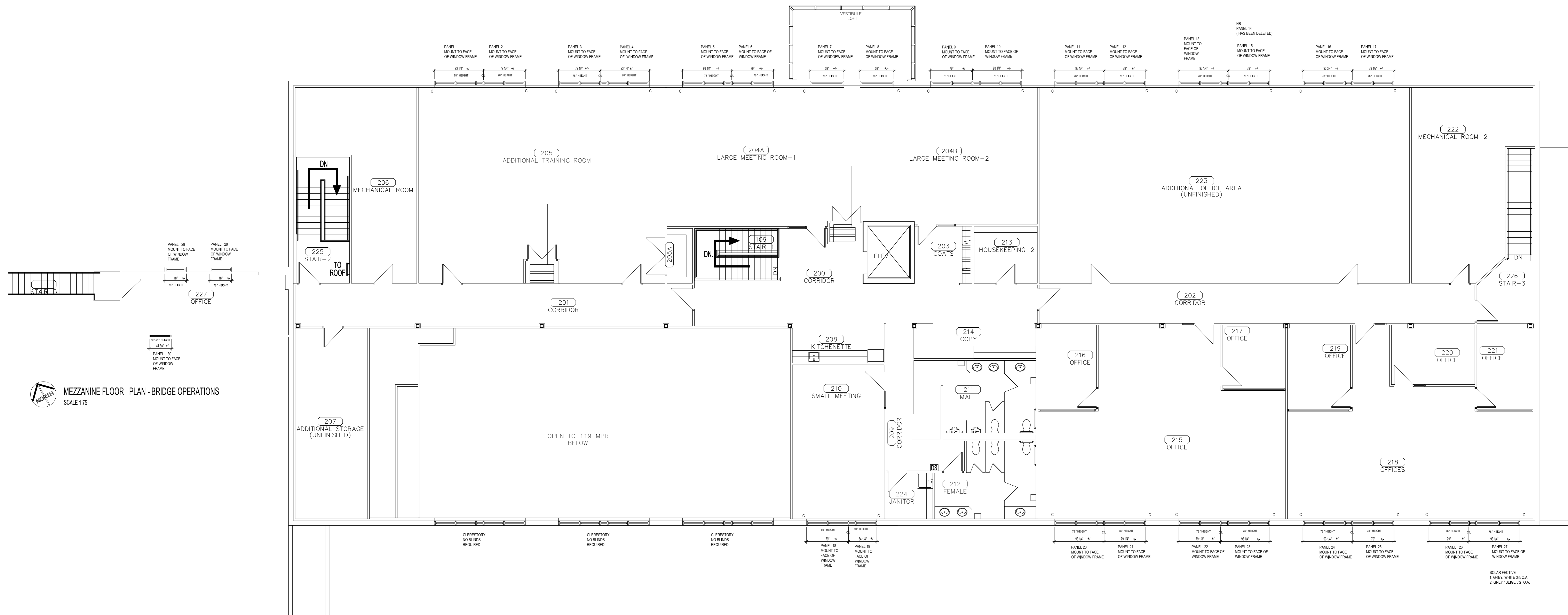


KEY PLAN - 960 THOMAS AVENUE, EAST YARDS COMPLEX
NOT TO SCALE - FOR REFERENCE ONLY



MEZZANINE FLOOR PLAN - BRIDGE OPERATIONS
SCALE 1/75

SECOND FLOOR PARTIAL PLAN - ADMINISTRATION BLOCK-BLDG. A
SCALE 1/75

NOTE:

IT IS THE RESPONSIBILITY OF THE WINDOW COVERING CONTRACTOR TO TAKE SITE MEASUREMENTS. SIZES INDICATED ON THE DRAWING MUST BE CONFIRMED BY THE CONTRACTOR.

GENERAL NOTES:

- THERE WILL BE FOUR GENERAL MOUNTING CONDITIONS:
1. MOUNTED TO FACE OF WINDOW FRAME (FACE MOUNTED)
 2. MOUNTED TO INSIDE OF WINDOW FRAME (INSIDE OR RECESSED MOUNT)
 3. MOUNTED TO UNDERSIDE OF TOP OF WINDOW OPENING (AKA SOFFIT MOUNTED)
 4. MOUNTED TO FINISHED DRYWALL SURFACE
 5. DIMENSIONS FOR WINDOW HEIGHTS AND WIDTHS INCLUDE WINDOW FRAMES, UNLESS OTHERWISE NOTED.
 6. ROLLER SHADE: SOLARFECTIVE 300 SERIES
COLOUR: FIRST CHOICE- GREY / WHITE DENSITY 3% O.A.
SECOND CHOICE- GREY/BEIGE DENSITY 3% O.A.
 7. TOTAL NUMBER OF PANEL BLINDS IS 66 UNITS.

LEGEND:

C - ROLLER BLIND PANEL CONTROL LOCATION

SOLAR FECTIVE
1. GREY / WHITE 3% O.A.
2. GREY / BEIGE 3% O.A.

No.	REVISION/DESCRIPTION	BY	DATE

DRAWN	CHECKED	DESIGNED	APPROVED

THE CITY OF WINNIPEG
PLANNING, PROPERTY AND
DEVELOPMENT DEPARTMENT
MUNICIPAL ACCOMMODATIONS DIVISION
3-65 GARRY STREET, R3C 4K4

PROJECT
PUBLIC WORKS DEPARTMENT
EAST YARDS COMPLEX
ADMINISTRATION
960 THOMAS AVENUE

SHEET TITLE
PARTIAL SECOND FLOOR PLAN-BLDG A
WINDOW COVERING PLAN

SCALE	PROJECT No:	SHEET No:
AS SHOWN		A1