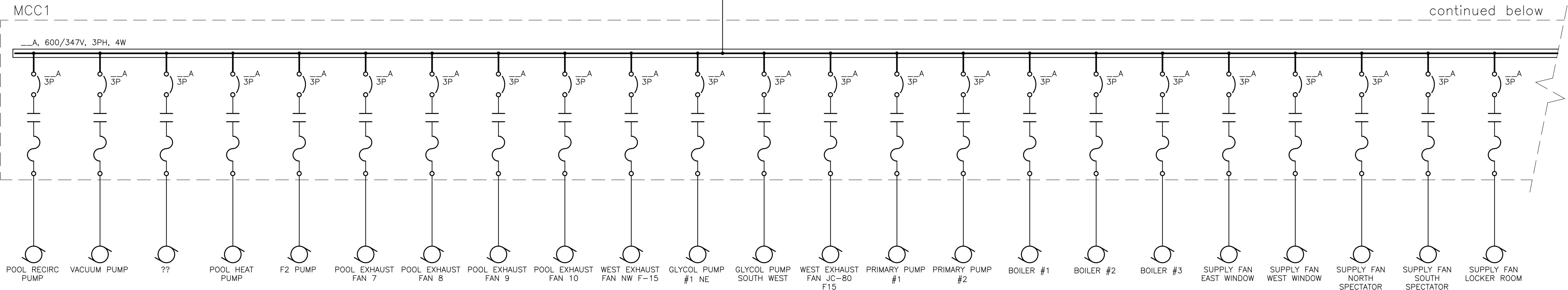
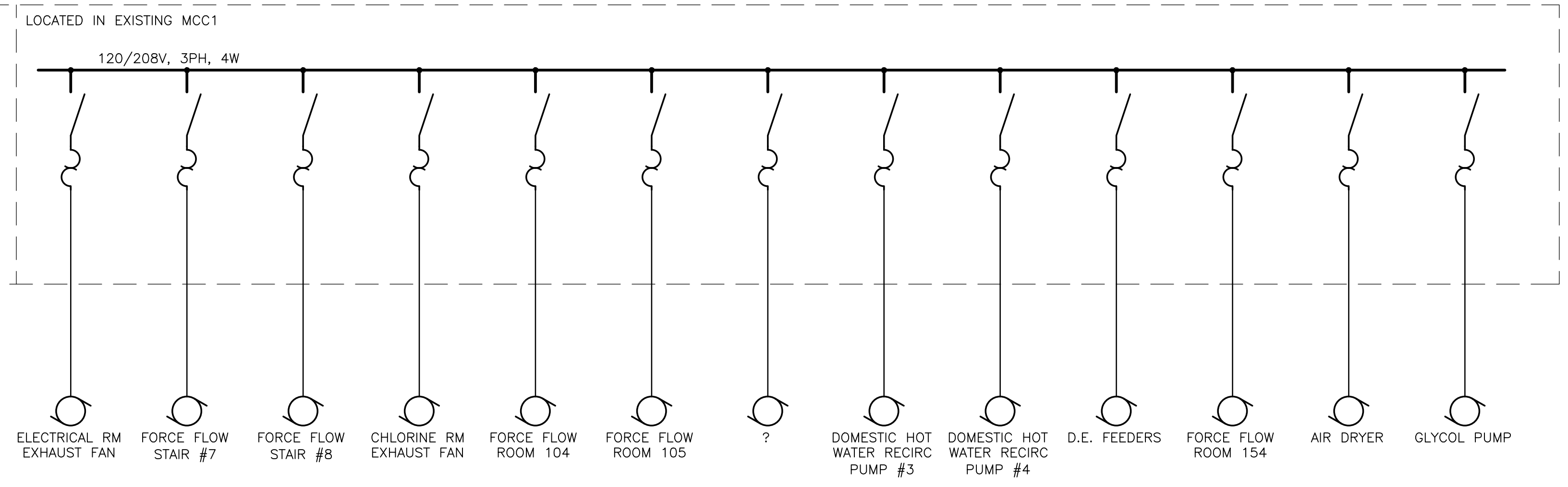
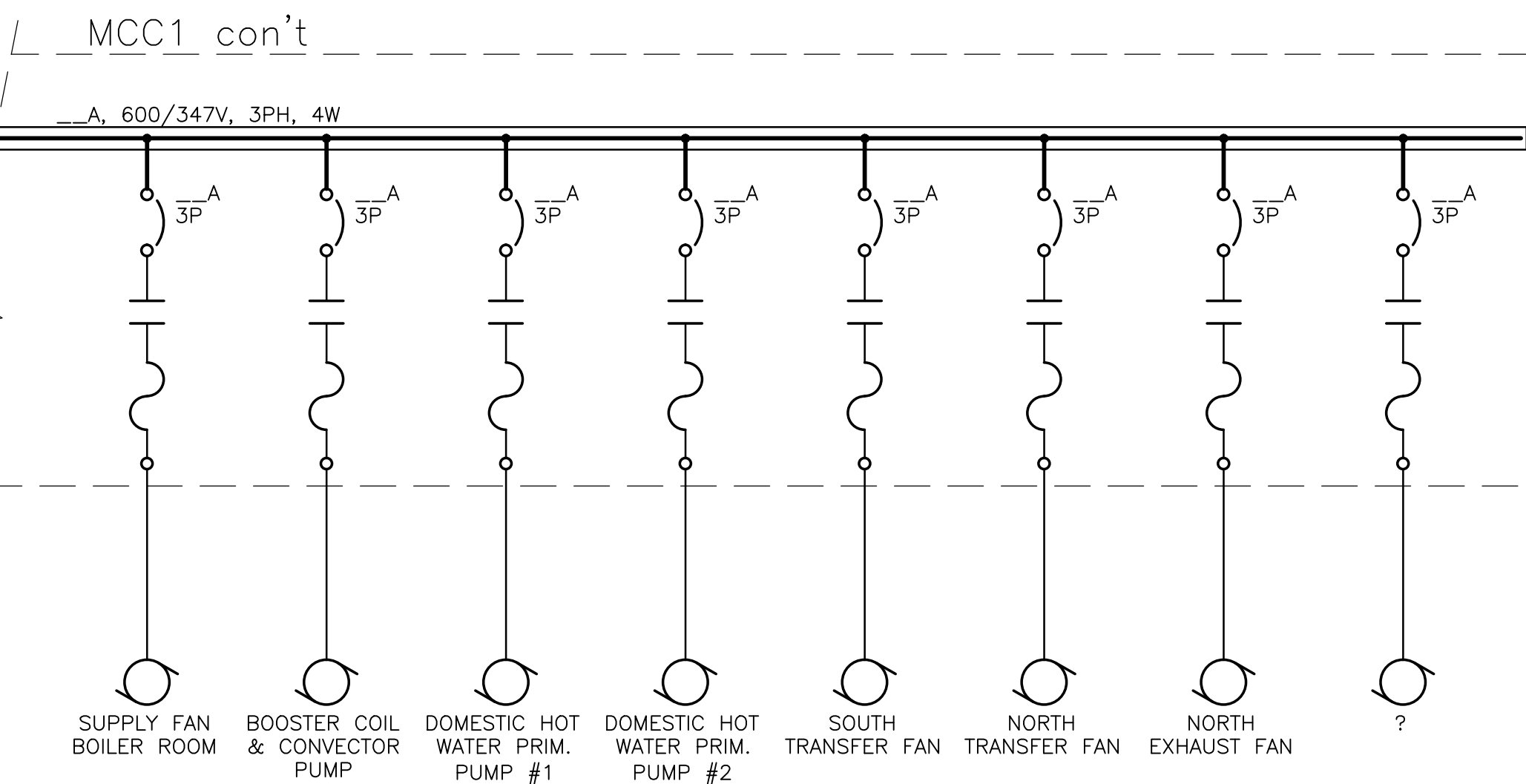


DILLON CONSULTING LIMITED 485 RICHMOND STREET, LONDON, ONTARIO, N6A 5A9, PHONE (519) 438-6192, FAX (519) 672-8209

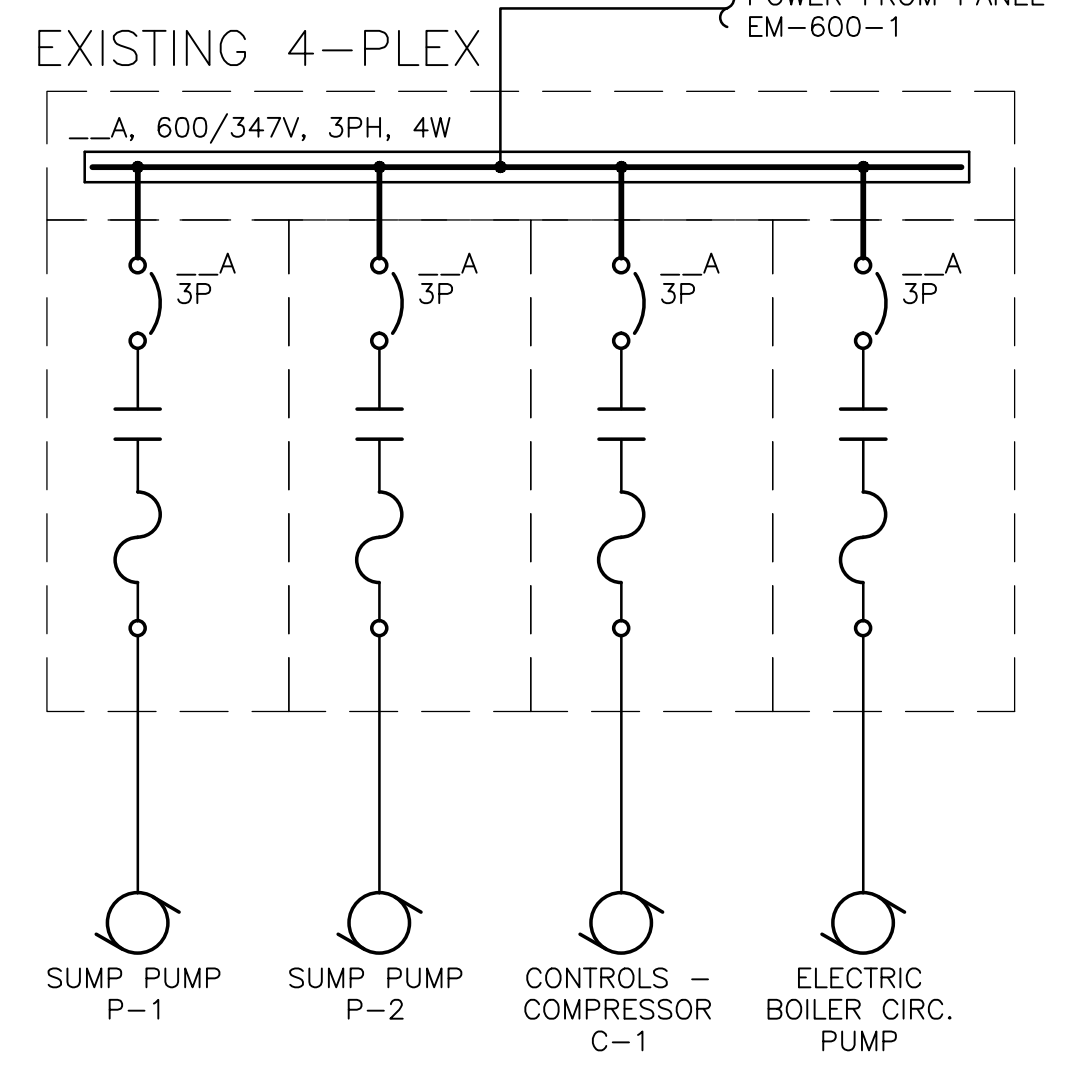
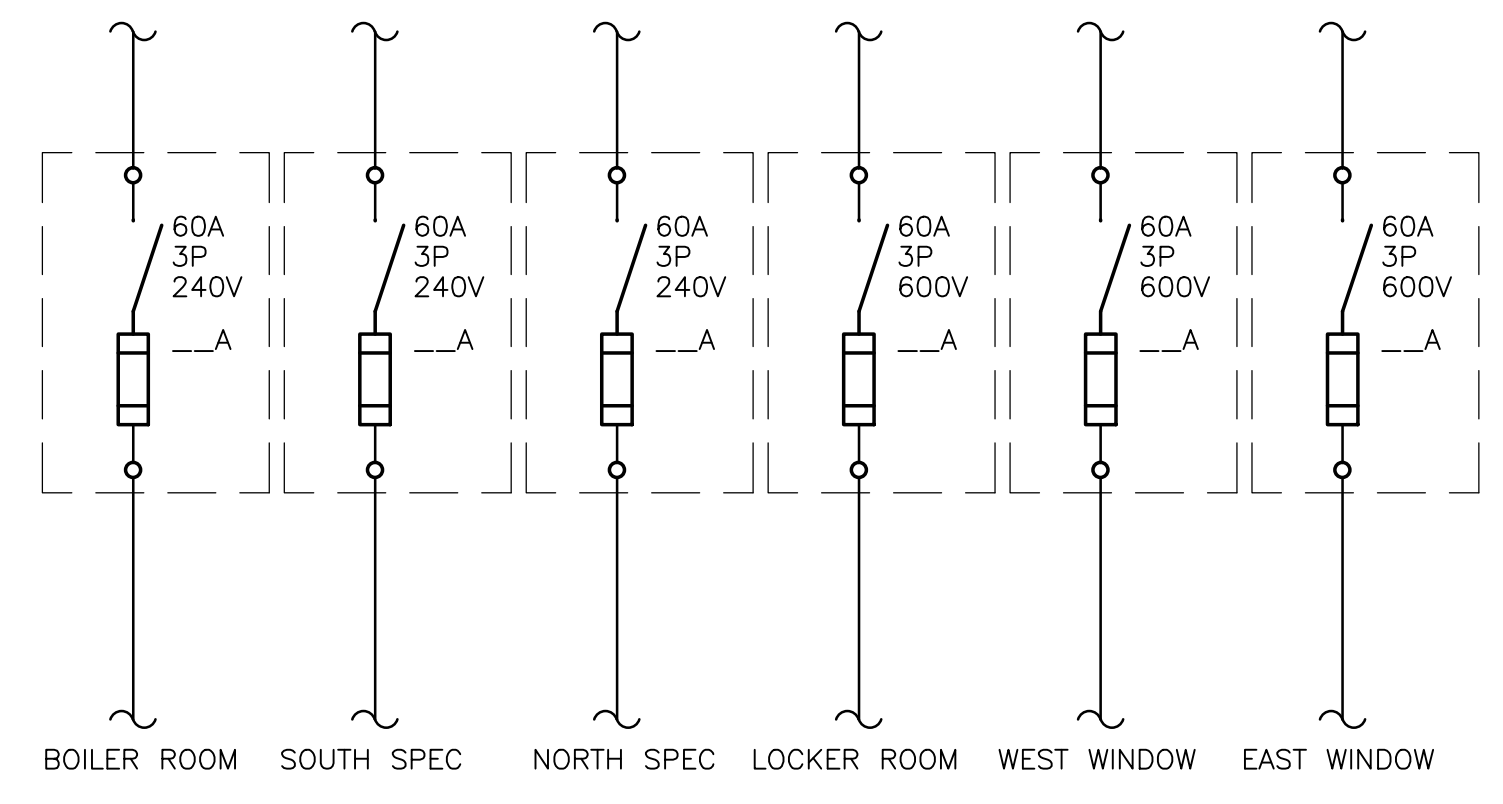
MCC1  
REFER TO DRAWING E1



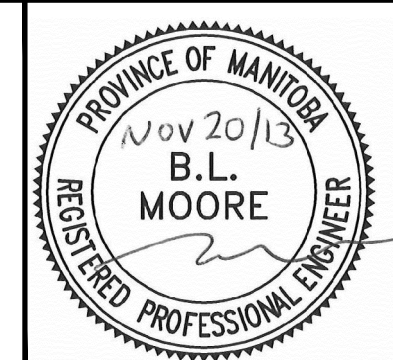
continued below



DISCONNECT SWITCHES MOUNTED ON EAST SIDE OF COLUMN SOUTH END OF EXISTING MCC1



**Conditions of Use**  
Verify elevations and/or dimensions on drawing prior to use. Report any discrepancies to Dillon Consulting Limited.  
Do not scale dimensions from drawing.  
Do not modify drawing, re-use it, or use it for purposes other than those intended at the time of its preparation without prior written permission from Dillon Consulting Limited.



|  |               |
|--|---------------|
| DESIGN                                     | REVIEWED BY   |
| DRAWN                                      | CHECKED BY    |
| DATE                                       | FEB. 12, 2013 |
| SCALE                                      | N.T.S.        |
| ISSUED FOR BID OPPORTUNITY NUMBER 850-2013 | 13-11-20      |
| No.  | ISSUED FOR    |
|  | DATE          |
|  | BY            |

|   |  |                          |
|---|--|--------------------------|
| PAN AM POOL ELECTRICAL UPGRADE                        |  | PROJECT NO.<br>137300    |
| ELECTRICAL - DEMOLITION<br>SINGLE LINE DIAGRAM 2 OF 2 |  | SHEET NO.<br><b>E402</b> |

File Name: g:\cad\137300\conform\electrical\el4.dwg