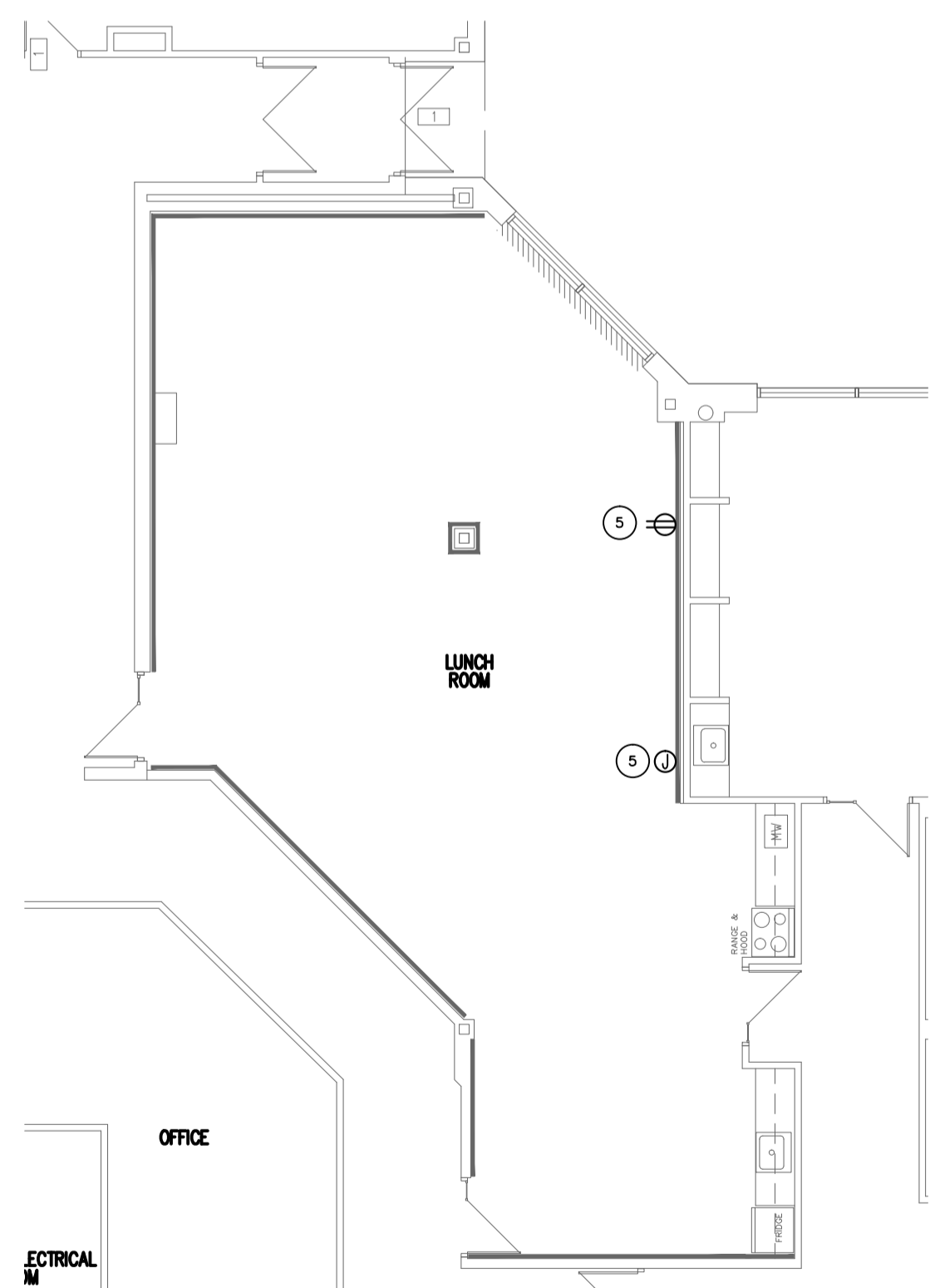


**PARTIAL MAIN FLOOR PLAN-LIGHTING AND POWER - DEMO**  
SCALE: 1/8"=1'-0"

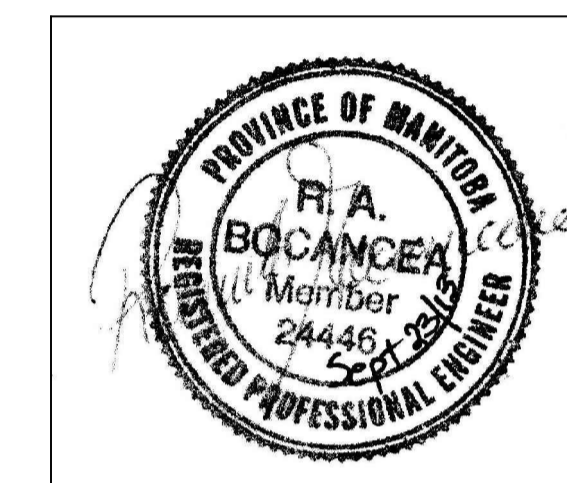
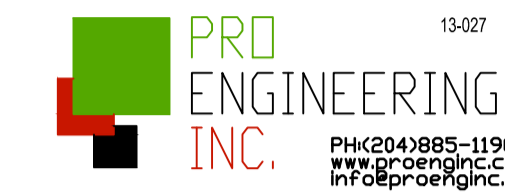


**PARTIAL MAIN FLOOR PLAN-LIGHTING AND POWER - DEMO**  
SCALE: 1/8"=1'-0"

KEY NOTES:	
1	REMOVE DEVICE.
2	REMOVE AND RELOCATE DEVICE.
3	DISCONNECT WIRING AND RECONNECT AS PER RENOVATION PLAN.
4	DEVICE TO REMAIN
5	REMOVE DEVICE, OUTLET BOX AND WIRING FROM THIS LOCATION. TAKE WIRING BACK TO NEAREST JUNCTION BOX AND SAFELY CAP.
6	REMOVE EXISTING LUMINAIRE.

DRAWING NOTES:	
1.	CONTRACTOR TO LOAD CIRCUITS TO A MAXIMUM OF 75% OF BREAKER RATING.
2.	EXISTING DEVICES AND FIXTURES NOT SHOWN ARE TO REMAIN. WHERE WIRING TO THESE ITEMS AFFECTS CONSTRUCTION, RELOCATE WIRING AS NECESSARY.
3.	COORDINATE MECHANICAL CONTROL CONNECTIONS WITH THAT DIVISION OF WORK.
4.	ALL EXISTING CIRCUITS IN THE WORK AREA ARE TO REMAIN TO BE RE-USED IN THE NEW CONSTRUCTION.
5.	RETAIN ALL DEVICES AND FIXTURES FOR RE-USE IN THE RENOVATION AREAS.

NOTES:



1	ISSUED FOR CONSTRUCTION	KO	23/09/13
No.	REVISION/DESCRIPTION	BY	DATE

DRAWN	KOLO	CHECKED	DESIGNED	KO	APPROVED
DATE	2013.09.23	USER	APPROVAL		

THE CITY OF WINNIPEG  
PLANNING, PROPERTY AND  
DEVELOPMENT DEPARTMENT  
MUNICIPAL ACCOMMODATIONS DIVISION  
3-65 GARRY STREET, R3C 4K4

PROJECT  
WASTE WATER SERVICES  
ALTERATIONS TO WASTE WATER  
OFFICE AREAS  
1199 PACIFIC AVENUE

SHEET TITLE  
DEMOLITION  
LIGHTING AND POWER

SCALE	PROJECT No:	SHEET No:
AS SHOWN	2013-027	E2.0