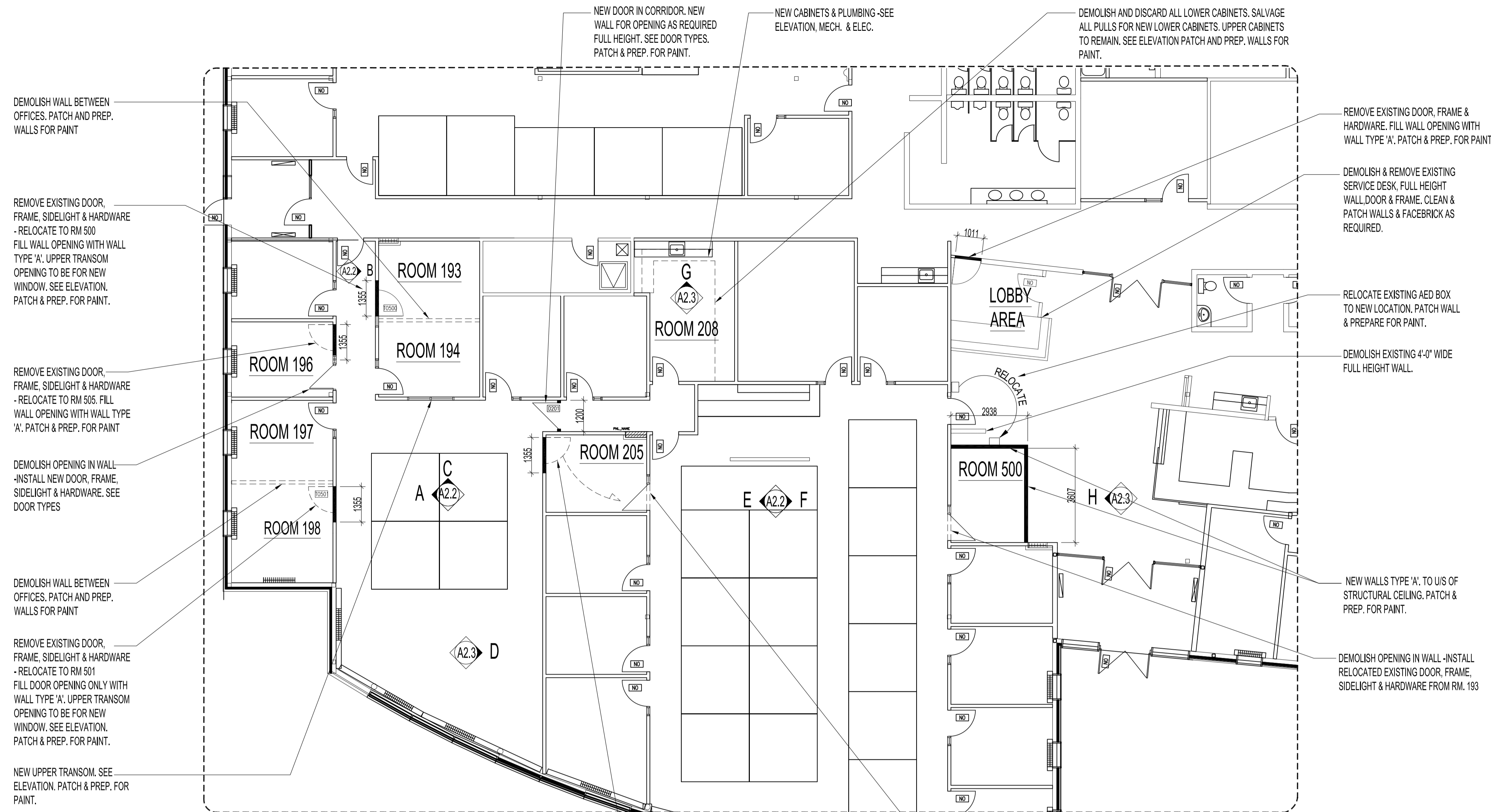


NOTES:



PARTIAL MAIN FLOOR PLAN - DEMOLITION & RENOVATION

LEGEND

--- WALL & MISC. DEMOLITION

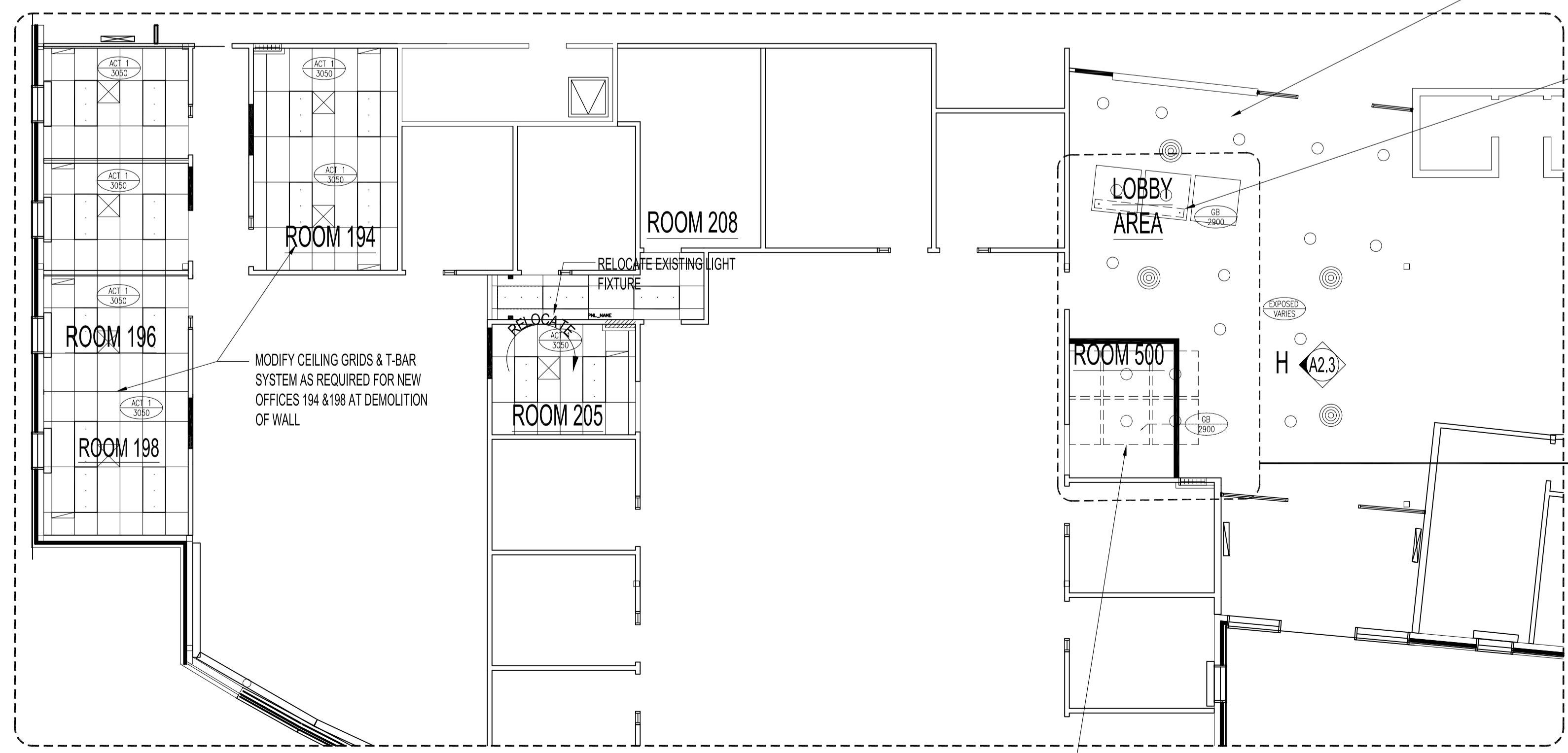
--- NEW WALL CONSTRUCTION

TYPE A NEW 1/2" GYPSUM BOARD B/S
NEW 3 5/8" STEEL STUDS @ 16" O.C.
PARTITIONS TO HEIGHTS SPECIFIED ON RENOVATION DWG
NOTE: PROVIDE WOOD BLOCKING FOR BATHROOM LAVATORY & ACCESSORIES AS PER MANUFACTURER'S INSTALLATION INSTRUCTIONS

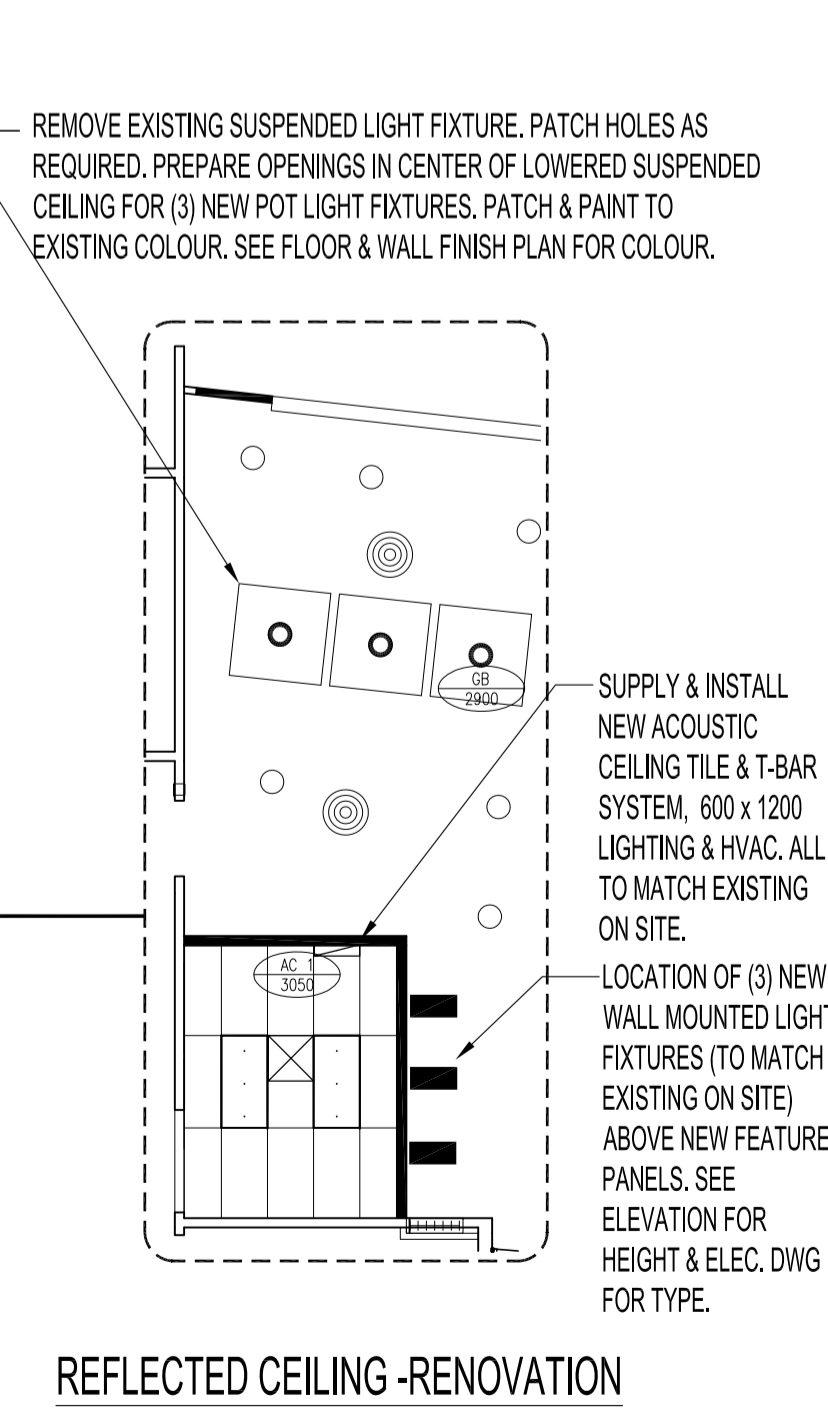
ACOUSTIC CEILING SPECIFICATION

-ARMSTRONG "FINE FIGURED" SQUARE LAY TILE MODEL # 1810
600mm x 1200mm x 15mm

-GRID SYSTEM TWO DIRECTIONAL EXPOSED TEE BAR GRID, TO BE ARMSTRONG PRELUDE XL, 15/16", EXPOSED TEE GRID SYSTEM.



PARTIAL MAIN FLOOR PLAN - REFLECTED CEILING - DEMOLITION & RENOVATION



REFLECTED CEILING - RENOVATION

No.	REVISION/DESCRIPTION	BY	DATE
SEAL			

DRAWN	CHECKED	DESIGNED	APPROVED
MMK			

DATE: 2013.09.13
 USER APPROVAL
 THE CITY OF WINNIPEG
 PLANNING, PROPERTY AND
 DEVELOPMENT DEPARTMENT
 MUNICIPAL ACCOMMODATIONS DIVISION
 3-65 GARRY STREET, R3C 4K4

PROJECT
 WASTE WATER SERVICES
 ALTERATIONS TO WASTE WATER
 OFFICE AREAS
 1199 PACIFIC AVENUE

SHEET TITLE
 PARTIAL MAIN FLOOR PLAN
 DEMOLITION & RENOVATION FOR HR,
 DIRECTOR'S OFFICE & CUSTOMER SERVICE

SCALE	PROJECT No:	SHEET No:
AS SHOWN	2013-101	A2.1