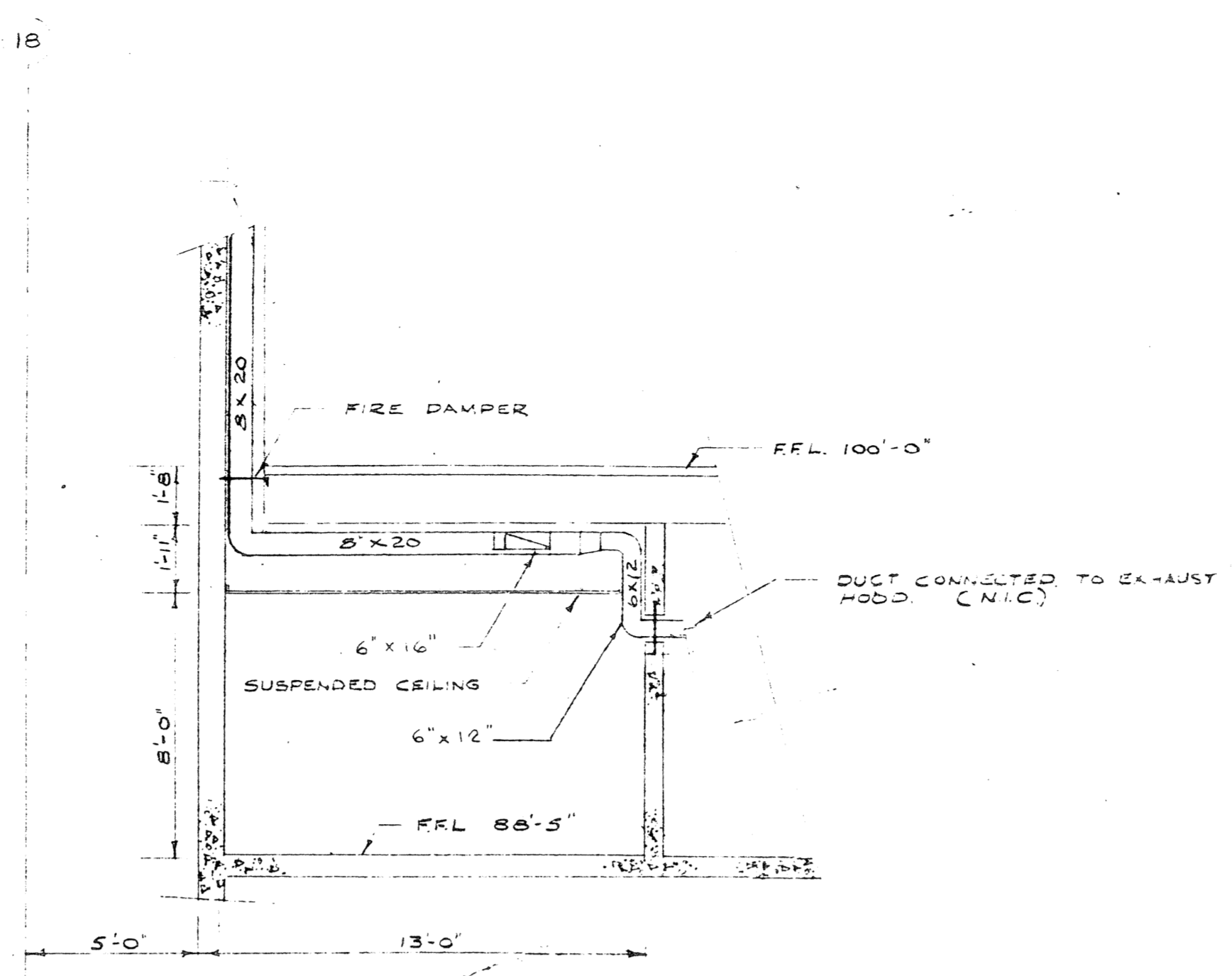
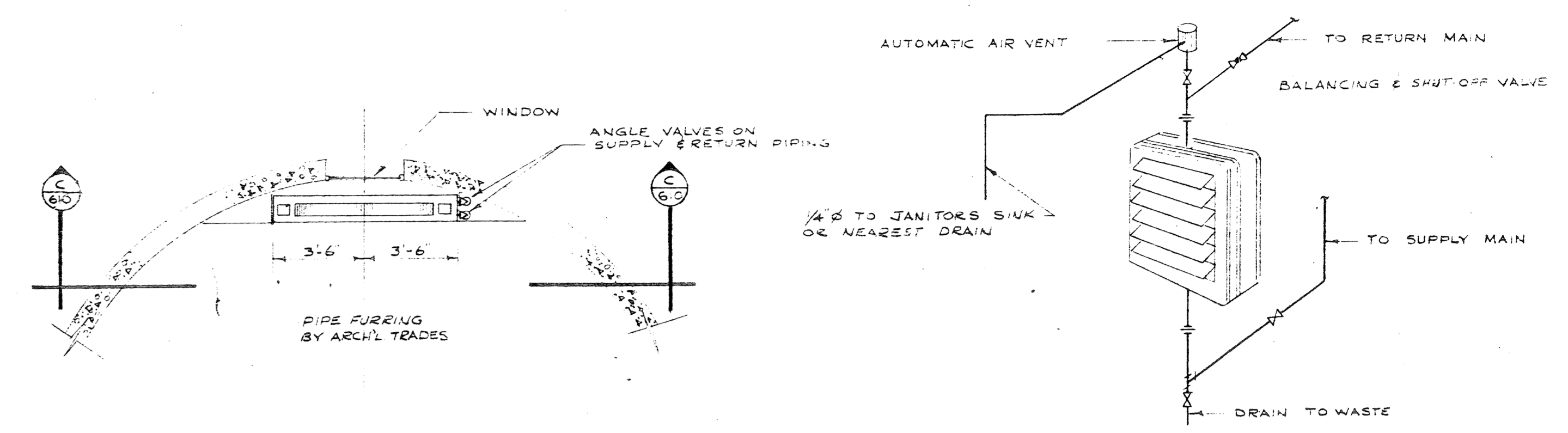


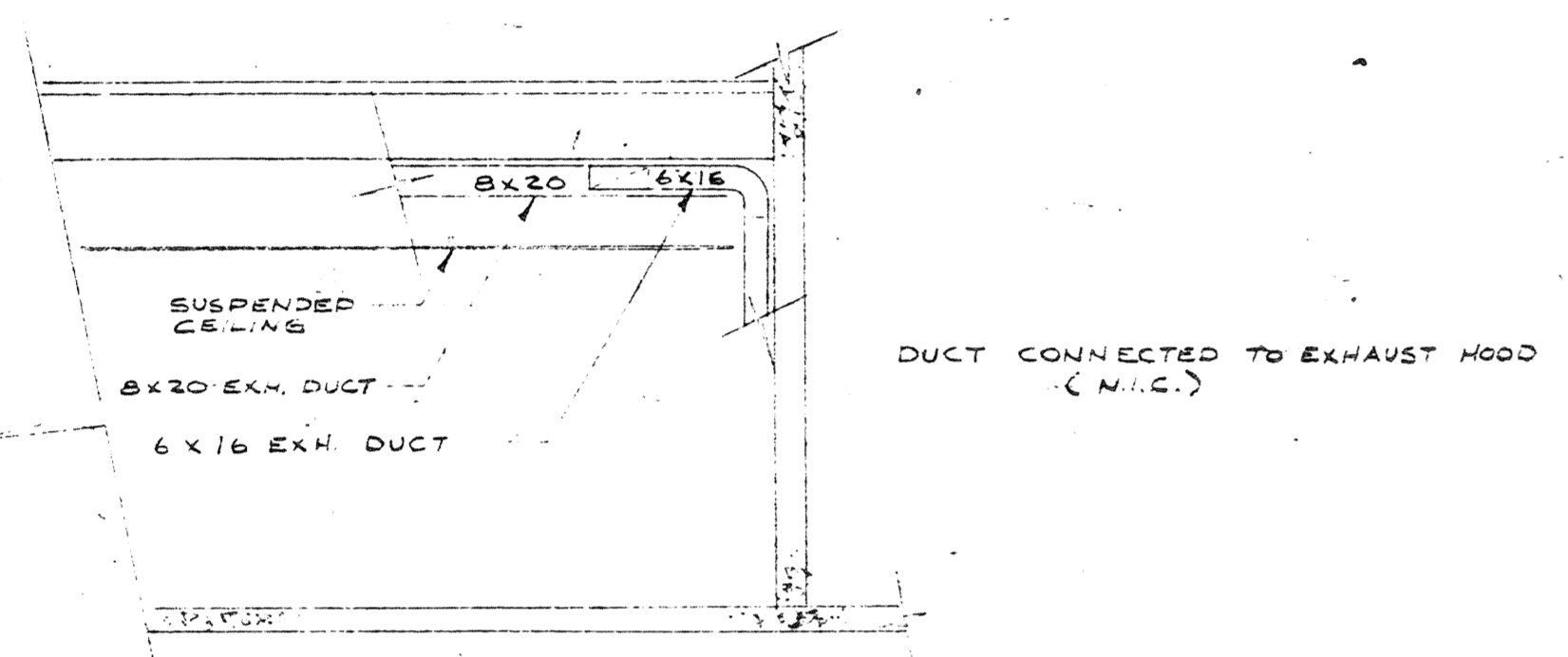
PLAN OF KITCHEN IN OFFICE BUILDING
SCALE 1/4" = 1'-0"



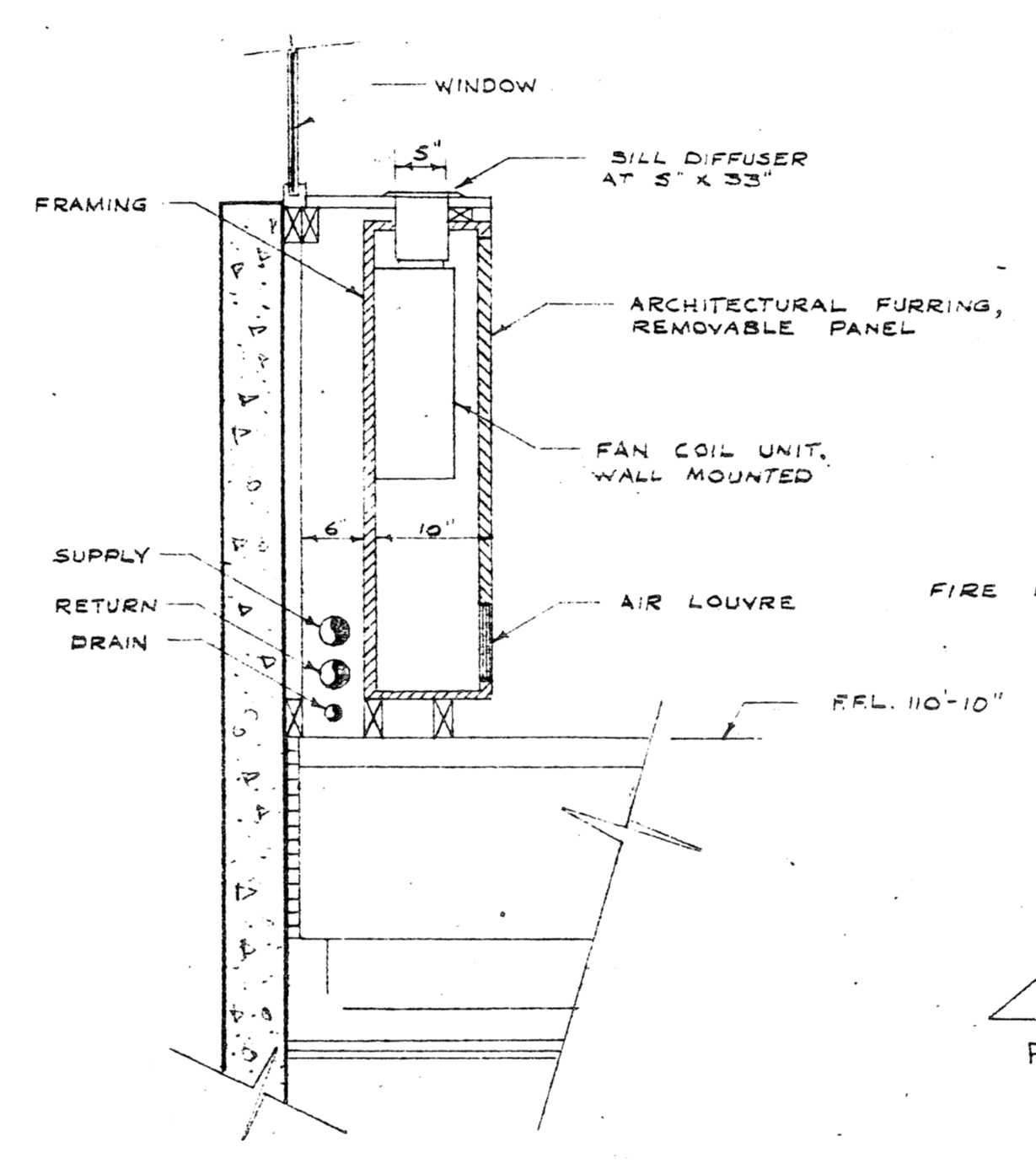
SECTION A-A
SCALE 1/4" = 1'-0"



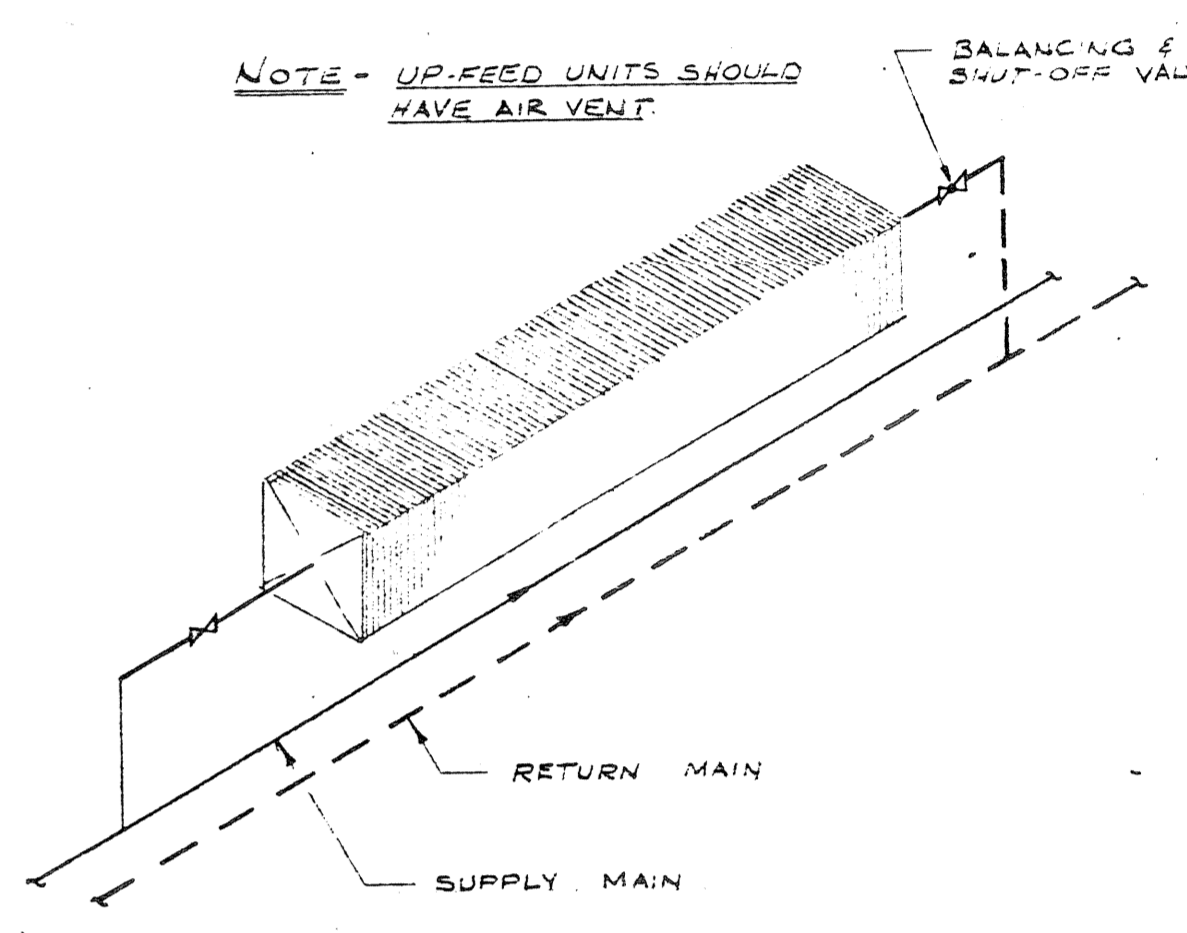
TYPICAL PIPING OF HOT WATER UNIT HEATER
NOT TO SCALE



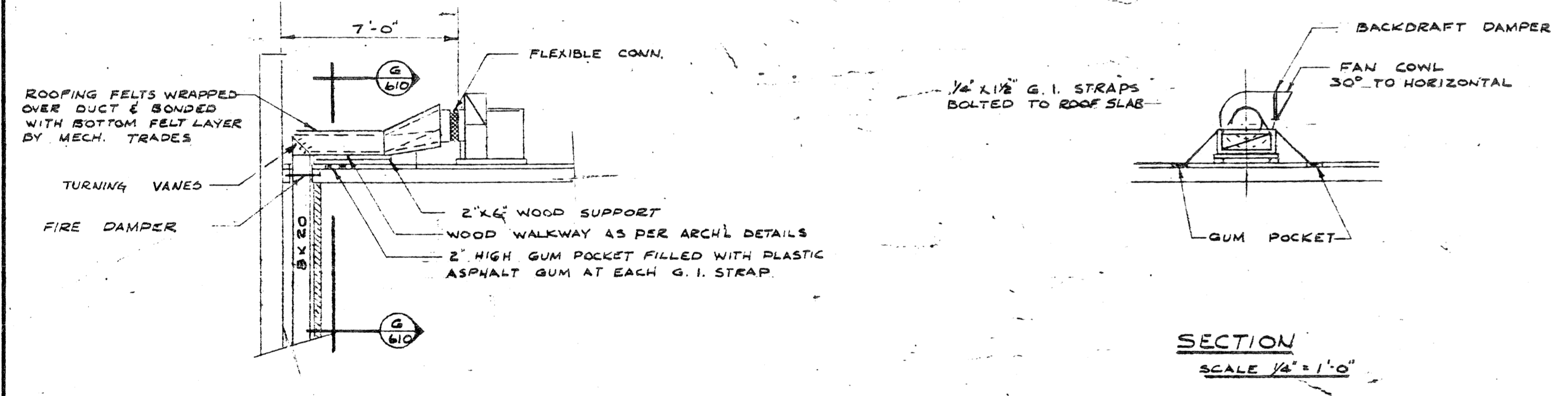
SECTION B-B
SCALE 1/4" = 1'-0"



SECTION C-C
SCALE 1/4" = 1'-0"

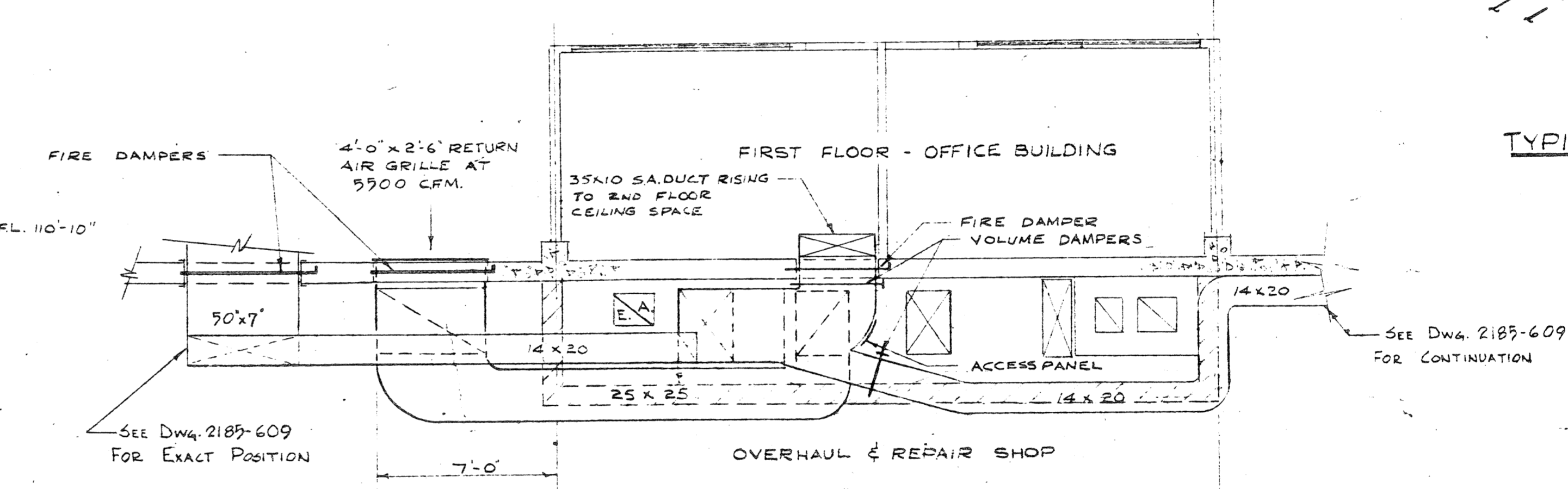


TYPICAL PIPING OF HOT WATER CONVECTOR
NOT TO SCALE

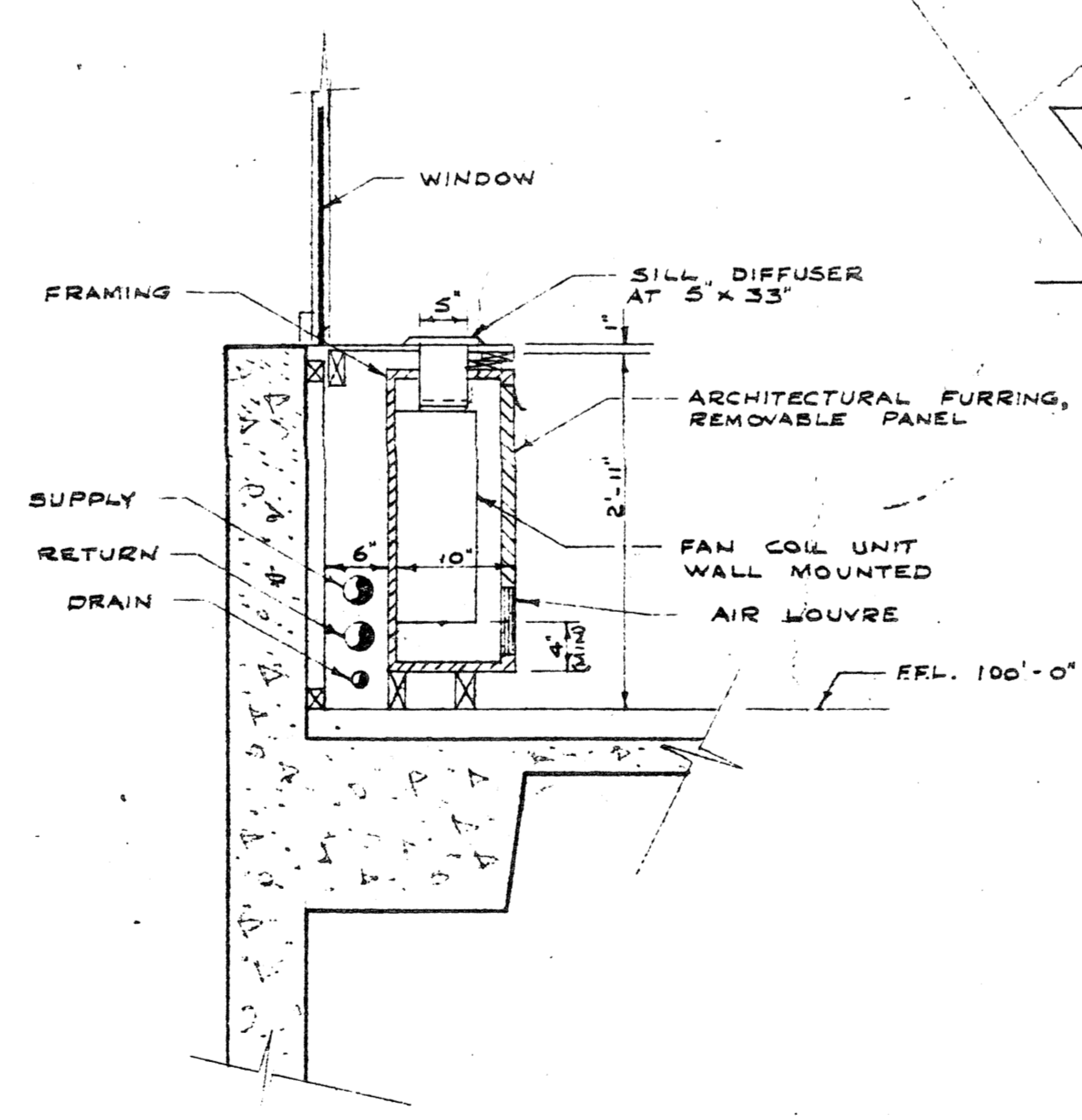


ELEVATION OF KITCHEN EXHAUST FAN ON ROOF
SCALE 1/4" = 1'-0"

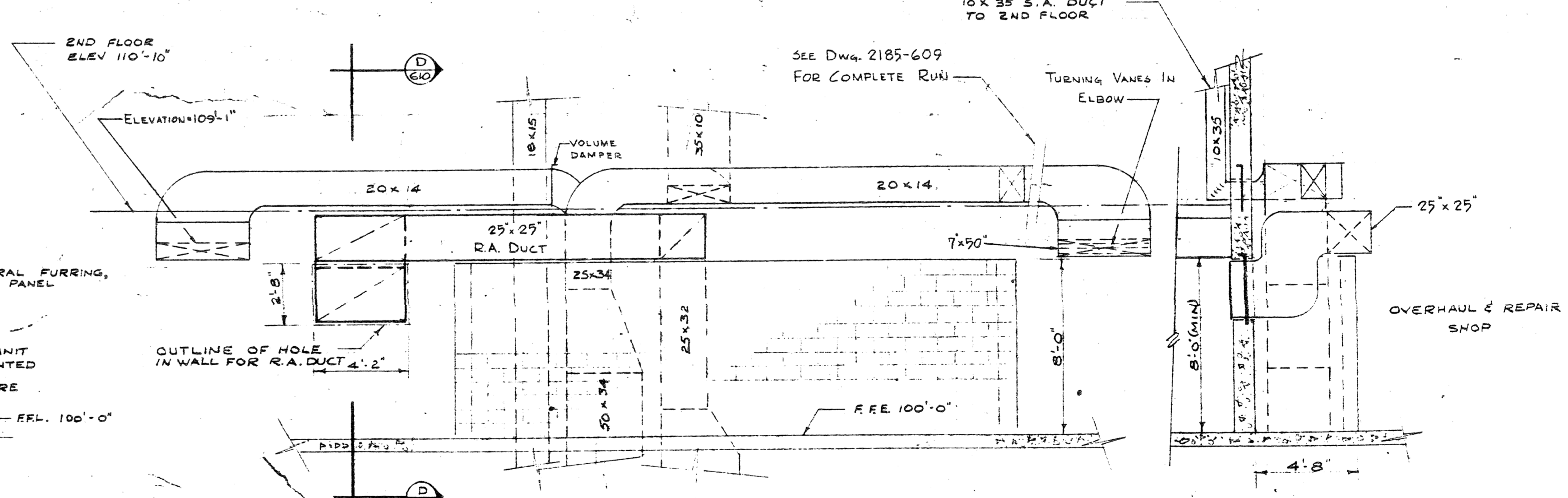
2ND FLOOR
SCALE 3/4" = 1'-0"



PLAN
SCALE 1/4" = 1'-0"

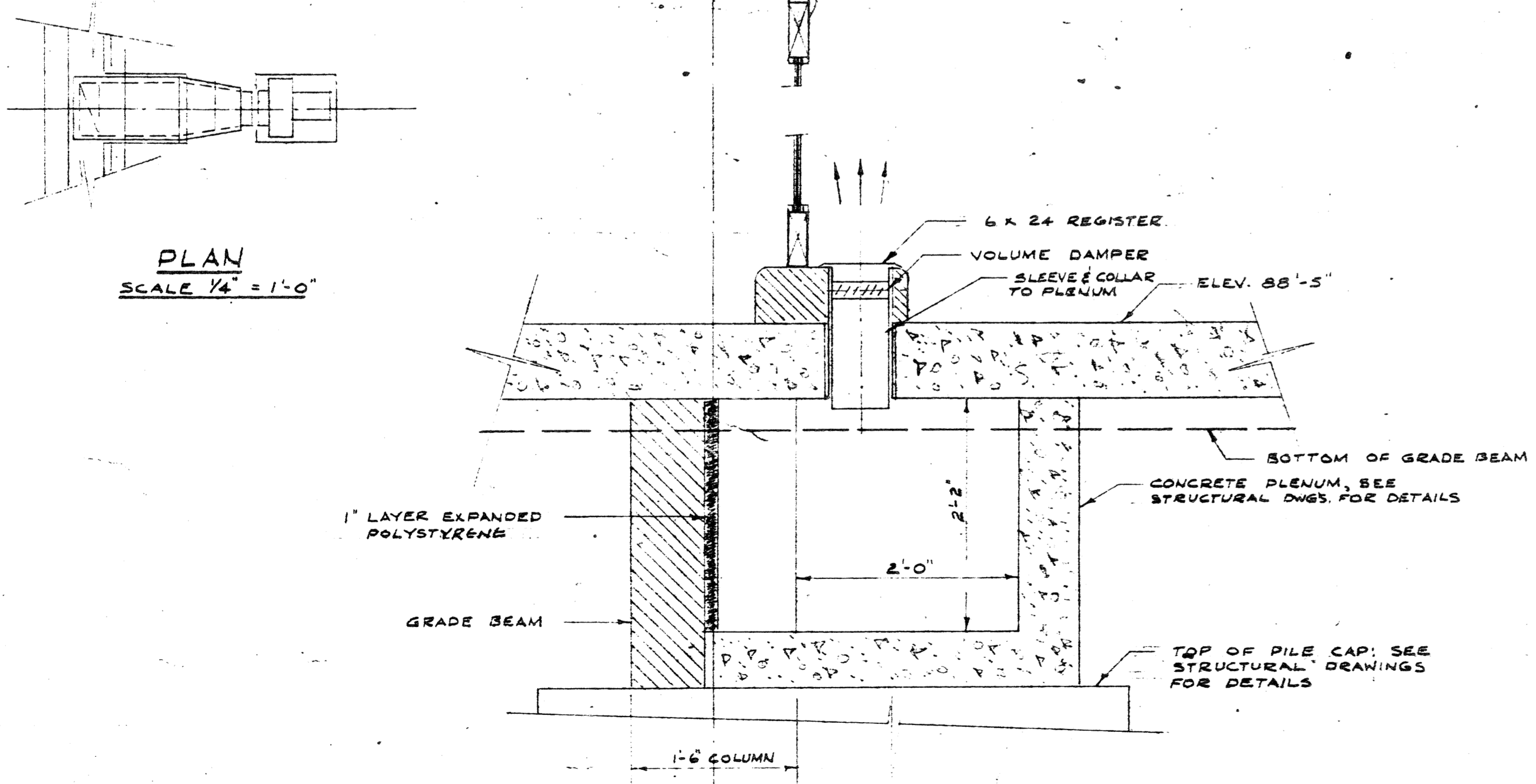


1ST FLOOR
SCALE 3/4" = 1'-0"



ELEVATION
SCALE 1/4" = 1'-0"

SECTION E-E
SCALE 1/4" = 1'-0"



SECTION F-F
SCALE 1" = 1'-0"

SECTION G-G
FURRED FAN COIL DETAILS
NORTH WINDOWS OFFICE BUILDING
SCALE 3/4" = 1'-0"

LAYOUT OF AIR SYSTEMS
FIRST FLOOR - OFFICE BUILDING
SCALE 1/4" = 1'-0"

2185-610

DATE	ISSUE NO.	REV.	DESCRIPTION	DRAWN BY
19/1/68	2	0	FOR TENDER	
20/1/68	1	0	FOR APPROVAL	

ISSUE OR REVISION	

METROPOLITAN CORPORATION OF GREATER WINNIPEG STREETS AND TRANSIT DIVISION	
TRANSIT STORAGE AND SHOP FACILITIES	
ADMINISTRATION BUILDING	
HEATING, VENTILATING & AIR CONDITIONING - DETAILS	
CONSULTING PROFESSIONAL ENGINEERS A. D. MARGISON AND ASSOCIATES LIMITED 155 LESLIE STREET, 2ND FLOOR, WINNIPEG, MANITOBA	ARCHITECTS Walsman Ross + Blashforth Coop Gilmore Hanna 10 HOWARD STREET, WINNIPEG, MANITOBA
APPROVED: <i>[Signature]</i> DEPUTY DIRECTOR OF STREETS AND TRANSIT	DRAWN BY: <i>[Signature]</i> CHECKED: <i>[Signature]</i> DATE: AUGUST '67
LICENSED TO PRACTICE IN THE PROVINCE OF MANITOBA Licence Expires 30 Jan 1968	SCALE: AS SHOWN DRAWING NO.: 2185-610 SHEET NO.: MECHANICAL