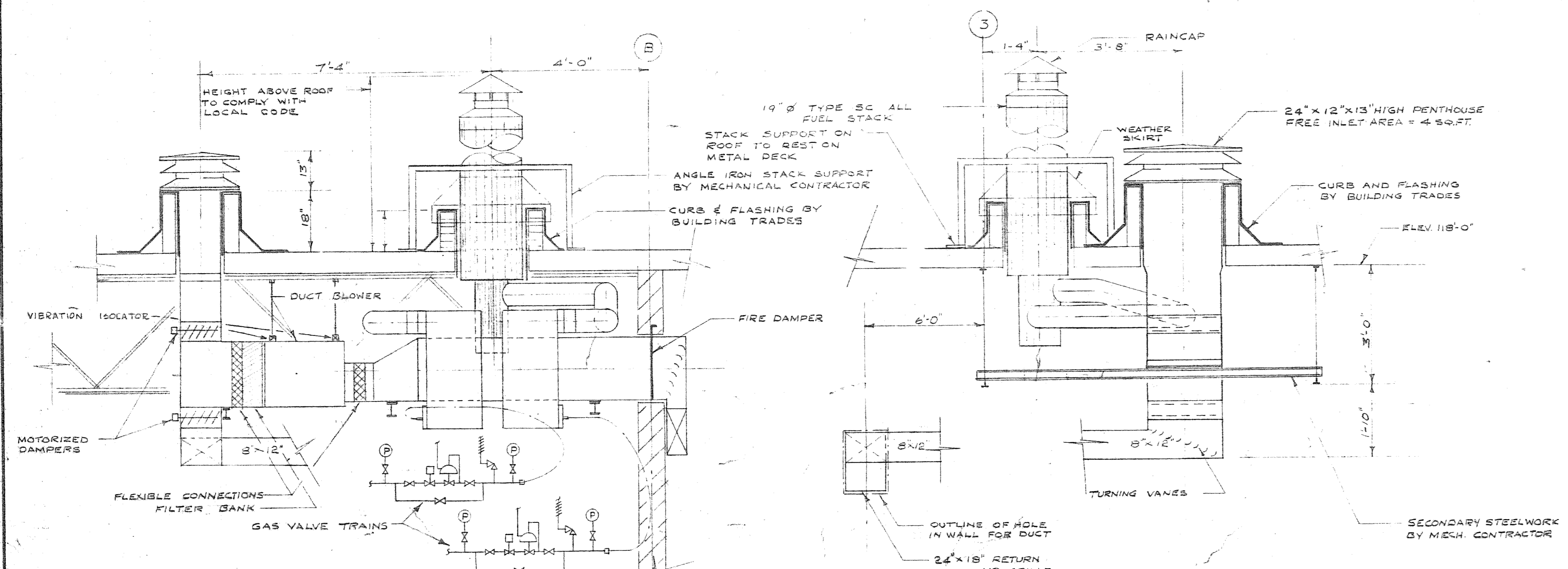
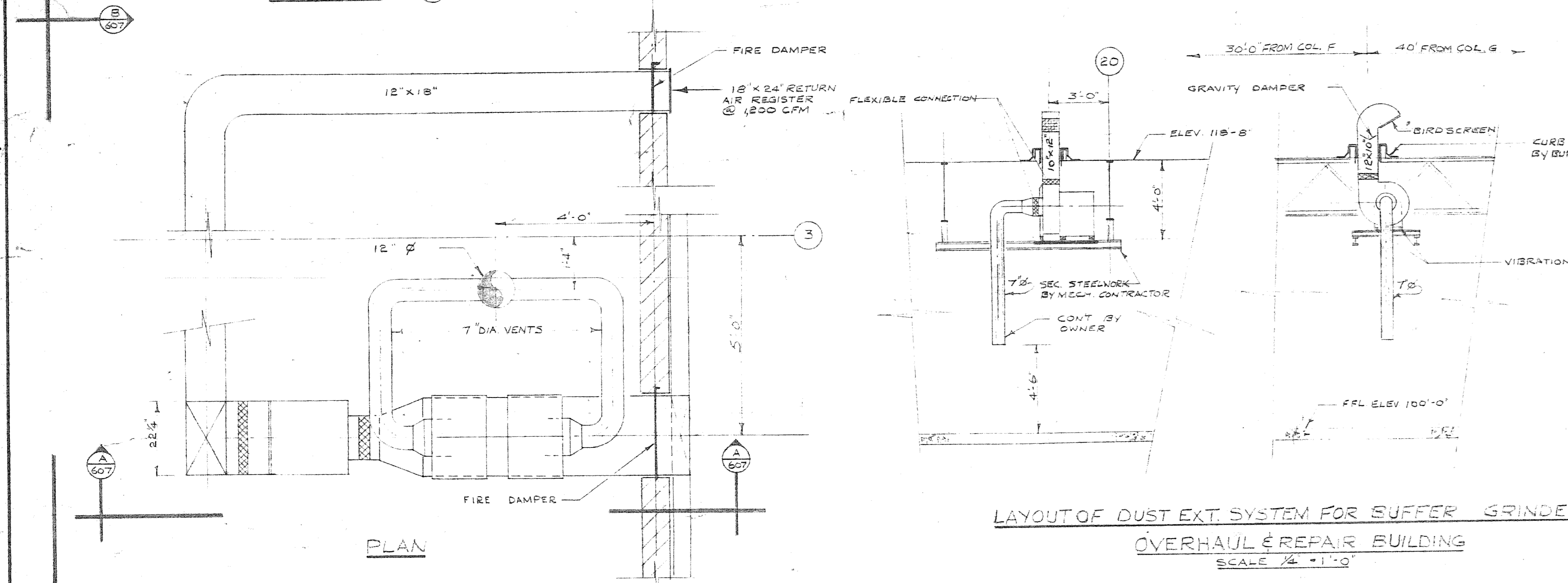


LAYOUT OF MAKE-UP AIR UNIT FOR WELDING BOOTHS
OVERHAUL & REPAIR BUILDING
SCALE 1/2" = 1'-0"

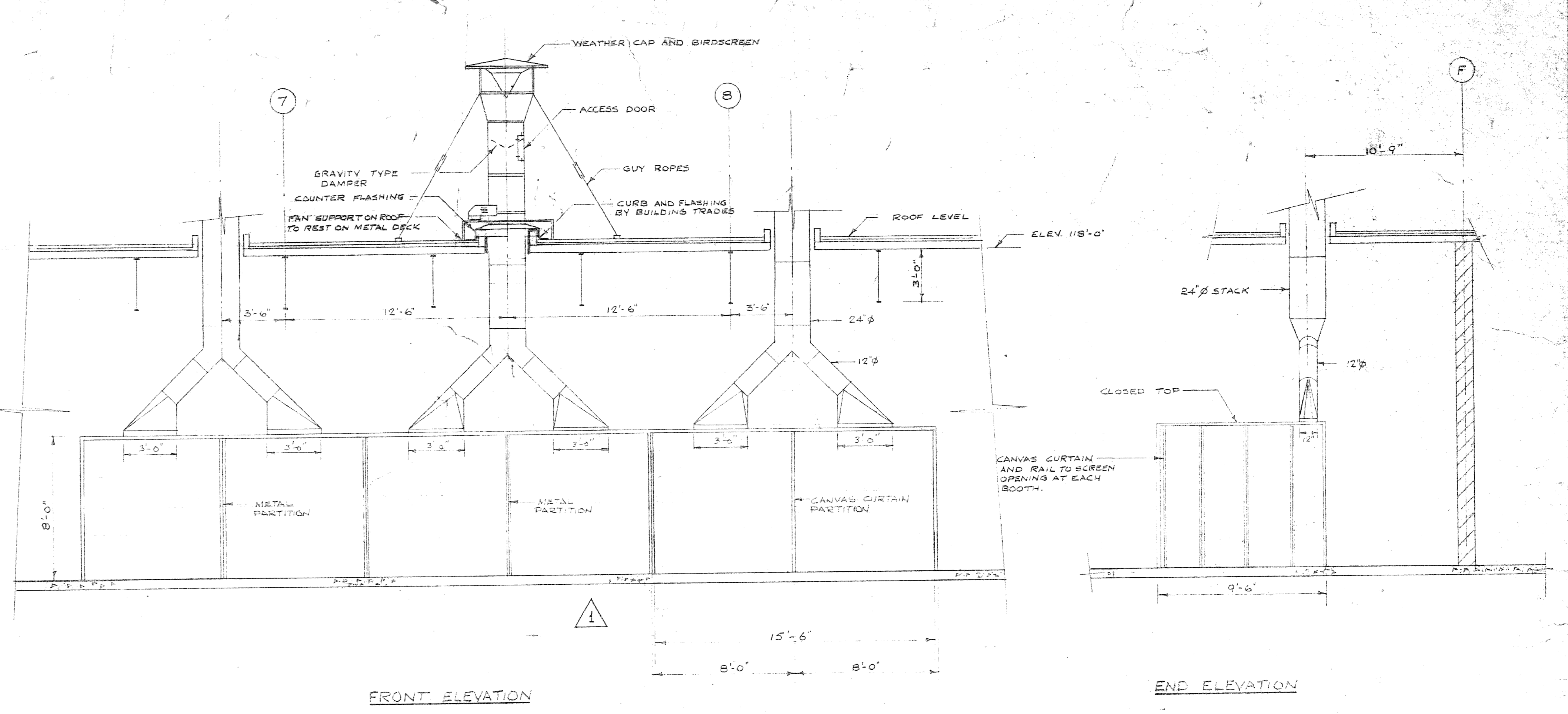


SECTION A-A

SECTION B-B



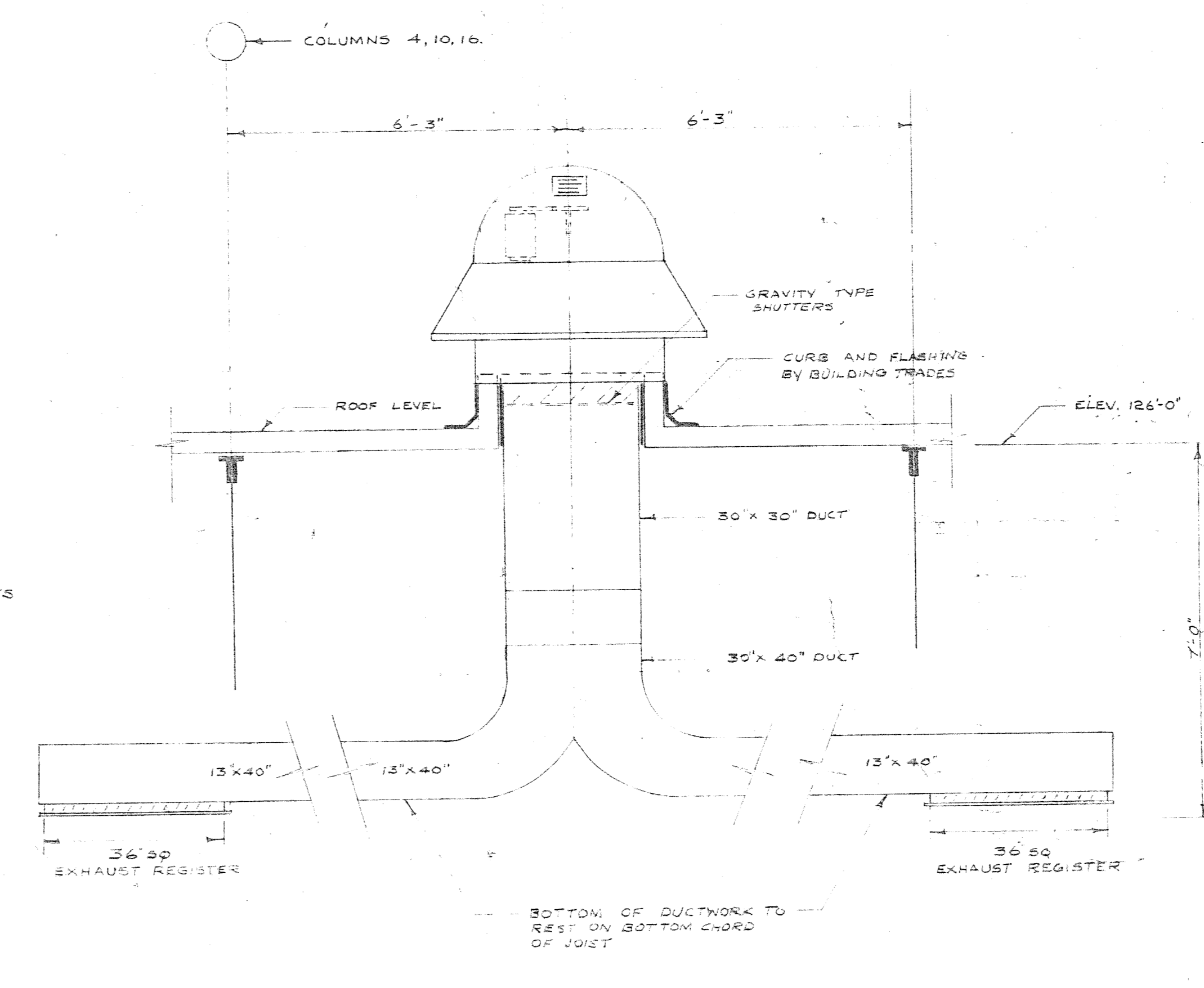
LAYOUT OF DUST EXT SYSTEM FOR SANDER
OVERHAUL & REPAIR BUILDING
SCALE 1/2" = 1'-0"



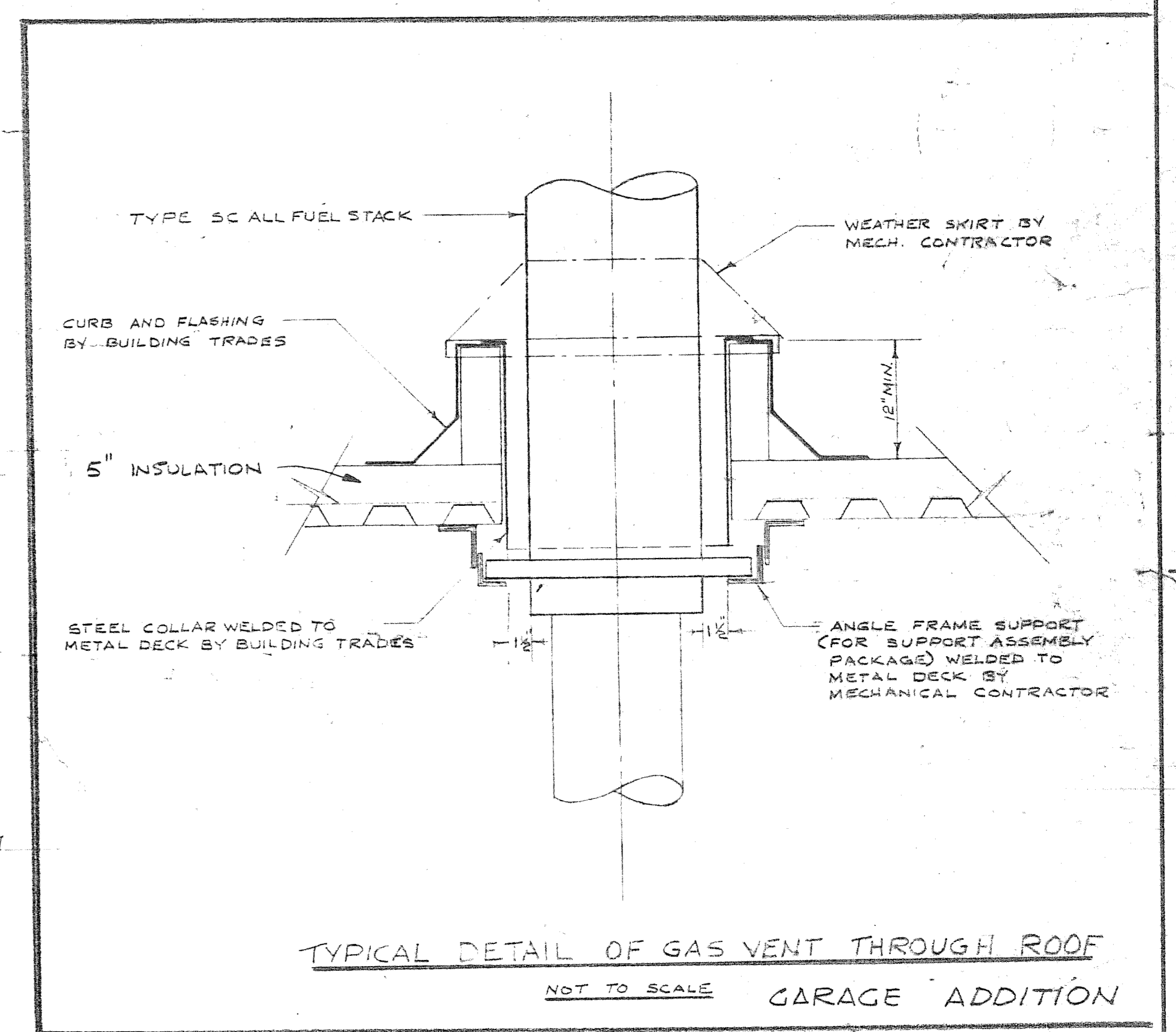
FRONT ELEVATION

END ELEVATION

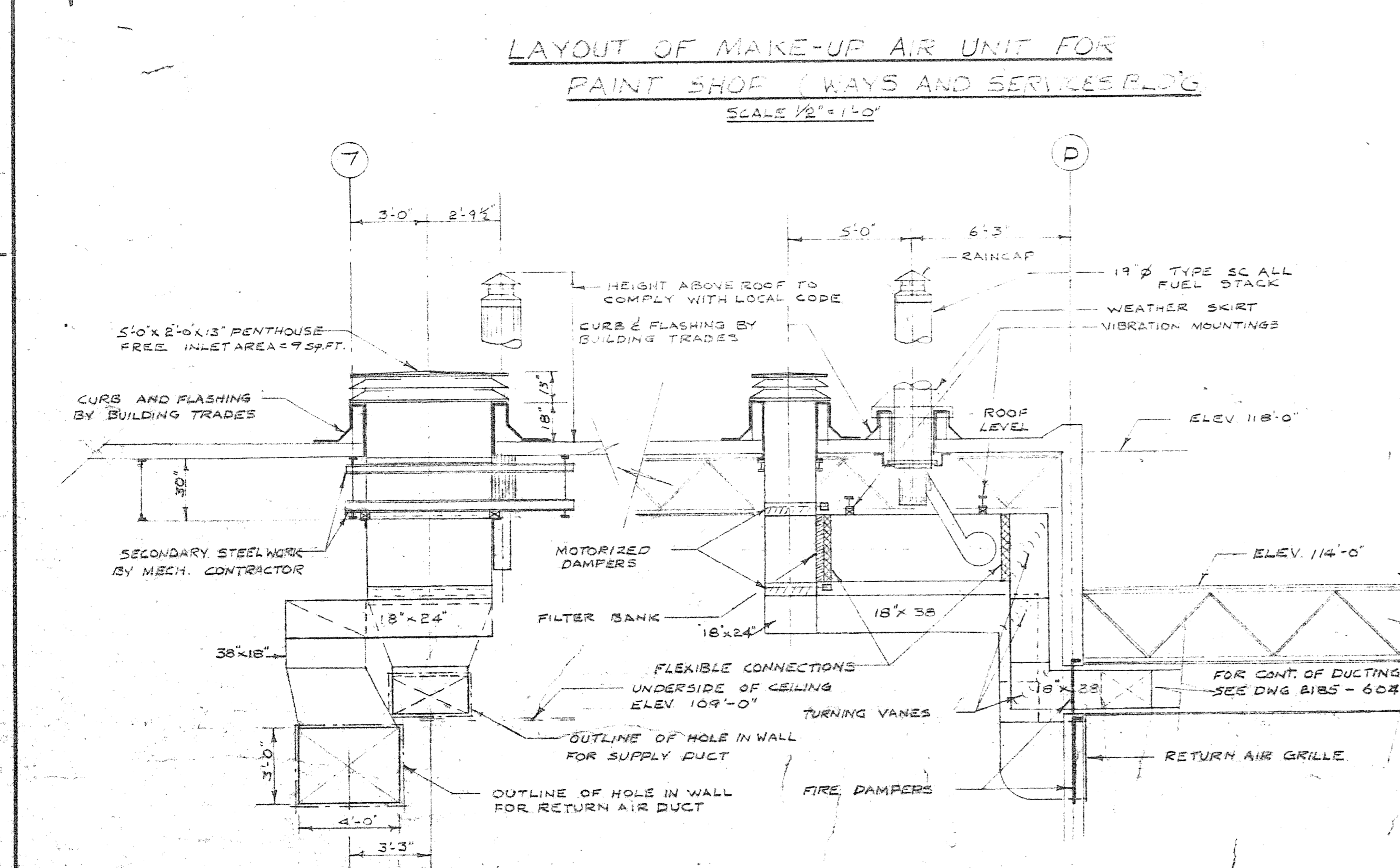
WELDING BOOTHS VENTILATION ARRANGEMENT
OVERHAUL & REPAIR BUILDING
SCALE 1/4" = 1'-0"



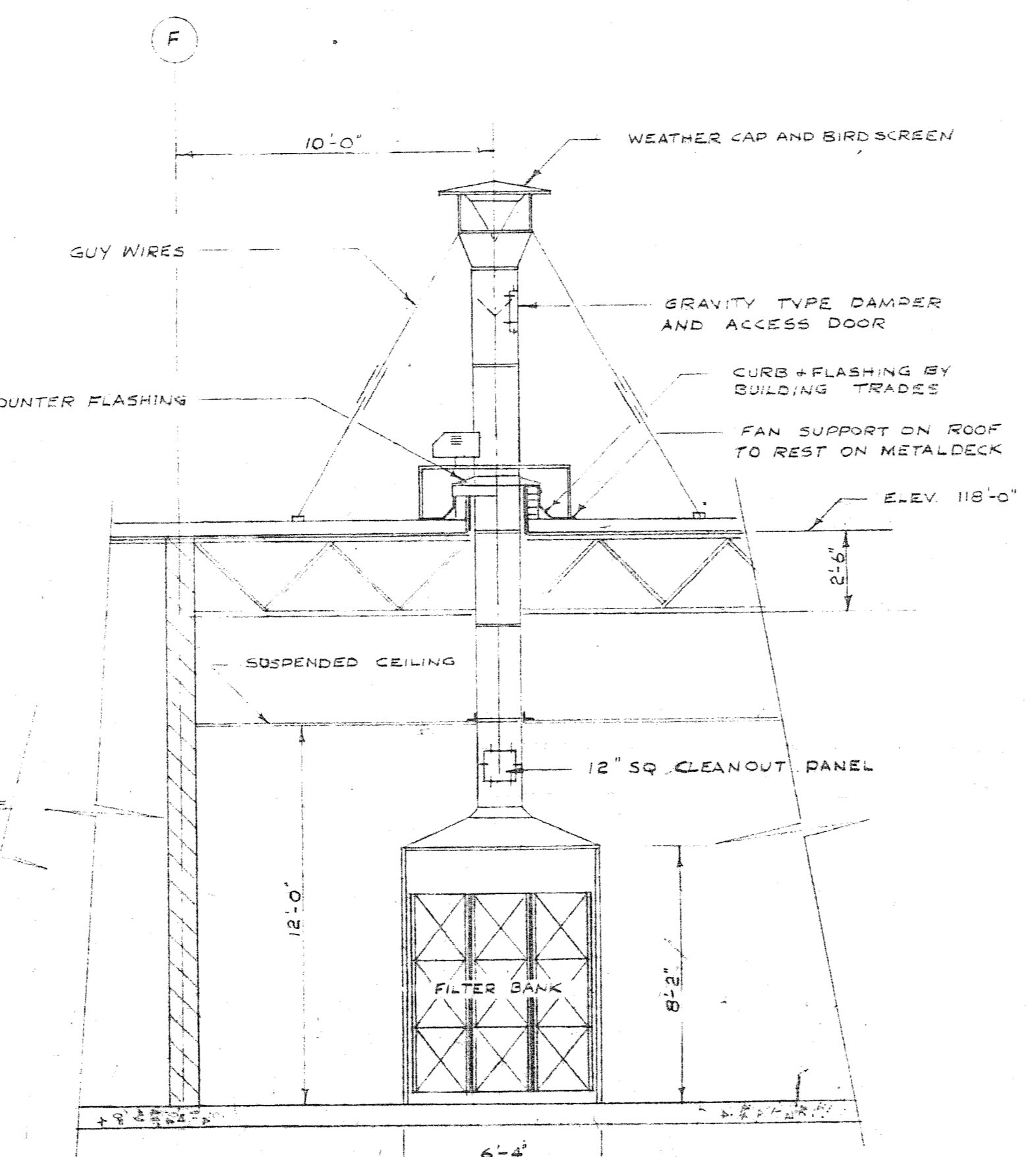
LAYOUT OF ROOF VENTILATORS AND DUCTING OF
NORTH SIDE OF HIGH BAY
OVERHAUL & REPAIR BUILDING
SCALE 1/2" = 1'-0"



TYPICAL DETAIL OF GAS VENT THROUGH ROOF
NOT TO SCALE GARAGE ADDITION

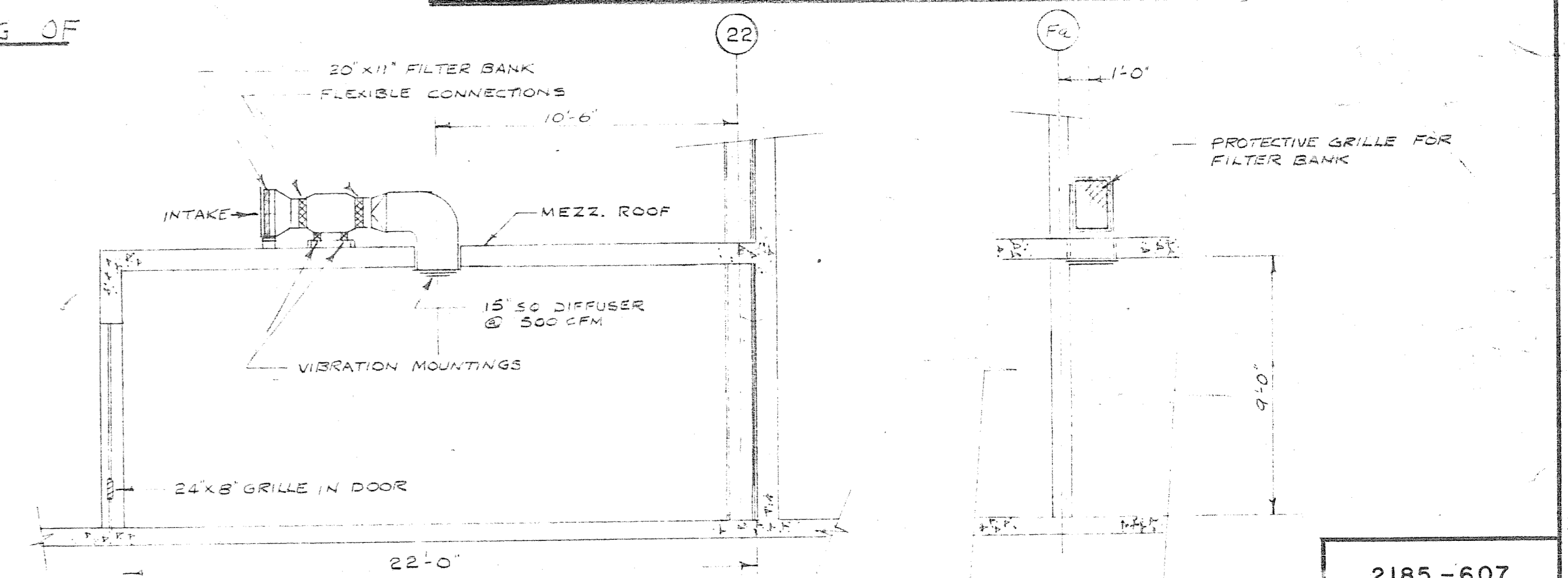


LAYOUT OF MAKE-UP AIR UNIT FOR LUNCH ROOM
WAYS & SERVICES BUILDING
SCALE 1/2" = 1'-0"



ELEVATION

LAYOUT OF POLE PAINTING SPRAY BOOTH
OVERHAUL & REPAIR BUILDING
SCALE 1/2" = 1'-0"



LAYOUT OF VENTILATION FOR INSPECTOR ROOM
OVERHAUL & REPAIR BUILDING
SCALE 1/4" = 1'-0"

MAY 1977

A. D. MARGISON ASSOCIATES LTD.
CONSULTING PROFESSIONAL ENGINEERS
SUITE 308 - 1300 YONGE STREET
TORONTO, ONTARIO MAT 1X2

NUMBER TEN ARCHITECTURAL GROUP
ARCHITECTS & PLANNERS - 1000 BAYVIEW AVE. TORONTO, ONT.

APPROVED: [Signature]

DATE	REV.	DESCRIPTION	DRAWN BY
1977/05	0	FOR APPROVAL	
1977/08	2	FOR TENDER	
1973/04	3	FOR CONSTRUCTION	
1972/04	4	WELDING BOOTH REVISED	
24/7/67	5	AS BUILT	
1977/07	6	GARAGE ADDITION - FOR TENDER	R.M.S.C.

ISSUE OR REVISION

METROPOLITAN CORPORATION OF GREATER WINNIPEG
STREETS AND TRANSIT DIVISION

TRANSIT STORAGE AND SHOP FACILITIES

HEATING & VENTILATING - DETAILS

CONSULTING PROFESSIONAL ENGINEERS
A. D. MARGISON AND ASSOCIATES LIMITED
1155 LESLIE STREET, DON MILLS, ONTARIO

ARCHITECTS
Waisman Ross + Blankstein Coop Gillmor Hanna
10 DONALD STREET, WINNIPEG, MANITOBA

APPROVED: [Signature]

DATE: AUGUST '67

SCALE: AS SHOWN

DRAWING NO.: 2185-607

MATERIAL: MECHANICAL

LICENSED TO PRACTICE IN THE PROVINCE OF MANITOBA
MANITOBA LICENSE 10 JAN. 1976

2185-607