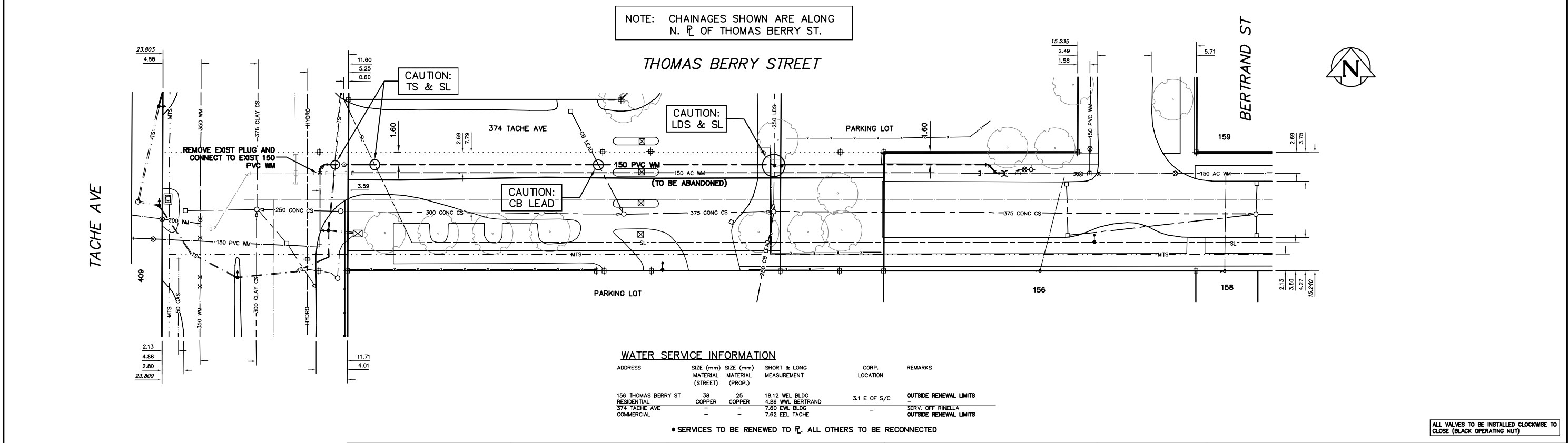


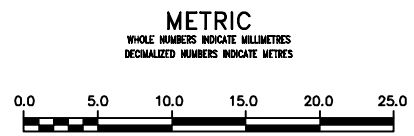
NOTE: CHAINAGES SHOWN ARE ALONG N. R. OF THOMAS BERRY ST.



WATER SERVICE INFORMATION

ADDRESS	SIZE (mm) MATERIAL (STREET)	SIZE (mm) MATERIAL (PROP.)	SHORT & LONG MEASUREMENT	CORP. LOCATION	REMARKS
156 THOMAS BERRY ST RESIDENTIAL	38 COPPER	25 COPPER	18.12 WEL BLDG 4.86 WEL BERTRAND	3.1 E OF S/C	OUTSIDE RENEWAL LIMITS
374 TACHE AVE COMMERCIAL	-	-	7.60 EWL BLDG 7.62 EEL TACHE	-	SERV. OFF RINELLA OUTSIDE RENEWAL LIMITS

*SERVICES TO BE RENEWED TO R. ALL OTHERS TO BE RECONNECTED



WARNING
IF POWER EQUIPMENT OR EXPLOSIVES ARE TO BE USED FOR EXCAVATION ON THIS PROJECT THE CONTRACTOR MUST:
1) NOTIFY THE GAS COMPANY OF THE PROPOSED LOCATION OF EXCAVATION.
2) TAKE PRECAUTION TO AVOID DAMAGE TO GAS COMPANY INSTALLATIONS.
SEE PROVINCIAL REGULATION 21072 FOR DETAILS

LOCATION APPROVED UNDERGROUND STRUCTURES
SUPV. U/G STRUCTURES COMMITTEE DATE
NOTE:
LOCATION OF UNDERGROUND STRUCTURES AS SHOWN ARE BASED ON THE BEST INFORMATION AVAILABLE BUT NO GUARANTEE IS GIVEN THAT ALL EXISTING UTILITIES ARE SHOWN OR THAT THE GIVEN LOCATIONS ARE EXACT. CONFIRMATION OF EXISTENCE AND EXACT LOCATION OF ALL SERVICES MUST BE OBTAINED FROM THE INDIVIDUAL UTILITIES BEFORE PROCEEDING WITH CONSTRUCTION.

NO.	REVISIONS	DATE	BY

DESIGNED BY	SC	CHECKED BY	SC
DRAWN BY	CJH	APPROVED BY	KZ
SCALE:	RELEASED FOR CONSTRUCTION		
HORIZONTAL	1:250	K.R. ZUREK	
VERTICAL	1:50	DATE 13.09.19	

ENGINEER'S SEAL
ORIGINAL SIGNED BY S.R.J. COURNOYER 13-09-19
CONSULTANT DRAWING NUMBER

THE CITY OF WINNIPEG
WATER AND WASTE DEPARTMENT
ENGINEERING DIVISION
2013 SUPPLEMENTAL WATER RENEWALS
THOMAS BERRY STREET
TACHE AVENUE TO
BERTRAND STREET
SHEET 10 OF 10
CITY DRAWING NUMBER
D-13313