

0+98.73 EXIST 250X250X150 TEE
 1+00.00 E. PEMBINA HWY
 1+01.65 CONNECT TO EXIST 150 AC WM
 1+03.47 REMOVE EXIST VALVE
 1+04.00 REMOVE EXIST BEND AND INSTALL 150 VALVE
 1+05.60 INSTALL 150-45° BEND
 1+08.52 REMOVE EXIST HYDRANT
 1+08.80 INSTALL HYDRANT (SD-007)
 1+11.10 INSTALL 150X150X150 TEE

14+73.72 REMOVE EXIST HYDRANT AND INSTALL HYDRANT (SD-007)
 14+75.00
 14+75.22 INSTALL 150X150X150 TEE

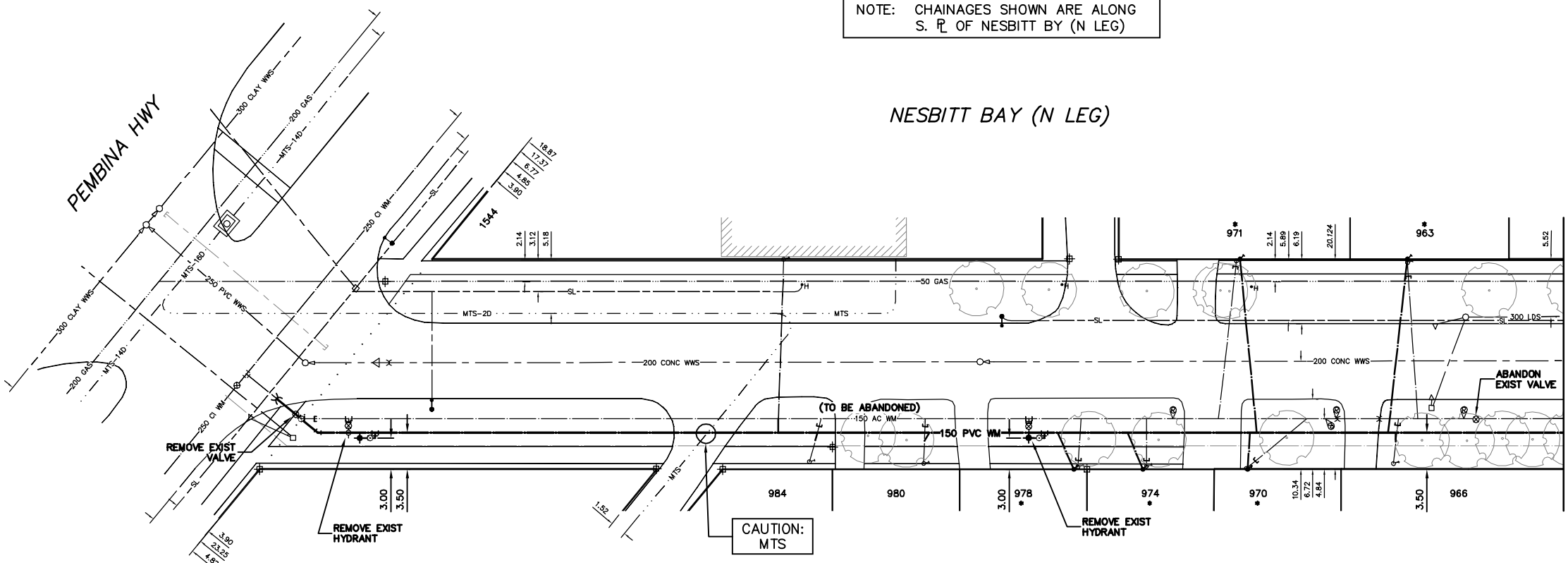
2+16.80 GRADE CHANGE
 2+16.80 ABANDON EXIST VALVE

WATER SERVICE INFORMATION					
ADDRESS	SIZE (mm) MATERIAL (STREET)	SIZE (mm) MATERIAL (PROP.)	SHORT & LONG MEASUREMENT	CORP. LOCATION	REMARKS
963 NESBITT BY RESIDENTIAL	20 COPPER	20 COPPER	3.00 EWL HSE 93.39 EEL PEMBINA	1.1 E OF S/C	RENEW TO R. W/20 COPPER
966 NESBITT BY RESIDENTIAL	20 COPPER	-	1.39 EWL HSE 108.59 EEL PEMBINA	0.4 E OF S/C	RECONNECT SERVICE
970 NESBITT BY RESIDENTIAL	-	-	OPP WL HSE 94.53 EEL PEMBINA	5.9 E OF S/C	RENEW TO R. W/20 COPPER
971 NESBITT BY RESIDENTIAL	20 COPPER	20 COPPER	5.19 EWL HSE 77.05 EEL PEMBINA	1.8 W OF S/C	RENEW TO R. W/20 COPPER
974 NESBITT BY RESIDENTIAL	20 COPPER	20 COPPER	4.34 EWL HSE 84.82 EEL PEMBINA	OPP S/C	RENEW TO R. W/20 COPPER
978 NESBITT BY RESIDENTIAL	20 COPPER	-	1.85 EWL HSE	0.2 E OF S/C	RENEW TO R. W/20 COPPER
980 NESBITT BY RESIDENTIAL	20 COPPER	-	1.95 EWL HSE	0.1 E OF S/C	RECONNECT SERVICE
984 NESBITT BY RESIDENTIAL	20 COPPER	20 COPPER	63.85 EEL PEMBINA 1.59 WEL HSE	1.1 E OF S/C	RECONNECT SERVICE
1544 PEMBINA HWY COMMERCIAL	25 COPPER	25 COPPER	5.96 EWL HSE 33.68 EEL PEMBINA	0.5 W OF S/C	SERV. OFF NESBITT RECONNECT SERVICE

* SERVICES TO BE RENEWED TO R. ALL OTHERS TO BE RECONNECTED

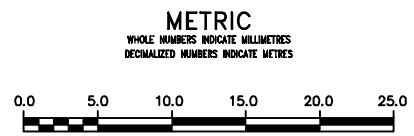
NOTE: CHAINAGES SHOWN ARE ALONG S. R. OF NESBITT BY (N LEG)

NESBITT BAY (N LEG)



2+25 MATCHLINE
 (SEE DWG. D-13309)

ALL VALVES TO BE INSTALLED CLOCKWISE TO CLOSE (BLACK OPERATING NUT)



WARNING
 IF POWER EQUIPMENT OR EXPLOSIVES ARE TO BE USED FOR EXCAVATION ON THIS PROJECT THE CONTRACTOR MUST:
 1) NOTIFY THE GAS COMPANY OF THE PROPOSED LOCATION OF EXCAVATION.
 2) TAKE PRECAUTION TO AVOID DAMAGE TO GAS COMPANY INSTALLATIONS.
 SEE PROVINCIAL REGULATION 21072 FOR DETAILS

LOCATION APPROVED UNDERGROUND STRUCTURES
 SUPV. U/G STRUCTURES COMMITTEE DATE
 NOTE:
 LOCATION OF UNDERGROUND STRUCTURES AS SHOWN ARE BASED ON THE BEST INFORMATION AVAILABLE BUT NO GUARANTEE IS GIVEN THAT ALL EXISTING UTILITIES ARE SHOWN OR THAT THE GIVEN LOCATIONS ARE EXACT. CONFIRMATION OF EXISTENCE AND EXACT LOCATION OF ALL SERVICES MUST BE OBTAINED FROM THE INDIVIDUAL UTILITIES BEFORE PROCEEDING WITH CONSTRUCTION.

B.M. ELEV.	
CONSTRUCTION COMPLETION DATE: YYYY MM DD	
NO.	REVISIONS
DATE	BY

DESIGNED BY	SC	CHECKED BY	SC
DRAWN BY	CJH	APPROVED BY	KZ
SCALE:		RELEASED FOR CONSTRUCTION	
HORIZONTAL	1:250		
VERTICAL	1:50		
DATE	2013 09 19	DATE	13.09.19

ENGINEER'S SEAL
 ORIGINAL SIGNED BY S.R.J. COURNOYER 13-09-19
 CONSULTANT DRAWING NUMBER

THE CITY OF WINNIPEG
 WATER AND WASTE DEPARTMENT
 ENGINEERING DIVISION
 2013 SUPPLEMENTAL WATER RENEWALS
 NESBITT BAY (N LEG)
 PEMBINA HIGHWAY TO 125 E OF PEMBINA HIGHWAY
 SHEET 5 OF 10
 CITY DRAWING NUMBER
 D-13308