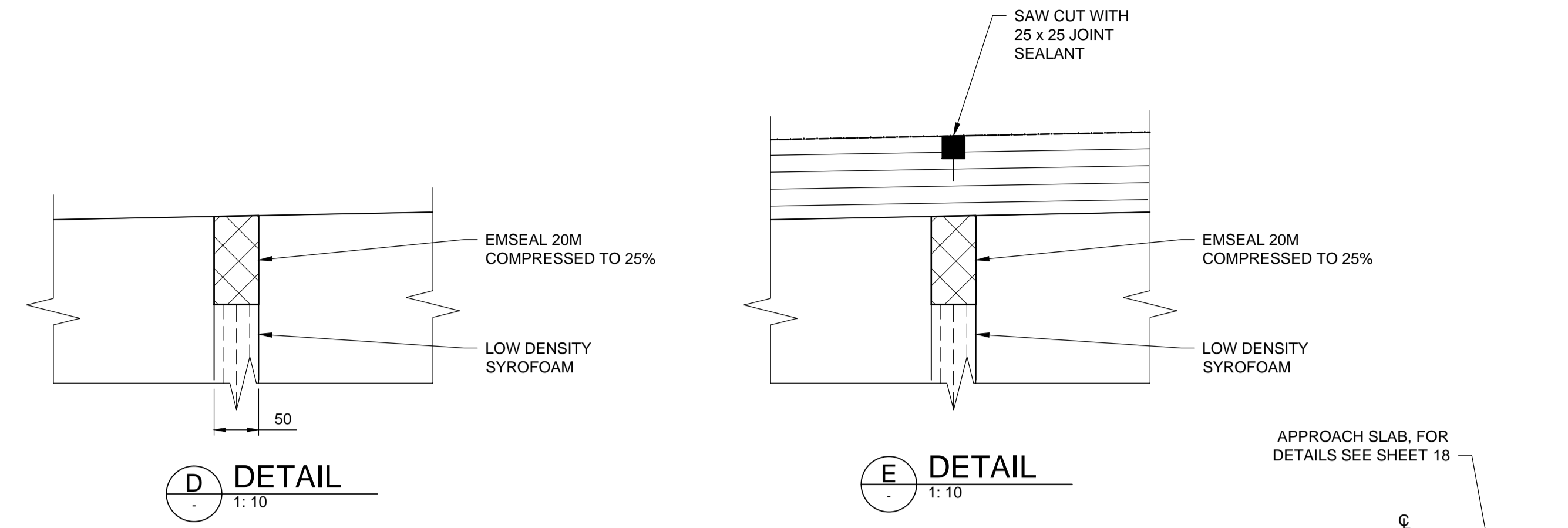


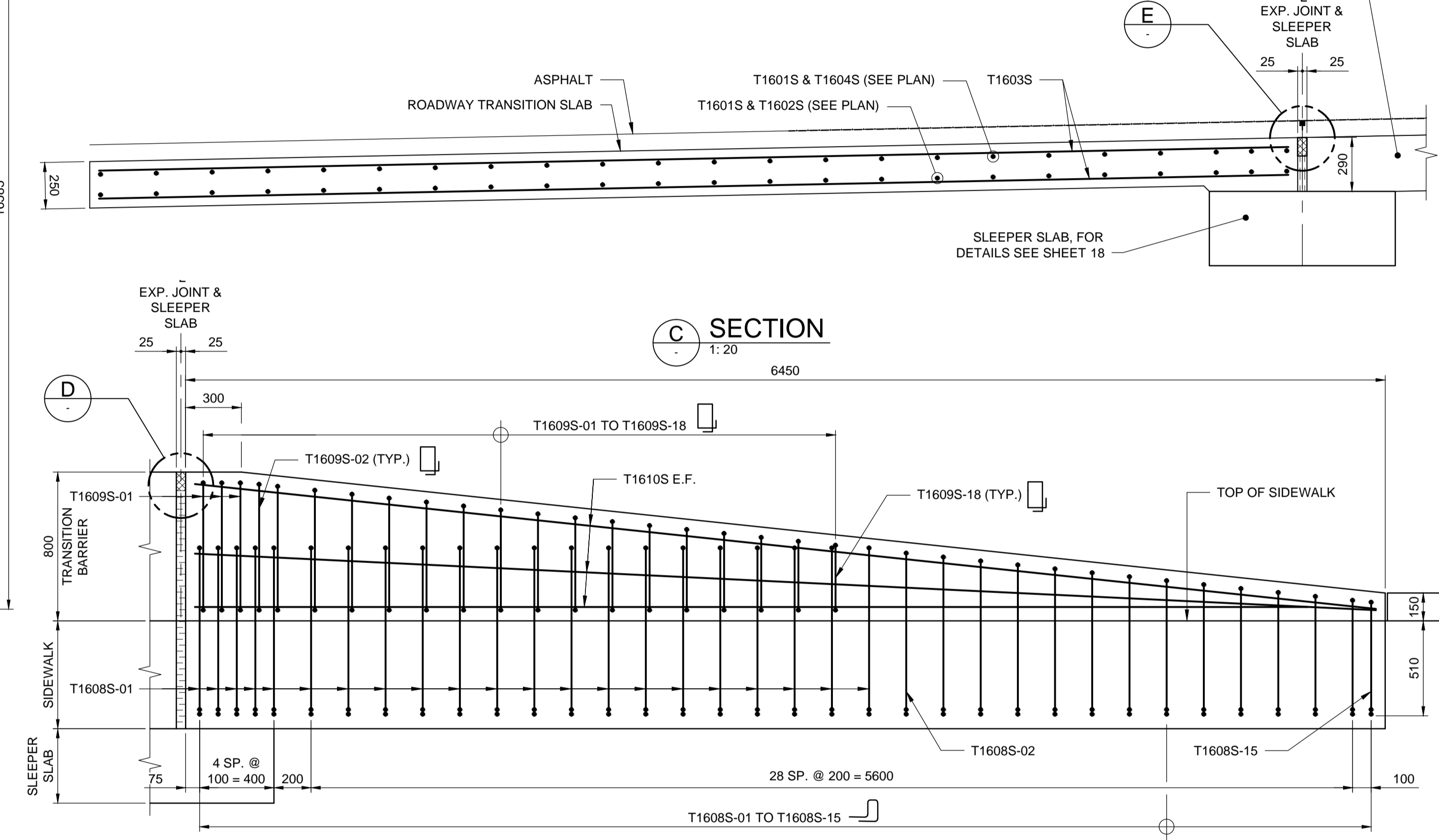
PLAN - SOUTH ROADWAY SLAB
1:75
BOTTOM REINFORCING SHOWN (TYPICAL)

PLAN - NORTH ROADWAY SLAB
1:75
TOP REINFORCING SHOWN (TYPICAL)



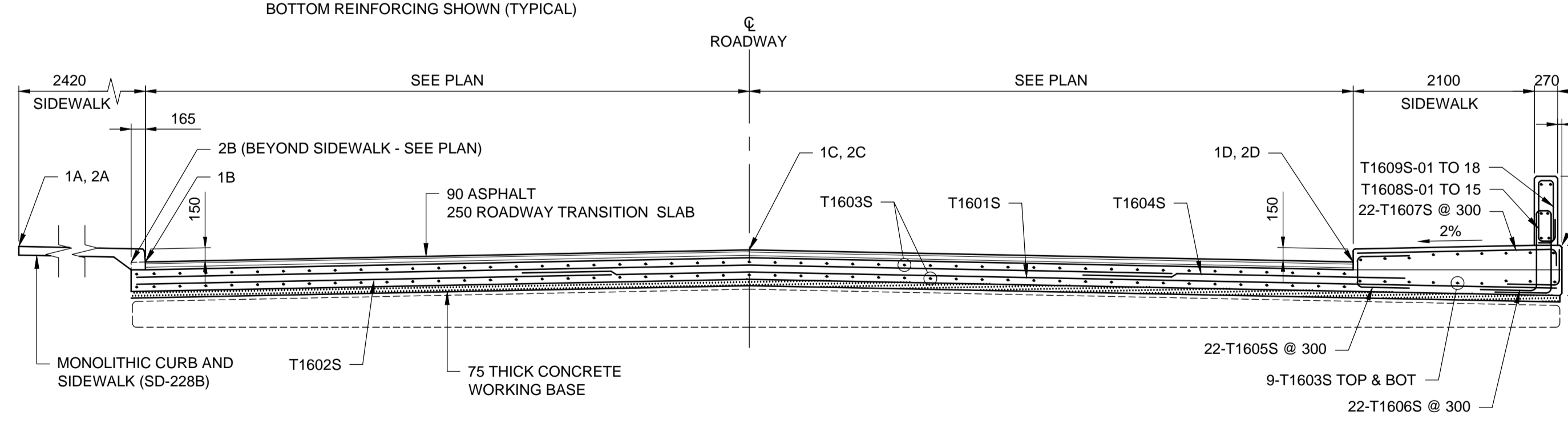
D DETAIL
1:10

E DETAIL
1:10

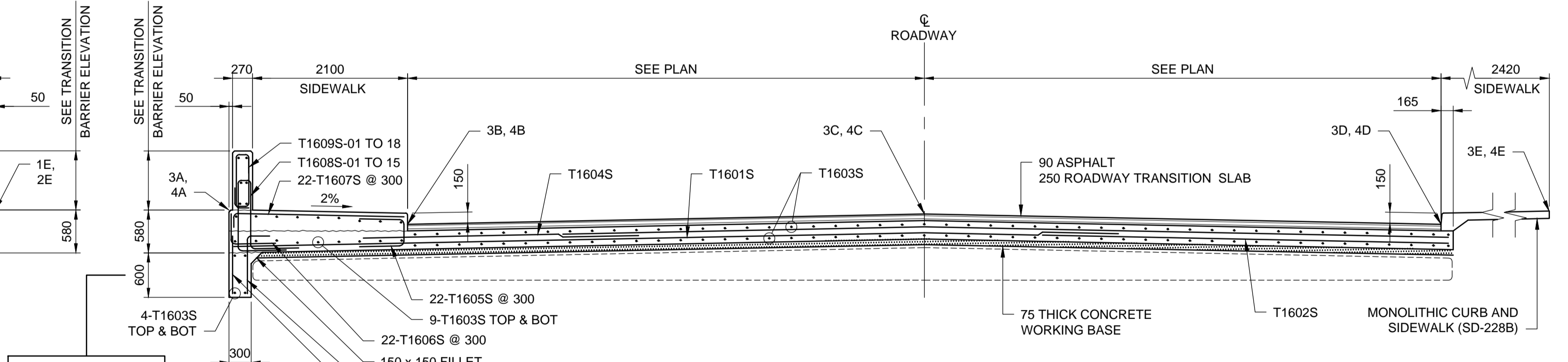


C SECTION
1:20

TRANSITION BARRIER ELEVATION
1:20



A SECTION
1:50



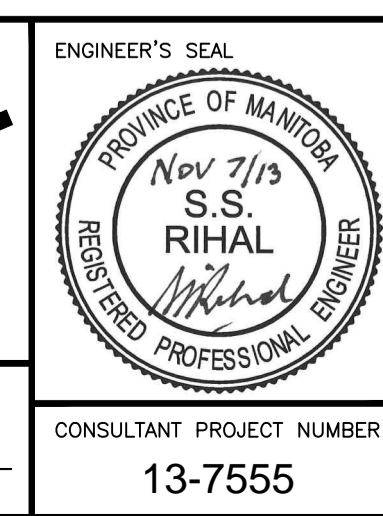
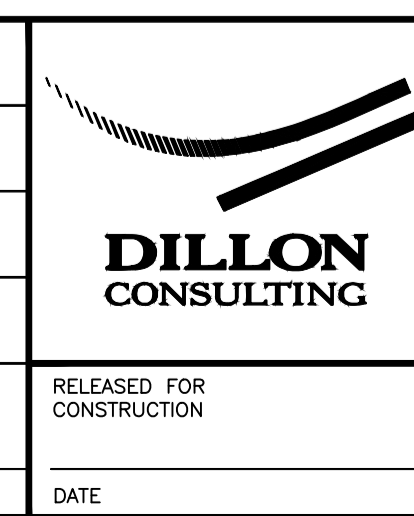
B SECTION
1:50

NOTE:
CUT-OFF WALL
BELOW NORTH
TRANSITION BARRIER
ONLY.

METRIC
WHOLE NUMBERS INDICATE MILLIMETRES
DECIMALIZED NUMBERS INDICATE METRES



B.M. ELEV.	DESIGNED BY	SSR
	DRAWN BY	CGC
	CHECKED BY	CDW
	APPROVED BY	MBL
	HOR. SCALE	AS SHOWN
	VERTICAL SCALE	AS SHOWN
0 ISSUED FOR TENDER	13/11/07	SSR
NO. REVISIONS	DATE	BY
		13/11/07



THE CITY OF WINNIPEG
PUBLIC WORKS DEPARTMENT

RECONSTRUCTION OF THE ST. JAMES STREET BRIDGE OVER OMAND'S CREEK

ROADWAY TRANSITION SLABS

CITY DRAWING NUMBER: B126-13- 21
SHEET: 21 OF 26
CONSULTANT DRAWING NUMBER

CONSULTANT PROJECT NUMBER: 13-7555

G:\CAD\137555\09-Structural\01-Expansion-09-EXPANSION_JT-COM.dwg