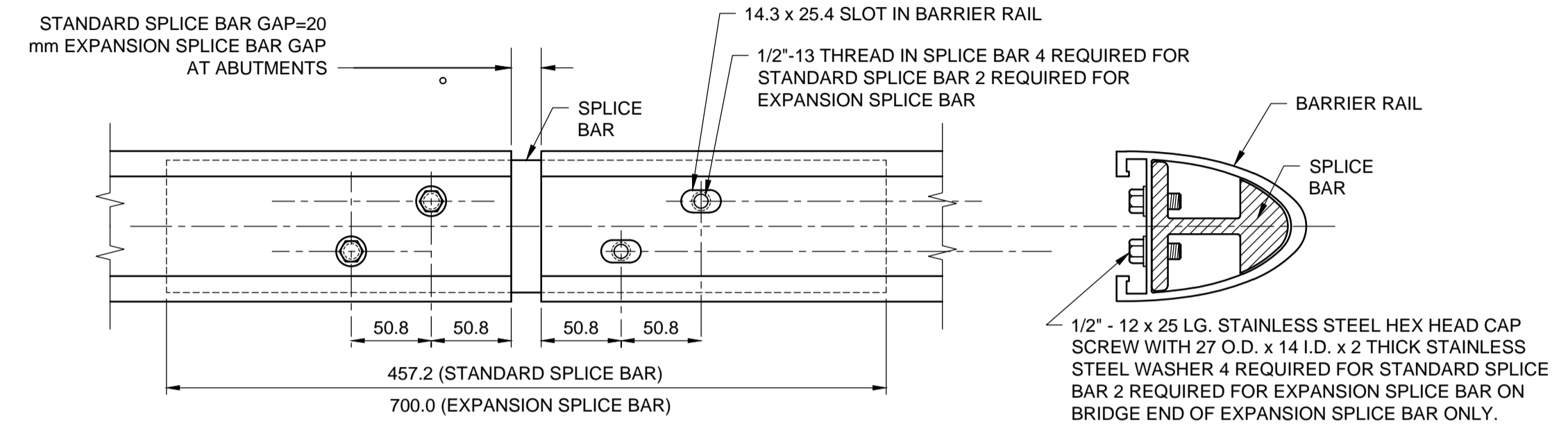
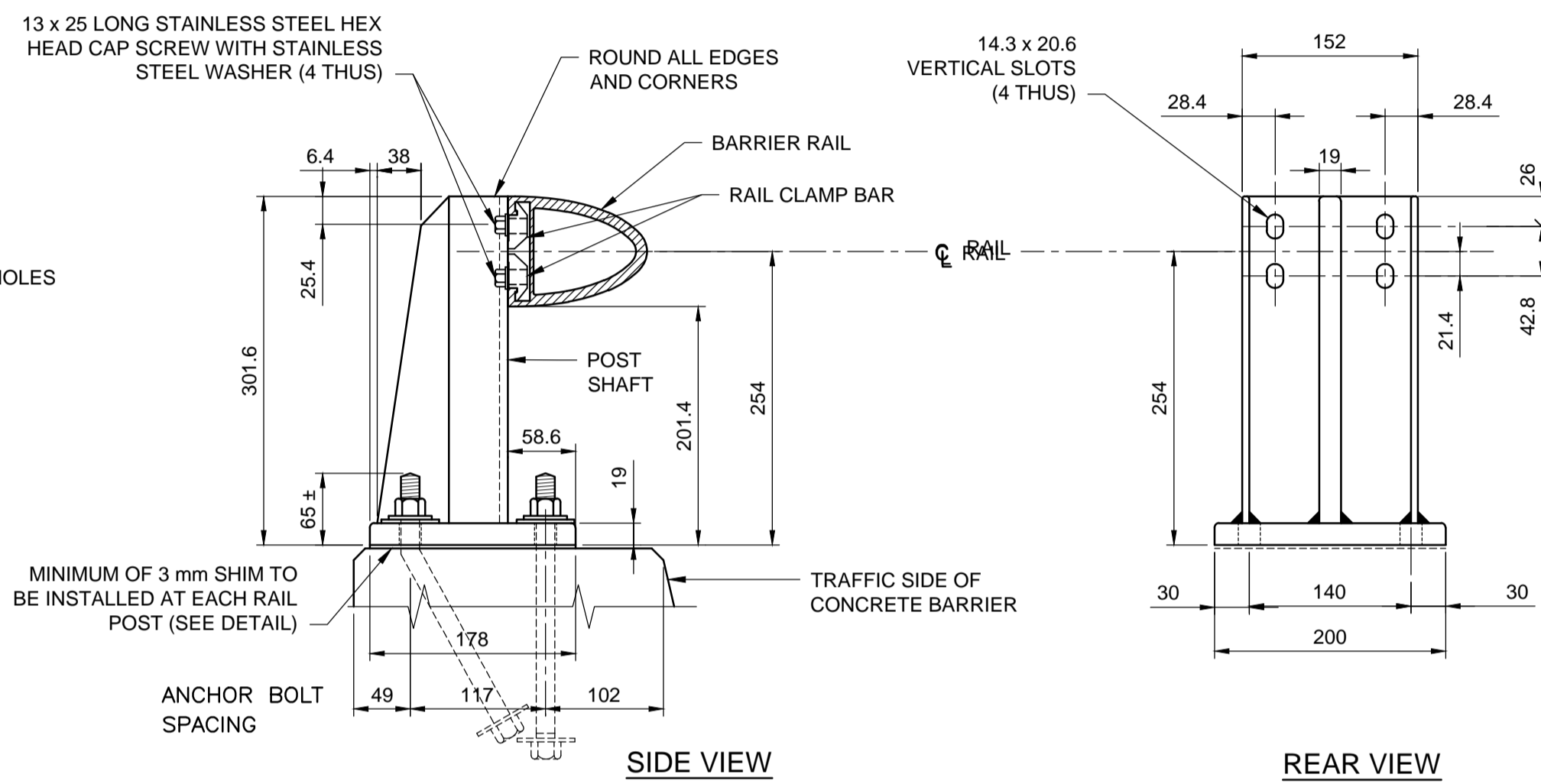
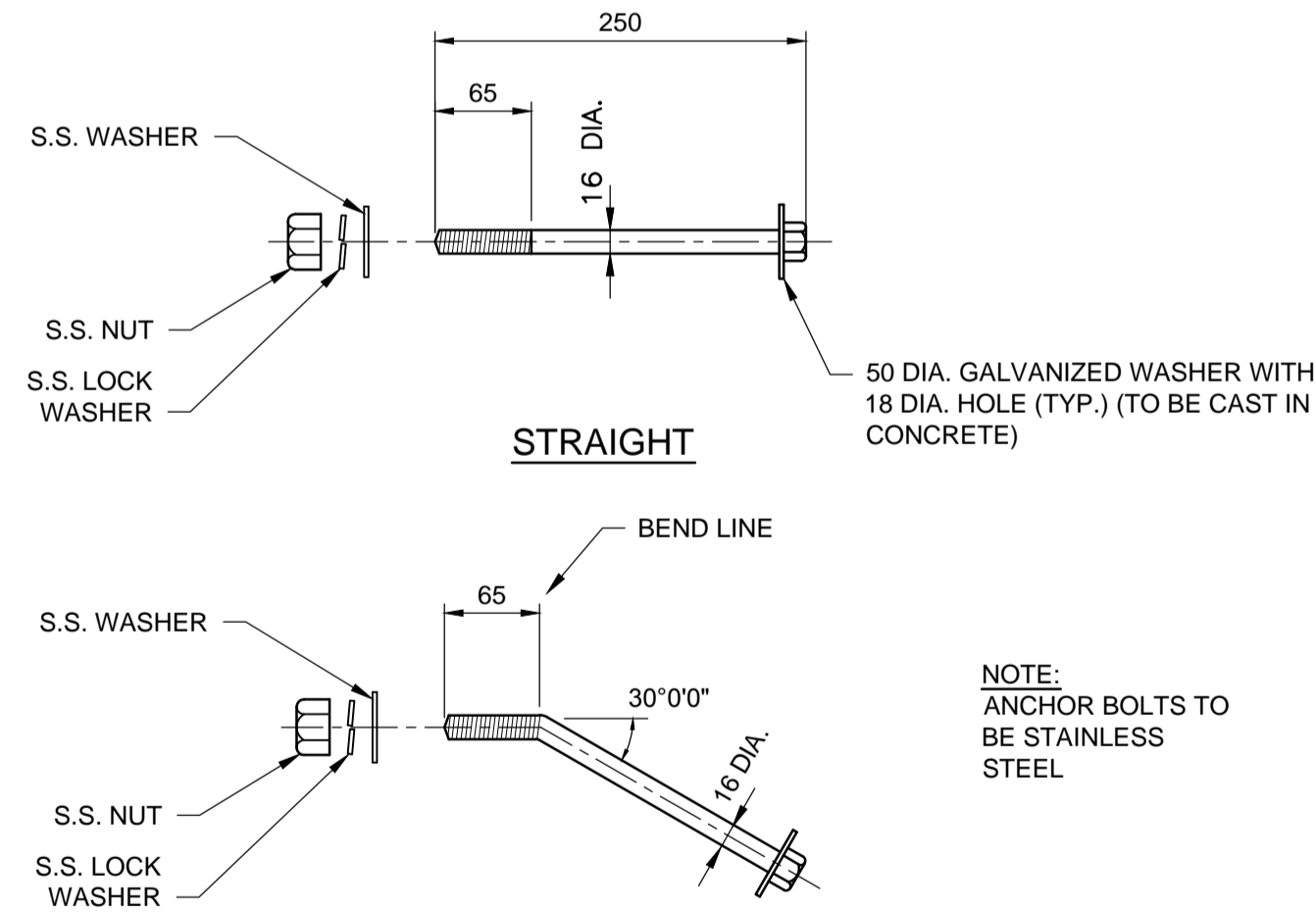
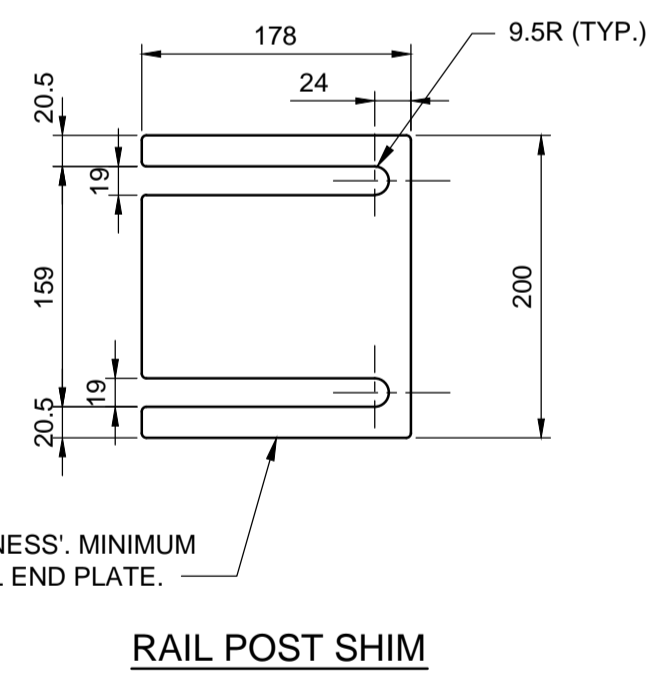
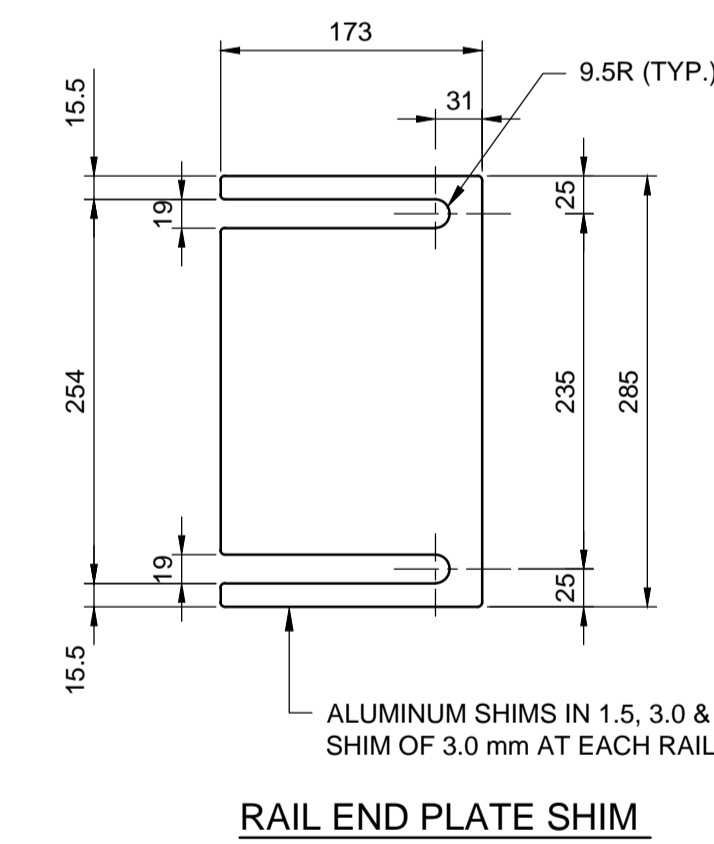
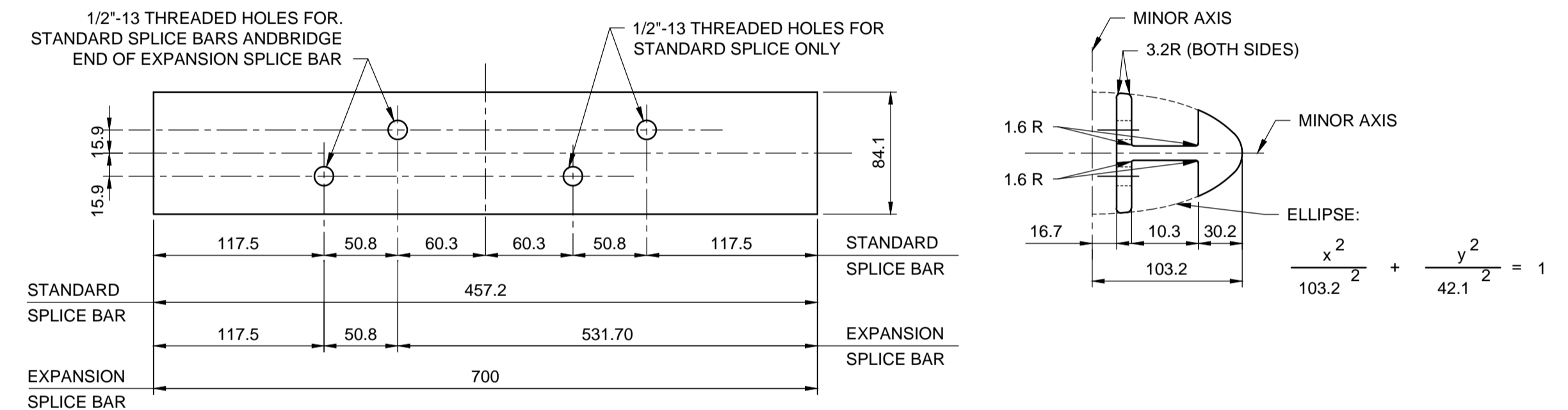


RAIL END SECTION DETAIL

SCALE 1:10
2 REQD 1 LEFT HAND (AS SHOWN)
1 RIGHT HAND



SPLICE BAR TO RAIL ASSEMBLY DETAIL



NOTES:

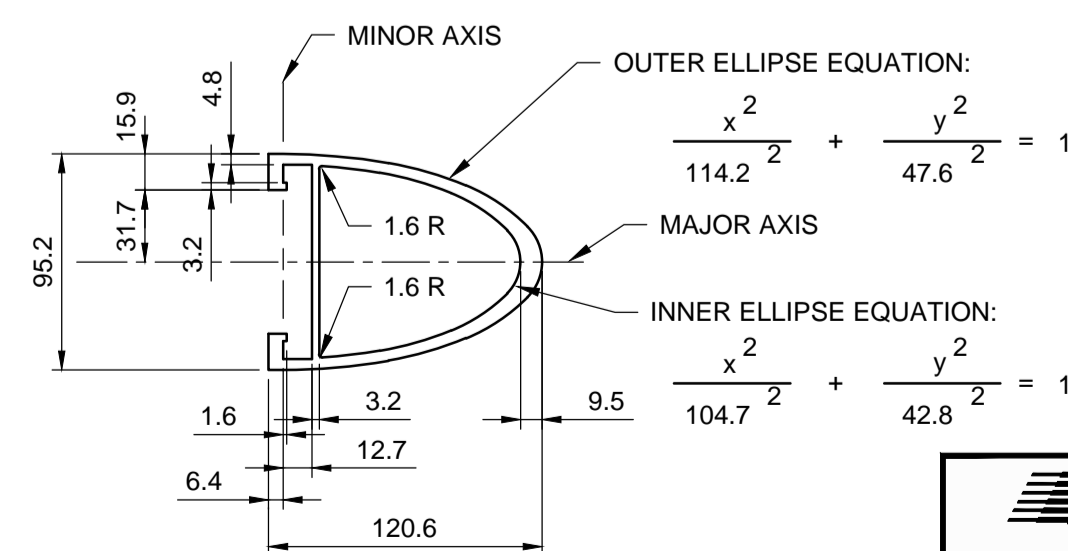
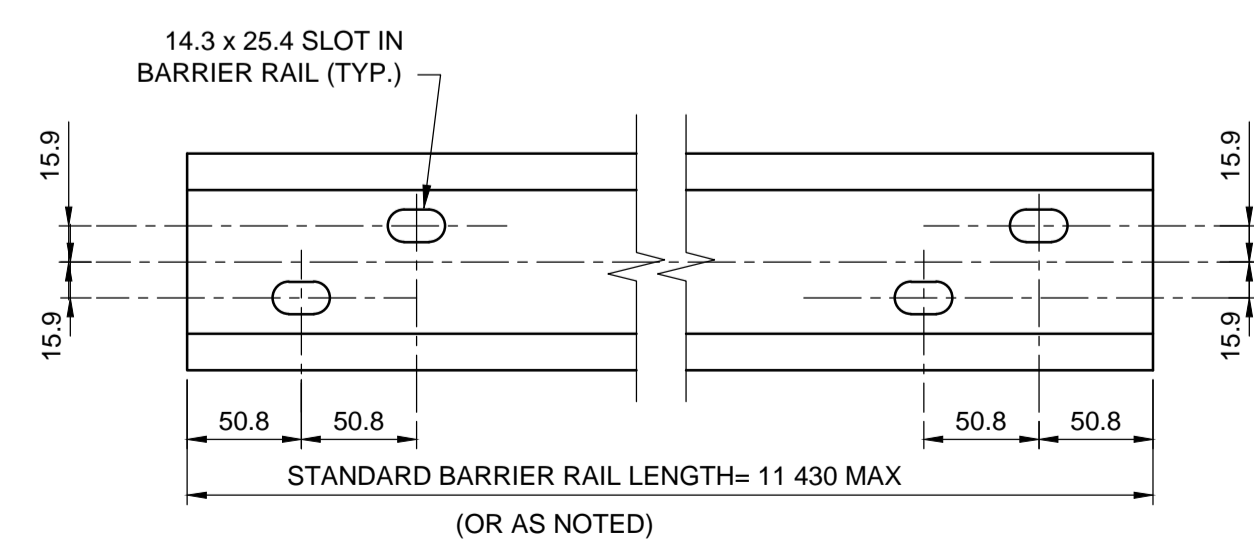
- THE 19MM DIA. HOLES (4) IN THE BASE OF THE BARRIER RAIL POSTS AND RAIL PLATES ARE DESIGNED TO ACCOMMODATE 16 MM DIA. RAIL POST ANCHOR BOLTS AS DETAILED. SUPPLY WITH EACH ANCHOR BOLT: ONE STAINLESS STEEL PLAIN WASHER, ONE STAINLESS STEEL LOCK WASHER, ONE STAINLESS HEX NUT AND ONE 50MM? GALVANIZED PLATE WASHER.
- A COMBINATION OF 1.5, 3.0 AND/OR 6.0MM THICK ALUMINUM RAIL POST OR END PLATE SHIMS ARE TO BE USED AS REQUIRED TO SET THE BARRIER RAIL TO THE SPECIFIED HEIGHT. (MINIMUM 3.0MM SHIM REQUIRED AT EACH POST OR PLATE).
- ALL EDGES AND CORNERS OF THE BARRIER POST PLATES AND EXTRUSIONS SHALL BE ROUNDED IN THE SHOP, TO A SMOOTH 2MM RADIUS TO THE SATISFACTION OF THE CONTRACT ADMINISTRATOR.
- BOTTOM SURFACE OF SHIM (SURFACE IN CONTACT WITH CONCRETE) IS TO BE PAINTED WITH 2 COATS OF ALKALI RESISTANT BITUMINOUS PAINT, EACH COAT BEING 1MM IN THICKNESS.

SPECIFICATIONS:

- EXTRUDED ALUMINUM SHAPES AND PLATES SHALL CONFORM TO THE REQUIREMENTS OF A.S.T.M. B221, ALLOY 6061-T6 OR ALLOY 6351-T5 (MINIMUM ELONGATION 10%)
- THE STAINLESS STEEL HEX HEAD AND SOCKET HEAD CAP SCREWS SHALL MEET THE REQUIREMENTS OF A.S.T.M. A276, TYPE 430, AND THE DIMENSIONAL REQUIREMENTS OF A.N.S.I. B18.3.
- DIMENSIONAL TOLERANCES NOT SHOWN OR IMPLIED ARE INTENDED TO BE THOSE CONSISTENT WITH THE PROPER FUNCTIONING OF THE PART, INCLUDING ITS APPEARANCE, AND ACCEPTED MANUFACTURING PRACTICES.
- THE POST SHAFT SHALL BE MADE FROM A SINGLE CHANNEL-SHAPE EXTRUSION WELDED TO A PLATE SHAPE. THE POST BASE AND SHAFT SHALL THEN BE WELDED TOGETHER.
- WELDING SHALL CONFORM TO THE REQUIREMENTS OF CSA STANDARDS S244-1969, WELDED ALUMINUM DESIGN AND WORKMANSHIP AND W47.2-1967, ALUMINUM WELDING QUALIFICATION CODES. ALUMINUM FILLER ALLOY SHALL BE ONE OF THE FOLLOWING: ER4043, ER5183, ER5356, ER5554, ER5556 AND ER5654.
- THE CONTRACTOR SHALL SUBMIT COMPLETE SHOP DRAWINGS CONSISTING OF THREE PRINTS AND ONE REPRODUCIBLE SEPIA TO THE CONTRACT ADMINISTRATOR FOR APPROVAL PRIOR TO FABRICATION OF ALUMINUM TRAFFIC BARRIER COMPONENTS.
- ANIT-SEIZE COATING TO BE APPLIED TO ALL TREADED COMPONENTS WHEN BEING ASSEMBLED. I.E. LPS-3-MANUFACTURED BY HOLT-LLOYD (CANADA) LTD. MARKHAM, ONT. L3R-2Z3.

METRIC

WHOLE NUMBERS INDICATE MILLIMETRES
DECIMALIZED NUMBERS INDICATE METRES



B.M. ELEV.	DESIGNED BY	N/A
	DRAWN BY	NBG
	CHECKED BY	SSR
	APPROVED BY	MBL
	HOR. SCALE	AS SHOWN
	VERTICAL SCALE	AS SHOWN
0 ISSUED FOR TENDER	13/11/07	SSR
NO. REVISIONS	DATE	BY
	13/11/07	

	ENGINEER'S SEAL
	N/A
RELEASED FOR CONSTRUCTION	CONSULTANT PROJECT NUMBER
DATE	13-7555

RECONSTRUCTION OF THE ST. JAMES STREET BRIDGE OVER OMAND'S CREEK	CITY DRAWING NUMBER B126-13- 20
ALUMINUM BARRIER RAIL STANDARD DETAILS	SHEET 20 OF 26
	CONSULTANT DRAWING NUMBER