

CONCRETE BARRIER AND ALUMINUM BARRIER RAIL LAYOUT
1:50

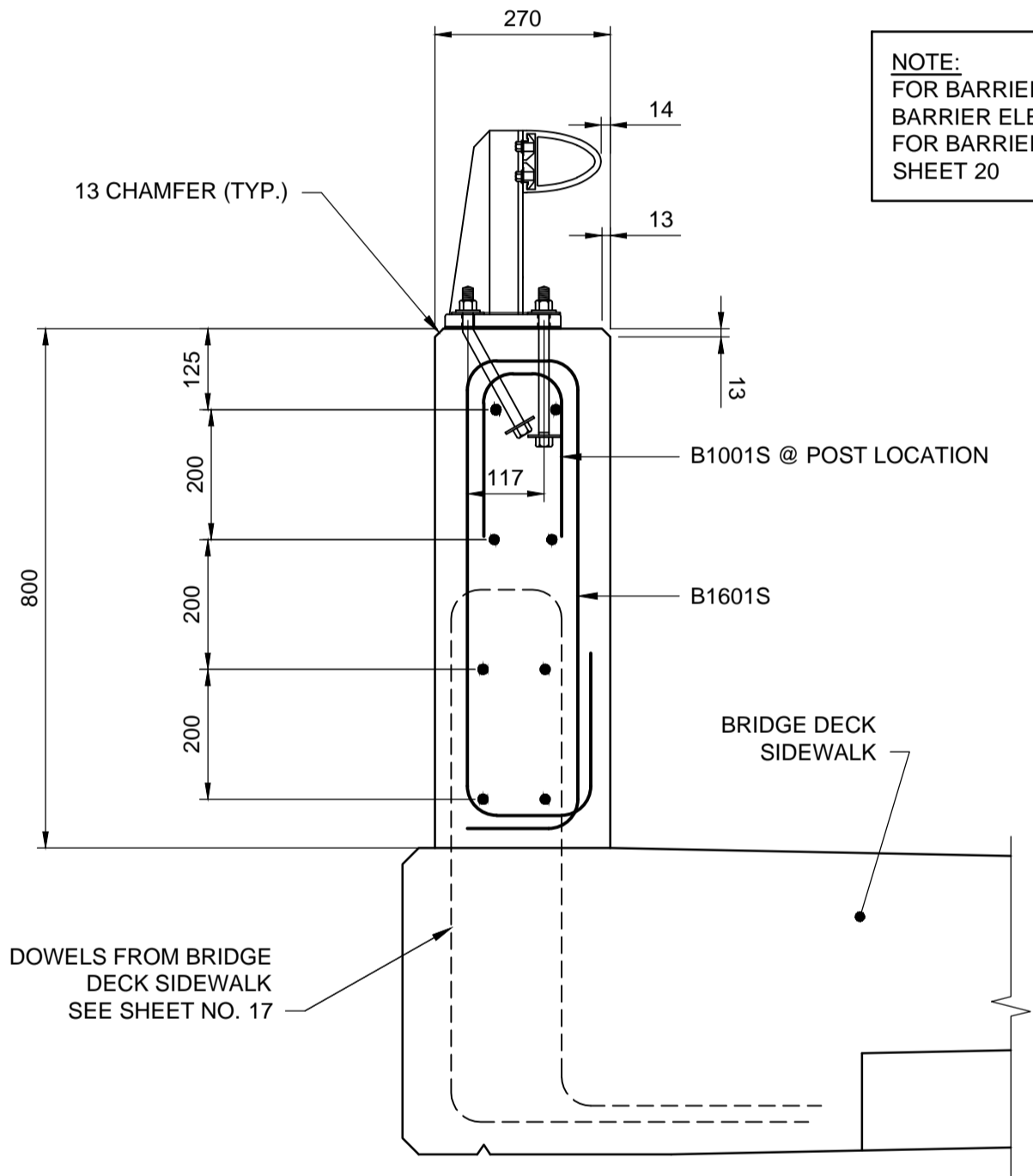
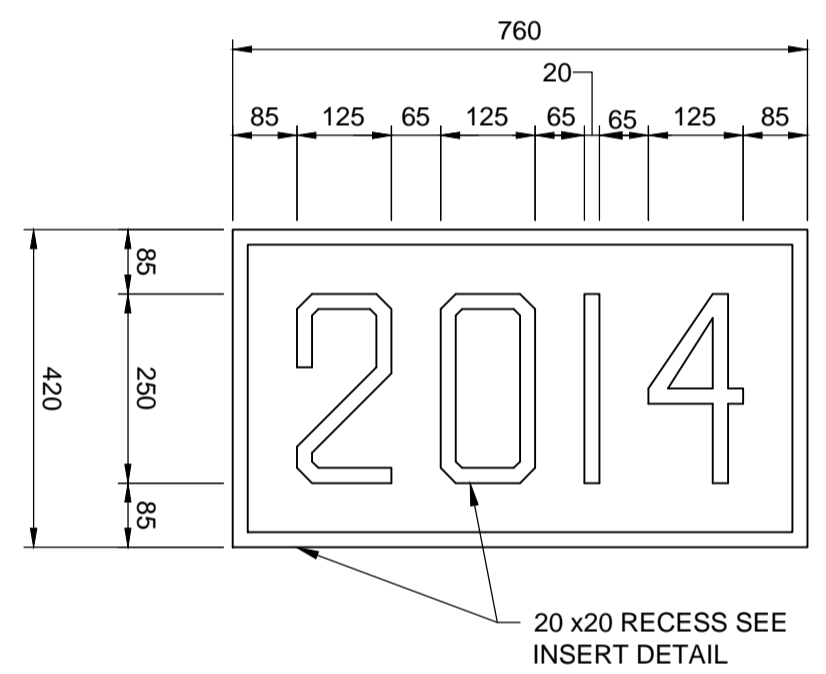
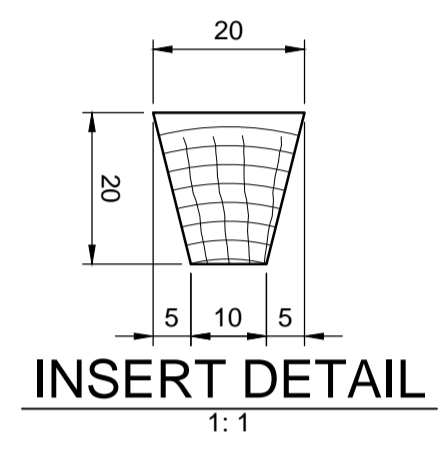
NOTE:
SHOWN WEST SIDE CONCRETE BARRIER ELEVATION
EAST SIDE CONCRETE BARRIER ELEVATION IS SIMILAR
BUT OPPOSITE HAND

OUTLINE OF STRUCTURE
IDENTIFICATION DATE BEHIND
(LOCATION : NORTH END OF WEST SIDE
BARRIER FACING CREEK EMBANKMENT)
SEE THIS SHEET FOR DETAILS

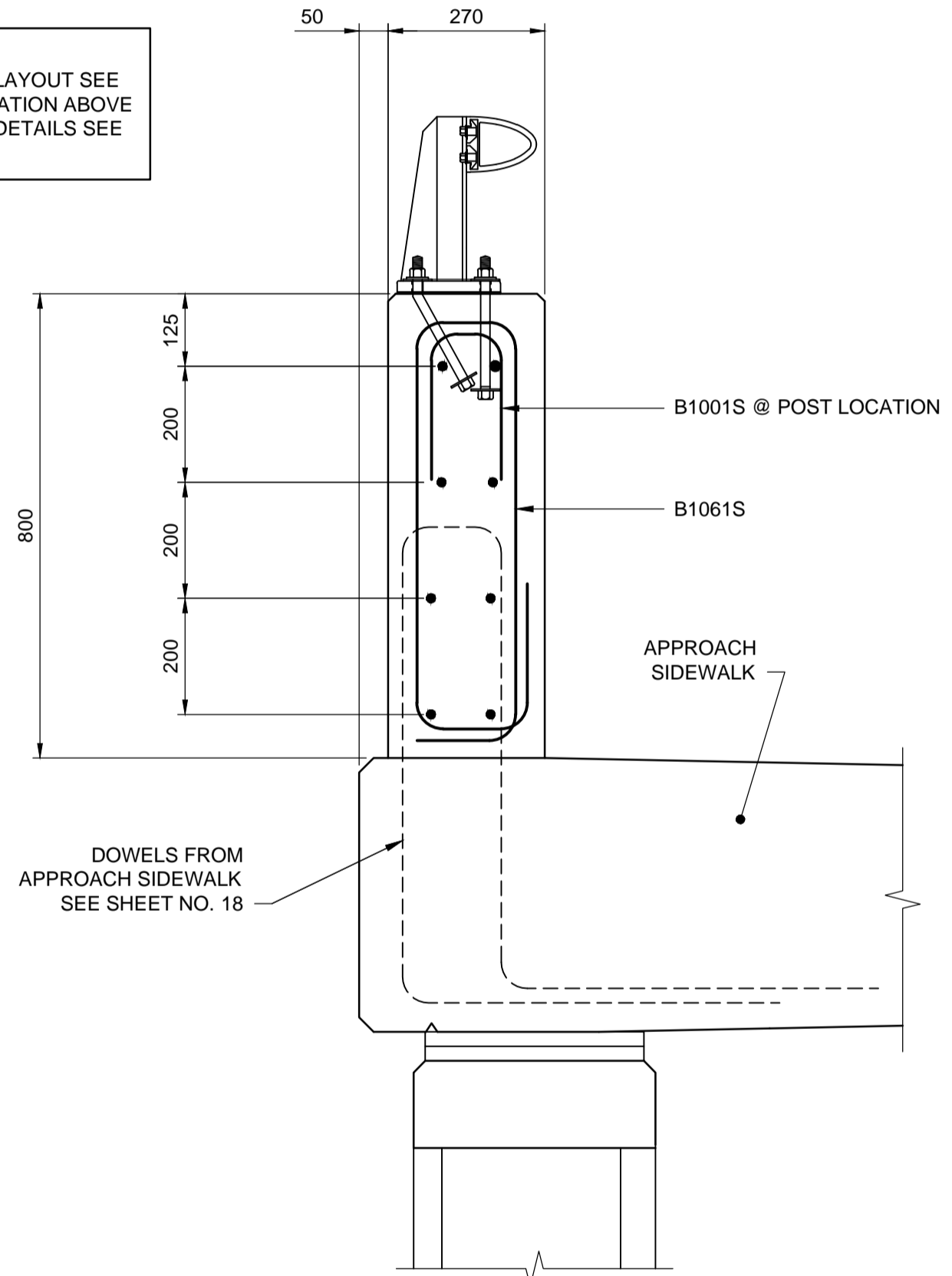
CONCRETE BARRIER REINFORCEMENT				
PANEL TYPE	QUANTITY	NO. OF B1601S STIRRUP BARS	LONGITUDINAL BARS	EXTRA REBARS @ RAIL POST LOCATION
				P1
P2	2	24	4-B1604S EA. FACE	
P3	3	20	4-B1605S EA. FACE	

CONSTRUCTION JOINT DOWELS	
NO. OF JOINT	REBAR DOWELS EACH JOINT
7	3-B2501S

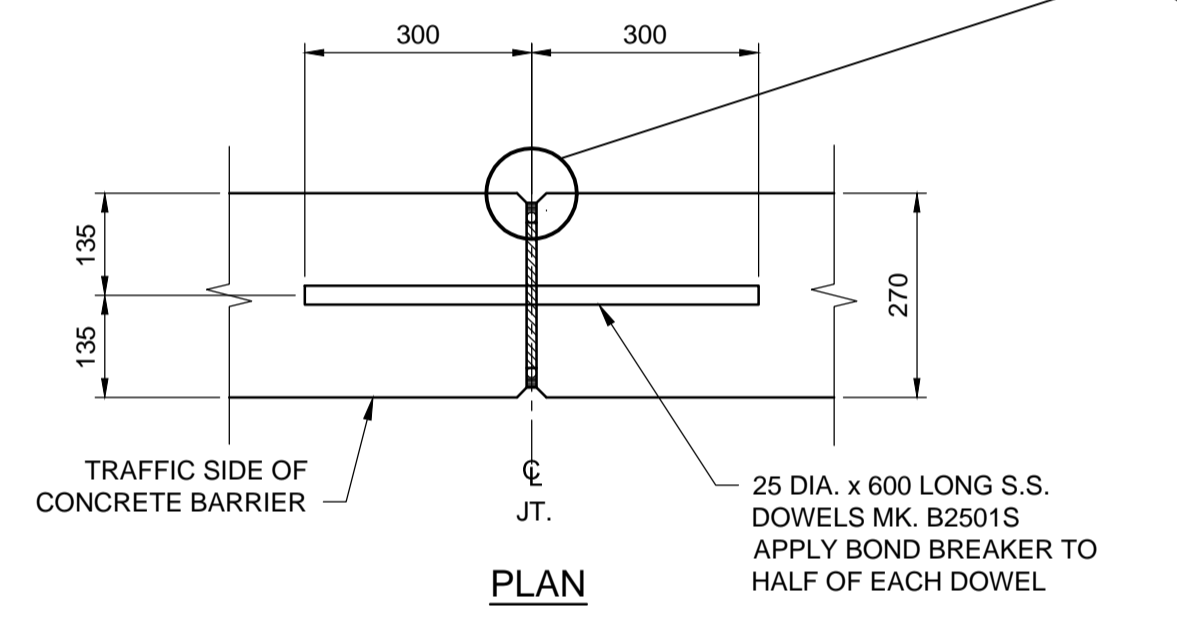
NOTE:
SHOWN WEST SIDE CONCRETE BARRIER REINFORCING
EAST SIDE CONCRETE BARRIER REINFORCING IS SIMILAR



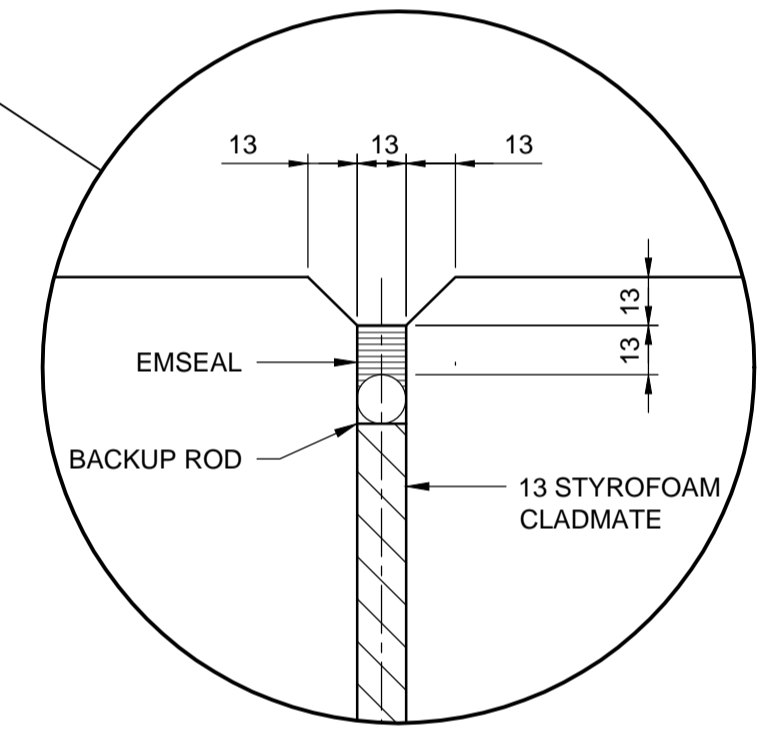
BRIDGE DECK CONCRETE BARRIER
1:10



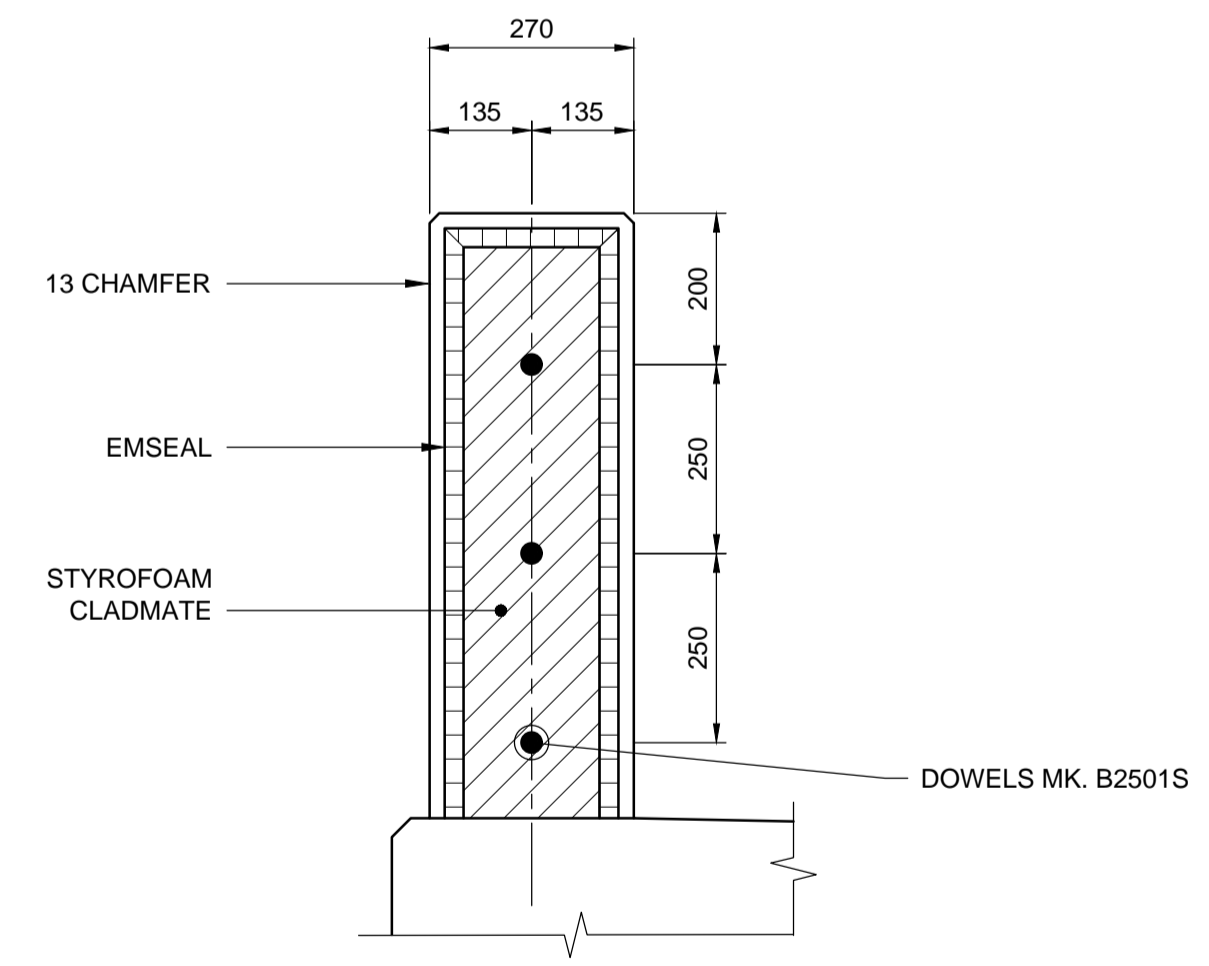
APPROACH CONCRETE BARRIER
1:10



PLAN

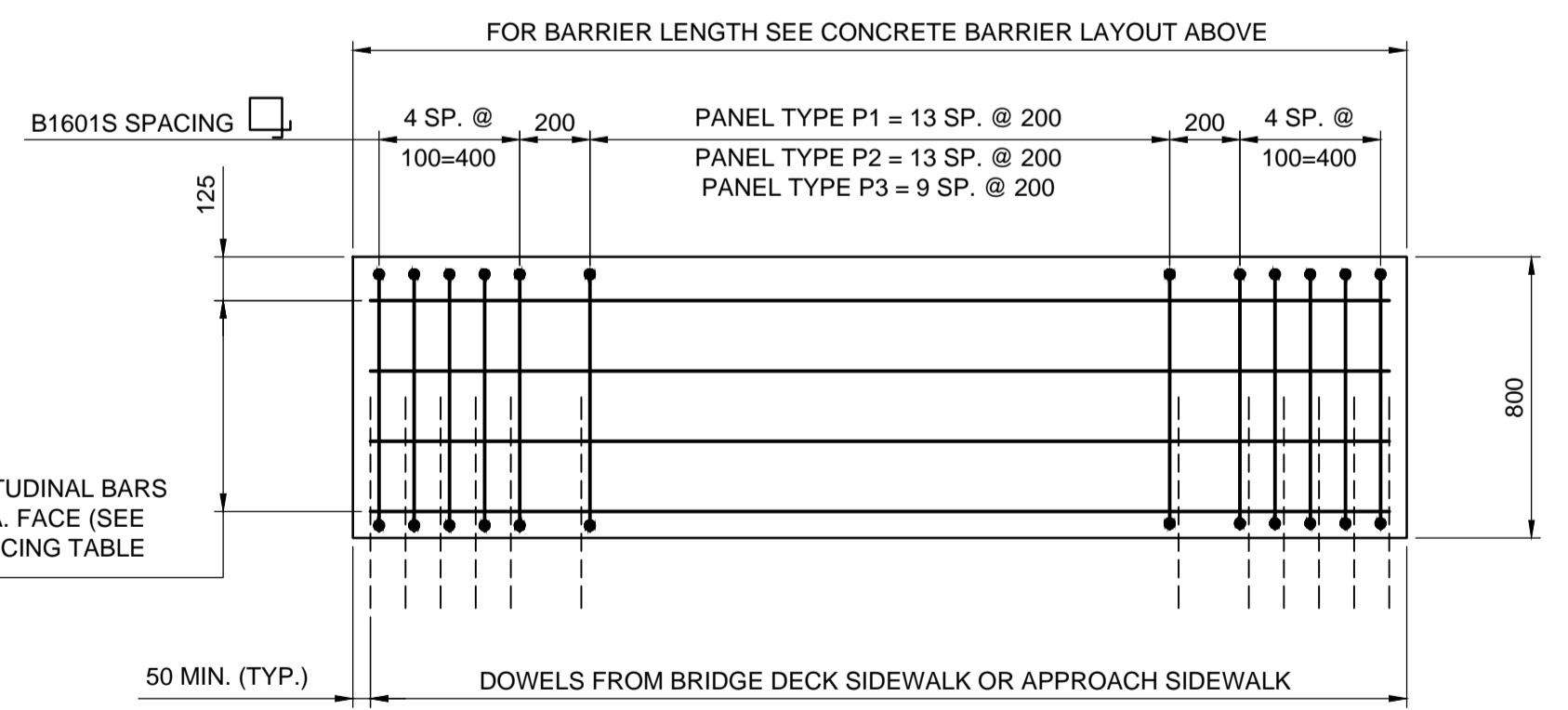


DETAIL
1:2

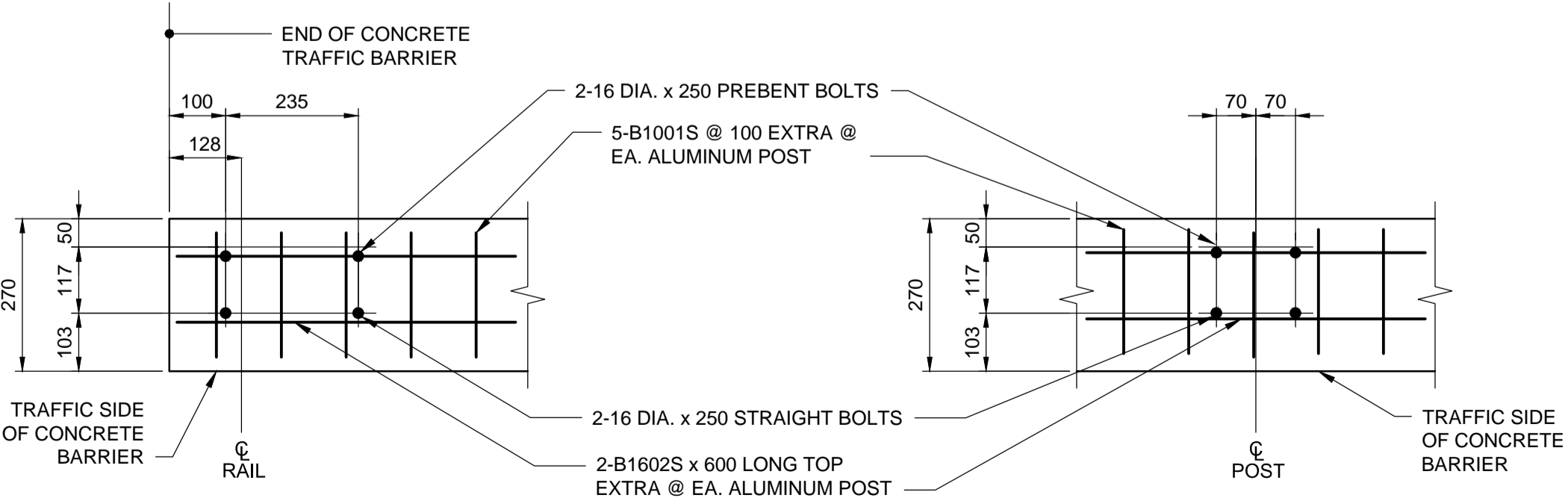


ELEVATION

TYPICAL CONSTRUCTION JOINT DETAIL FOR CONCRETE BARRIER
1:10



PANEL REINFORCING LAYOUT
1:20



TYPICAL ANCHOR BOLT LAYOUT FOR ALUMINUM RAIL POST
1:10



B.M. ELEV.	DESIGNED BY	SSR
	DRAWN BY	NBG
	CHECKED BY	CDW
	APPROVED BY	MBL
	HOR. SCALE	AS SHOWN
	VERTICAL SCALE	AS SHOWN
0 ISSUED FOR TENDER	13/11/07	SSR
NO. REVISIONS	DATE	BY
	13/11/07	



ENGINEER'S SEAL	PROVINCE OF MANITOBA
Nov 7/13	S.S. RIHAL
REGISTERED PROFESSIONAL ENGINEER	
CONSULTANT PROJECT NUMBER	13-7555

THE CITY OF WINNIPEG PUBLIC WORKS DEPARTMENT

RECONSTRUCTION OF THE ST. JAMES STREET BRIDGE OVER OMAND'S CREEK

CITY DRAWING NUMBER: B126-13-19
SHEET 19 OF 26
CONSULTANT DRAWING NUMBER

CONCRETE BARRIER RAIL AND ALUMINUM BARRIER LAYOUT

G:\CAD\137555\09-Structural\01-Contract\137555-09-BARRIER-RAILING-CON.dwg