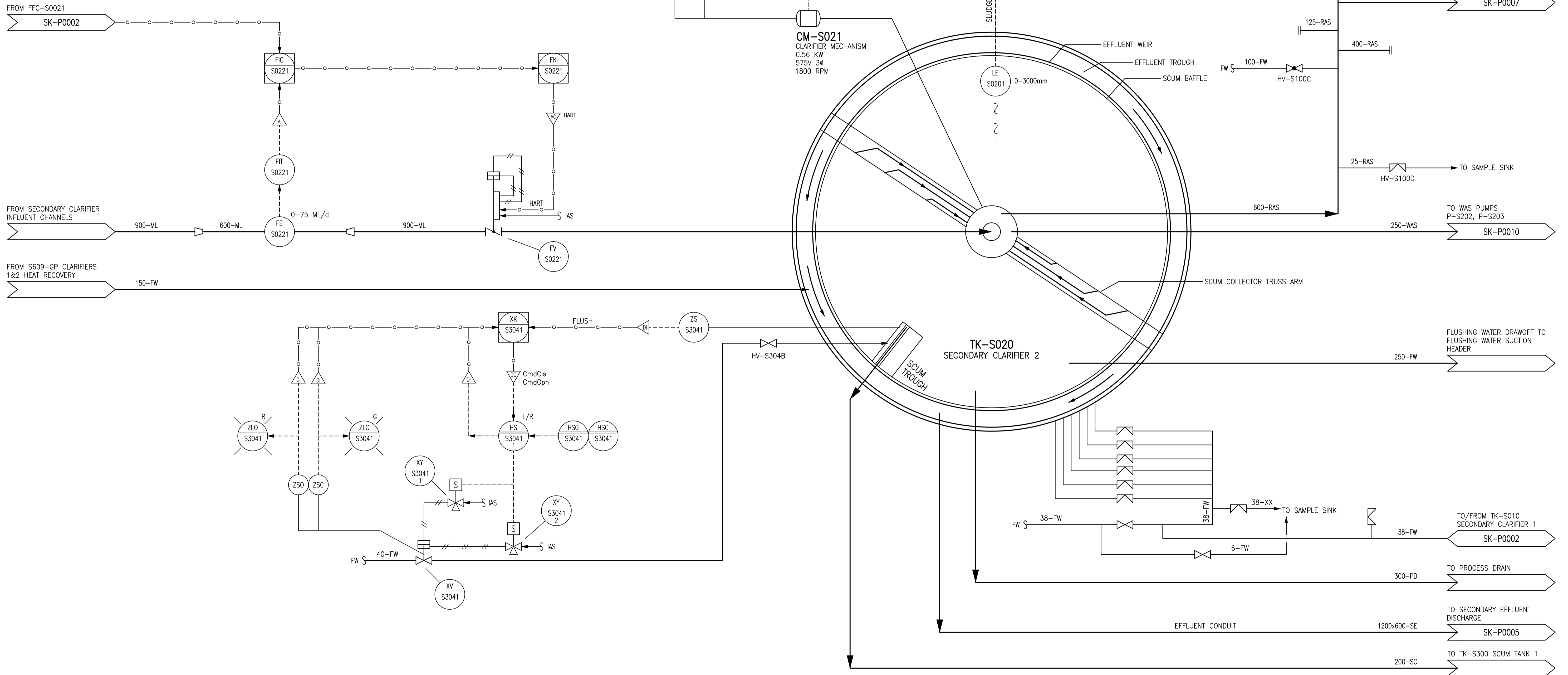


A1 SIZE - 594mm x 841mm

TK-S020 SECONDARY CLARIFIER 2	
DIAMETER:	33.5 m
SIDE WALL DEPTH:	4.6 m
VOLUME:	4048 m ³
SURFACE AREA:	880 m ²
WEIR LENGTH:	105 m
FLOW DISTRIBUTION:	25%
DETENTION TIME (AVG):	6.70 HR
DETENTION TIME (PEAK):	3.89 HR
SURFACE OVERTFLOW RATE (AVG):	3.66 m ³ /m ² /d
SURFACE OVERTFLOW RATE (PEAK):	6.18 m ³ /m ² /d
WEIR LOADING (AVG):	201
WEIR LOADING (PEAK):	347



NOTES:
 1. THIS DRAWING REPRESENTS A CONCEPTUAL INSTALLATION ONLY FOR THE PURPOSE OF CONTROL SYSTEM SELECTION.



NO.	REVISIONS	DATE	DESIGN	CHECK
00	ISSUED FOR TENDER	2013/10/30	CJR	BJC

		SNC-LAVALIN INC. 148 Nature Park Way Winnipeg, MB, Canada R3P 0X7 204-798-8080
DESIGNED BY: C. REIMER	CHECKED BY: B. CLEVEN	ENGINEER'S SEAL PRELIMINARY NOT TO BE USED FOR CONSTRUCTION
DRAWN BY: M.J. PERSSON	APPROVED BY: C. REIMER	
SCALE: NTS	RELEASED FOR CONSTRUCTION BY: DATE:	
DATE: 2013/08/07	DATE:	
CONSULTANT NO.:		

THE CITY OF WINNIPEG
 WATER AND WASTE DEPARTMENT

DEMONSTRATION SYSTEM
 SECONDARY CLARIFIERS
 PROCESS & INSTRUMENTATION DIAGRAM
 CLARIFIER 2

CITY DRAWING NUMBER SK-P0003	SHEET 001	REV. 00	SIZE A1
--	---------------------	-------------------	-------------------

LAST SAVE: 2013/10/30 - 1:33pm
 PATH: M:\12620\0004\ENG\40ENG\DD - General DWG\SK-P0003-001.dwg

SK-P0003-001.dwg