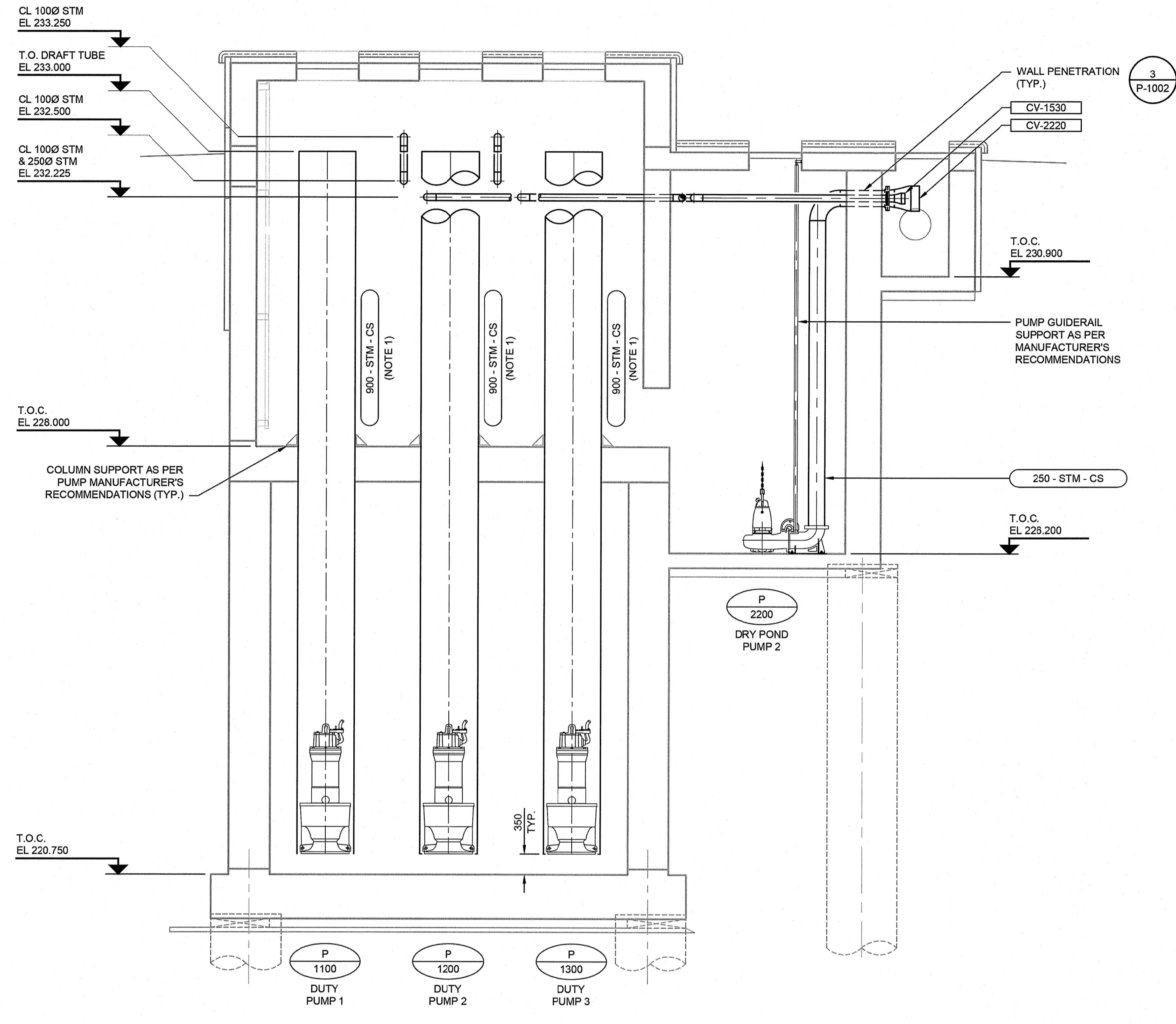
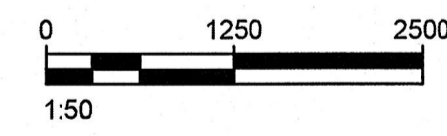


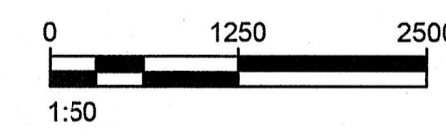
**A SECTION**

P-1003



**B SECTION**

P-1003



NOTE:  
1. DRAFT TUBE DIAMETER MAY DIFFER DEPENDING ON PUMP MODEL. COORDINATE FLOOR PENETRATION DETAILS WITH PUMP SUPPLIER PRIOR TO COMMENCING WORK.

LOCATION APPROVED UNDERGROUND STRUCTURES	
SUPV. U/G STRUCTURES COMMITTEE	DATE
NOTE: LOCATION OF UNDERGROUND STRUCTURES AS SHOWN ARE BASED ON THE BEST INFORMATION AVAILABLE, BUT NO GUARANTEE IS GIVEN THAT ALL EXISTING UTILITIES ARE SHOWN OR THAT THE GIVEN LOCATIONS ARE EXACT. CONFIRMATION OF EXISTENCE AND EXACT LOCATION OF ALL SERVICES MUST BE OBTAINED FROM THE INDIVIDUAL UTILITIES BEFORE PROCEEDING WITH CONSTRUCTION.	

B.M. ELEV.			
0	ISSUED FOR TENDER	13/10/15	SRG
NO.	REVISIONS	DATE	BY

<b>AECOM</b>	
DESIGNED BY: CL	CHECKED BY: DME
DRAWN BY: SRG	APPROVED BY: [Signature]
HOR. SCALE: AS NOTED	RELEASED FOR CONSTRUCTION BY: [Signature]
VERTICAL: AS NOTED	DATE

**APEGN**  
Certificate of Authorization  
AECOM Canada Ltd.  
No. 4671 Date: OCT 15, 2013

ENGINEER'S SEAL  
PROVINCE OF MANITOBA  
D.M.R. ENNS  
Member  
31777  
OCT 15, 2013  
REGISTERED PROFESSIONAL ENGINEER

**THE CITY OF WINNIPEG PUBLIC WORKS DEPARTMENT**

PLESSIS ROAD TWINNING AND GRADE SEPARATION AT CN REDDITT SUBDIVISION CONTRACT 3

PUMPING STATION PROCESS MECHANICAL SECTIONS

CITY DRAWING NUMBER U238-2014-2374  
SHEET 4 OF 5  
P-1004

**METRIC**  
WHOLE NUMBERS INDICATE MILLIMETRES  
DECIMALIZED NUMBERS INDICATE METRES

AECOM REVIEW DRIFT CHK

AECOM/NO DEFULTS