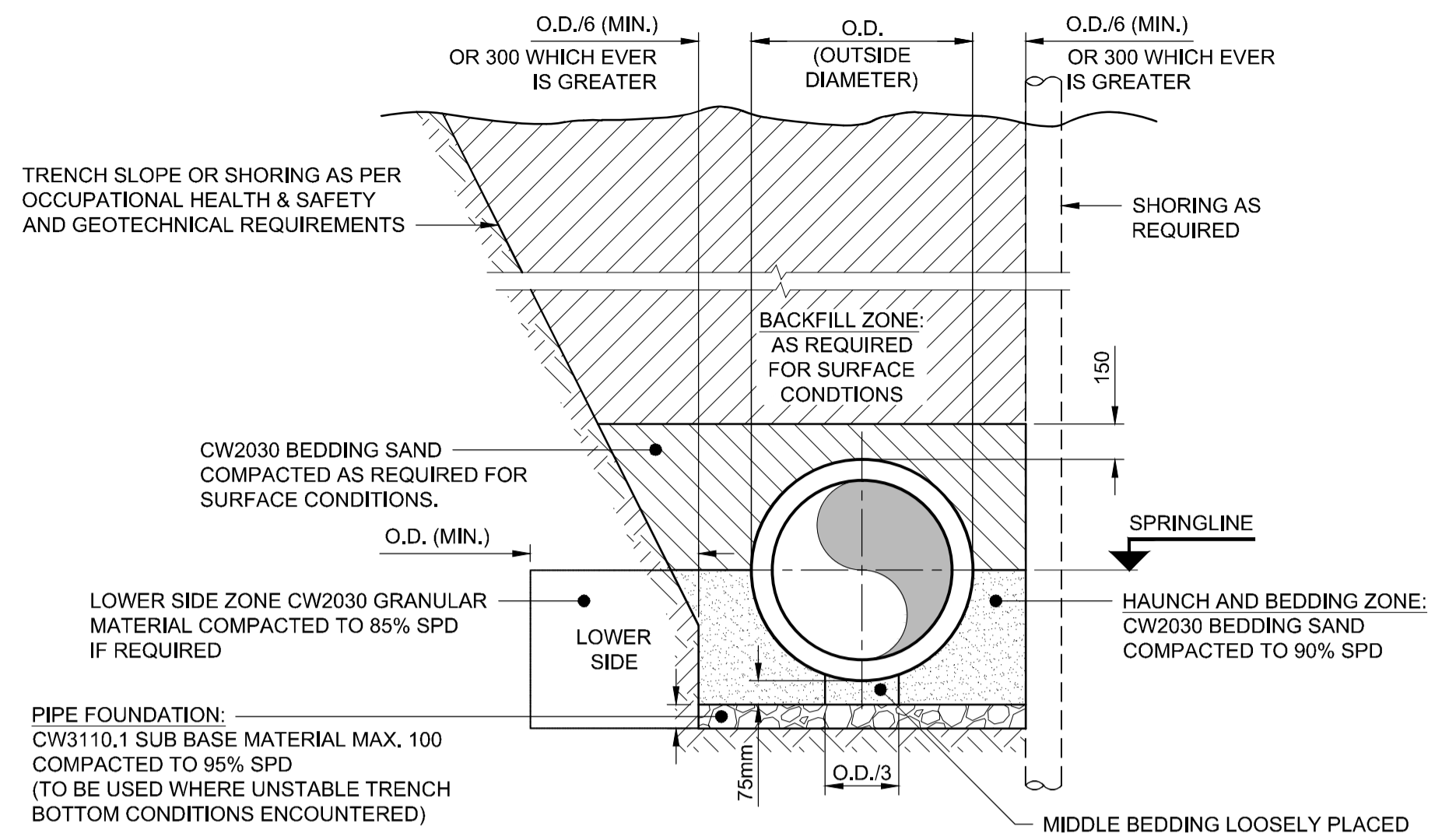
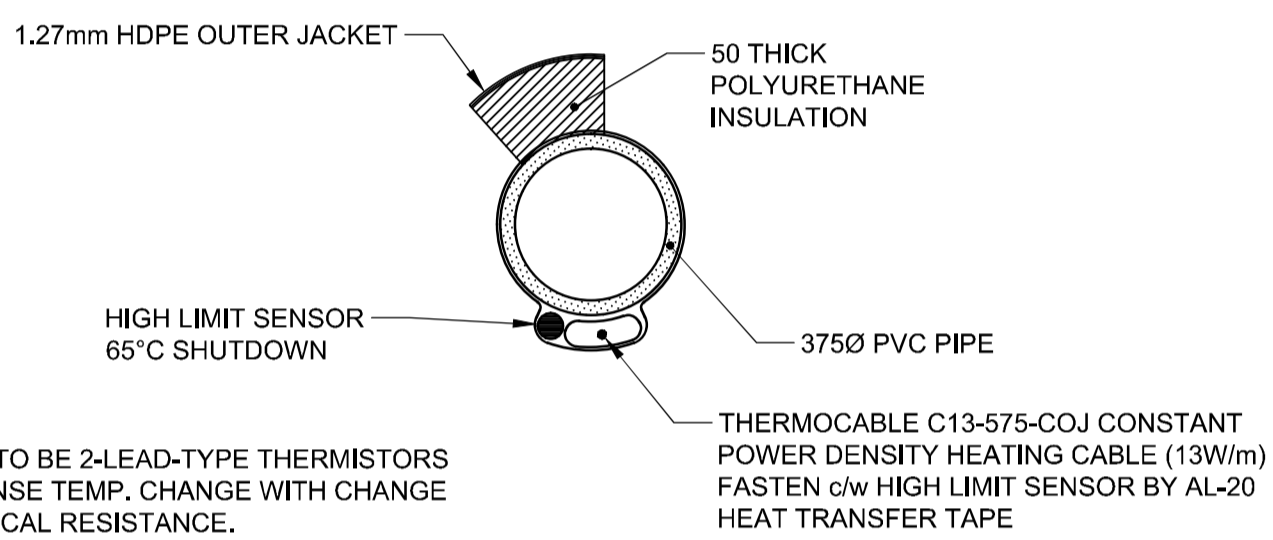


A1 - B14094
 803-0-11
 AECOM REVIEW DRAFT CHK
 JACK-6 STANDARDS/B



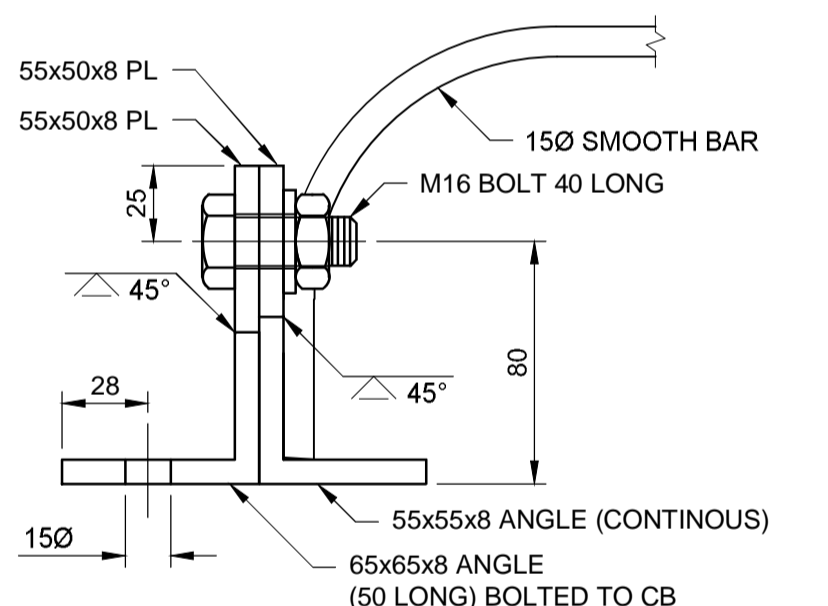
NOTES:
 1. ANY OPEN GRADED GRANULAR MATERIALS SHALL BE WRAPPED WITH A NON-WOVE GEOTEXTILE, SEAMS SHALL BE OVERLAPPED 300.

DETAIL
 TYPE 2 SIDD - SHAFT IN TRENCHLESS INSTALLATION
 N.T.S.

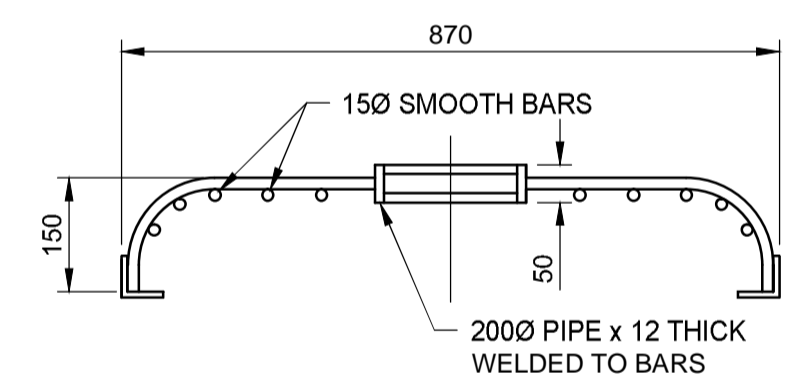


- SENSORS TO BE 2-LEAD-TYPE THERMISTORS WHICH SENSE TEMP. CHANGE WITH CHANGE IN ELECTRICAL RESISTANCE.
- REQUIRE EXTRA LONG LEAD FOR ON-OFF SENSOR AS DETAILED

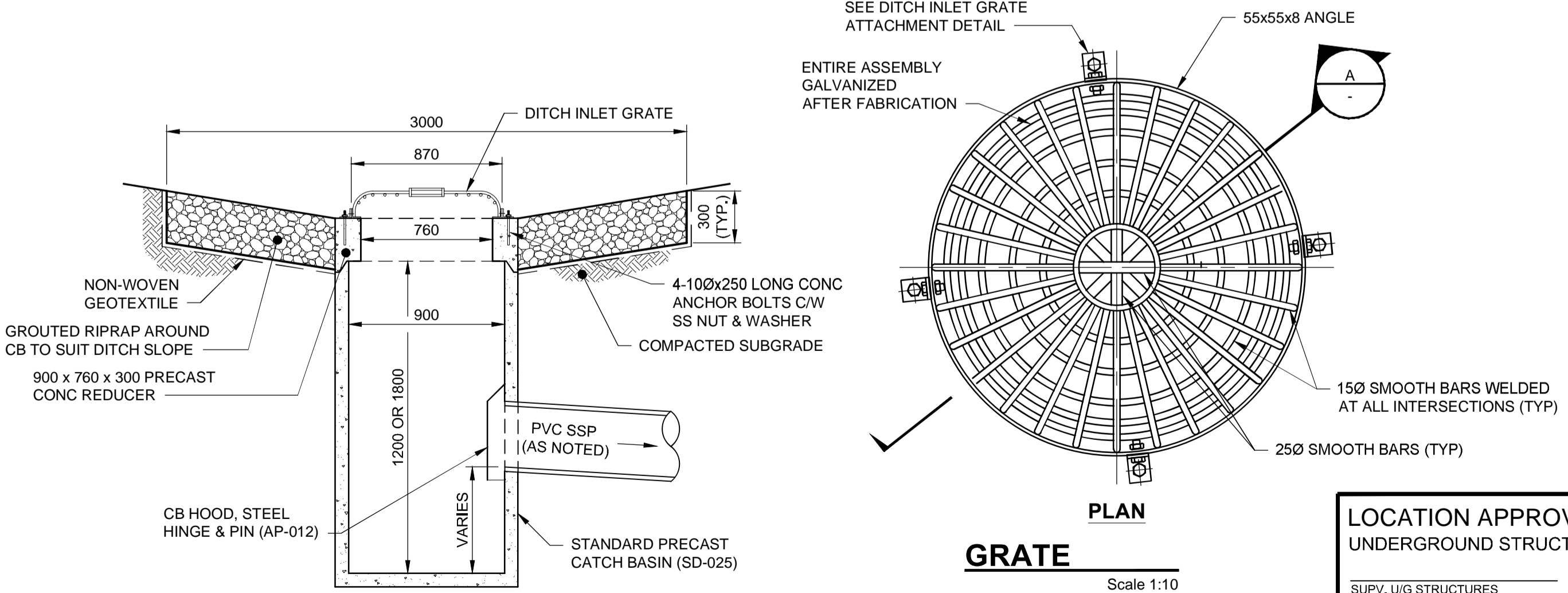
INSULATED PIPE DETAIL
 Scale: N.T.S.



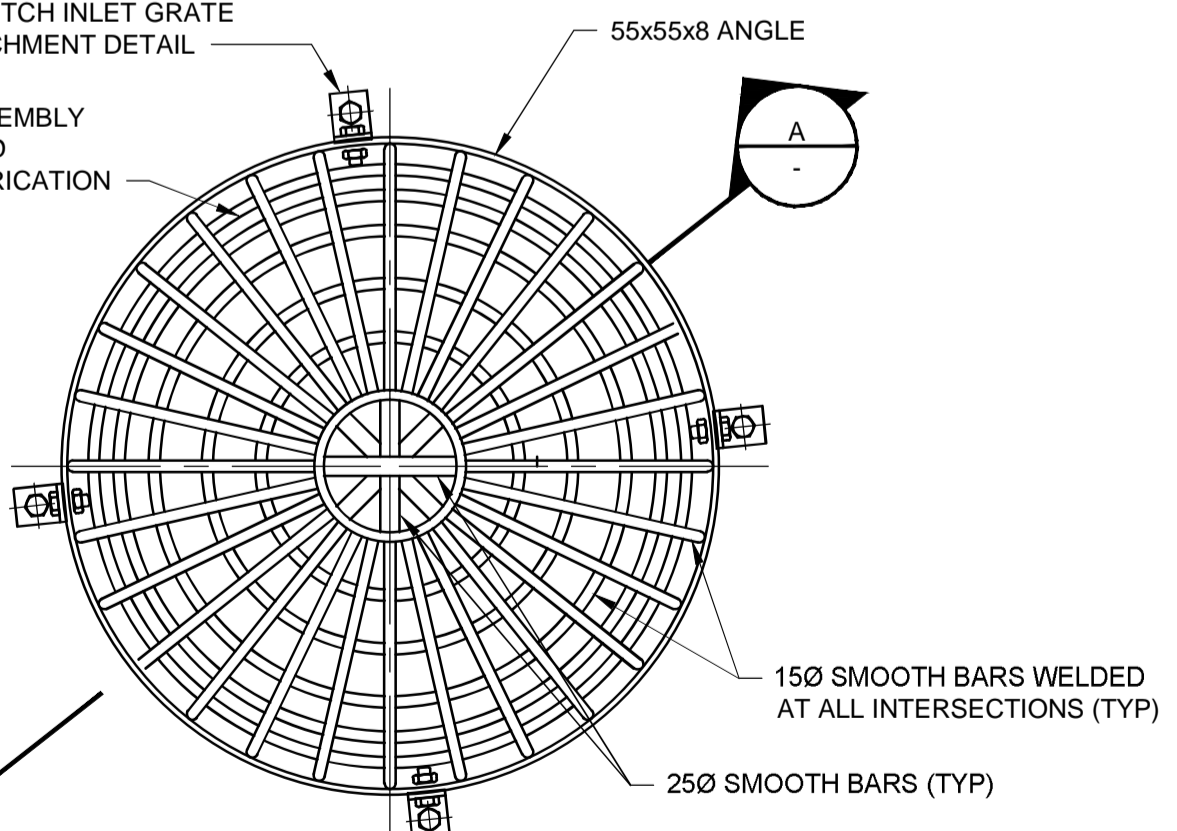
GRATE ATTACHMENT
 Scale 1:2.5



A SECTION
 Scale 1:10
 0 250 500

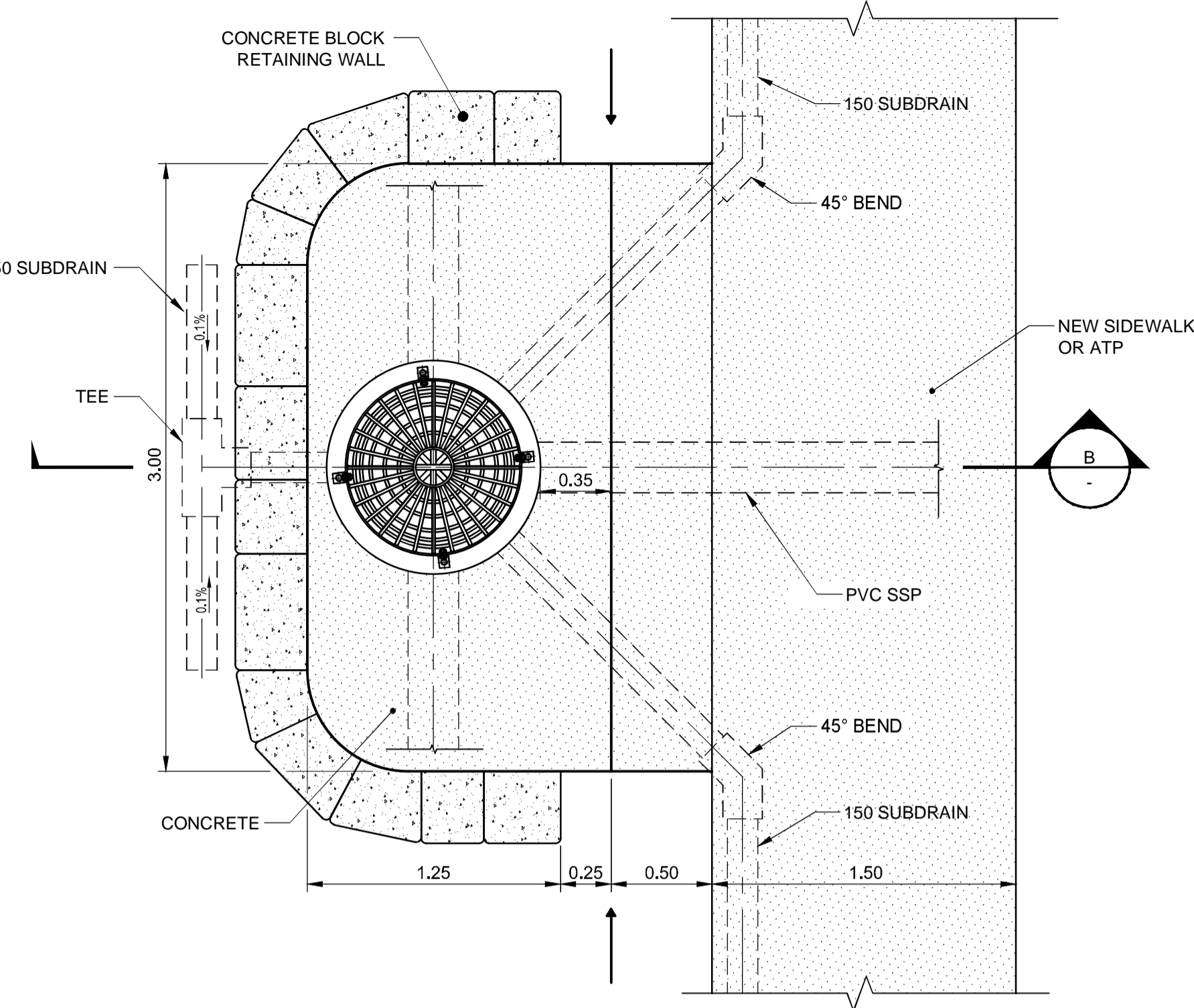


CATCHBASIN
 Scale 1:25
 0 625 1250
 1:25

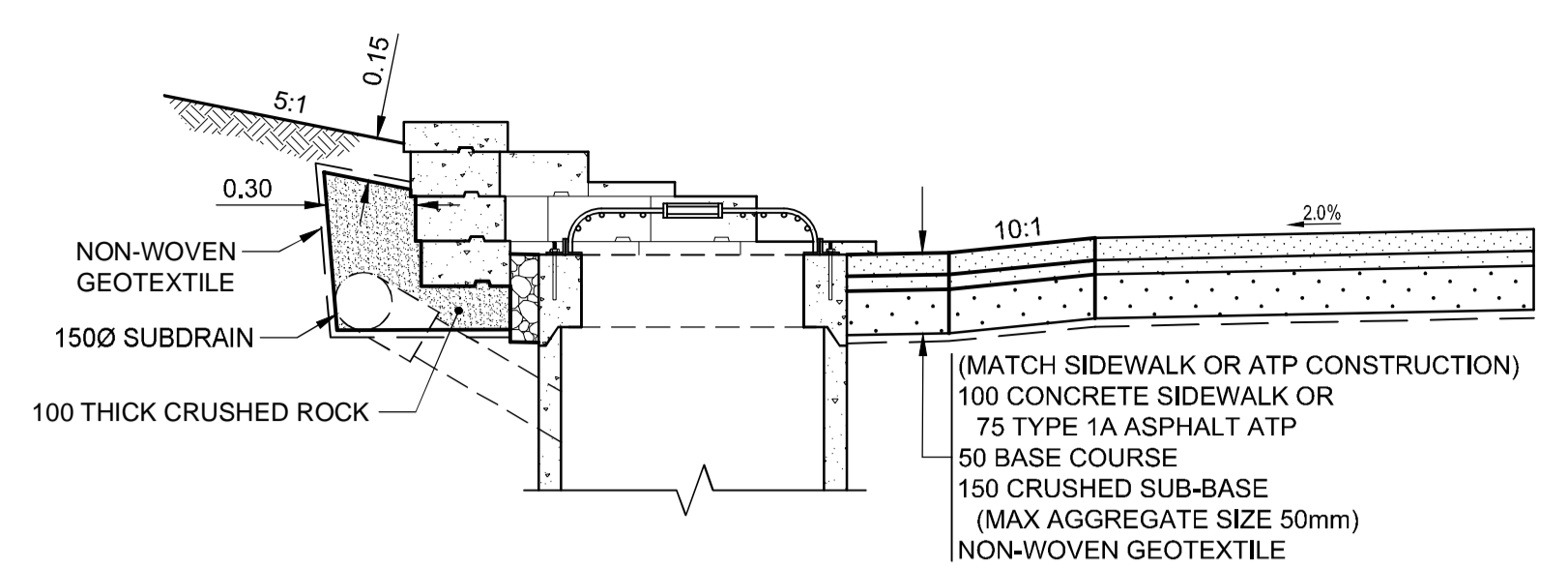


GRATE
 Scale 1:10
 0 250 500

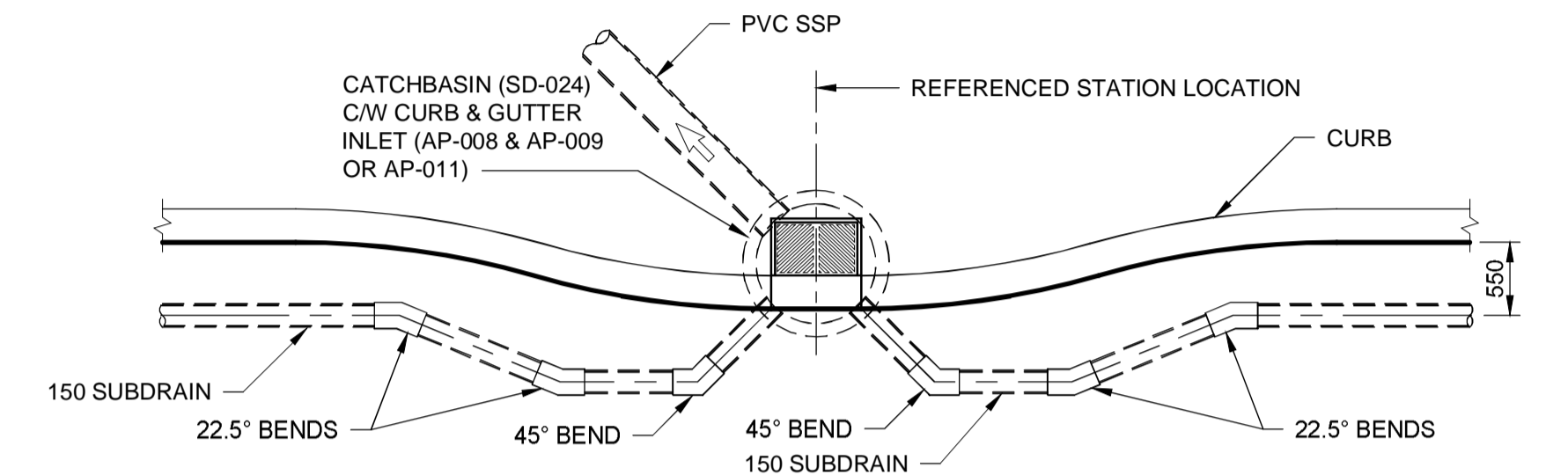
BEEHIVE DITCH INLET



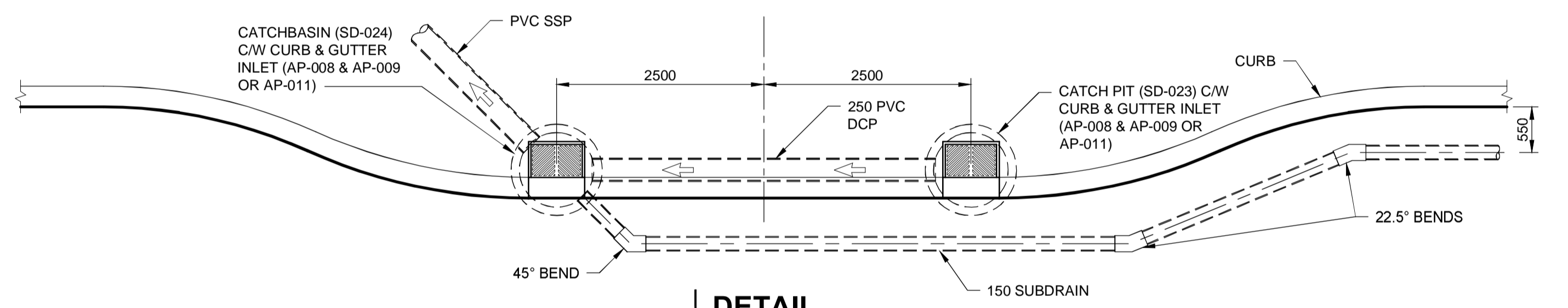
BEEHIVE DITCH INLET C/W RETAINING WALL
 Scale 1:25



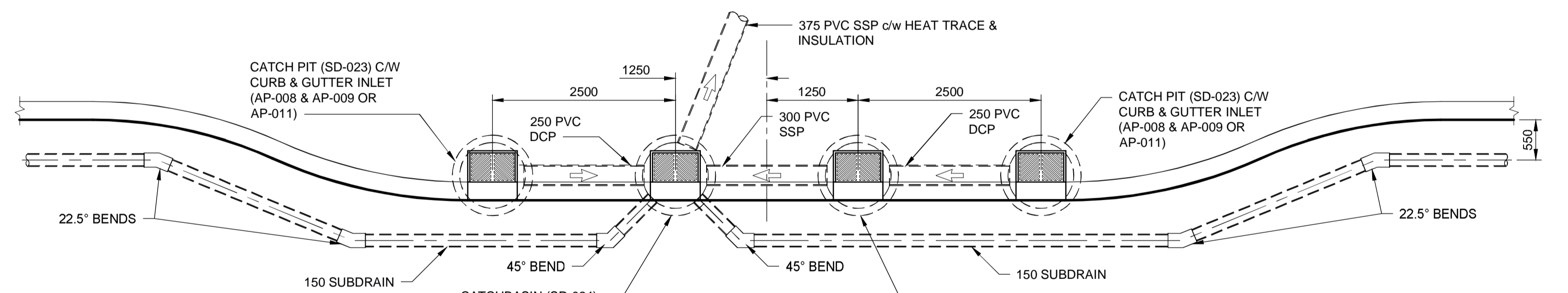
B BEEHIVE DITCH INLET C/W RETAINING WALL
 Scale 1:25



DETAIL
 SINGLE INLET WITH LEAD
 0 1250 2500
 1:50



DETAIL
 DUAL INLET WITH LEADS
 0 1250 2500
 1:50



DETAIL
 MULTIPLE INLETS WITH LEADS
 0 1250 2500
 1:50



METRIC
 WHOLE NUMBERS INDICATE MILLIMETRES
 DECIMALIZED NUMBERS INDICATE METRES

BID OPPORTUNITY NO. 712-2013

| | |
|---|------|
| LOCATION APPROVED UNDERGROUND STRUCTURES | |
| SUPV. U/G STRUCTURES COMMITTEE | DATE |
| NOTE: LOCATION OF UNDERGROUND STRUCTURES AS SHOWN ARE BASED ON THE BEST INFORMATION AVAILABLE, BUT NO GUARANTEE IS GIVEN THAT ALL EXISTING UTILITIES ARE SHOWN OR THAT THE GIVEN LOCATIONS ARE EXACT. CONFIRMATION OF EXISTENCE AND EXACT LOCATION OF ALL SERVICES MUST BE OBTAINED FROM THE INDIVIDUAL UTILITIES BEFORE PROCEEDING WITH CONSTRUCTION. | |

| | |
|-------------------------------|-------------------|
| B.M. ELEV. | |
| DESIGNED BY | MPG |
| CHECKED BY | |
| DRAWN BY | KMB |
| APPROVED BY | |
| HOR. SCALE: | AS NOTED |
| VERTICAL: | AS NOTED |
| RELEASED FOR CONSTRUCTION BY: | |
| NO. | ISSUED FOR TENDER |
| REVISIONS | DATE |
| | 2013/11/22 |
| | KLC |

| | |
|------------------------|-----------------------------|
| AECOM | |
| ENGINEER'S SEAL | |
| CONSULTANT DRAWING NO. | 60273041-SHT-01-CON3-C-4002 |

| | |
|---|----------------|
| THE CITY OF WINNIPEG PUBLIC WORKS DEPARTMENT | |
| PLESSIS ROAD TWINNING AND GRADE SEPARATION AT CN REDDITT SUBDIVISION CONTRACT 3 | |
| MISCELLANEOUS UNDERGROUND DETAILS | |
| CITY DRAWING NUMBER | UZ38-2014-2312 |
| SHEET | 12 OF 15 |
| C-4002 | |