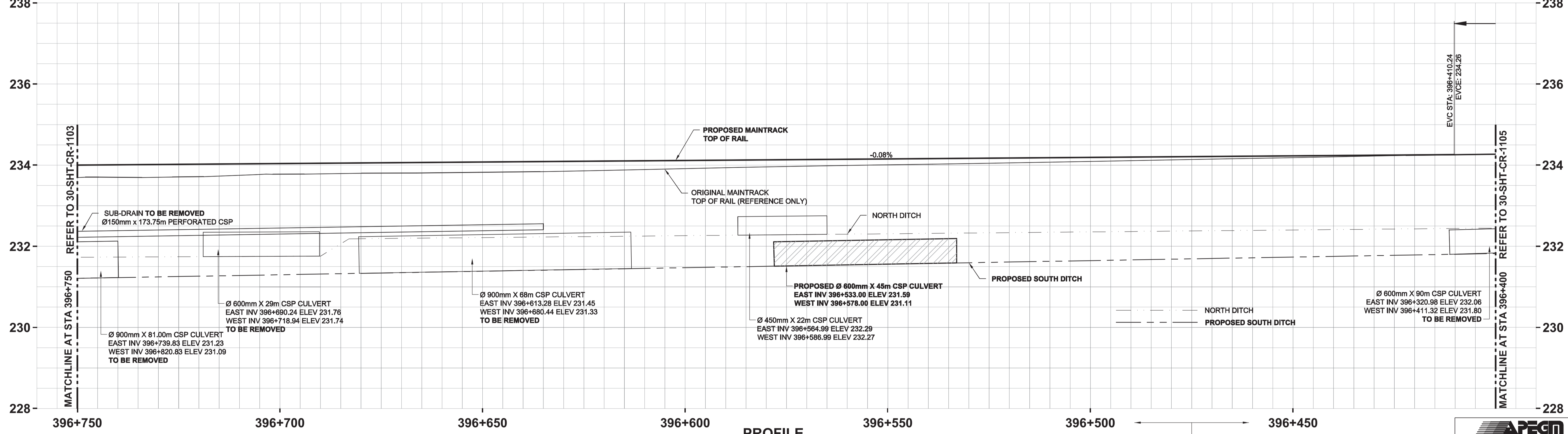


NOTE:
SEE DRAWING 30-SHT-CR-1106 FOR TRACKAGE INFORMATION.

NOTE:
RAILWAY EQUIPMENT AND FACILITIES TO BE PROTECTED DURING CONSTRUCTION.



STATIONING REFERENCED
ALONG SOUTH MAIN TRACK

APECM
Certificate of Authorization
AECOM Canada Ltd.
No. 4671 Date: 2013/10/15
BID OPPORTUNITY NO. 712-2013

LOCATION APPROVED
UNDERGROUND STRUCTURES

SUPV. U/G STRUCTURES COMMITTEE DATE

NOTE:
LOCATION OF UNDERGROUND STRUCTURES AS SHOWN ARE BASED ON THE BEST INFORMATION AVAILABLE. BUT NO GUARANTEE IS GIVEN THAT ALL EXISTING UTILITIES ARE SHOWN OR THAT THE GIVEN LOCATIONS ARE EXACT. CONFIRMATION OF EXISTENCE AND EXACT LOCATION OF ALL SERVICES MUST BE OBTAINED FROM THE INDIVIDUAL UTILITIES BEFORE PROCEEDING WITH CONSTRUCTION.

B.M. ELEV.	NO.	ISSUED FOR TENDER	REVISIONS	DATE	BY
	0	Issued For Tender		13/10/15	RCP

AECOM		ENGINEER'S SEAL	
DESIGNED BY: BRP	CHECKED BY: BJM		
DRAWN BY: WD	APPROVED BY: RCP		
HOR. SCALE: 1:500	RELEASED FOR CONSTRUCTION BY:		
VERTICAL: 1:50	DATE: 2013/10/15	DATE: 2013/10/15	CONSULTANT DRAWING NO. 30-SHT-CR-1104

THE CITY OF WINNIPEG PUBLIC WORKS DEPARTMENT

PLESSIS ROAD TWINNING AND GRADE SEPARATION AT CN REDDITT SUBDIVISION CONTRACT 3

SHOOFLY REMOVAL AND FINAL CONFIGURATION
PLAN AND PROFILE
Sta. 396+400 to Sta. 396+750

CITY DRAWING NUMBER U238-2014-2204
SHEET 04 OF 09
CR-1104