

KERNAGHAN AVE

BARRY AVE

PLESSIS RD

MATCHLINE: SEE SHEET CT-0059

MATCHLINE: SEE SHEET CT-0061

2013-10-08



BID OPPORTUNITY NO. 712-2013

150 WM	WATERMAIN	150 WM	HYDRO	HYDRO	150 WM	WATERMAIN	150 WM
	HYDRANT		MTS	MTS		HYDRANT	
	LAND DRAINAGE SEWER					LAND DRAINAGE SEWER	
	MANHOLE					MANHOLE	
	JUNCTIONS					JUNCTIONS	
	GAS					GAS	
EXISTING	LEGEND-PLAN	PROPOSED	EXISTING	LEGEND-PLAN	PROPOSED	EXISTING	LEGEND-PROFILE

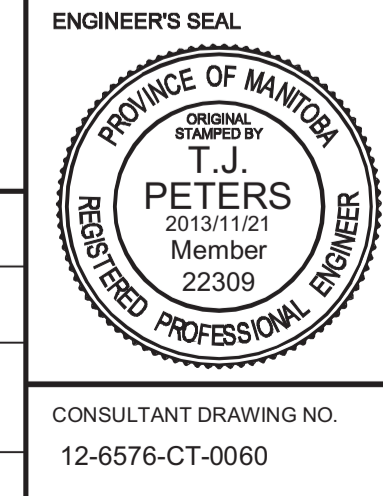
**LOCATION APPROVED UNDERGROUND STRUCTURES**

SUPV. U/G STRUCTURES COMMITTEE \_\_\_\_\_ DATE \_\_\_\_\_

**NOTE:**  
LOCATION OF UNDERGROUND STRUCTURES AS SHOWN ARE BASED ON THE BEST INFORMATION AVAILABLE. BUT NO GUARANTEE IS GIVEN THAT ALL EXISTING UTILITIES ARE SHOWN OR THAT THE GIVEN LOCATIONS ARE EXACT. CONFIRMATION OF EXISTENCE AND EXACT LOCATION OF ALL SERVICES MUST BE OBTAINED FROM THE INDIVIDUAL UTILITIES BEFORE PROCEEDING WITH CONSTRUCTION.

<b>B.M. ELEV.</b>					
0	ISSUED FOR TENDER	2013/11/21	TJP		
NO.	REVISIONS	DATE	BY	DATE	

DESIGNED BY	JMS
CHECKED BY	TJP
DRAWN BY	TJH
APPROVED BY	DPK
HOR. SCALE:	1:200
VERTICAL:	
RELEASED FOR CONSTRUCTION BY:	
DATE	2013/11/21



PLESSIS ROAD TWINNING AND GRADE SEPARATION AT CN REDDITT SUBDIVISION CONTRACT 3	
CITY DRAWING NUMBER	U238-2014-2160
SHEET	60 OF 66
CONCRETE JOINT LAYOUT (5 OF 6)	
<b>CT-0060</b>	