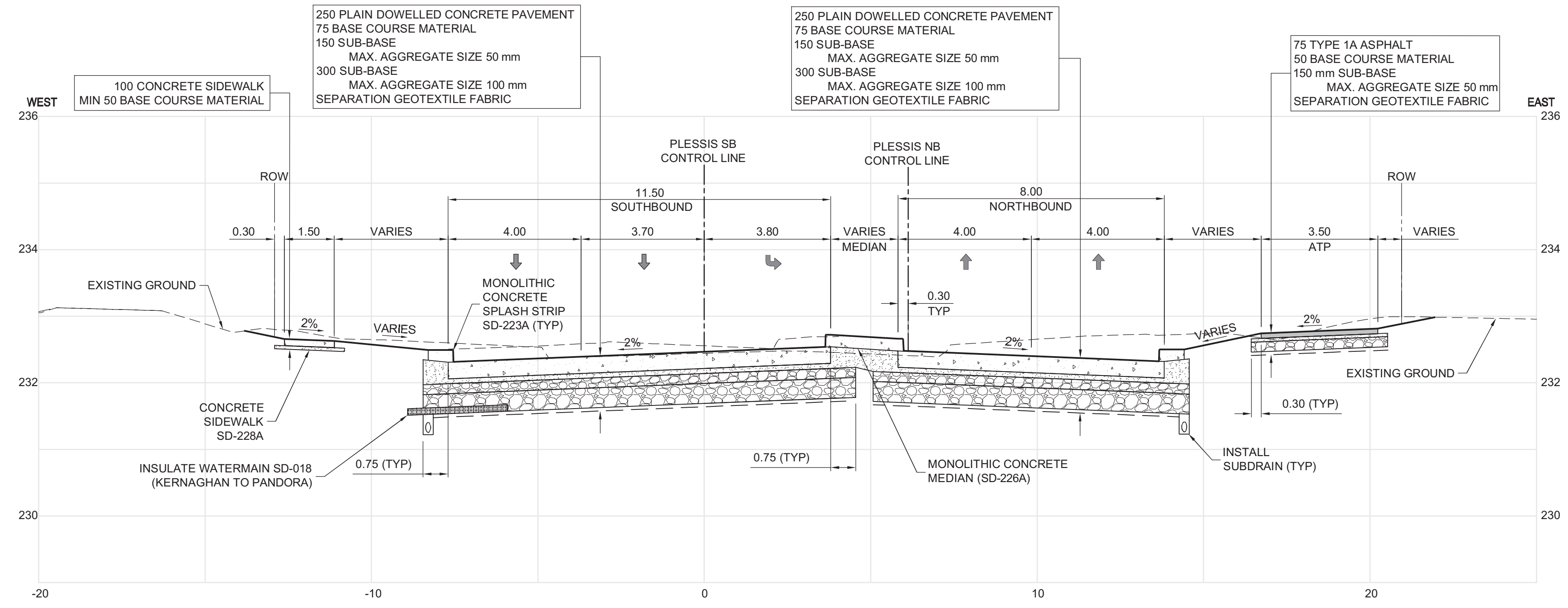
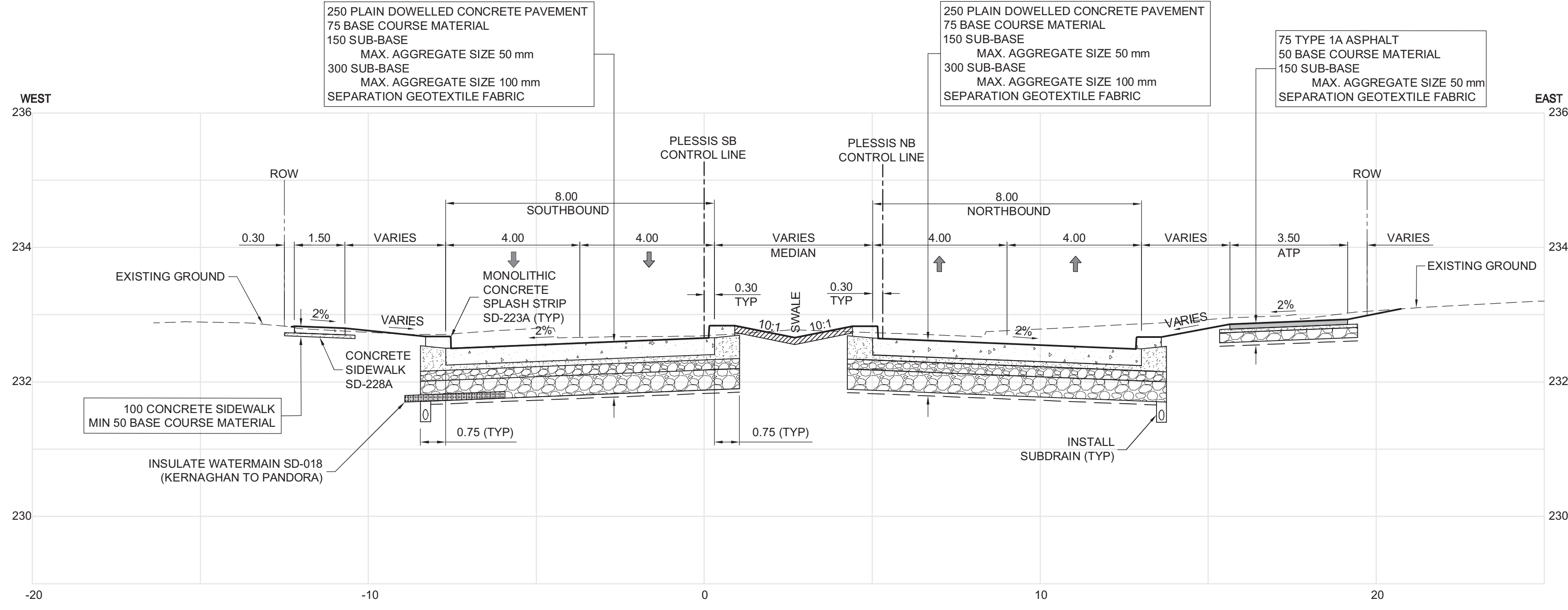


2013-05-22



J | PLESSIS ROAD - STA. 2+660 (SOUTHBOUND)
 CT-0036 Scale: H-100 V-1:50



K | PLESSIS ROAD - STA. 2+720 (SOUTHBOUND)
 CT-0036 Scale: H-100 V-1:50



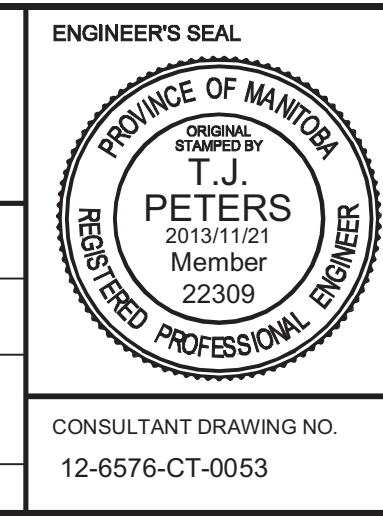
BID OPPORTUNITY NO. 712-2013

150 WM	WATERMAIN	150 WM	HYDRO	HYDRO	HYDRO	150 WM	WATERMAIN	150 WM
HYDRANT	HYDRANT	MTS	MTS	M.T.S.	M.T.S.	HYDRANT	HYDRANT	150 WM
VALVE	VALVE	300 LDS	300 LDS	CONCRETE	CONCRETE	VALVE	VALVE	300 LDS
LAND DRAINAGE SEWER	LAND DRAINAGE SEWER	250 WWS	250 WWS	ASPHALT	ASPHALT	LAND DRAINAGE SEWER	LAND DRAINAGE SEWER	250 WWS
WASTE WATER SEWER	WASTE WATER SEWER	MANHOLE	MANHOLE	PLANING	PLANING	WASTE WATER SEWER	WASTE WATER SEWER	250 WWS
CATCH BASIN	CATCH BASIN	CURB INLET	CURB INLET	SIDEWALK	SIDEWALK	WASTE WATER SEWER	WASTE WATER SEWER	250 WWS
JUNCTIONS	JUNCTIONS	JUNCTIONS	JUNCTIONS	PAVING STONES	PAVING STONES	WASTE WATER SEWER	WASTE WATER SEWER	250 WWS
CULVERT	CULVERT	CULVERT	CULVERT	PROPERTY LINE	PROPERTY LINE	WASTE WATER SEWER	WASTE WATER SEWER	250 WWS
GAS	GAS	GAS	GAS	DRAINAGE SWALE	DRAINAGE SWALE	WASTE WATER SEWER	WASTE WATER SEWER	250 WWS
EXISTING	LEGEND-PLAN	PROPOSED	EXISTING	DRAINAGE ARROW	DRAINAGE ARROW	WASTE WATER SEWER	WASTE WATER SEWER	250 WWS
PROPOSED	LEGEND-PLAN	PROPOSED	EXISTING	CURB RAMP	CURB RAMP	WASTE WATER SEWER	WASTE WATER SEWER	250 WWS
PROPOSED	LEGEND-PROFILE	PROPOSED	EXISTING	LEGEND-PROFILE	LEGEND-PROFILE	WASTE WATER SEWER	WASTE WATER SEWER	250 WWS

LOCATION APPROVED UNDERGROUND STRUCTURES
 SUPV. U/G STRUCTURES COMMITTEE DATE
 NOTE:
 LOCATION OF UNDERGROUND STRUCTURES AS SHOWN ARE BASED ON THE BEST INFORMATION AVAILABLE, BUT NO GUARANTEE IS GIVEN THAT ALL EXISTING UTILITIES ARE SHOWN OR THAT THE GIVEN LOCATIONS ARE EXACT. CONFIRMATION OF EXISTENCE AND EXACT LOCATION OF ALL SERVICES MUST BE OBTAINED FROM THE INDIVIDUAL UTILITIES BEFORE PROCEEDING WITH CONSTRUCTION.

B.M. ELEV.					
NO.	ISSUED FOR TENDER	2013/11/21	TJP	DATE	
REVISIONS					

DESIGNED BY	RTP	CHECKED BY	TJP
DRAWN BY	TJH	APPROVED BY	DPK
HOR. SCALE:	AS NOTED	RELEASED FOR CONSTRUCTION BY:	
VERTICAL:		DATE	2013/11/21



THE CITY OF WINNIPEG PUBLIC WORKS DEPARTMENT

PLESSIS ROAD TWINNING AND GRADE SEPARATION AT CN REDDITT SUBDIVISION CONTRACT 3

PLESSIS SECTIONS (6 OF 6)

CITY DRAWING NUMBER U238-2014-2153
 SHEET 53 OF 66

CONSULTANT DRAWING NO. 12-6576-CT-0053

CT-0053