

- CONSTRUCTION NOTES:**
1. CONTRACTOR SHALL TAKE PRECAUTIONARY STEPS TO AVOID DAMAGE FROM CONSTRUCTION ACTIVITIES TO EXISTING BOULEVARDS AND TREES WITHIN THE LIMITS OF CONSTRUCTION.
  2. LOCATION OF EXISTING SERVICES ARE TO BE CONFIRMED IN THE FIELD BY THE CONTRACTOR.
  3. TIE-INS TO BE VERIFIED IN THE FIELD BY THE CONTRACT ADMINISTRATOR.
  4. LIMITS OF SIDEWALK RENEWALS TO BE FINALIZED IN THE FIELD BY THE CONTRACT ADMINISTRATOR.
  5. FOR ADJUSTMENTS AND REMOVALS SEE SHEETS CT-0002 TO CT-0010.
  6. DITCH GRADING TO BE FINALIZED IN FIELD BY CONTRACT ADMINISTRATOR.
  7. INSTALL 18 m OF 150 mm SUB DRAIN TO CATCH BASINS IN BOTH DIRECTIONS PARALLEL TO ROADWAY AS PER SD-245 AND CAP ENDS.
  8. INSTALL 100 m OF 150 mm SUB DRAIN ON EITHER SIDE OF PLESSIS UNDERPASS LOW POINT. (LOWEST PAVEMENT EDGE ONLY)
  9. SEE CIVIL DRAWINGS FOR ALL CATCH BASIN AND CULVERT INFORMATION.
  10. INSTALL MODIFIED BARRIER CURB (SD-203B) ON ALL CONCRETE APPROACH RADII.
  11. EXCAVATION SLOPES ON EITHER SIDE OF THE RAIL SHOOFLY SHALL BE AS DIRECTED IN THE GEOTECHNICAL MEMO WITHIN THE BID OPPORTUNITY.
  12. NO VIBRATORY COMPACTION OVER OIL LINES.

**METRIC**

WHOLE NUMBERS INDICATE MILLIMETRES  
DECIMALIZED NUMBERS INDICATE METRES

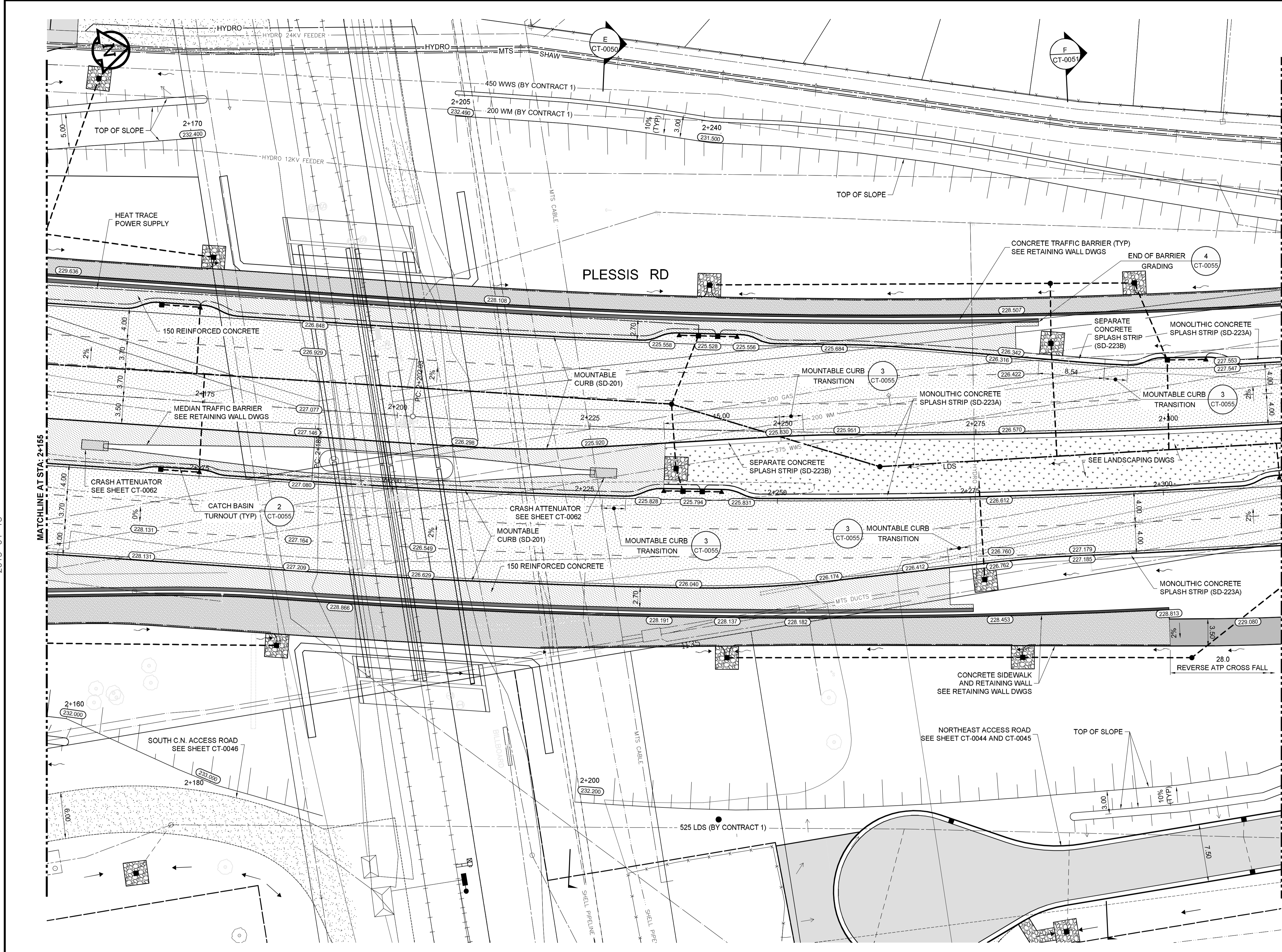
**WARNING**

IF POWER EQUIPMENT OR EXPLOSIVES ARE TO BE USED FOR EXCAVATION ON THIS PROJECT THE CONTRACTOR MUST:

1. NOTIFY THE GAS COMPANY OF THE PROPOSED LOCATION OF EXCAVATION.
2. TAKE PRECAUTION TO AVOID DAMAGE TO GAS COMPANY INSTALLATIONS SEE PROVINCIAL REGULATION 140/22 FOR DETAILS.
3. OBTAIN EXCAVATION PERMITS PRIOR TO CONSTRUCTION.



BID OPPORTUNITY NO. 712-2013



2013-04-15

|             |                     |          |          |             |          |             |                     |             |
|-------------|---------------------|----------|----------|-------------|----------|-------------|---------------------|-------------|
| 150 WM      | WATERMAIN           | 150 WM   | HYDRO    | HYDRO       | HYDRO    | 150 WM      | WATERMAIN           | 150 WM      |
| HYDRANT     | HYDRANT             | MTS      | MTS      | MTS         | MTS      | HYDRANT     | HYDRANT             | HYDRANT     |
| VALVE       | VALVE               |          |          |             |          | VALVE       | VALVE               | VALVE       |
| 300 LDS     | LAND DRAINAGE SEWER | 300 LDS  |          |             |          | 300 LDS     | LAND DRAINAGE SEWER | 300 LDS     |
| 250 WWS     | WASTE WATER SEWER   | 250 WWS  |          |             |          | 250 WWS     | WASTE WATER SEWER   | 250 WWS     |
| MANHOLE     | MANHOLE             |          |          |             |          | MANHOLE     | MANHOLE             | MANHOLE     |
| CATCH BASIN | CATCH BASIN         |          |          |             |          | CATCH BASIN | CATCH BASIN         | CATCH BASIN |
| CURB INLET  | CURB INLET          |          |          |             |          | CURB INLET  | CURB INLET          | CURB INLET  |
| JUNCTIONS   | JUNCTIONS           |          |          |             |          | JUNCTIONS   | JUNCTIONS           | JUNCTIONS   |
| CULVERT     | CULVERT             |          |          |             |          | CULVERT     | CULVERT             | CULVERT     |
| 100 GAS     | GAS                 | 100 GAS  |          |             |          | 100 GAS     | GAS                 | 100 GAS     |
| EXISTING    | LEGEND-PLAN         | PROPOSED | EXISTING | LEGEND-PLAN | PROPOSED | EXISTING    | LEGEND-PROFILE      | PROPOSED    |

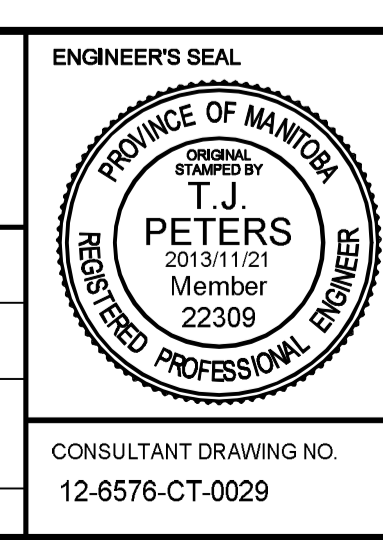
**LOCATION APPROVED UNDERGROUND STRUCTURES**

SUPV. U/G STRUCTURES COMMITTEE DATE

**NOTE:**  
LOCATION OF UNDERGROUND STRUCTURES AS SHOWN ARE BASED ON THE BEST INFORMATION AVAILABLE. BUT NO GUARANTEE IS GIVEN THAT ALL EXISTING UTILITIES ARE SHOWN OR THAT THE GIVEN LOCATIONS ARE EXACT. CONFIRMATION OF EXISTENCE AND EXACT LOCATION OF ALL SERVICES MUST BE OBTAINED FROM THE INDIVIDUAL UTILITIES BEFORE PROCEEDING WITH CONSTRUCTION.

|            |                   |            |     |      |  |
|------------|-------------------|------------|-----|------|--|
| B.M. ELEV. |                   |            |     |      |  |
| 0          | ISSUED FOR TENDER | 2013/11/21 | TJP |      |  |
| NO.        | REVISIONS         | DATE       | BY  | DATE |  |

|             |       |                               |            |
|-------------|-------|-------------------------------|------------|
| DESIGNED BY | RTP   | CHECKED BY                    | TJP        |
| DRAWN BY    | TJH   | APPROVED BY                   | DPK        |
| HOR. SCALE: | 1:250 | RELEASED FOR CONSTRUCTION BY: |            |
| VERTICAL:   |       | DATE                          | 2013/11/21 |



**THE CITY OF WINNIPEG PUBLIC WORKS DEPARTMENT**

PLESSIS ROAD TWINNING AND GRADE SEPARATION AT CN REDDITT SUBDIVISION CONTRACT 3

CITY DRAWING NUMBER U238-2014-2129  
SHEET 29 OF 66

PLAN-PROFILE - PLESSIS - STA. 2+155 TO 2+315 (PLAN) **CT-0029**

CONSULTANT DRAWING NO. 12-6576-CT-0029