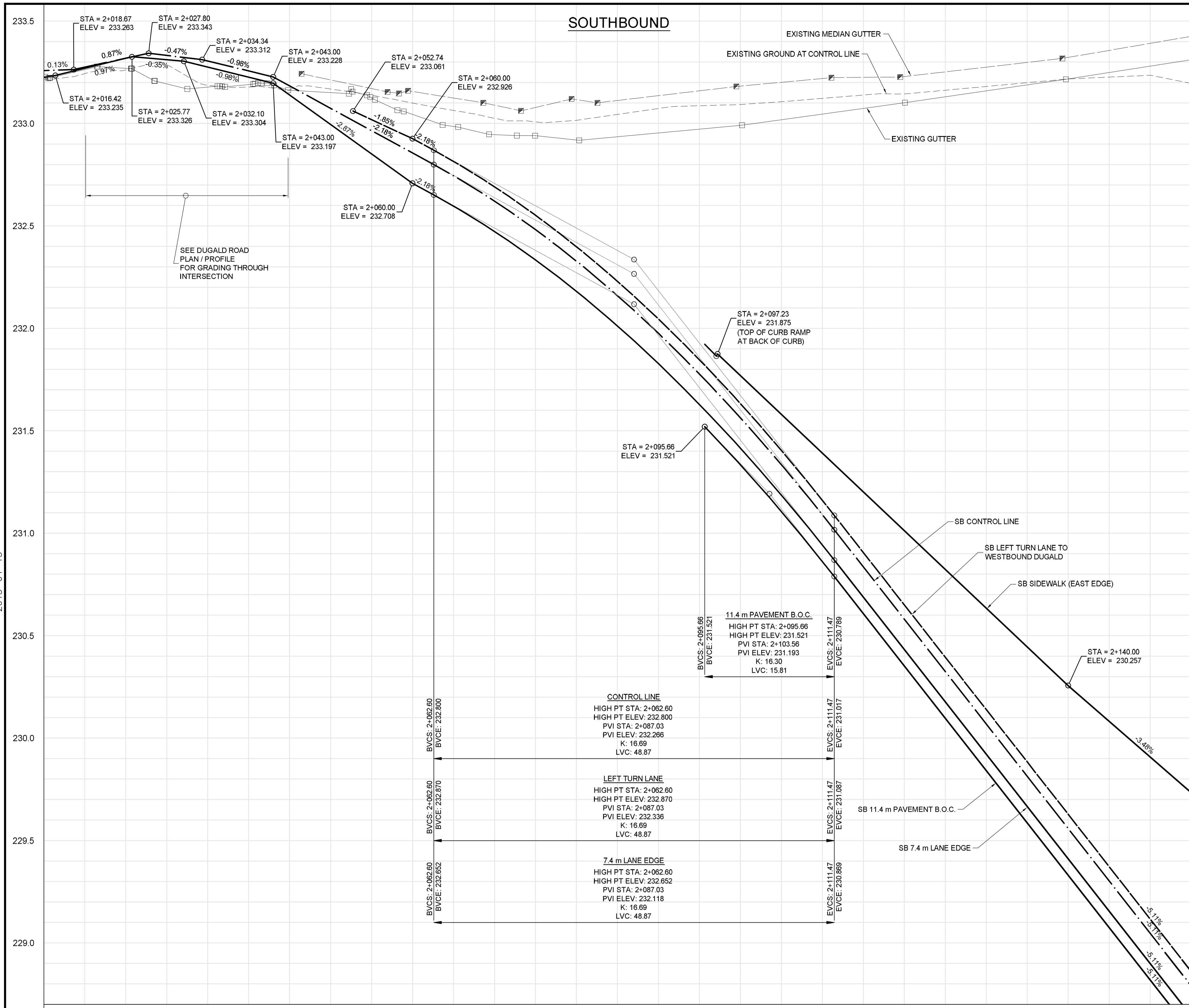


2013-04-15



CONSTRUCTION NOTES:

- CONTRACTOR SHALL TAKE PRECAUTIONARY STEPS TO AVOID DAMAGE FROM CONSTRUCTION ACTIVITIES TO EXISTING BOULEVARDS AND TREES WITHIN THE LIMITS OF CONSTRUCTION.
- LOCATION OF EXISTING SERVICES ARE TO BE CONFIRMED IN THE FIELD BY THE CONTRACTOR.
- TIE-INS TO BE VERIFIED IN THE FIELD BY THE CONTRACT ADMINISTRATOR.
- LIMITS OF SIDEWALK RENEWALS TO BE FINALIZED IN THE FIELD BY THE CONTRACT ADMINISTRATOR.
- FOR ADJUSTMENTS AND REMOVALS SEE SHEETS CT-0002 TO CT-0010.
- DITCH GRADING TO BE FINALIZED IN FIELD BY CONTRACT ADMINISTRATOR.
- INSTALL 18 m OF 150 mm SUB DRAIN TO CATCH BASINS IN BOTH DIRECTIONS PARALLEL TO ROADWAY AS PER SD-245 AND CAP ENDS.
- INSTALL 100 m OF 150 mm SUB DRAIN ON EITHER SIDE OF PLESSIS UNDERPASS LOW POINT. (LOWEST PAVEMENT EDGE ONLY)
- SEE CIVIL DRAWINGS FOR ALL CATCH BASIN AND CULVERT INFORMATION.
- INSTALL MODIFIED BARRIER CURB (SD-203B) ON ALL CONCRETE APPROACH RADII.
- EXCAVATION SLOPES ON EITHER SIDE OF THE RAIL SHOOFLY SHALL BE AS DIRECTED IN THE GEOTECHNICAL MEMO WITHIN THE BID OPPORTUNITY.
- NO VIBRATORY COMPACTION OVER OIL LINES.

METRIC
WHOLE NUMBERS INDICATE MILLIMETRES
DECIMALIZED NUMBERS INDICATE METRES

WARNING
IF POWER EQUIPMENT OR EXPLOSIVES ARE TO BE USED FOR EXCAVATION ON THIS PROJECT THE CONTRACTOR MUST:

- NOTIFY THE GAS COMPANY OF THE PROPOSED LOCATION OF EXCAVATION.
- TAKE PRECAUTION TO AVOID DAMAGE TO GAS COMPANY INSTALLATIONS SEE PROVINCIAL REGULATION 140/22 FOR DETAILS.
- OBTAIN EXCAVATION PERMITS PRIOR TO CONSTRUCTION.

APEGM
Certificate of Authorization
Dillon Consulting Limited (MB)
No. 1789 Date: 2013/11/21

BID OPPORTUNITY NO. 712-2013

150 WM	WATERMAIN	150 WM	HYDRO	HYDRO	150 WM	WATERMAIN	150 WM
HYDRANT	HYDRANT	MTS	M.T.S.	CONCRETE	HYDRANT	VALVE	VALVE
300 LDS	LAND DRAINAGE SEWER	300 LDS	ASPHALT	PLANING	300 LDS	LAND DRAINAGE SEWER	300 LDS
250 WWS	WASTE WATER SEWER	250 WWS	SIDEWALK	PAVING STONES	250 WWS	WASTE WATER SEWER	250 WWS
MANHOLE	MANHOLE	PROPERTY LINE	DRAINAGE SWALE	DRAINAGE ARROW	CURB RAMP	EXISTING	PROPOSED
CATCH BASIN	CATCH BASIN	DRAINAGE ARROW	CURB RAMP	EXISTING	PROPOSED	LEGEND-PLAN	PROPOSED
CURB INLET	CURB INLET	LEGEND-PLAN	PROPOSED	EXISTING	LEGEND-PROFILE	PROPOSED	PROPOSED
JUNCTIONS	JUNCTIONS	LEGEND-PROFILE	PROPOSED	EXISTING	LEGEND-PLAN	PROPOSED	PROPOSED
CULVERT	CULVERT	LEGEND-PLAN	PROPOSED	EXISTING	LEGEND-PROFILE	PROPOSED	PROPOSED
100 GAS	GAS	LEGEND-PROFILE	PROPOSED	EXISTING	LEGEND-PLAN	PROPOSED	PROPOSED
EXISTING	LEGEND-PLAN	PROPOSED	EXISTING	LEGEND-PROFILE	PROPOSED	LEGEND-PLAN	PROPOSED

LOCATION APPROVED UNDERGROUND STRUCTURES

SUPV. U/G STRUCTURES COMMITTEE DATE

NOTE:
LOCATION OF UNDERGROUND STRUCTURES AS SHOWN ARE BASED ON THE BEST INFORMATION AVAILABLE. BUT NO GUARANTEE IS GIVEN THAT ALL EXISTING UTILITIES ARE SHOWN OR THAT THE GIVEN LOCATIONS ARE EXACT. CONFIRMATION OF EXISTENCE AND EXACT LOCATION OF ALL SERVICES MUST BE OBTAINED FROM THE INDIVIDUAL UTILITIES BEFORE PROCEEDING WITH CONSTRUCTION.

B.M. ELEV.

0	ISSUED FOR TENDER	2013/11/21	TJP
NO.	REVISIONS	DATE	BY

DILLON CONSULTING

DESIGNED BY	RTP	CHECKED BY	TJP
DRAWN BY	TJH	APPROVED BY	DPK
HOR. SCALE:	1:250	RELEASED FOR CONSTRUCTION BY:	
VERTICAL:	1:10	DATE	2013/11/21

ENGINEER'S SEAL

PROVINCE OF MANITOBA
REGISTERED PROFESSIONAL ENGINEER
T.J. PETERS
2013/11/21
Member 22309

CONSULTANT DRAWING NO.
12-6576-CT-0027

THE CITY OF WINNIPEG PUBLIC WORKS DEPARTMENT

PLESSIS ROAD TWINNING AND GRADE SEPARATION AT CN REDDITT SUBDIVISION CONTRACT 3

CITY DRAWING NUMBER
U238-2014-2127
SHEET 27 OF 66

PLAN-PROFILE - PLESSIS - STA. 2+005 TO 2+155 (PROFILE-SB)

CT-0027