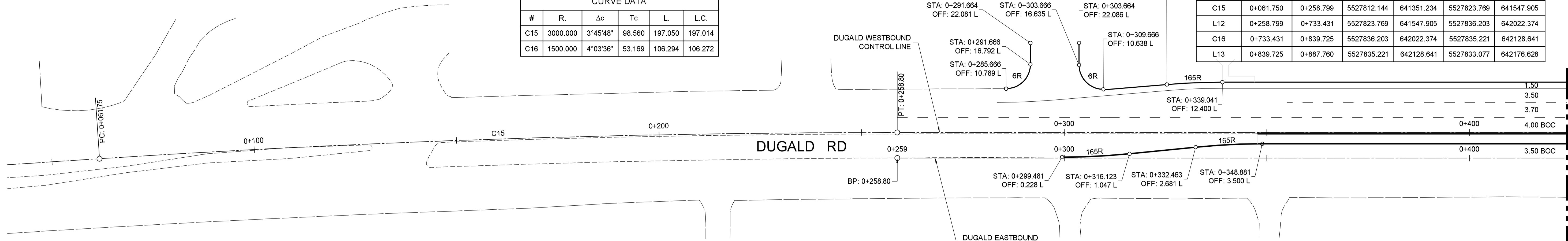




CURVE DATA					
#	R.	Δc	Tc	L.	L.C.
C15	3000.000	3°45'48"	98.560	197.050	197.014
C16	1500.000	4°03'36"	53.169	106.294	106.272

DUGALD WESTBOUND						
SEGMENT	STATION (START)	STATION (END)	NORTHING (START)	EASTING (START)	NORTHING (END)	EASTING (END)
L11	0+000.000	0+061.750	5527806.478	641289.745	5527812.144	641351.234
C15	0+061.750	0+258.799	5527812.144	641351.234	5527823.769	641547.905
L12	0+258.799	0+733.431	5527823.769	641547.905	5527836.203	642022.374
C16	0+733.431	0+839.725	5527836.203	642022.374	5527835.221	642128.641
L13	0+839.725	0+887.760	5527835.221	642128.641	5527833.077	642176.628



DUGALD EASTBOUND						
SEGMENT	STATION (START)	STATION (END)	NORTHING (START)	EASTING (START)	NORTHING (END)	EASTING (END)
L17	0+258.800	0+733.432	5527817.471	641548.070	5527829.905	642022.539

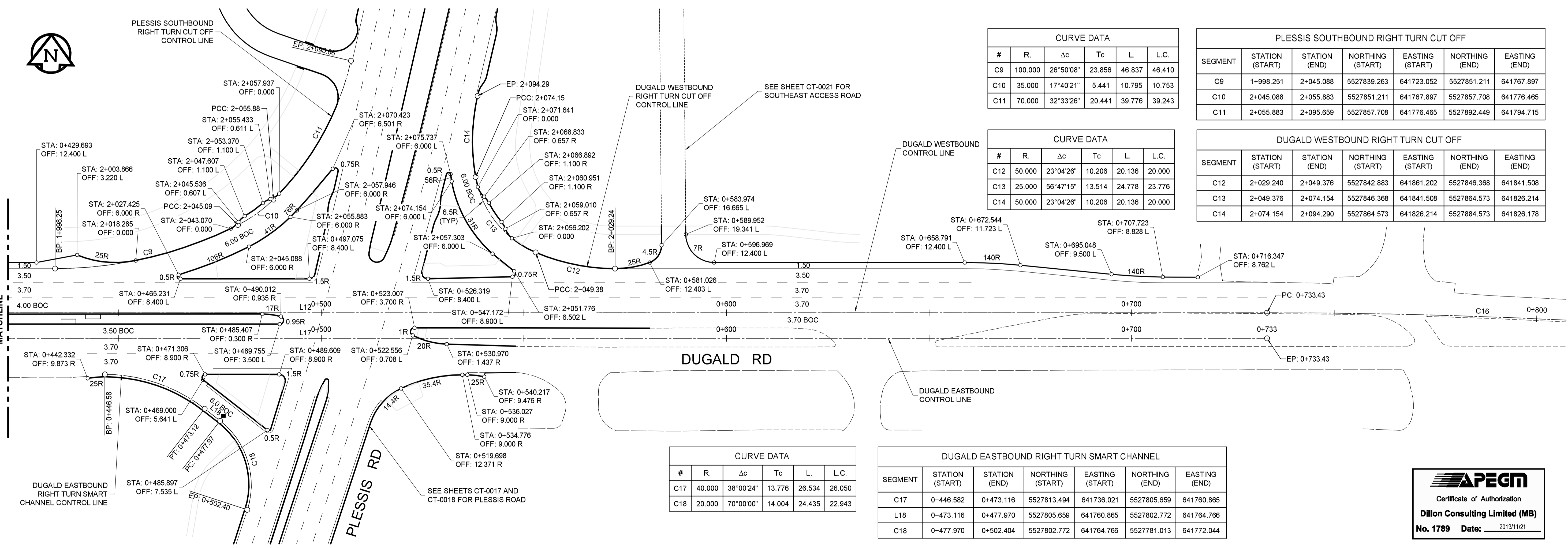


CURVE DATA					
#	R.	Δc	Tc	L.	L.C.
C9	100.000	26°50'08"	23.856	46.837	46.410
C10	35.000	17°40'21"	5.441	10.795	10.753
C11	70.000	32°33'26"	20.441	39.776	39.243

PLESSIS SOUTHBOUND RIGHT TURN CUT OFF						
SEGMENT	STATION (START)	STATION (END)	NORTHING (START)	EASTING (START)	NORTHING (END)	EASTING (END)
C9	1+998.251	2+045.088	5527839.263	641723.052	5527851.211	641767.897
C10	2+045.088	2+055.883	5527851.211	641767.897	5527857.708	641776.465
C11	2+055.883	2+095.659	5527857.708	641776.465	5527892.449	641794.715

CURVE DATA					
#	R.	Δc	Tc	L.	L.C.
C12	50.000	23°04'26"	10.206	20.136	20.000
C13	25.000	56°47'15"	13.514	24.778	23.776
C14	50.000	23°04'26"	10.206	20.136	20.000

DUGALD WESTBOUND RIGHT TURN CUT OFF						
SEGMENT	STATION (START)	STATION (END)	NORTHING (START)	EASTING (START)	NORTHING (END)	EASTING (END)
C12	2+029.240	2+049.376	5527842.883	641861.202	5527846.368	641841.508
C13	2+049.376	2+074.154	5527846.368	641841.508	5527864.573	641826.214
C14	2+074.154	2+094.290	5527864.573	641826.214	5527884.573	641826.178



CURVE DATA					
#	R.	Δc	Tc	L.	L.C.
C17	40.000	38°00'24"	13.776	26.534	26.050
C18	20.000	70°00'00"	14.004	24.435	22.943

DUGALD EASTBOUND RIGHT TURN SMART CHANNEL						
SEGMENT	STATION (START)	STATION (END)	NORTHING (START)	EASTING (START)	NORTHING (END)	EASTING (END)
C17	0+446.582	0+473.116	5527813.494	641736.021	5527805.659	641760.865
L18	0+473.116	0+477.970	5527805.659	641760.865	5527802.772	641764.766
C18	0+477.970	0+502.404	5527802.772	641764.766	5527781.013	641772.044



BID OPPORTUNITY NO. 712-2013

150 WM	150 WM	HYDRO	HYDRO	150 WM	WATERMAIN	150 WM
HYDRANT	HYDRANT	MTS	MTS	HYDRANT	HYDRANT	HYDRANT
VALVE	VALVE			VALVE	VALVE	VALVE
LAND DRAINAGE SEWER	LAND DRAINAGE SEWER			LAND DRAINAGE SEWER	LAND DRAINAGE SEWER	LAND DRAINAGE SEWER
WASTE WATER SEWER	WASTE WATER SEWER			WASTE WATER SEWER	WASTE WATER SEWER	WASTE WATER SEWER
MANHOLE	MANHOLE			MANHOLE	MANHOLE	MANHOLE
CATCH BASIN	CATCH BASIN			CATCH BASIN	CATCH BASIN	CATCH BASIN
CURB INLET	CURB INLET			CURB INLET	CURB INLET	CURB INLET
JUNCTIONS	JUNCTIONS			JUNCTIONS	JUNCTIONS	JUNCTIONS
CULVERT	CULVERT			CULVERT	CULVERT	CULVERT
100 GAS	100 GAS			100 GAS	100 GAS	100 GAS
EXISTING	LEGEND-PLAN	PROPOSED	EXISTING	LEGEND-PLAN	PROPOSED	EXISTING

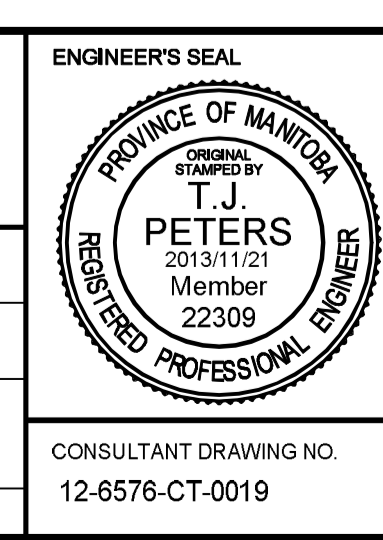
LOCATION APPROVED UNDERGROUND STRUCTURES

SUPV. U/G STRUCTURES COMMITTEE DATE

NOTE: LOCATION OF UNDERGROUND STRUCTURES AS SHOWN ARE BASED ON THE BEST INFORMATION AVAILABLE, BUT NO GUARANTEE IS GIVEN THAT THE GIVEN LOCATIONS ARE EXACT. CONFIRMATION OF EXISTENCE AND EXACT LOCATION OF ALL SERVICES MUST BE OBTAINED FROM THE INDIVIDUAL UTILITIES BEFORE PROCEEDING WITH CONSTRUCTION.

B.M. ELEV.	NO.	ISSUED FOR TENDER	DATE	BY
	0	ISSUED FOR TENDER	2013/11/21	TJP

DESIGNED BY	CHECKED BY
RTP	TJP
DRAWN BY	APPROVED BY
TJH	DPK
HOR. SCALE:	RELEASED FOR CONSTRUCTION BY:
1:500	
VERTICAL:	DATE
	2013/11/21



THE CITY OF WINNIPEG PUBLIC WORKS DEPARTMENT

PLESSIS ROAD TWINNING AND GRADE SEPARATION AT CN REDDITT SUBDIVISION CONTRACT 3

CITY DRAWING NUMBER U238-2014-2119 SHEET 19 OF 66

CONTROL LINE GEOMETRY - DUGALD **CT-0019**

CONSULTANT DRAWING NO. 12-6576-CT-0019

2013-04-30