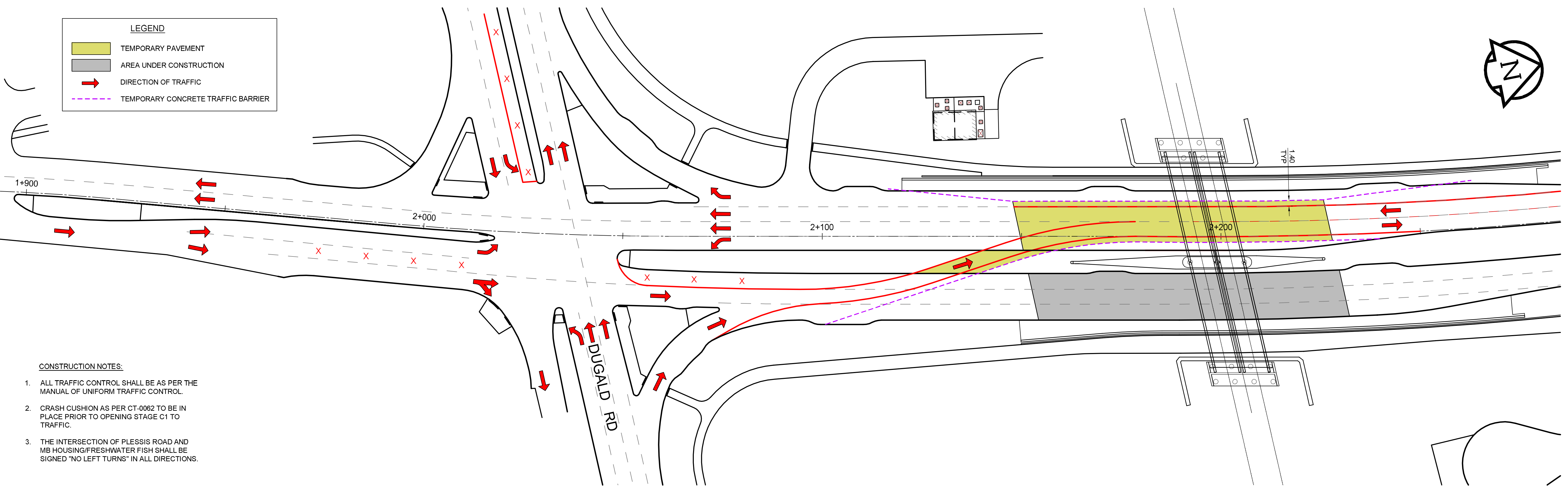
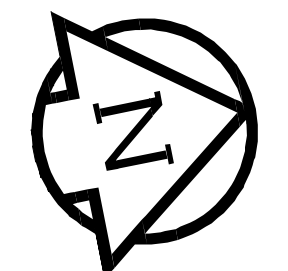


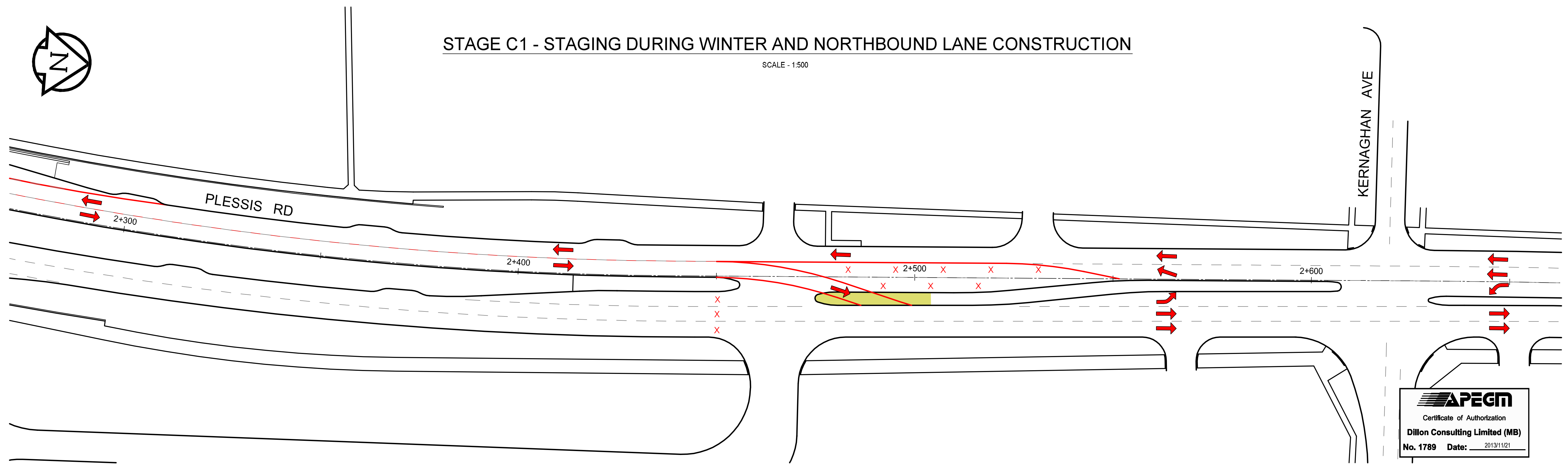
LEGEND	
	TEMPORARY PAVEMENT
	AREA UNDER CONSTRUCTION
	DIRECTION OF TRAFFIC
	TEMPORARY CONCRETE TRAFFIC BARRIER



- CONSTRUCTION NOTES:**
1. ALL TRAFFIC CONTROL SHALL BE AS PER THE MANUAL OF UNIFORM TRAFFIC CONTROL.
  2. CRASH CUSHION AS PER CT-0062 TO BE IN PLACE PRIOR TO OPENING STAGE C1 TO TRAFFIC.
  3. THE INTERSECTION OF PLESSIS ROAD AND MB HOUSING/FRESHWATER FISH SHALL BE SIGNED "NO LEFT TURNS" IN ALL DIRECTIONS.

**STAGE C1 - STAGING DURING WINTER AND NORTHBOUND LANE CONSTRUCTION**

SCALE - 1:500



**APEGM**  
 Certificate of Authorization  
**Dillon Consulting Limited (MB)**  
 No. 1789 Date: 2013/11/21

BID OPPORTUNITY NO. 712-2013

150 WM	WATERMAIN	150 WM	HYDRO	HYDRO	HYDRO	150 WM	WATERMAIN	150 WM	LOCATION APPROVED UNDERGROUND STRUCTURES	B.M. ELEV.				<b>THE CITY OF WINNIPEG</b> <b>PUBLIC WORKS DEPARTMENT</b>	PLESSIS ROAD TWINNING AND GRADE SEPARATION AT CN REDDITT SUBDIVISION CONTRACT 3	CITY DRAWING NUMBER U238-2014-2115 SHEET 15 OF 66
300 LDS	LAND DRAINAGE SEWER	300 LDS	HYDRO	HYDRO	300 LDS	LAND DRAINAGE SEWER	300 LDS	SUPV. U/G STRUCTURES COMMITTEE DATE NOTE: LOCATION OF UNDERGROUND STRUCTURES AS SHOWN ARE BASED ON THE BEST INFORMATION AVAILABLE, BUT NO GUARANTEE IS GIVEN THAT ALL EXISTING UTILITIES ARE SHOWN OR THAT THE GIVEN LOCATIONS ARE EXACT. CONFIRMATION OF EXISTENCE AND EXACT LOCATION OF ALL SERVICES MUST BE OBTAINED FROM THE INDIVIDUAL UTILITIES BEFORE PROCEEDING WITH CONSTRUCTION.								
250 WWS	WASTE WATER SEWER	250 WWS	HYDRO	HYDRO	250 WWS	WASTE WATER SEWER	250 WWS	0 ISSUED FOR TENDER 2013/11/21 TJP NO. REVISIONS DATE BY	DATE 2013/11/21	DATE 2013/11/21	DATE 2013/11/21	DATE 2013/11/21	DATE 2013/11/21	DATE 2013/11/21	DATE 2013/11/21	

2013-10-15