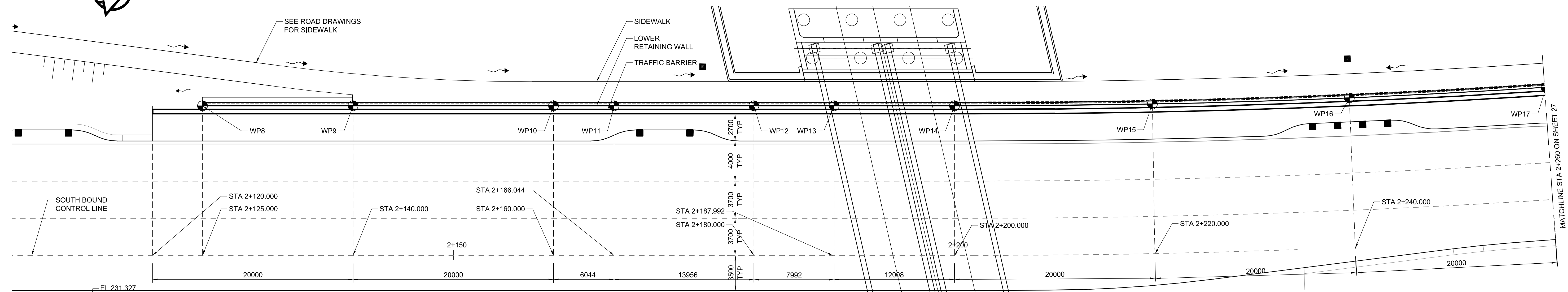
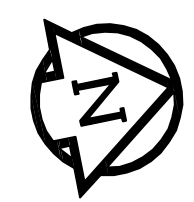
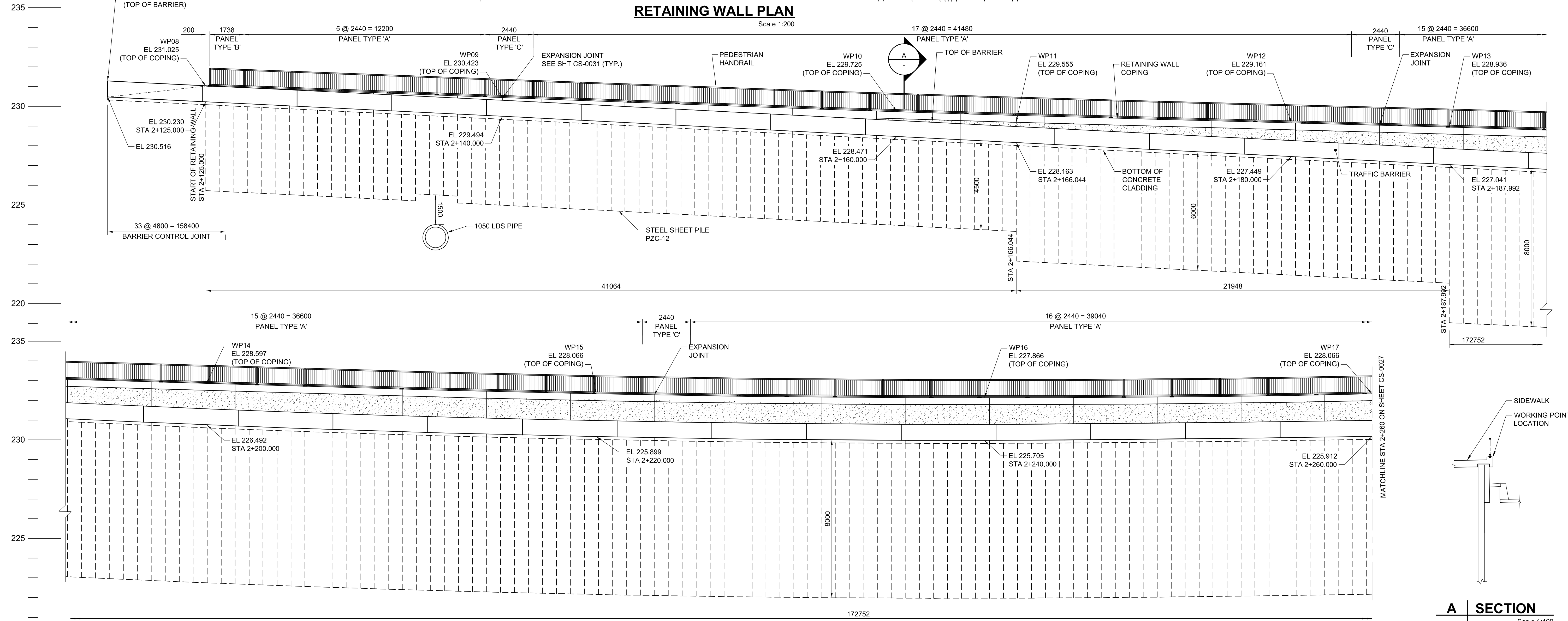


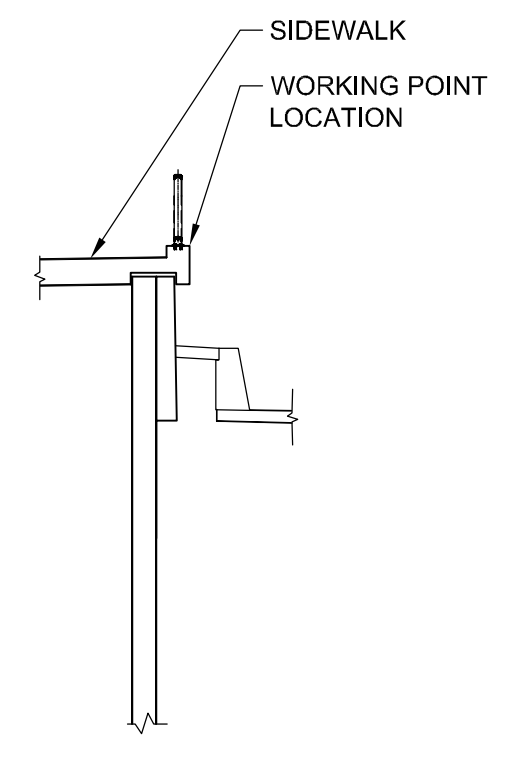
AL - 841694
6033-11-21
AECOM\COMMON_DEFAULTS\CTB
P:\60273041\000-CADD\02-SHEETS\CS\60273041-01-CS-504.DWG



RETAINING WALL PLAN
Scale 1:200



RETAINING WALL ELEVATION
Scale 1:100



A SECTION
Scale 1:100

WORKING POINT COORDINATES		
C.S.R.S. (NAD83) U.T.M. GRID		
WP	NORTHING	EASTING
WP8	5527921.882	641797.097
WP9	5527936.604	641800.075
WP10	5527956.204	641804.039
WP11	5527962.131	641805.238
WP12	5527975.807	641808.004
WP13	5527983.643	641809.589
WP14	5527995.413	641811.969
WP15	5528014.805	641815.710
WP16	5528034.185	641819.006
WP17	5528053.630	641821.870



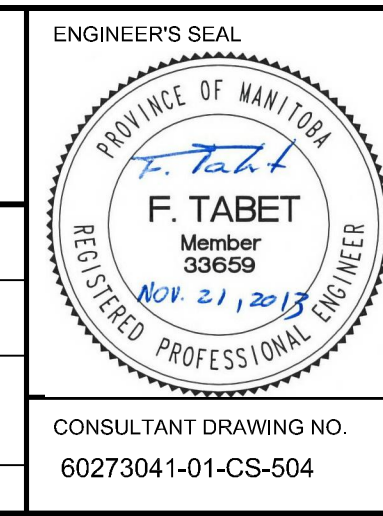
LOCATION APPROVED UNDERGROUND STRUCTURES

SUPV. U/G STRUCTURES COMMITTEE DATE

NOTE:
LOCATION OF UNDERGROUND STRUCTURES AS SHOWN ARE BASED ON THE BEST INFORMATION AVAILABLE, BUT NO GUARANTEE IS GIVEN THAT ALL EXISTING UTILITIES ARE SHOWN OR THAT THE GIVEN LOCATIONS ARE EXACT. CONFIRMATION OF EXISTENCE AND EXACT LOCATION OF ALL SERVICES MUST BE OBTAINED FROM THE INDIVIDUAL UTILITIES BEFORE PROCEEDING WITH CONSTRUCTION.

B.M. ELEV.	NO.	ISSUED FOR TENDER	DATE	BY
	0	ISSUED FOR TENDER	2013/11/21	KC
		REVISIONS		

AECOM		ENGINEER'S SEAL	
DESIGNED BY	FT	CHECKED BY	ZS
DRAWN BY	KC	APPROVED BY	EBL
HOR. SCALE:	AS NOTED	RELEASED FOR CONSTRUCTION BY:	
VERTICAL:	AS NOTED		
DATE	2013-06-04	DATE	



THE CITY OF WINNIPEG PUBLIC WORKS DEPARTMENT

PLESSIS ROAD TWINNING AND GRADE SEPARATION AT CN REDDITT SUBDIVISION CONTRACT 3

CITY DRAWING NUMBER U238-2014-2026
SHEET 26 OF 37

LOWER WEST RETAINING WALL - SHEET 1

CS-0026

BID OPPORTUNITY NO. 712-2013

CONSULTANT DRAWING NO. 60273041-01-CS-504