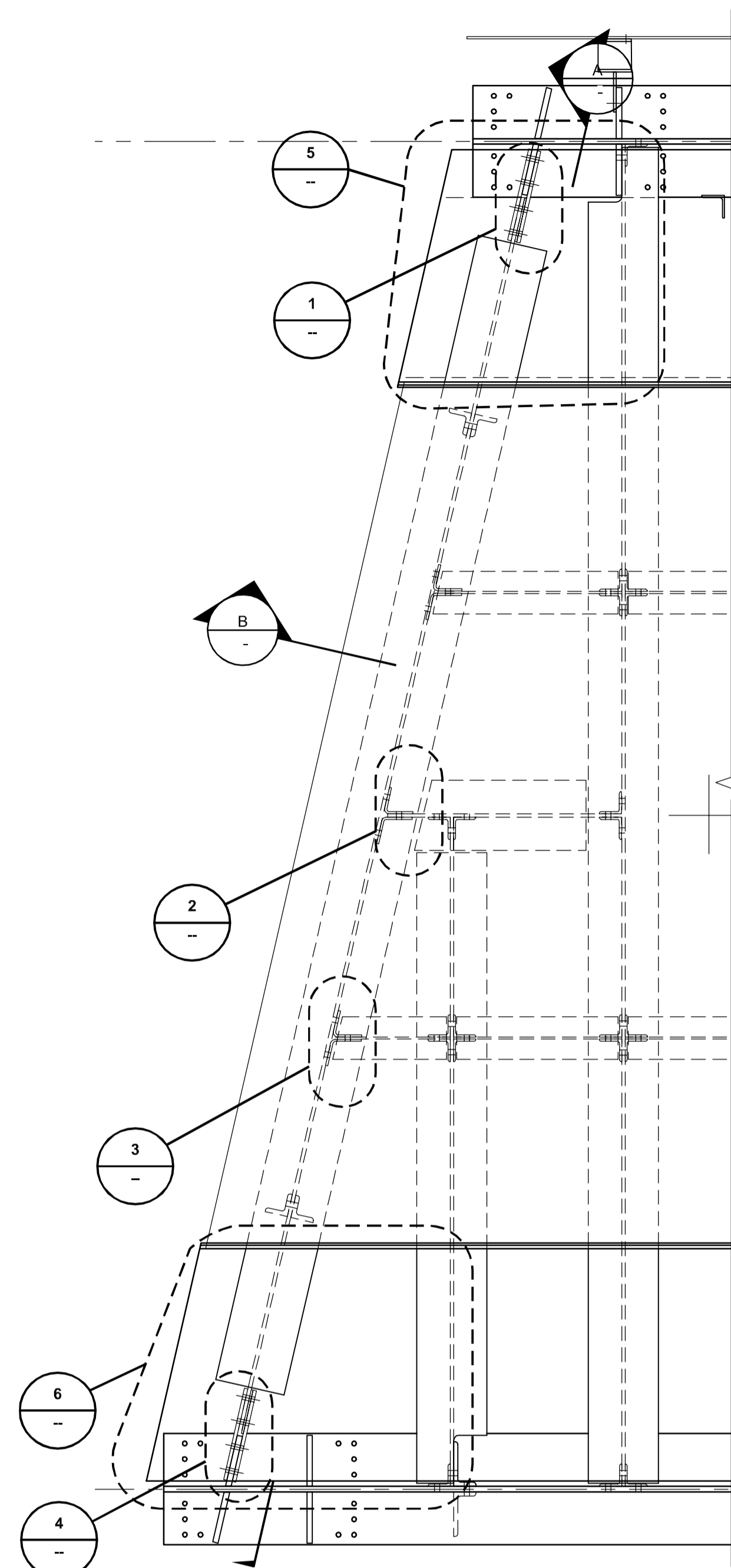
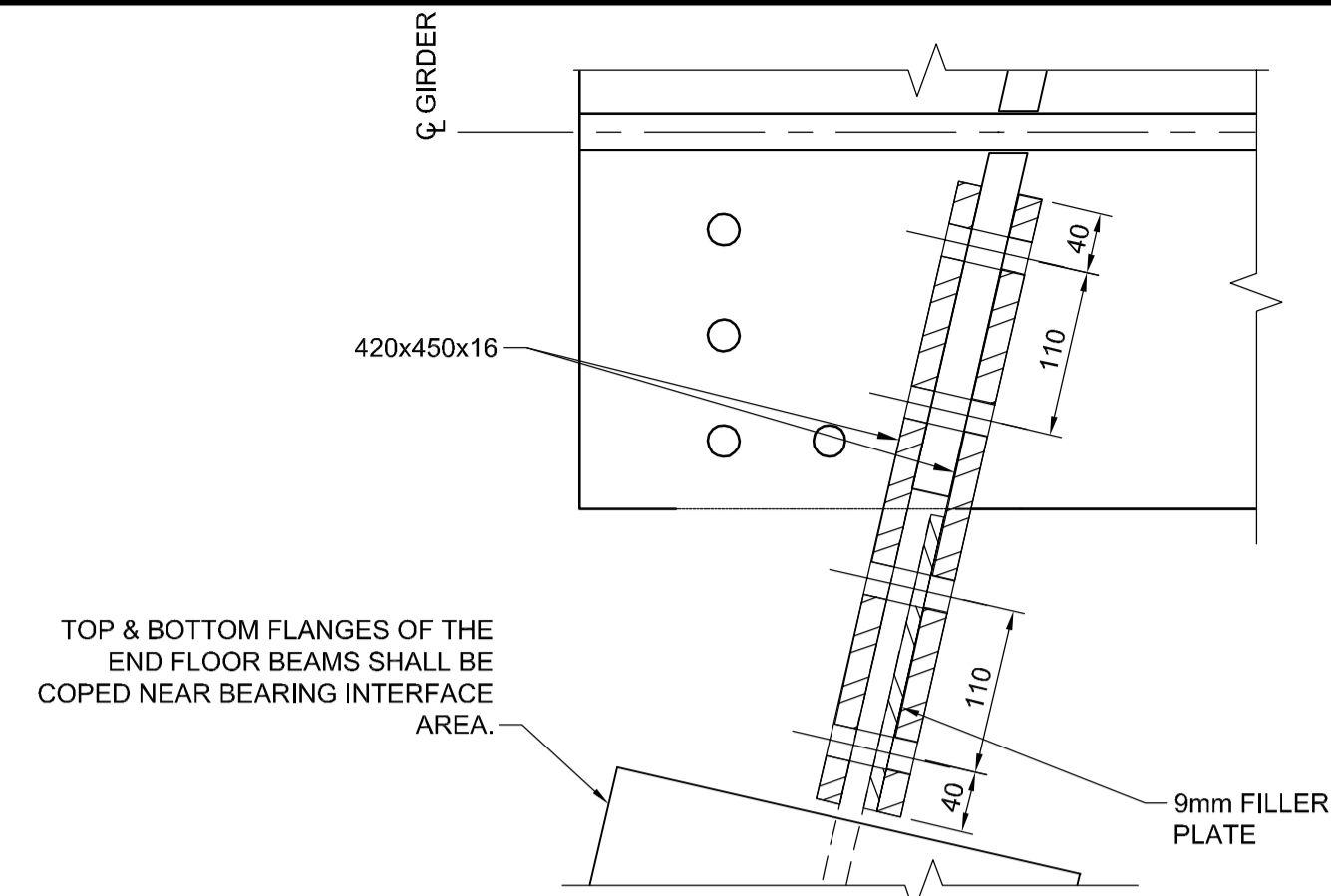


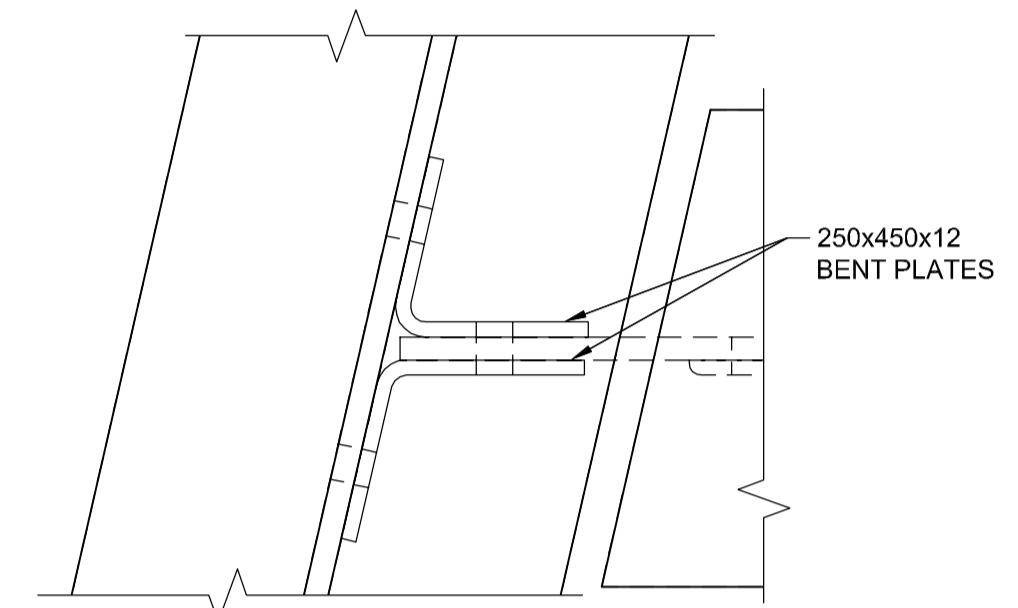
AL - 8416594
6033-11-21
AECOMM02_DEFAULT.CTP
P:\60273041\000-CADD\02-SHEETS\CS\60273041-01-CS-202.DWG



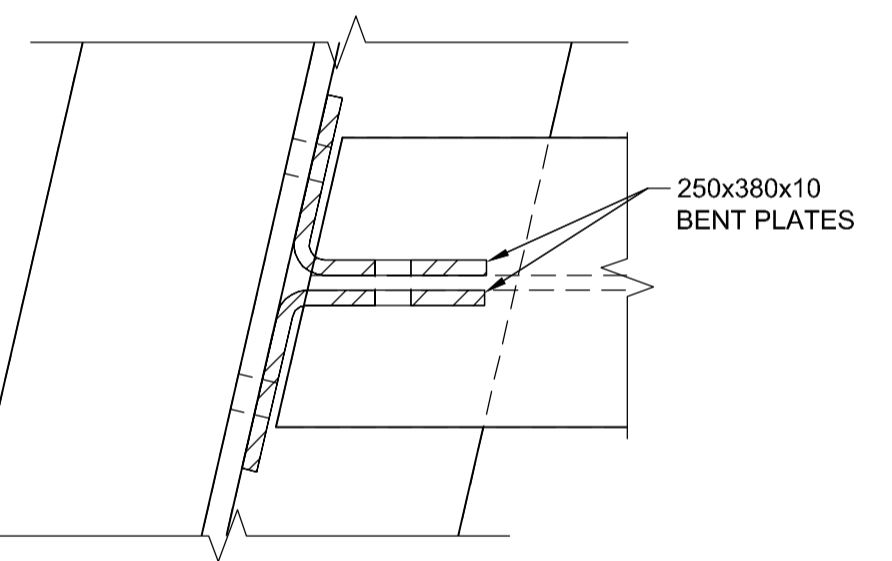
1 FLOOR BEAMS END PLAN
CS-0016 Scale 1:20



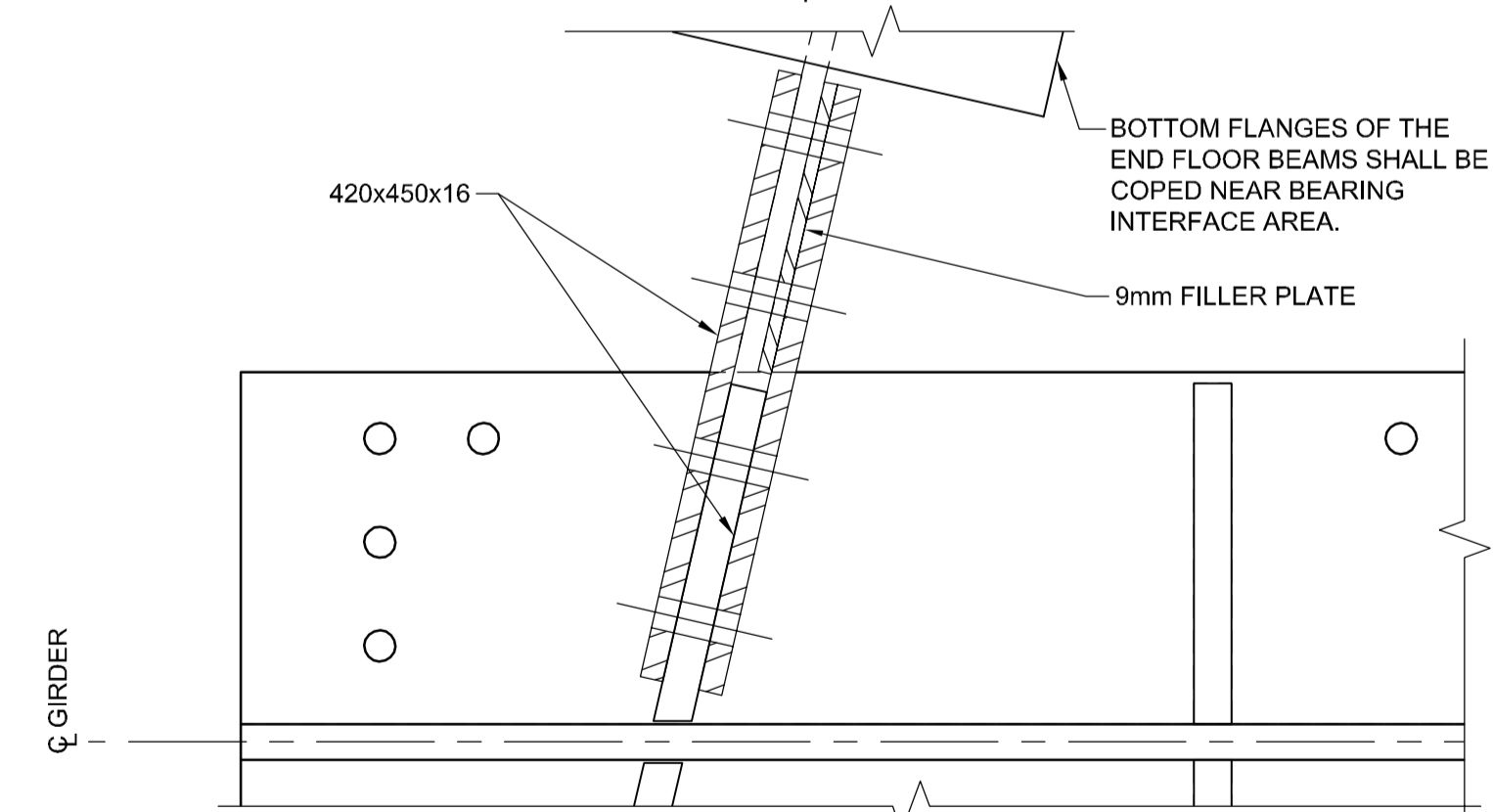
1 DETAIL
Scale 1:5



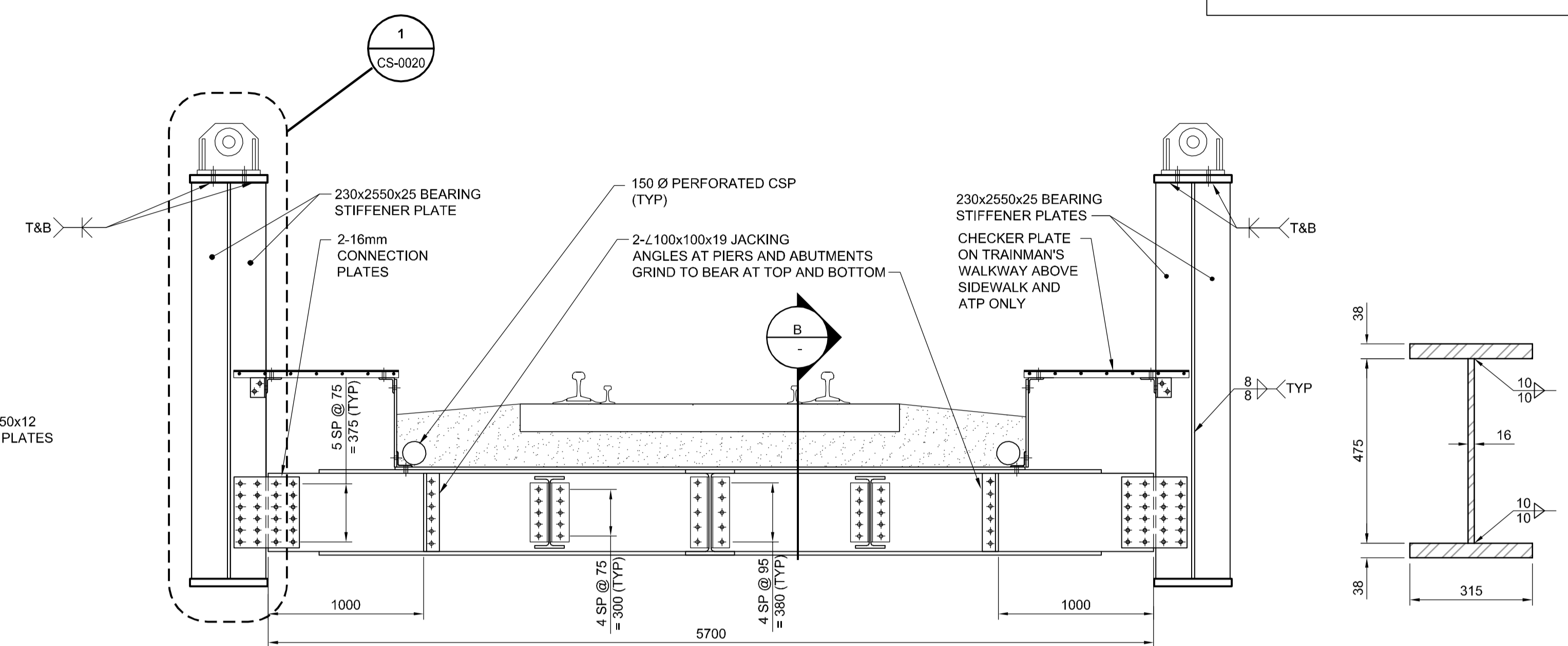
2 DETAIL
Scale 1:5



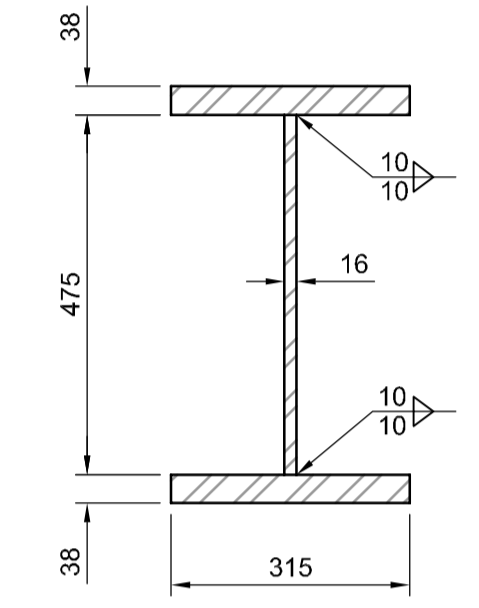
3 DETAIL
Scale 1:5



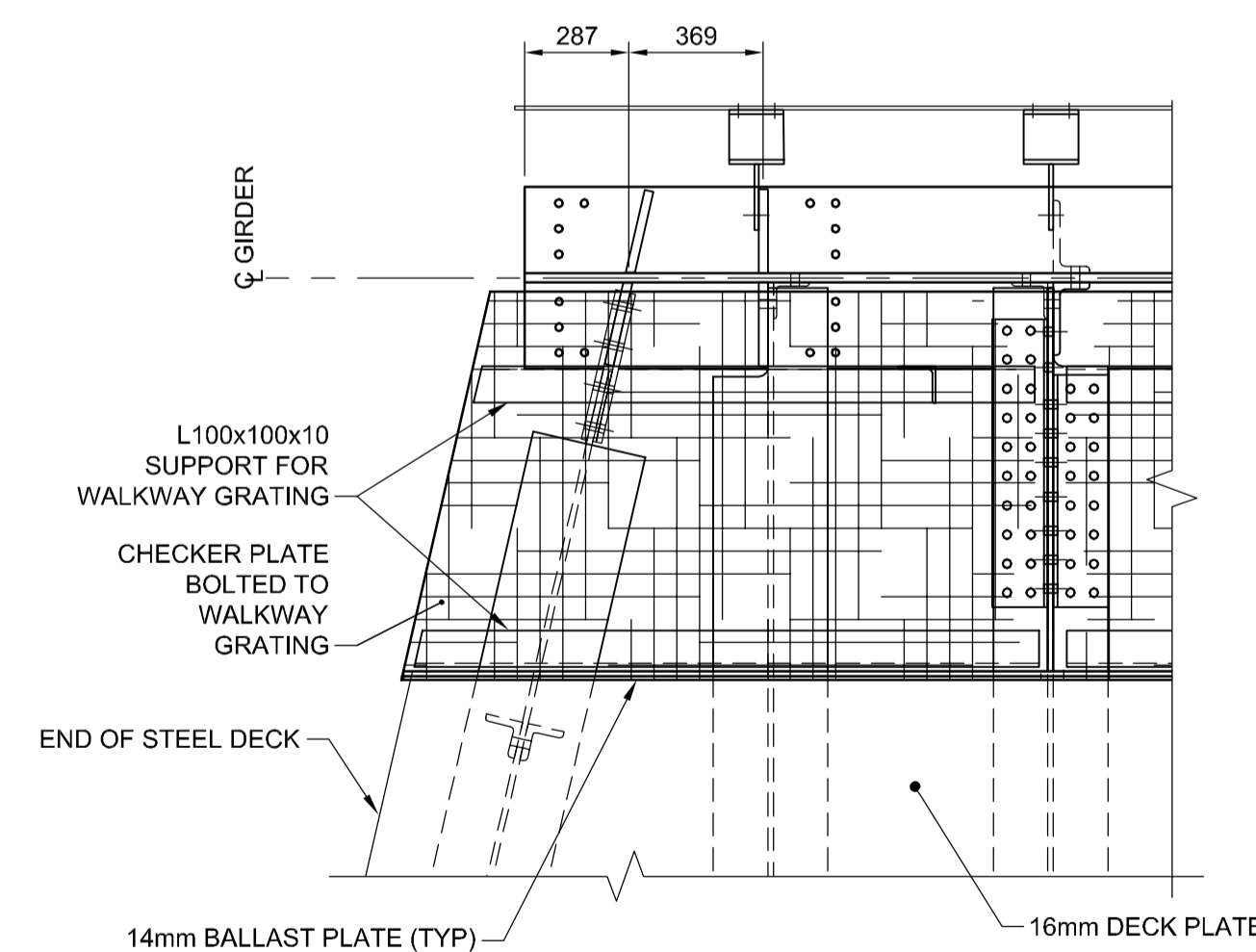
4 DETAIL
Scale 1:5



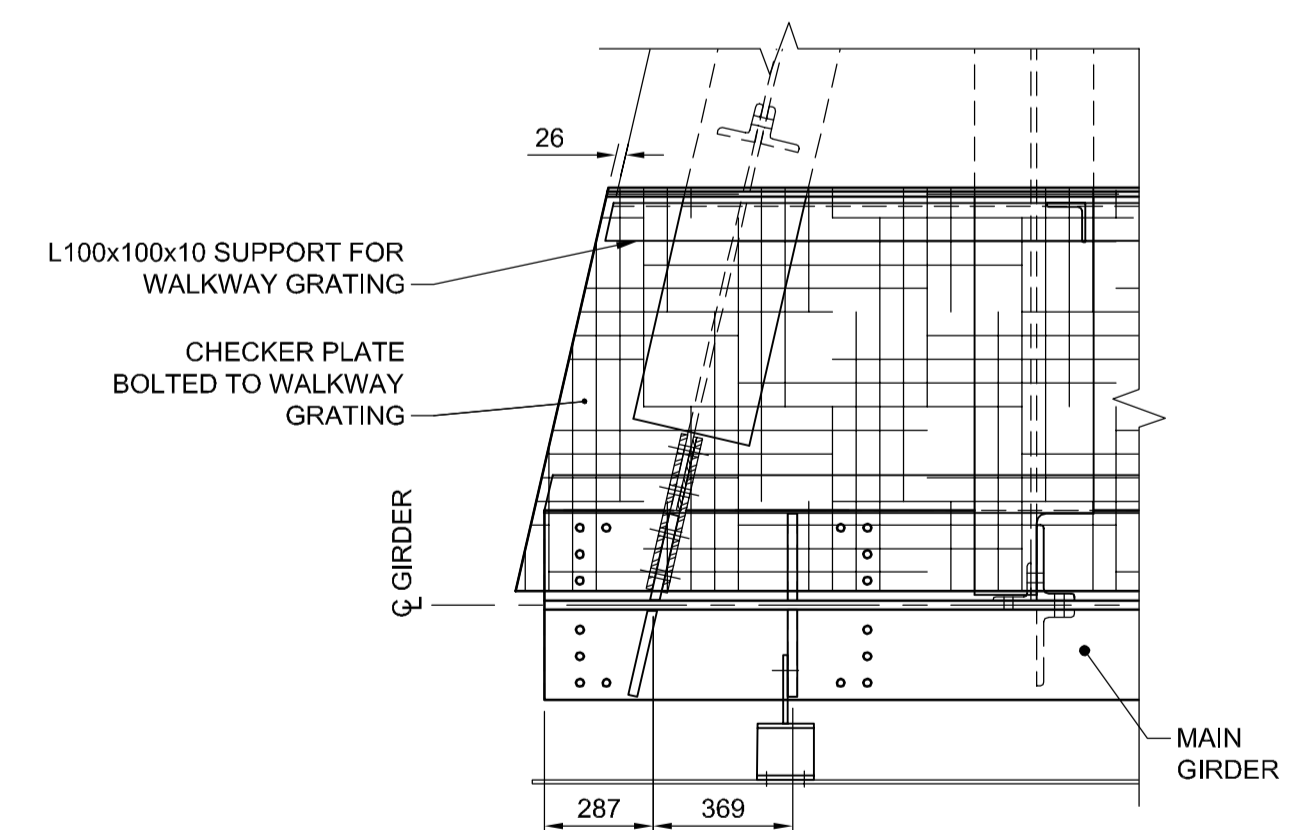
A SECTION
Scale 1:25



B SECTION
Scale 1:10



5 DETAIL
Scale 1:20



6 DETAIL
Scale 1:20

END FLOOR BEAMS SPAN LENGTH = 5.7m	
TOTAL BOTTOM FLANGE STRESS	= 109 MPa
PERMISS. STRESS	= 189 MPa
RATIO WORKING / PERMISS.	= 58%
$\frac{\Delta LL + I}{SPAN}$	= $\frac{1}{764}$
MAX. STRESS RANGE / PERMISS. FATIGUE STRESS	= 65%



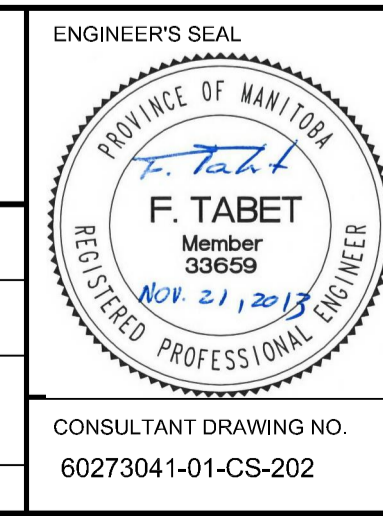
LOCATION APPROVED UNDERGROUND STRUCTURES

SUPV. U/G STRUCTURES COMMITTEE DATE

NOTE:
LOCATION OF UNDERGROUND STRUCTURES AS SHOWN ARE BASED ON THE BEST INFORMATION AVAILABLE, BUT NO GUARANTEE IS GIVEN THAT ALL EXISTING UTILITIES ARE SHOWN OR THAT THE GIVEN LOCATIONS ARE EXACT. CONFIRMATION OF EXISTENCE AND EXACT LOCATION OF ALL SERVICES MUST BE OBTAINED FROM THE INDIVIDUAL UTILITIES BEFORE PROCEEDING WITH CONSTRUCTION.

B.M. ELEV.	NO.	REVISIONS	DATE	BY
	0	ISSUED FOR TENDER	2013/11/21	KC

AECOM			
DESIGNED BY	FT	CHECKED BY	CD
DRAWN BY	MSK	APPROVED BY	EBL
HOR. SCALE:	AS NOTED	RELEASED FOR CONSTRUCTION BY:	
VERTICAL:	AS NOTED		
DATE	2013-06-04	DATE	



**THE CITY OF WINNIPEG
PUBLIC WORKS DEPARTMENT**

PLESSIS ROAD TWINNING AND GRADE SEPARATION AT CN REDDITT SUBDIVISION
CONTRACT 3

CITY DRAWING NUMBER
U238-2014-2017
SHEET 17 OF 37

END FLOOR BEAMS

CS-0017

BID OPPORTUNITY NO. 712-2013